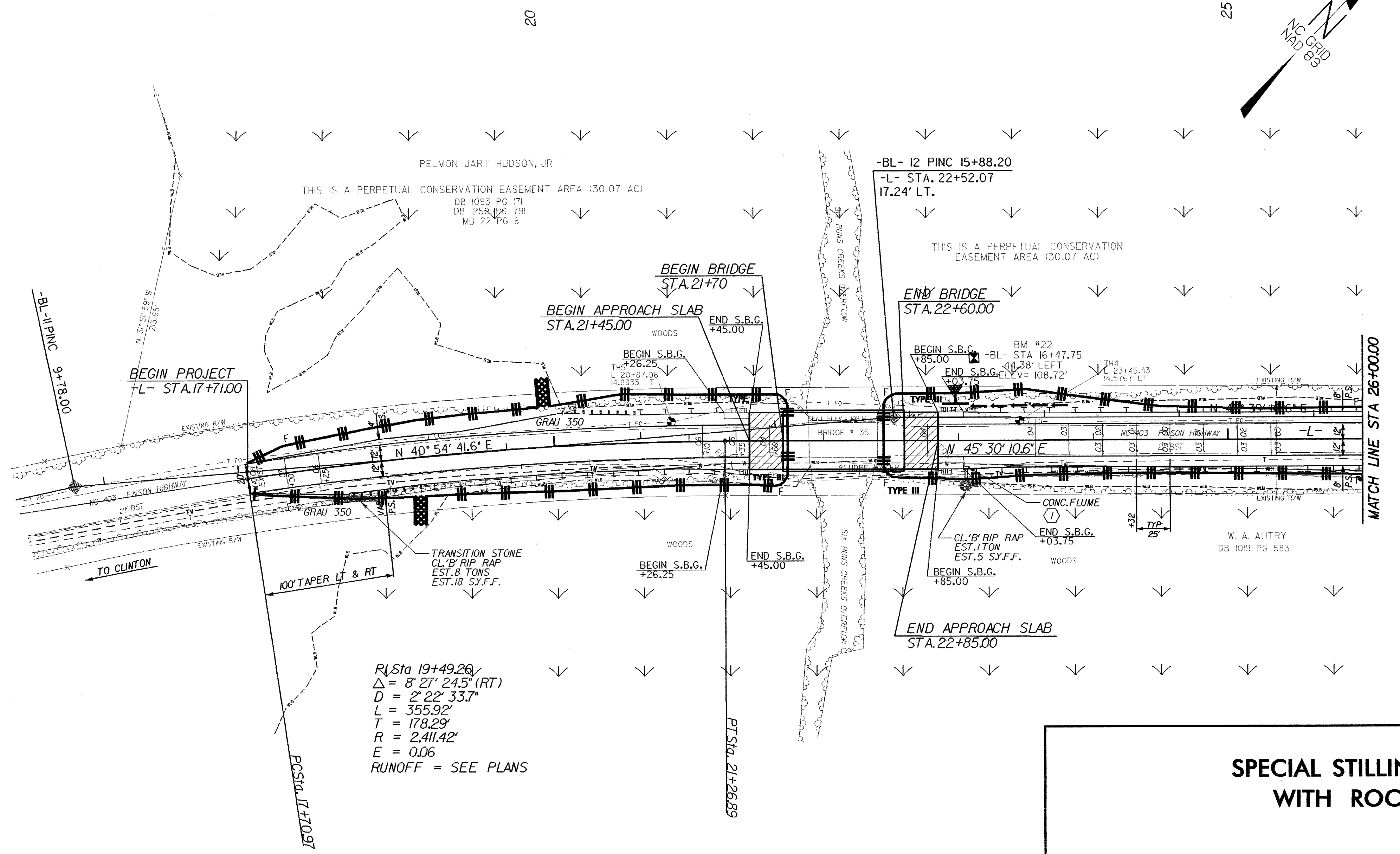


PROJECT REFERENCE NO.	SHEET NO.
B-3906	EC-3/CONST.4
RW SHEET NO.	
ROADWAY DESIGN ENGINEER	HYDRAULICS ENGINEER

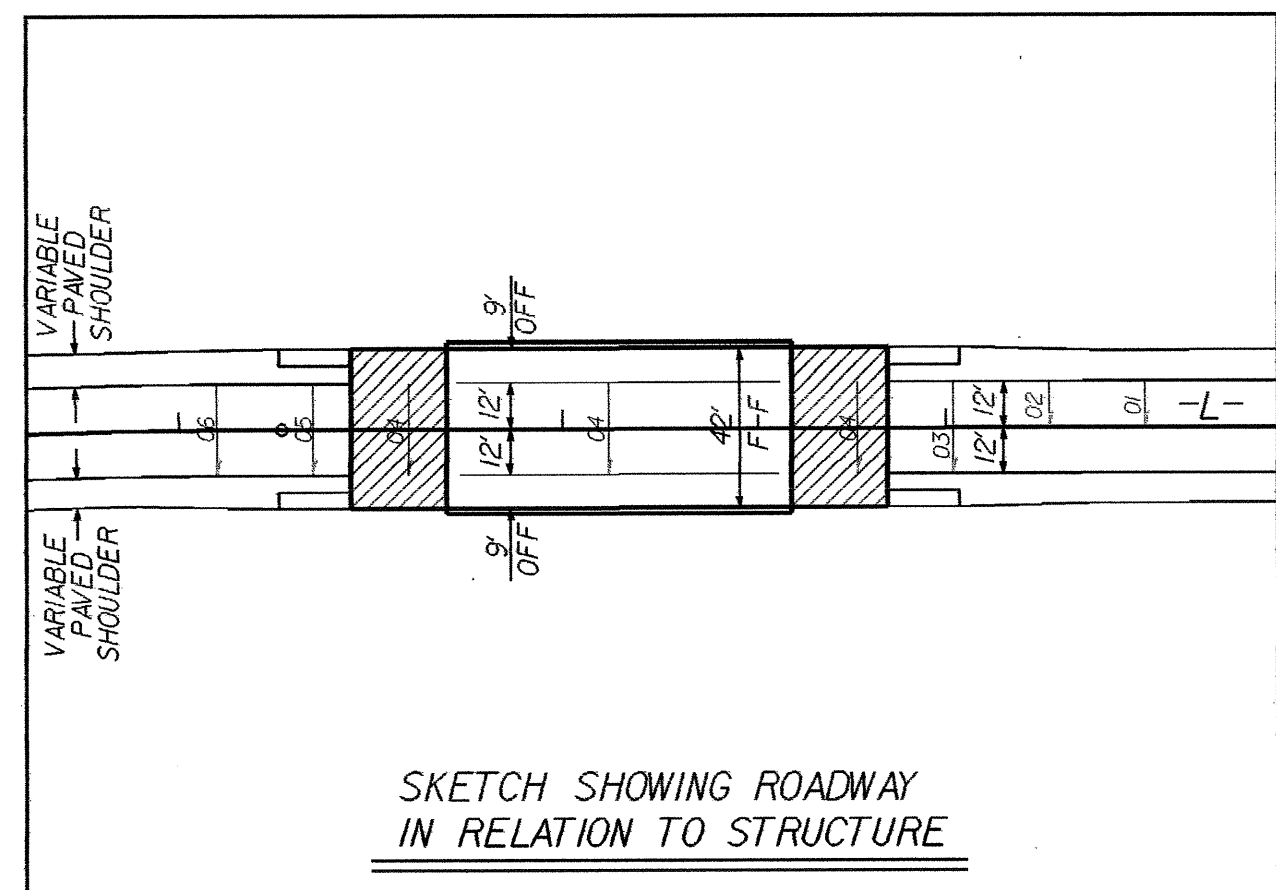
NOTE: UTILIZE SPECIAL STILLING BASIN AS STILLING BASIN WHERE APPLICABLE.

NOTE: PERIMETER EROSION CONTROL MEASURES SHALL BE INSTALLED DURING CLEARING AND GRUBBING PHASE.

NOTE: TEMPORARY SILT FENCE SHALL BE INSTALLED A MINIMUM OF 3 FEET FROM TOE OF FILL IN WETLAND AREAS



R/Sta 19+49.26
 $\Delta = 8' 27' 24.5\"$ (RT)
 $D = 2' 22' 33.7\"$
 $L = 355.92'$
 $T = 178.29'$
 $R = 2,411.42'$
 $E = 0.06$
 RUNOFF = SEE PLANS



DATUM DESCRIPTION
 THE LOCALIZED COORDINATE SYSTEM DEVELOPED FOR THIS PROJECT IS BASED ON THE STATE PLANE COORDINATES ESTABLISHED BY NCDDOT FOR MONUMENT "B3906-3" WITH NAD 1983/95 STATE PLANE GRID COORDINATES OF NORTHING: 486,359,231(11) EASTING: 2,225,620,707(11) THE AVERAGE COMBINED GRID FACTOR USED ON THIS PROJECT (GROUND TO GRID) IS: 0.999876870 THE N.C. LAMBERT GRID BEARING AND LOCALIZED HORIZONTAL GROUND DISTANCE FROM "B3906-3" TO -L- STATION 17+71.00 IS N 37° 10' 03" E 117.402' ALL LINEAR DIMENSIONS ARE LOCALIZED HORIZONTAL DISTANCES VERTICAL DATUM USED IS NAVD 88

 DENOTES APPROACH SLAB

