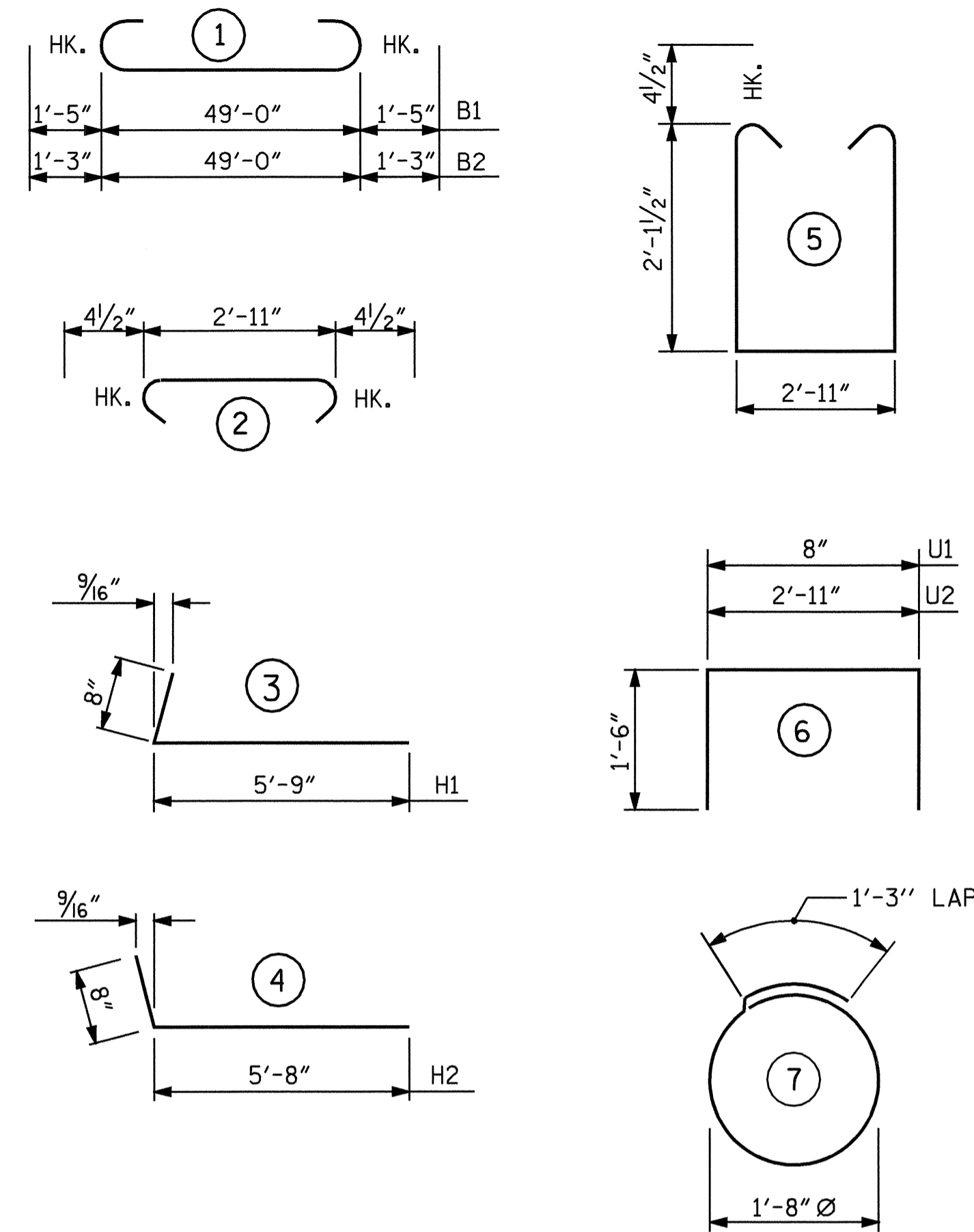


SECTION A-A

BAR TYPES

BAR DIMENSIONS ARE OUT TO OUT.



BILL OF MATERIAL

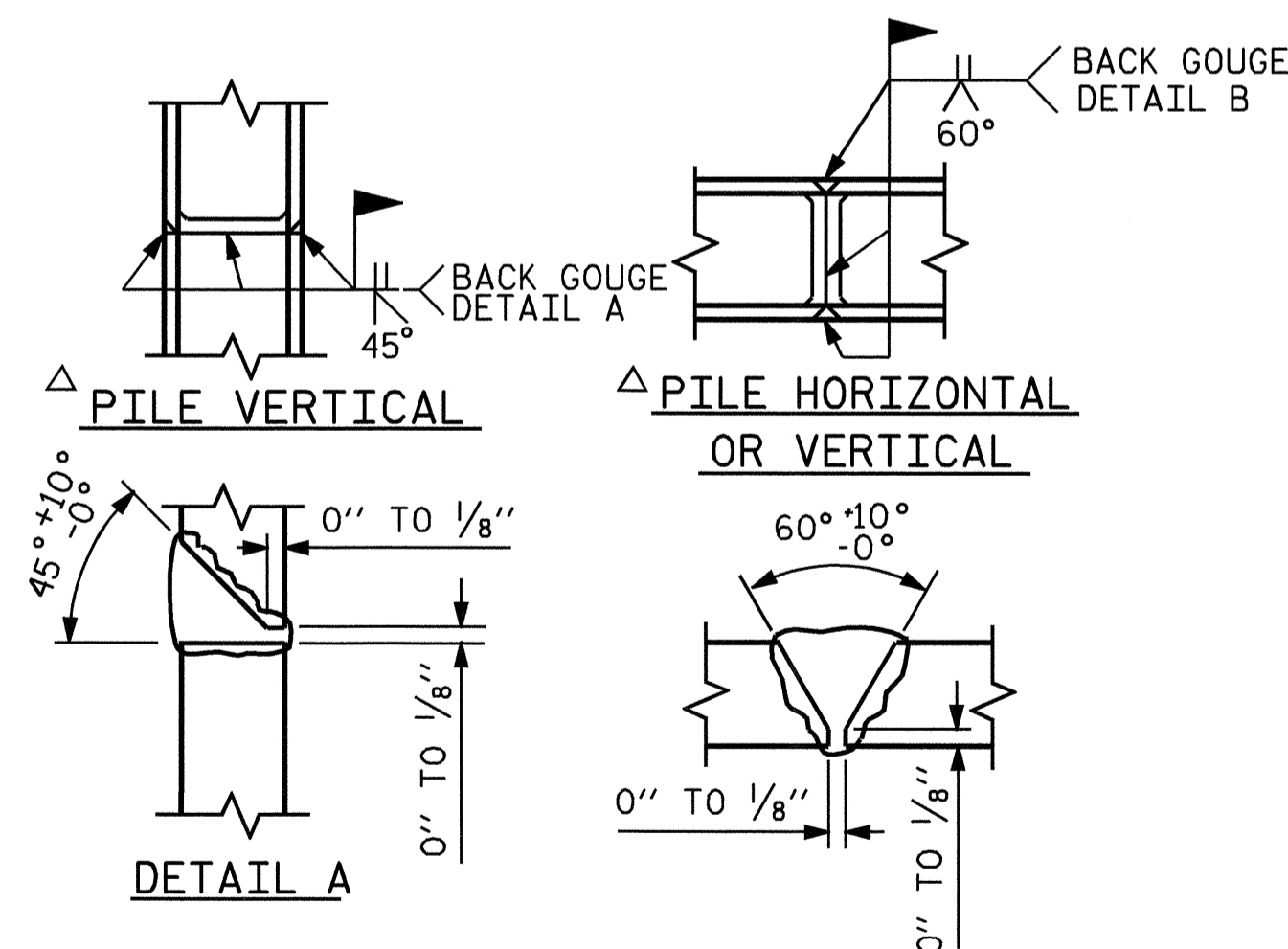
END BENT No. 1

BAR	NO.	SIZE	TYPE	LENGTH	WEIGHT
B1	4	#10	1	51'-10"	892
B2	5	#9	1	51'-6"	876
B3	4	#5	STR	49'-2"	205
B4	8	#4	STR	25'-10"	138
B5	5	#4	STR	7'-6"	25
B6	25	#4	STR	3'-0"	50
B7	13	#4	STR	2'-11"	25
H1	20	#4	3	6'-5"	86
H2	18	#4	4	6'-4"	76
K1	16	#4	STR	25'-10"	276
K2	8	#4	STR	2'-7"	14
S1	47	#4	2	3'-8"	115
S2	47	#4	5	7'-11"	249
S3	20	#4	7	6'-6"	87
U1	44	#4	6	3'-8"	108
U2	26	#4	6	5'-11"	103
V1	88	#4	STR	6'-1"	358
V2	20	#4	STR	7'-8"	102
V3	18	#4	STR	7'-1"	85

REINFORCING STEEL = 3870 LBS

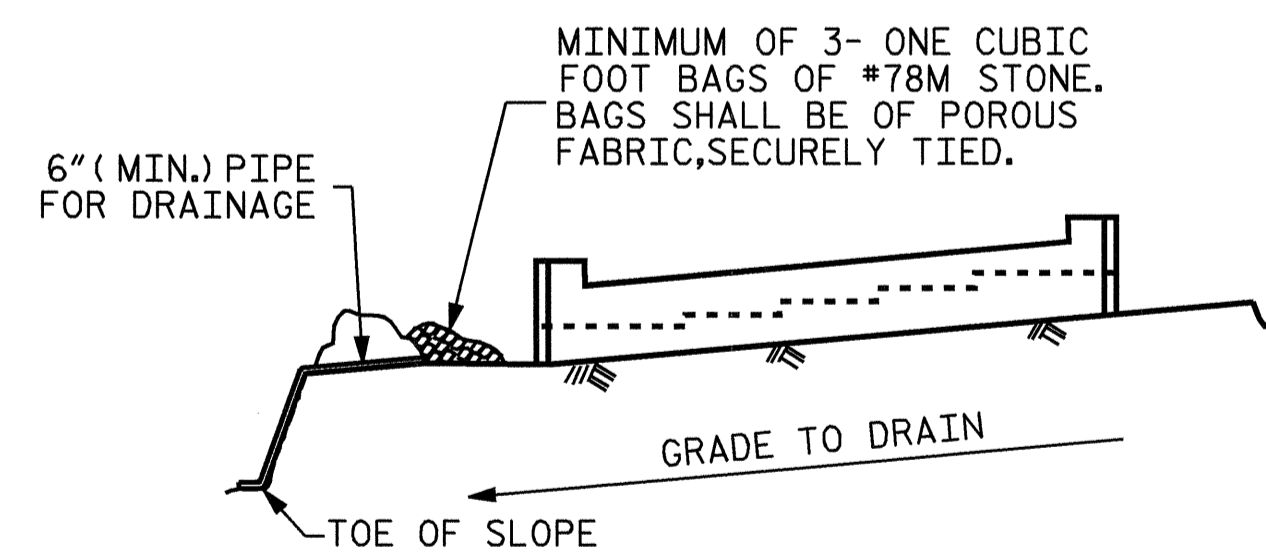
CLASS A CONCRETE BREAKDOWN :
 POUR #1 (CAP & LOWER WINGS) 17.8 C.Y.
 POUR #2 (UPPER WINGS & BACKWALL) 9.0 C.Y.
 TOTAL CLASS A CONCRETE 26.8 C.Y.

HP 12 X 53 STEEL PILES :
 No. 10 150.0 L.F.



POSITION OF PILE DURING WELDING. DETAIL B

PILE SPLICE DETAILS



BAGGED STONE AND PIPE SHALL BE PLACED IMMEDIATELY AFTER COMPLETION OF END BENT EXCAVATION. PIPE MAY BE EITHER CONCRETE, CORRUGATED STEEL, CORRUGATED ALUMINUM ALLOY, OR CORRUGATED PLASTIC. PERFORATED PIPE WILL NOT BE ALLOWED.

BAGGED STONE SHALL REMAIN IN PLACE UNTIL THE ENGINEER DIRECTS THAT IT BE REMOVED. THE CONTRACTOR SHALL REMOVE AND DISPOSE OF SILT ACCUMULATIONS AT BAGGED STONE WHEN SO DIRECTED BY THE ENGINEER. BAGS SHALL BE REMOVED AND REPLACED WHENEVER THE ENGINEER DETERMINES THAT THEY HAVE DETERIORATED AND LOST THEIR EFFECTIVENESS.

NO SEPARATE PAYMENT WILL BE MADE FOR THIS WORK AND THE ENTIRE COST OF THIS WORK SHALL BE INCLUDED IN THE UNIT CONTRACT PRICE BID FOR THE SEVERAL PAY ITEMS.

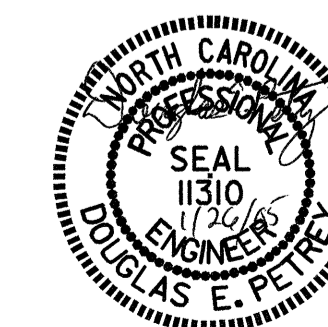
TEMPORARY DRAINAGE AT END BENT

PROJECT NO. B-3694
 ROCKINGHAM COUNTY
 STATION: 17+27.50 -L-

SHEET 3 OF 3

STATE OF NORTH CAROLINA
 DEPARTMENT OF TRANSPORTATION
 RALEIGH

SUBSTRUCTURE
 END BENT No. 1



REVISIONS						SHEET NO.
NO.	BY:	DATE:	NO.	BY:	DATE:	S-20
1			3			TOTAL SHEETS
2			4			36

DRAWN BY : A.R.CHESSON DATE : 12-04
 CHECKED BY : B.N.GRADY DATE : 12-04