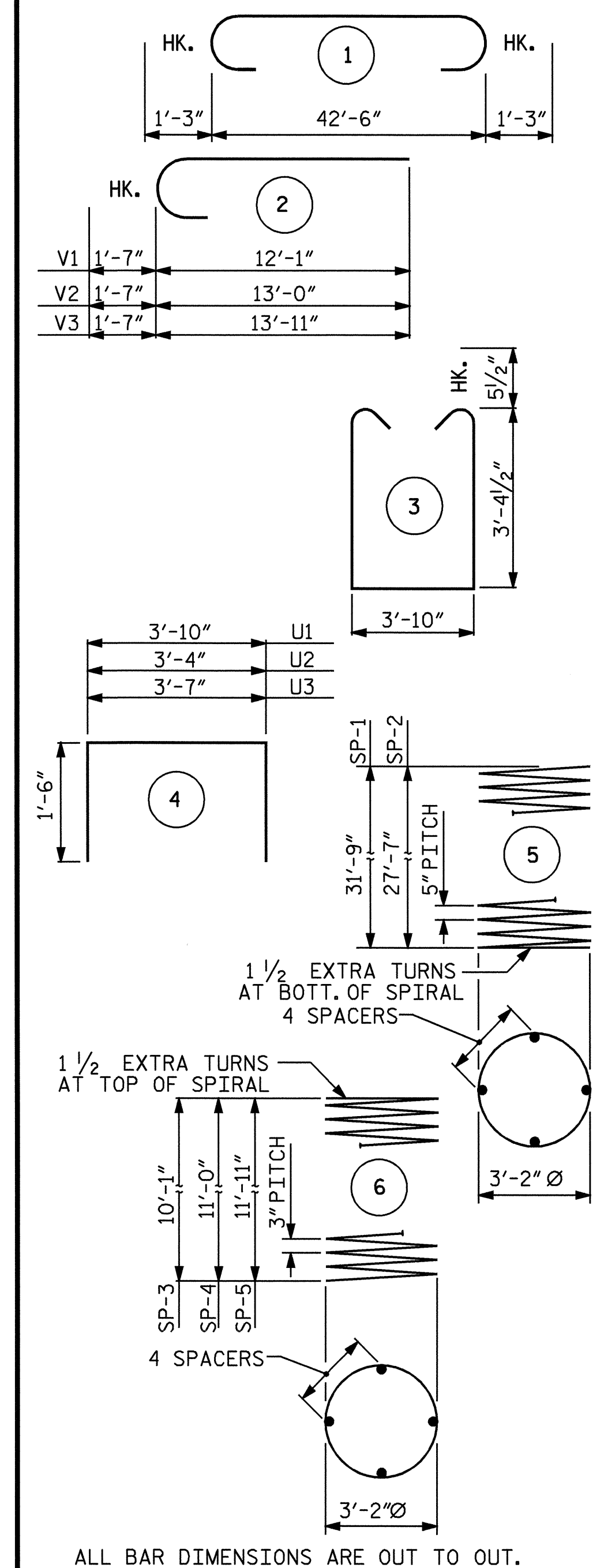


PLAN OF DRILLED PIERS & COLUMNS

REINFORCING STEEL AND DIMENSIONS ARE TYPICAL FOR DRILLED PIERS & COLUMNS

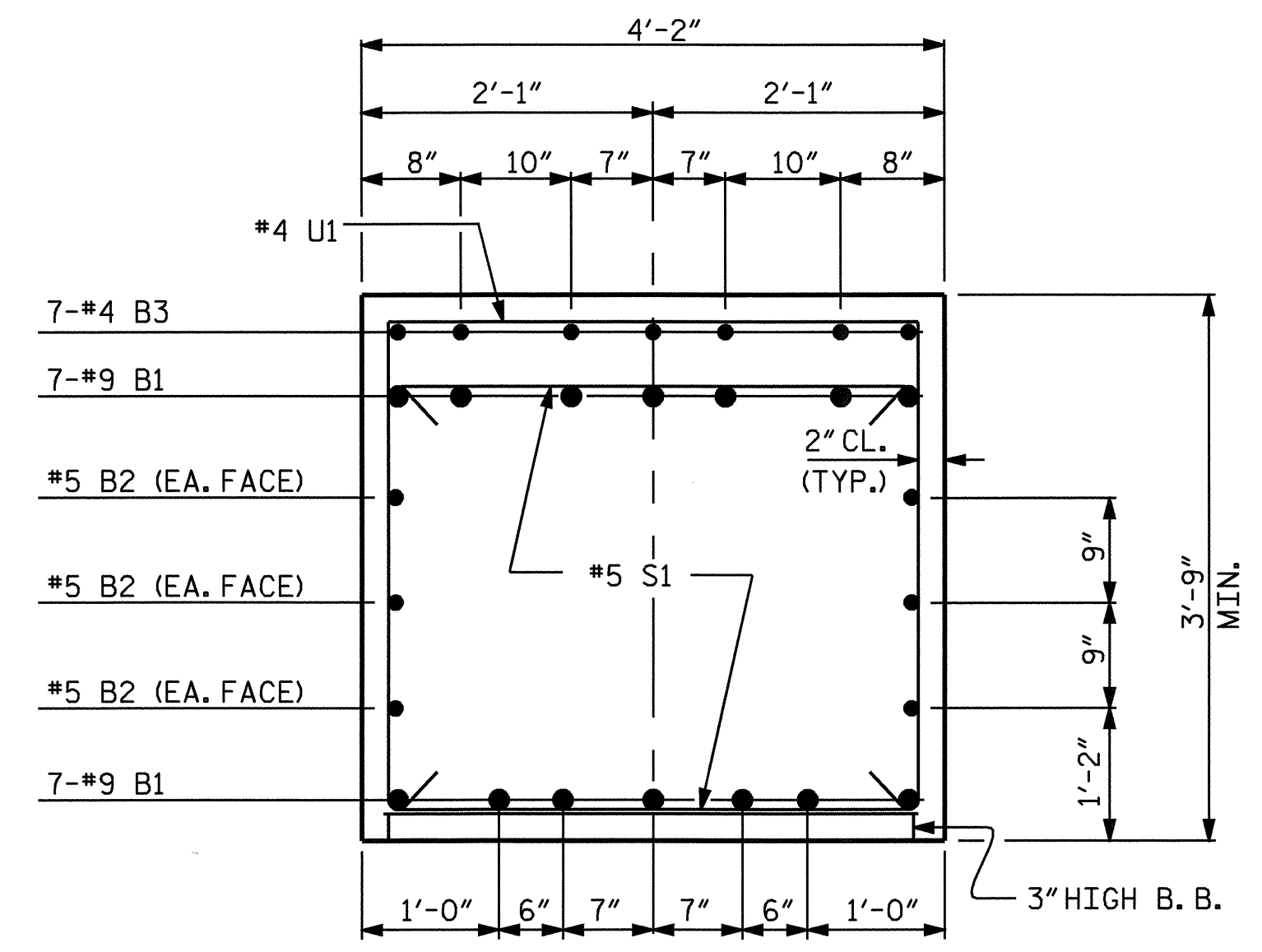
NOTES:
 STIRRUPS AND "U" BARS IN CAP MAY BE SHIFTED AS NECESSARY TO CLEAR ANCHOR BOLTS.
 HOOKS ON "V" BARS MAY BE TURNED AS NECESSARY FOR PLACING REINFORCING STEEL.
 FOR DRILLED PIERS, SEE SPECIAL PROVISIONS.
 ALL STEEL IN THE DRILLED PIERS IS INCLUDED IN THE PAY ITEMS FOR "REINFORCING STEEL" AND "SPIRAL COLUMN REINFORCING STEEL".
 THE CONTRACTOR'S ATTENTION IS CALLED TO THE FACT THAT THE LONGITUDINAL REINFORCEMENT FOR THE DRILLED PIERS IS DETAILED WITH 3 FEET OF EXTRA LENGTH.
 THE LOCATION OF THE CONSTRUCTION JOINT IN THE DRILLED PIERS IS BASED ON AN APPROXIMATE GROUND LINE ELEVATION. IF THE CONSTRUCTION JOINT IS ABOVE THE ACTUAL GROUND LINE ELEVATION, THE CONTRACTOR SHALL PLACE THE CONSTRUCTION JOINT 1 FT. BELOW THE GROUND LINE.
 FOR PERMANENT STEEL CASING, SEE DRILLED PIER SPECIAL PROVISION.

BAR TYPES

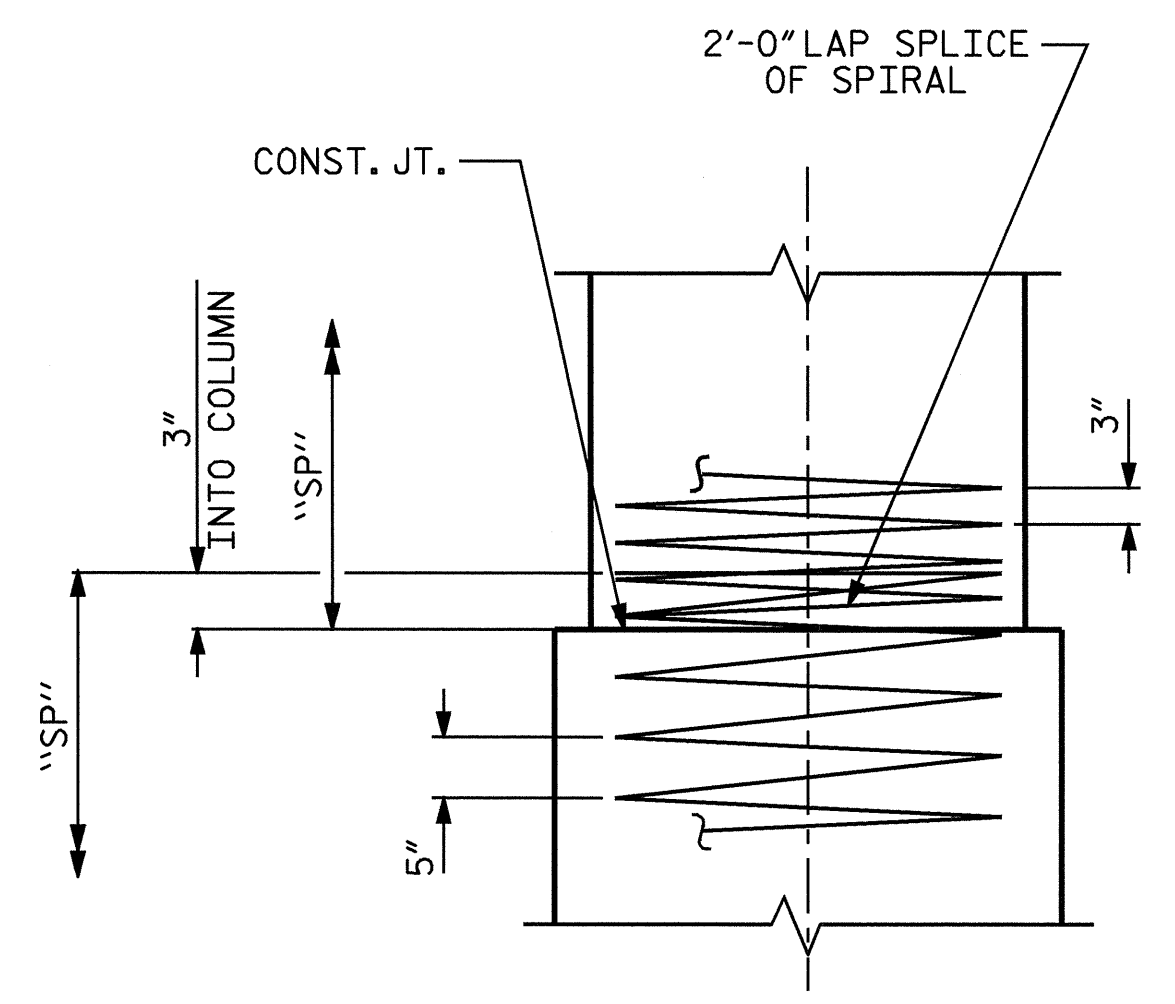


BILL OF MATERIAL

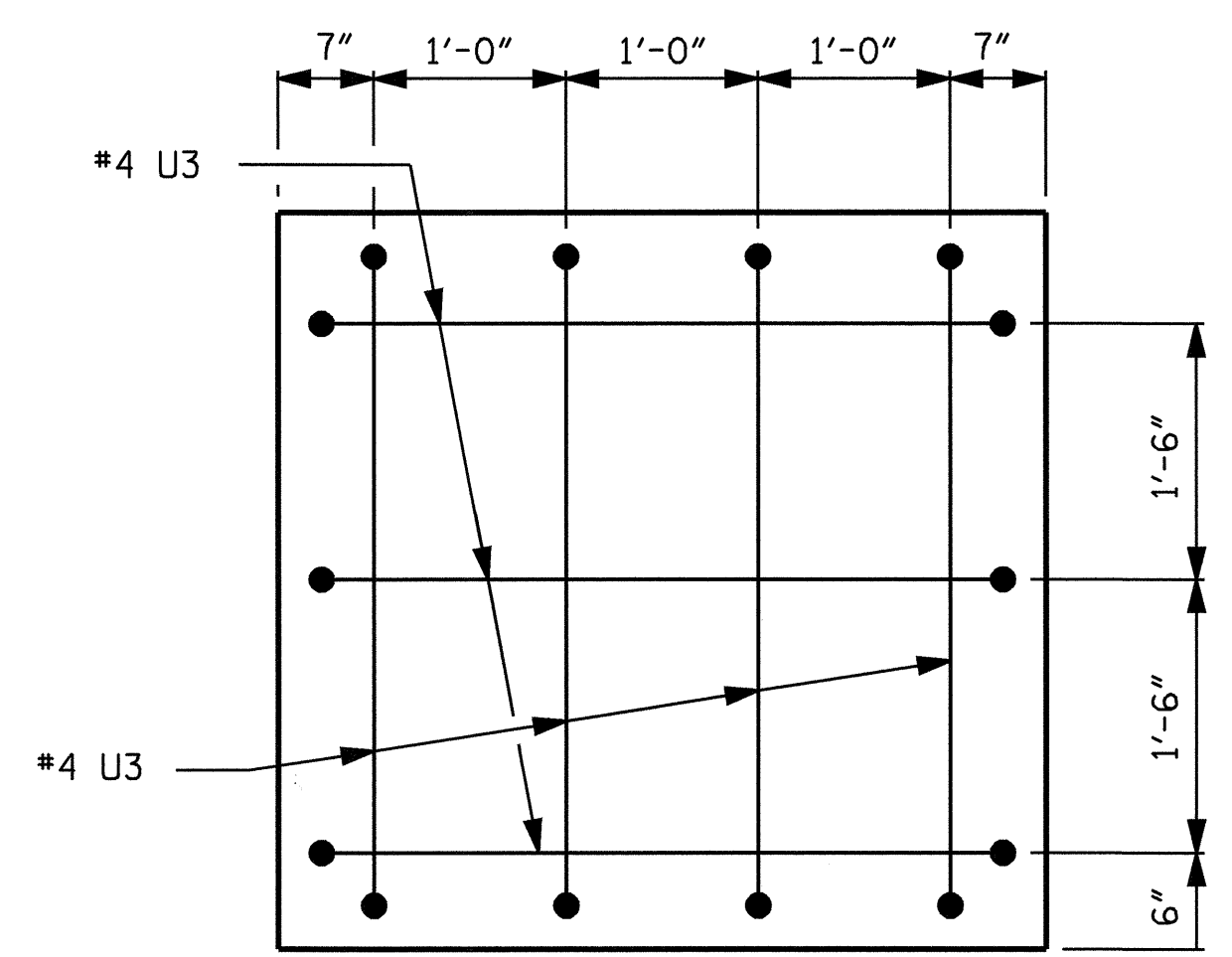
BENT No. 2					
BAR NO.	SIZE	TYPE	LENGTH	WEIGHT	
B1	14	9	1	45'-0"	2142
B2	6	5	STR.	42'-8"	267
B3	35	4	STR.	3'-11"	92
B4	7	4	STR.	4'-3"	20
S1	44	5	3	11'-6"	528
U1	42	4	4	6'-10"	192
U2	4	4	4	6'-4"	17
U3	10	4	4	6'-7"	44
M1	24	11	STR.	42'-3"	5387
M2	12	11	STR.	38'-1"	2428
V1	12	11	2	13'-8"	871
V2	12	11	2	14'-7"	930
V3	12	11	2	15'-6"	988
REINFORCING STEEL				LBS.	13,906
SP-1	2	*	5	763'-11"	1592
SP-2	1	*	5	666'-0"	695
SP-3	1	*	6	412'-6"	276
SP-4	1	*	6	451'-10"	302
SP-5	1	*	6	491'-1"	328
SPIRAL COLUMN REINFORCING STEEL				LBS.	3193
* THE SP-3, SP-4, & SP-5 SPIRAL REINFORCING STEEL SHALL BE W20 OR D-20 COLD DRAWN WIRE OR #4 PLAIN OR DEFORMED BAR.					
** THE SP-1 AND SP-2 SPIRAL REINFORCING STEEL SHALL BE W31 OR D-31 COLD DRAWN WIRE OR #5 PLAIN OR DEFORMED BAR.					
CLASS A CONCRETE BREAKDOWN :					
POUR #2 (COLUMNS)				11.5 C. Y.	
POUR #3 (CAP)				26.3 C. Y.	
TOTAL				37.8 C. Y.	
4'-0" Ø DRILLED PIER QUANTITIES					
DRILLED PIER CONCRETE POUR #1 (DRILLED PIERS)				43.1 C. Y.	
4'-0" Ø DRILLED PIERS NOT IN SOIL				18.5 LIN. FT.	
4'-0" Ø DRILLED PIERS IN SOIL				74.1 LIN. FT.	
CROSSHOLE SONIC LOGGING				1 EA.	
CSL TUBES				400 LIN. FT.	
PERMANENT STEEL CASING				64.1 LIN. FT.	



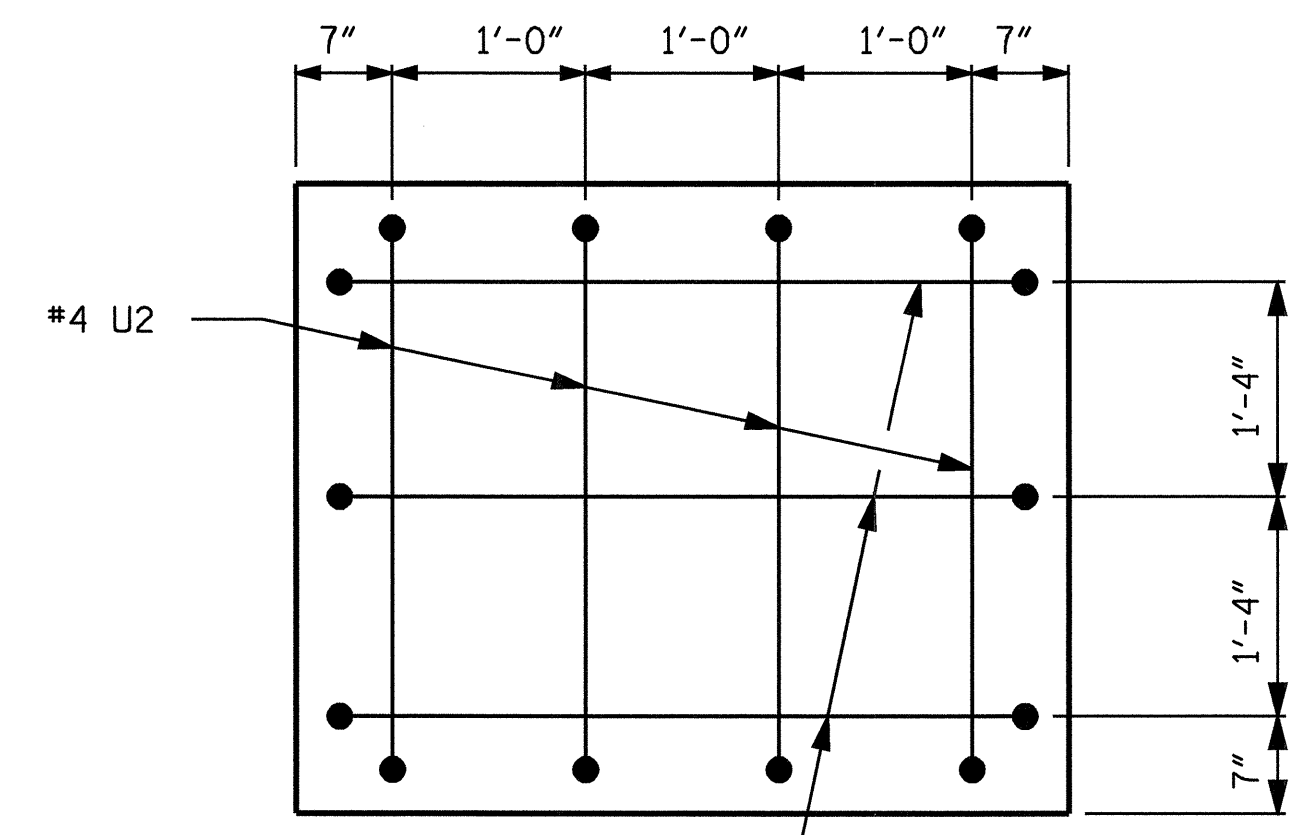
SECTION A-A



CONSTRUCTION JOINT DETAIL



VIEW X-X



VIEW Y-Y

DRAWN BY: R. G. EMERSON DATE: 09/04
 CHECKED BY: A. R. CHESSON DATE: 01/05



PROJECT NO. B-3694
 ROCKINGHAM COUNTY
 STATION: 17+27.50 -L-

SHEET 2 OF 2

REVISIONS						SHEET NO.
NO.	BY:	DATE:	NO.	BY:	DATE:	S-24
1			3			TOTAL SHEETS
2			4			36

STATE OF NORTH CAROLINA
 DEPARTMENT OF TRANSPORTATION
 RALEIGH

SUBSTRUCTURE
 BENT No. 2