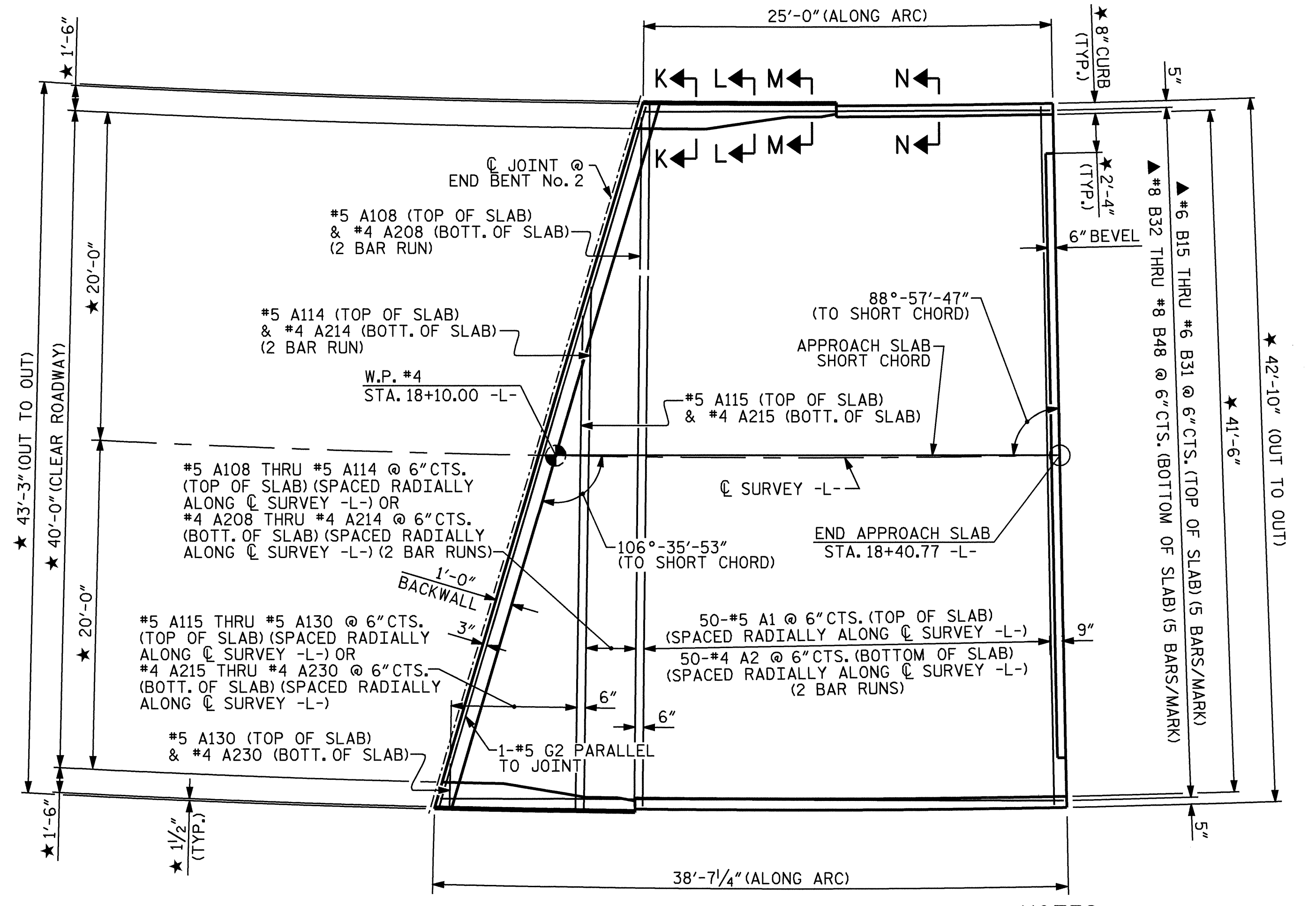


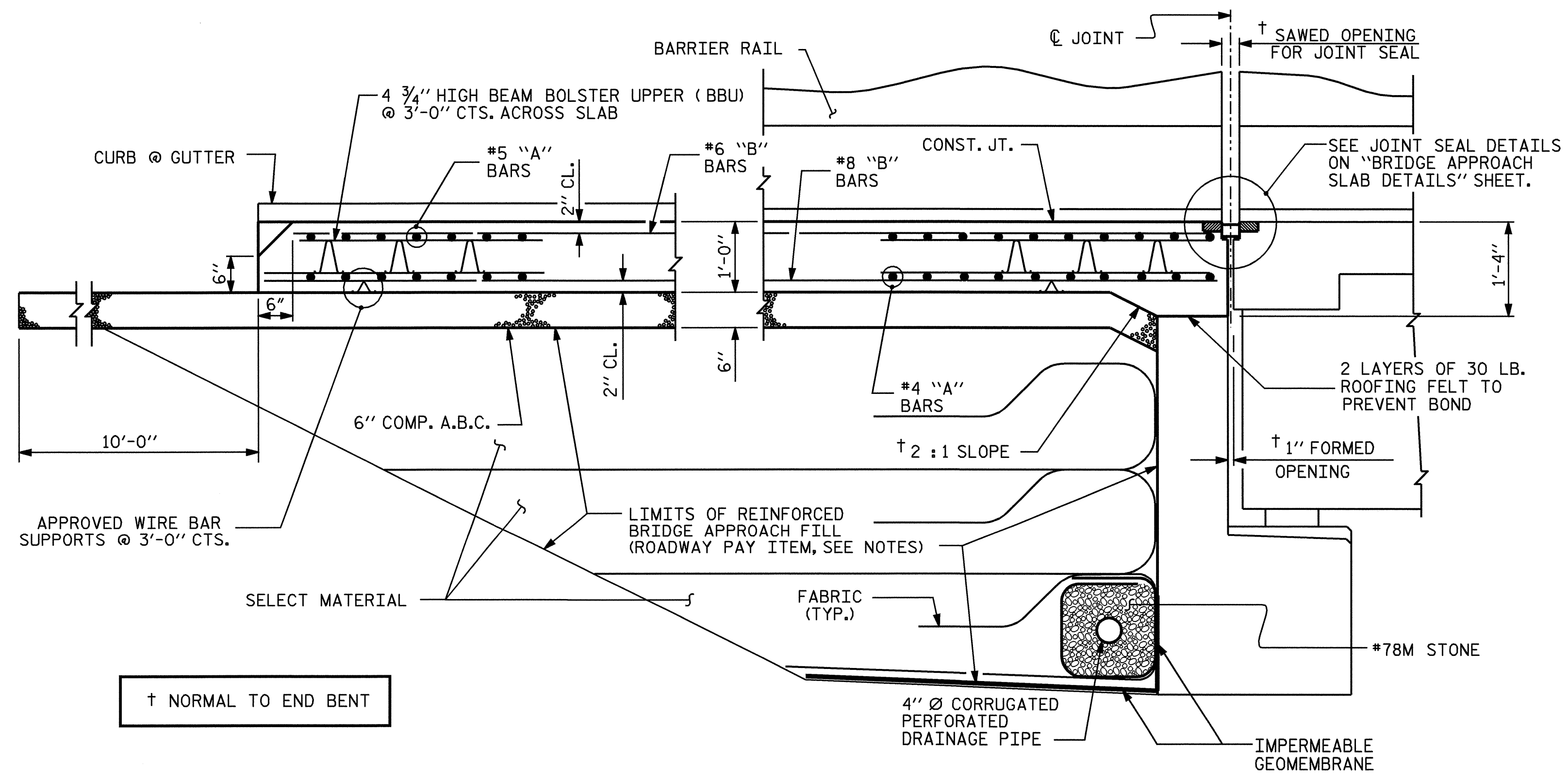
AT END BENT No. 1



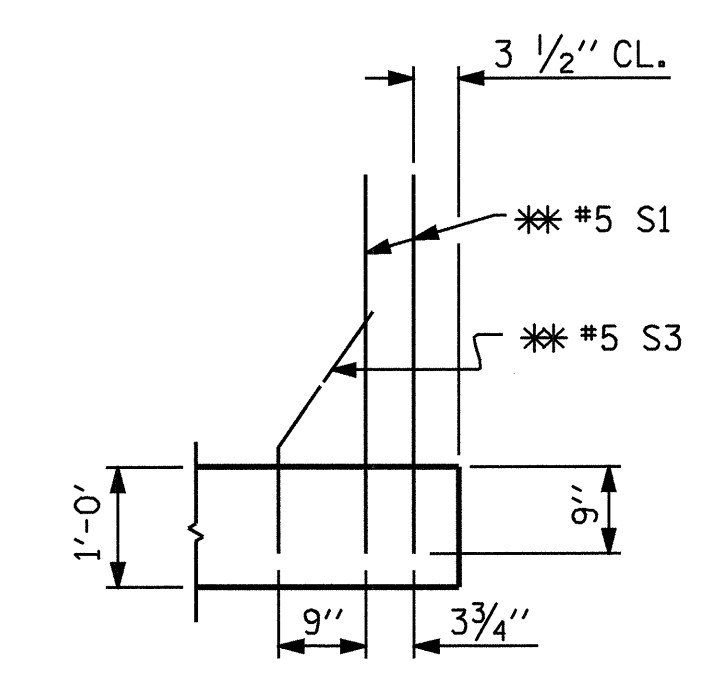
AT END BENT No. 2

PLAN OF APPROACH SLAB

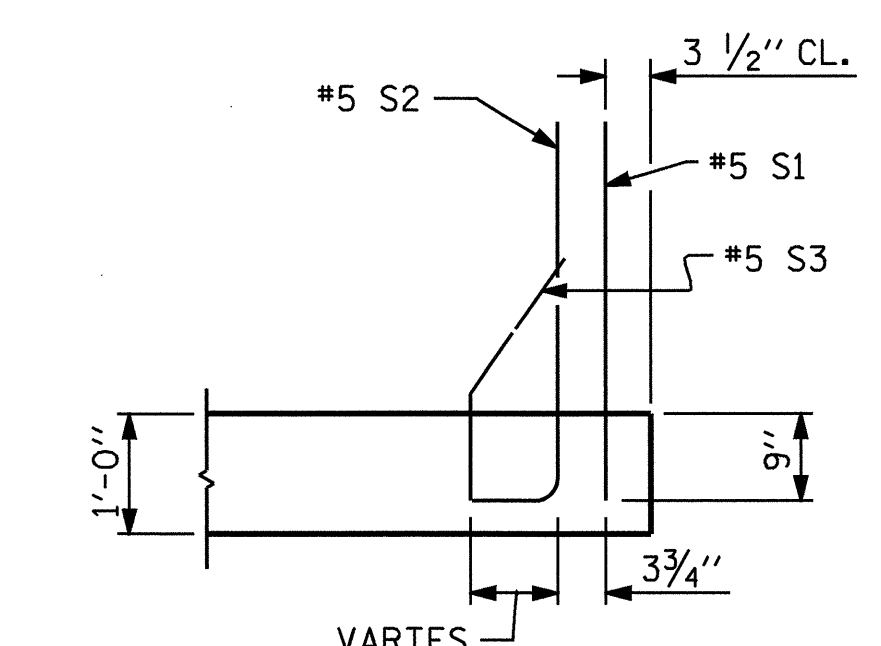
NOTES:
 FOR ADDITIONAL NOTES, SEE SHEET 4 OF 5.
 * MEASURED RADIALLY
 ▲ "B" BARS SHALL BE PLACED ON THE APPROACH SLAB LONG CHORD OF CONCENTRIC ARCS.
 FOR ARC OFFSETS AT END BENT No. 1 AND END BENT No. 2, SEE SHEET 2 OF 5.



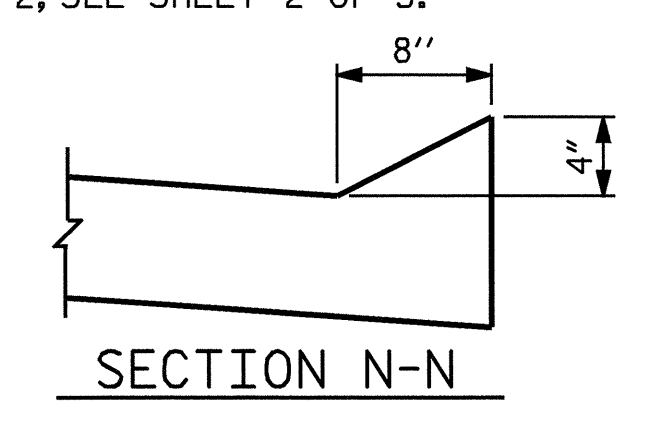
SECTION THRU SLAB



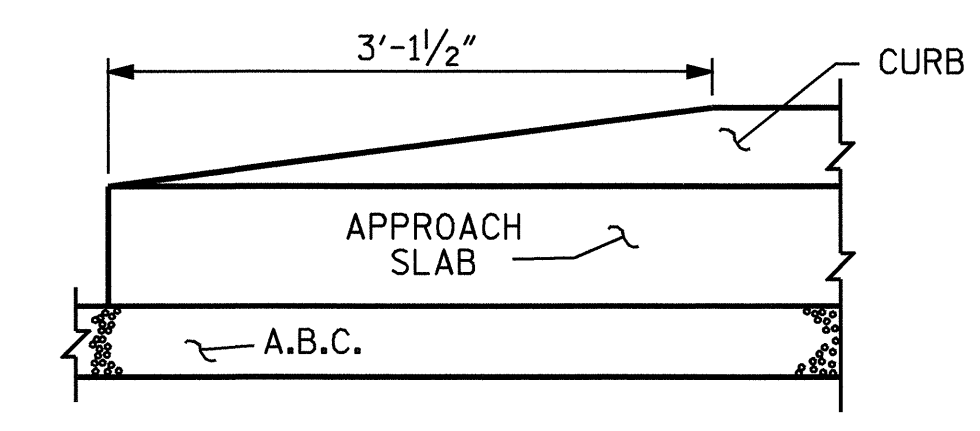
SECTION K-K
 ** ADHESIVELY ANCHORED



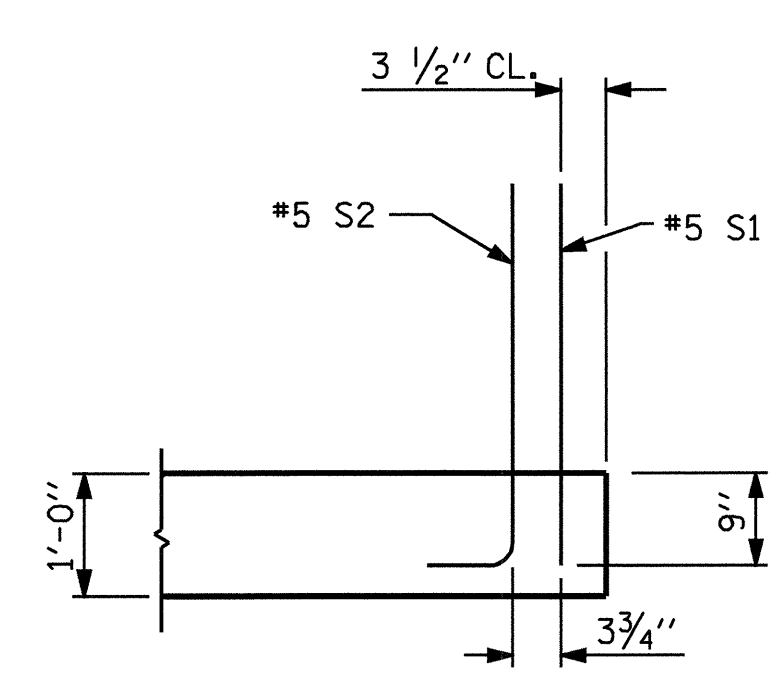
SECTION L-L



SECTION N-N



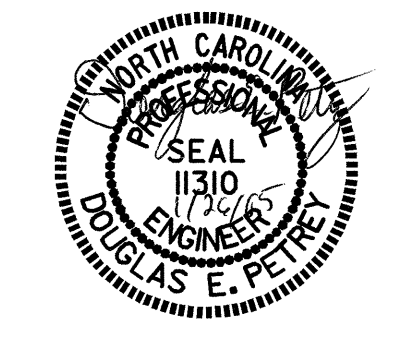
END OF CURB WITHOUT SHOULDER BERM GUTTER



SECTION M-M

ASSEMBLED BY : A. V. ROYAL DATE : 8/04
 CHECKED BY : P. C. BREWER DATE : 9/16/04
 DRAWN BY : LES 8/01 REV. 5/7/03R RWW/JTE
 CHECKED BY : RDR 8/01

26-JAN-2005 11:44
 W:\squadw\3694\aroyal\B-3694.ed.AS.01.dgn
 achesson



PROJECT NO. B-3694
 ROCKINGHAM COUNTY
 STATION: 17+27.50 -L-

SHEET 1 OF 5

REVISIONS						SHEET NO.	
NO.	BY:	DATE:	NO.	BY:	DATE:	S-29	
1			3			TOTAL SHEETS	
2			4			36	

STD. NO. BAS5