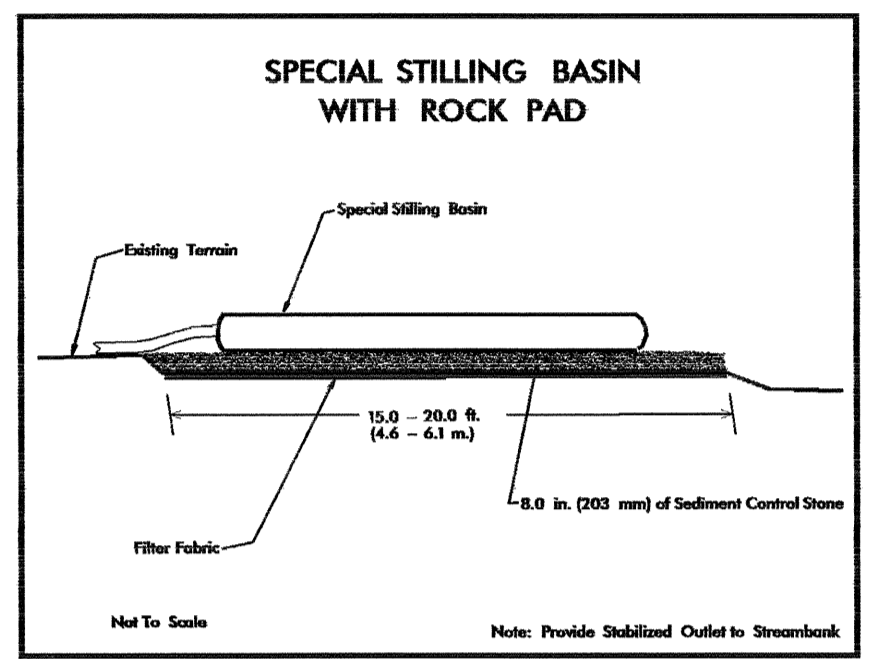


| | |
|-------------------------|---------------------|
| PROJECT REFERENCE NO. | SHEET NO. |
| B-3694 | EC-4/CONST. 4 |
| RW SHEET NO. | 4 |
| ROADWAY DESIGN ENGINEER | HYDRAULICS ENGINEER |

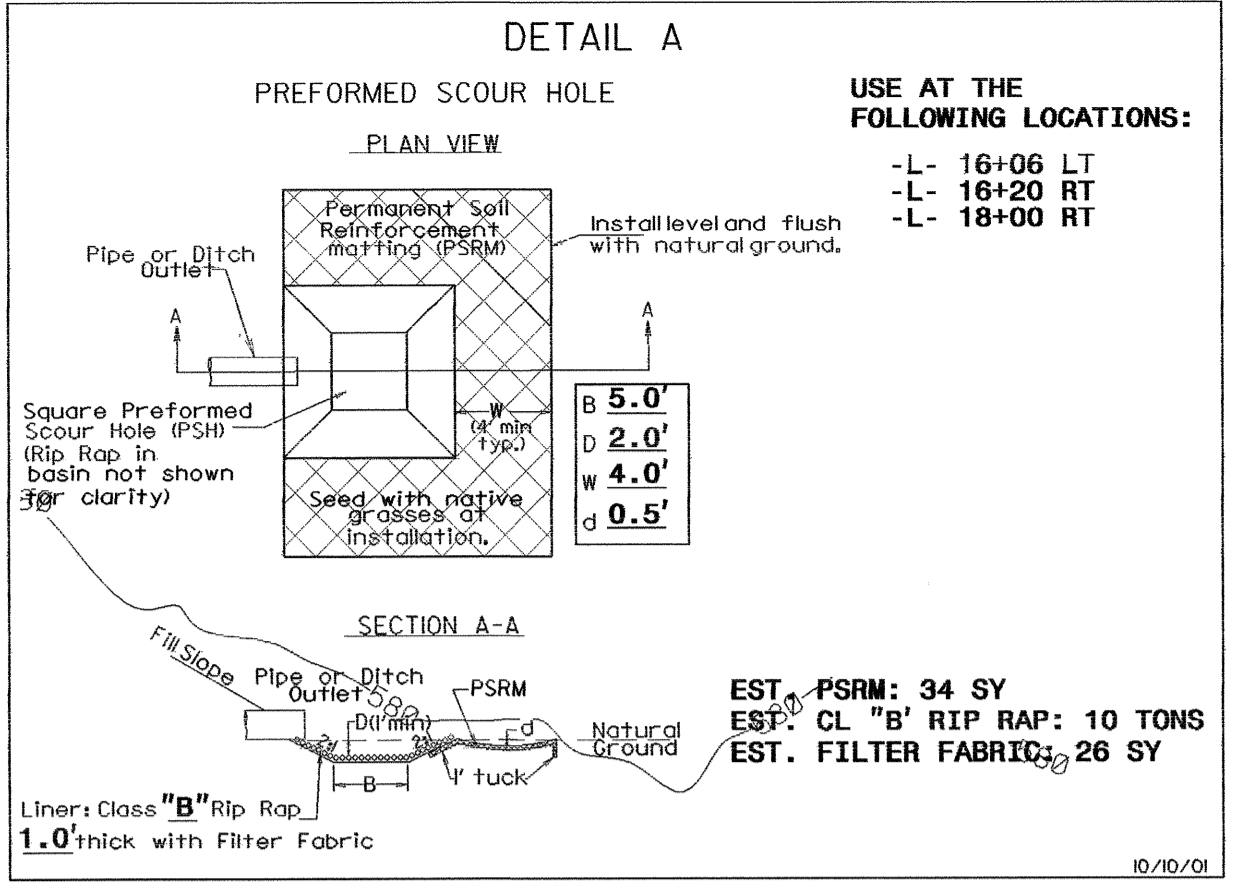
CLEARING AND GRUBBING
EROSION CONTROL FOR
CONSTRUCTION SHEET 4

NOTE:
PLACE TEMPORARY ROCK SEDIMENT DAMS TYPE-B
AND TEMPORARY ROCK SILT CHECKS TYPE-A AT
DRAINAGE OUTLETS.

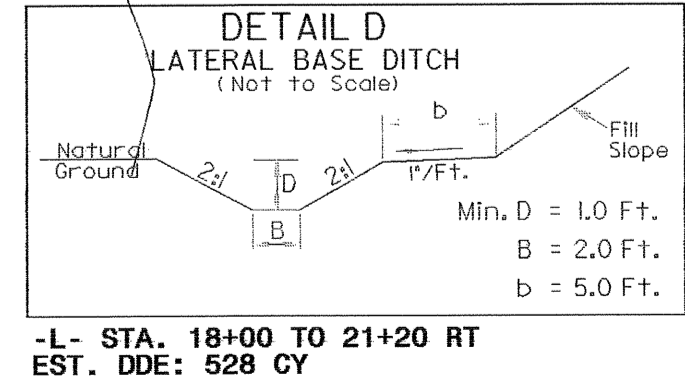
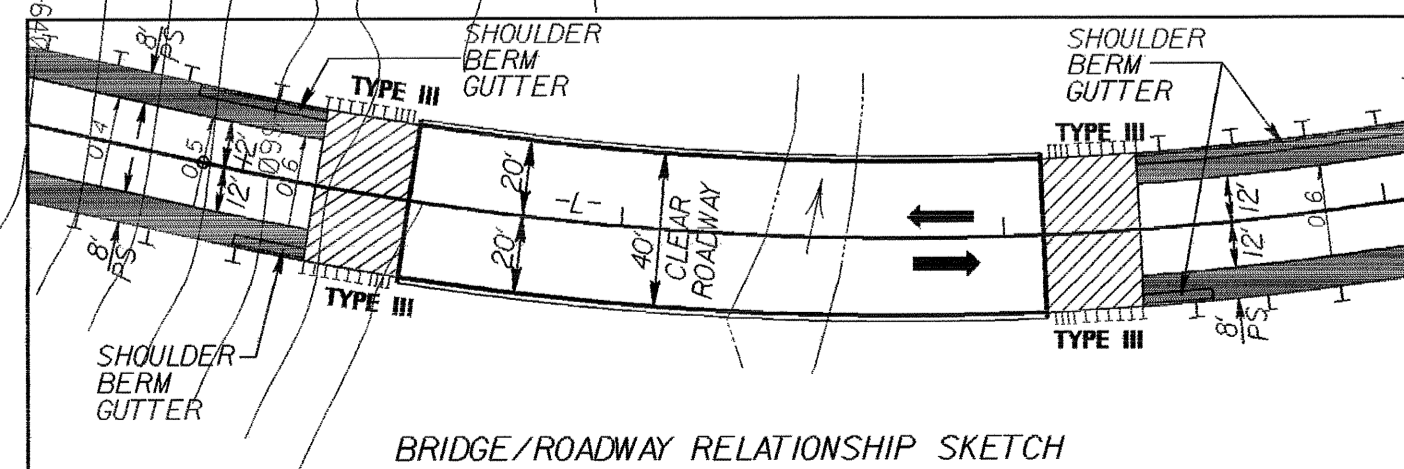
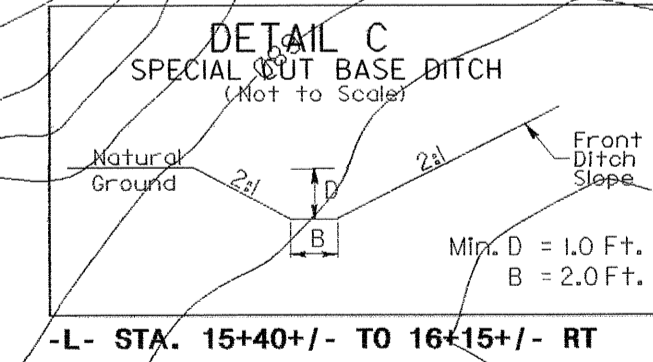
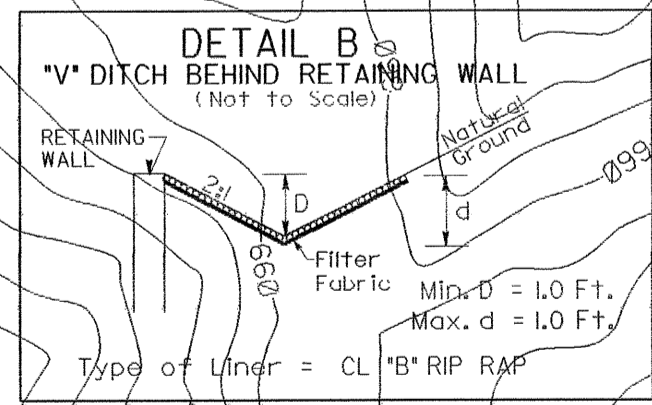
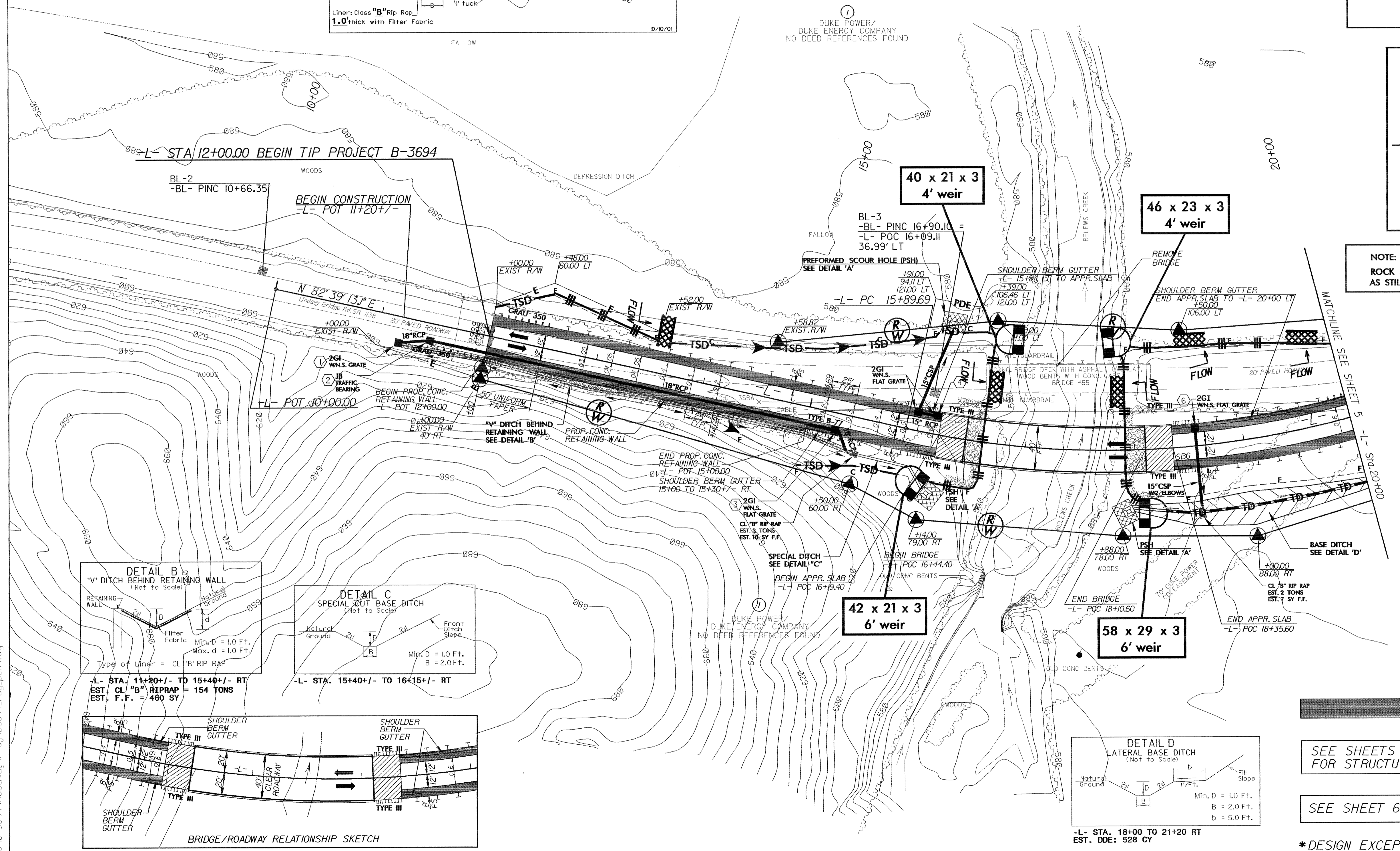
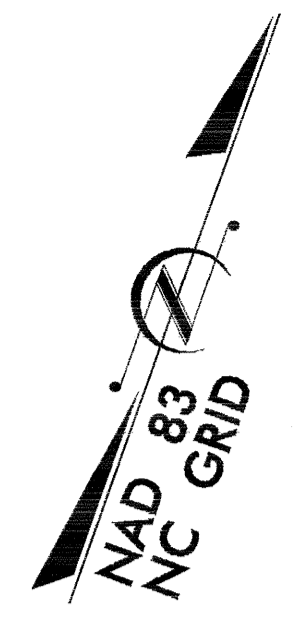


NOTE: UTILIZE SPECIAL STILLING BASIN AND OR TEMPORARY
ROCK SEDIMENT DAM TYPE - B
AS STILLING BASIN WHERE APPLICABLE.

DATUM DESCRIPTION
THE LOCALIZED COORDINATE SYSTEM DEVELOPED FOR THIS PROJECT
IS BASED ON THE STATE PLANE COORDINATES ESTABLISHED BY
NCGS FOR MONUMENT "RIVERCO"
WITH NAD 83 STATE PLANE GRID COORDINATES OF
NORTHING: 939853.33(1) EASTING: 1695829.16(1)
THE AVERAGE COMBINED GRID FACTOR USED ON THIS PROJECT
(GROUND TO GRID) IS: 1.000024394
THE N.C. LAMBERT GRID BEARING AND
LOCALIZED HORIZONTAL GROUND DISTANCE FROM
"RIVERCO" TO L- STATION 12+00.00 IS
N 77°41'49.8" E 778.48'
ALL LINEAR DIMENSIONS ARE LOCALIZED HORIZONTAL DISTANCES
VERTICAL DATUM USED IS NGVD 29



-L-
PI Sta 21+72.25
 $\Delta = 68' 51" 04.4" (LT)$
 $D = 6' 44" 26.4"$
 $L = 1,021.43'$
 $T = 582.57'$
 $R = 850.00' *$
 $SE = 0.06$
 $RO = \text{SEE PLANS}$
 $DS = 40\text{mph} **$



DENOTES PAVED SHOULDERS,
RETAINING WALL &
SHOULDER BERM GUTTER

SEE SHEETS S-1 THRU S-
FOR STRUCTURE PLANS

SEE SHEET 6 FOR -L- PROFILE

* DESIGN EXCEPTION REQUIRED FOR
MINIMUM HORIZONTAL CURVE RADIUS
** DESIGN EXCEPTION REQUIRED FOR HORIZONTAL SSD.
HORIZONTAL SSD MEETS A 40 MPH DESIGN SPEED

8/17/99
B-3694-Roadway-Pr-j\B3694-rdy-ps-h4.dwg
3-JAN-2005 14:36
D:\e_j\B3694-Roadway-Pr-j\B3694-rdy-ps-h4.dwg