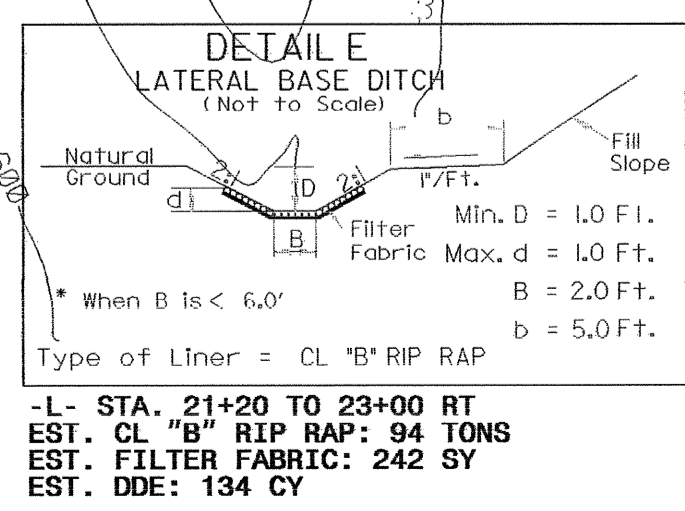
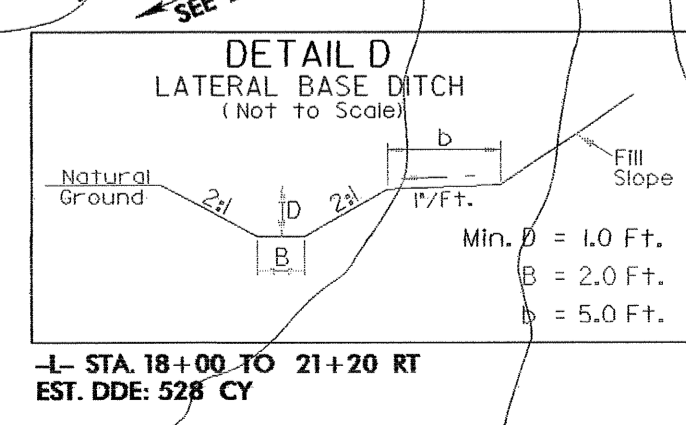
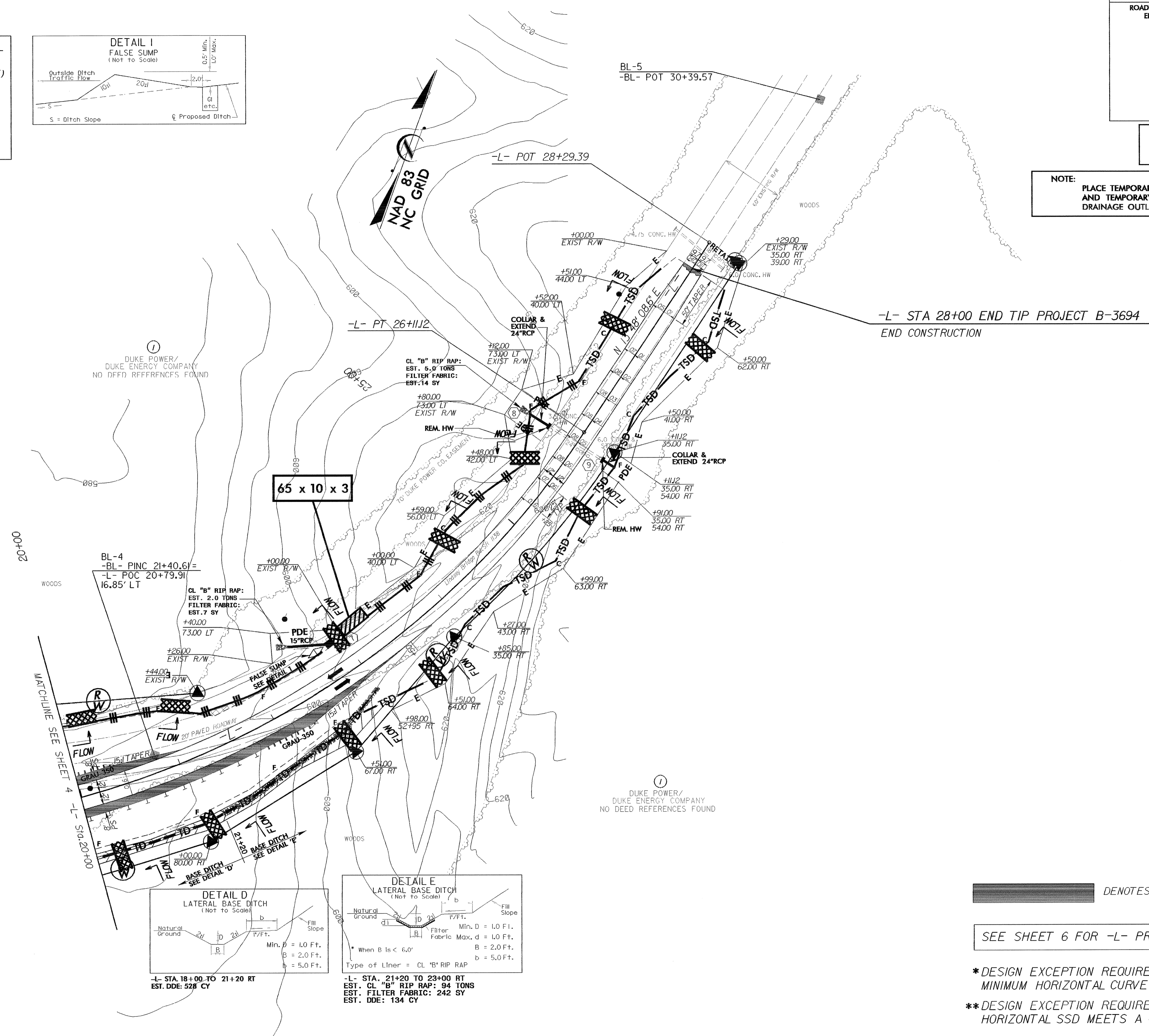
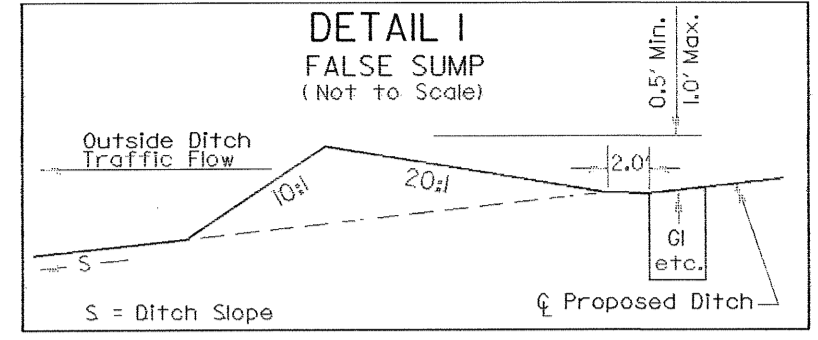


PROJECT REFERENCE NO.	SHEET NO.
B-3694	EC-5/CONST.5
R/W SHEET NO.	5
ROADWAY DESIGN ENGINEER	HYDRAULICS ENGINEER

CLEARING AND GRUBBING  
EROSION CONTROL FOR  
CONSTRUCTION SHEET 5

NOTE:  
PLACE TEMPORARY ROCK SEDIMENT DAMS TYPE-B  
AND TEMPORARY ROCK SILT CHECKS TYPE-A AT  
DRAINAGE OUTLETS.

-L-  
PI Sta 21+72.25  
 $\Delta = 68^{\circ} 51' 04.4''$  (LT)  
D = 6' 44" 26.4"  
L = 1,021.43'  
T = 582.57'  
R = 850.00'  
SE = 0.06  
RO = SEE PLANS  
DS = 40mph \*\*



DENOTES PAVED SHOULDERS

SEE SHEET 6 FOR -L- PROFILE

\*DESIGN EXCEPTION REQUIRED FOR  
MINIMUM HORIZONTAL CURVE RADIUS  
\*\*DESIGN EXCEPTION REQUIRED FOR HORIZONTAL SSD.  
HORIZONTAL SSD MEETS A 40 MPH DESIGN SPEED

8/17/99  
 13-JAN-2005 11:38  
 D:\rev\B-3694\Roadway\Proj\B3694\_rdy\_psh5.dgn  
 cursor