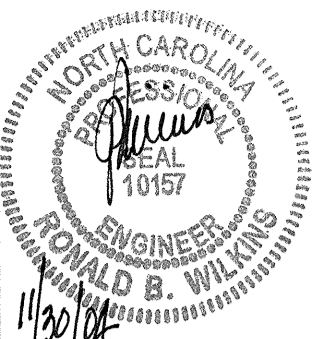


8/17/99

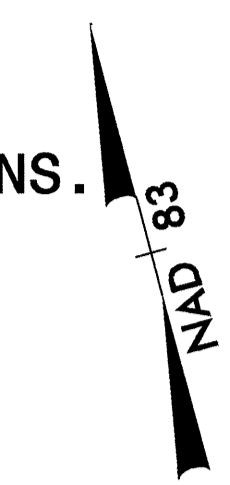
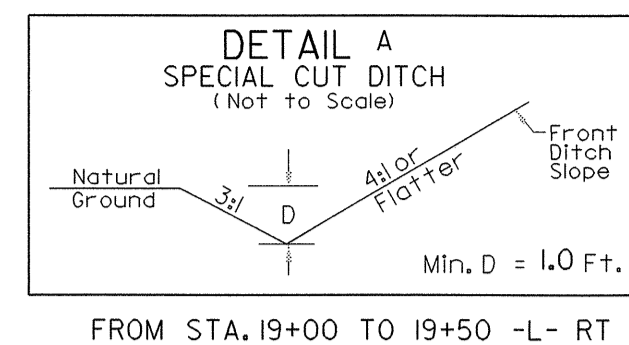
PROJECT REFERENCE NO. B-4248	SHEET NO. UC-2
DESIGNED BY: CSG	
DRAWN BY: CSG	
CHECKED BY: RBW	
APPROVED BY: RBW	
REVISED:	
NORTH CAROLINA DEPARTMENT OF TRANSPORTATION	
DESIGN SERVICES UNIT PHONE: (919) 250-4128 FAX: (919) 250-4119	
UTILITY CONSTRUCTION PLANS ONLY	

UTILITY NOTES

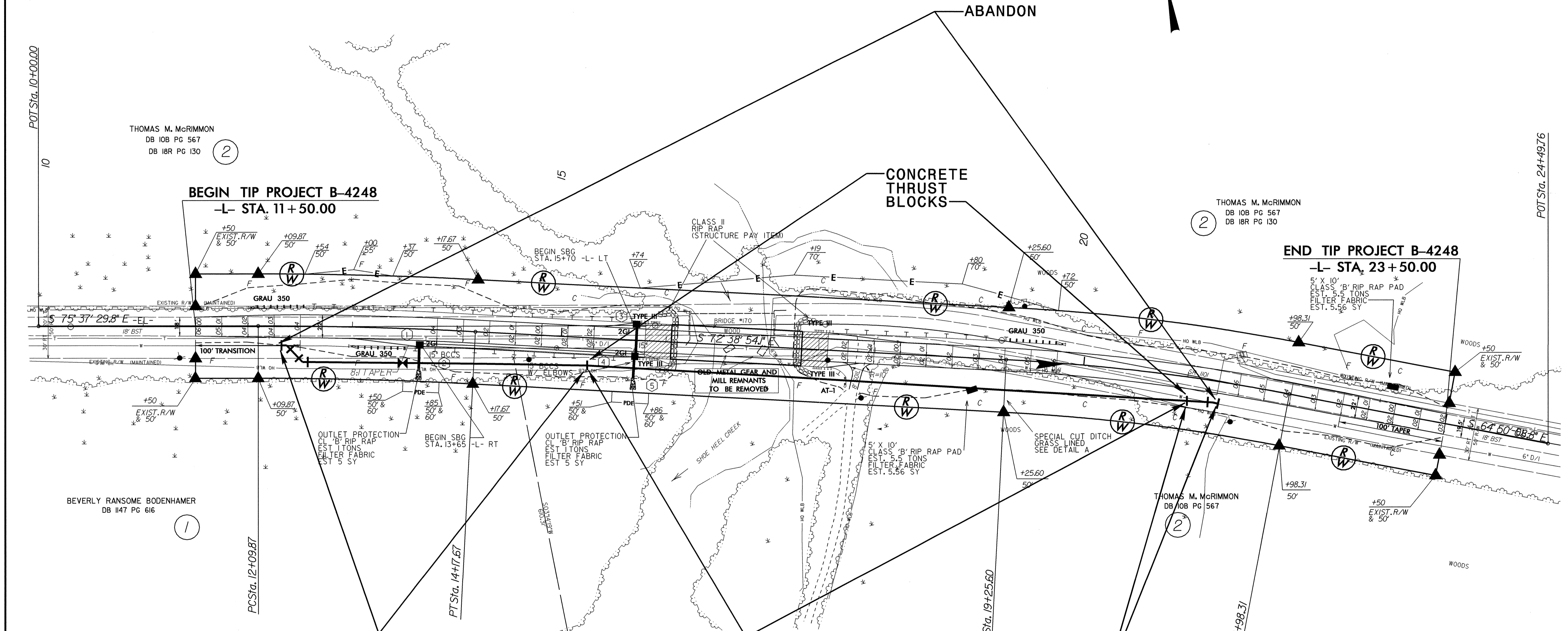
THE EXISTING WATER LINE IS OWNED BY ROBESON COUNTY PUBLIC WORKS.

THE CONTRACTOR SHALL MAKE ALL CONNECTIONS USING NECESSARY FOOTINGS.

SEE PROJECT PROPOSAL FOR UTILITY SPECIAL PROVISIONS.



UTILITY CONSTRUCTION



PROP. 299'-6" PVC WATER PIPE, SDR 21, 200# WP
 PROP. 2-6" 45° DI BENDS
 PROP. 1-200MM GATE VALVE & VALVE BOX, 200# WP
 PROP. 1-6" X 8" DI REDUCER

PROP. 575'-8" HDPE WATER PIPE, SDR 9, BY DIRECTIONAL BORE

PROP. 30'-6" PVC WATER PIPE, SDR 21,
 PROP. 1-8" X 6" DI REDUCER
 PROP. 1-6" 11 1/2° DI BEND

-L-	
PI Sta. 13+13.80	PI Sta. 20+62.16
$\Delta = 2' 58' 35.7" (RT)$	$\Delta = 7' 48' 45.3" (RT)$
$D = 1' 25' 56.6"$	$D = 2' 51' 53.2"$
$L = 207.80'$	$L = 272.71'$
$T = 103.93'$	$T = 136.57'$
$R = 4,000.00'$	$R = 2,000.00'$
$S.E. = .04$	$S.E. = .06$
$RO = 96'$	$RO = 144'$

FOR -L- PROFILE SEE SHEET 5

FOR STRUCTURE PLANS SEE SHEET S - S

30-NOV-2004 14:27 L:\p\proj\UC2B4248_rdu_rsh.dgn

POT Sta. 10+00.00

10

THOMAS M. McRIMMON
DB IOB PG 567
DB IBR PG 130

2

BEVERLY RANSOME BODENHAMER
DB I147 PG 616

1

THOMAS M. McRIMMON
DB IOB PG 567
DB IBR PG 130

2

POT Sta. 24+49.76

END TIP PROJECT B-4248
-L- STA. 23+50.00

5' X 10' CLASS 'B' RIP RAP PAD
EST. 5.5 TONS
FILTER FABRIC
EST. 5.56 SY

THOMAS M. McRIMMON
DB IOB PG 567

2

+50
EXIST. R/W & 50'