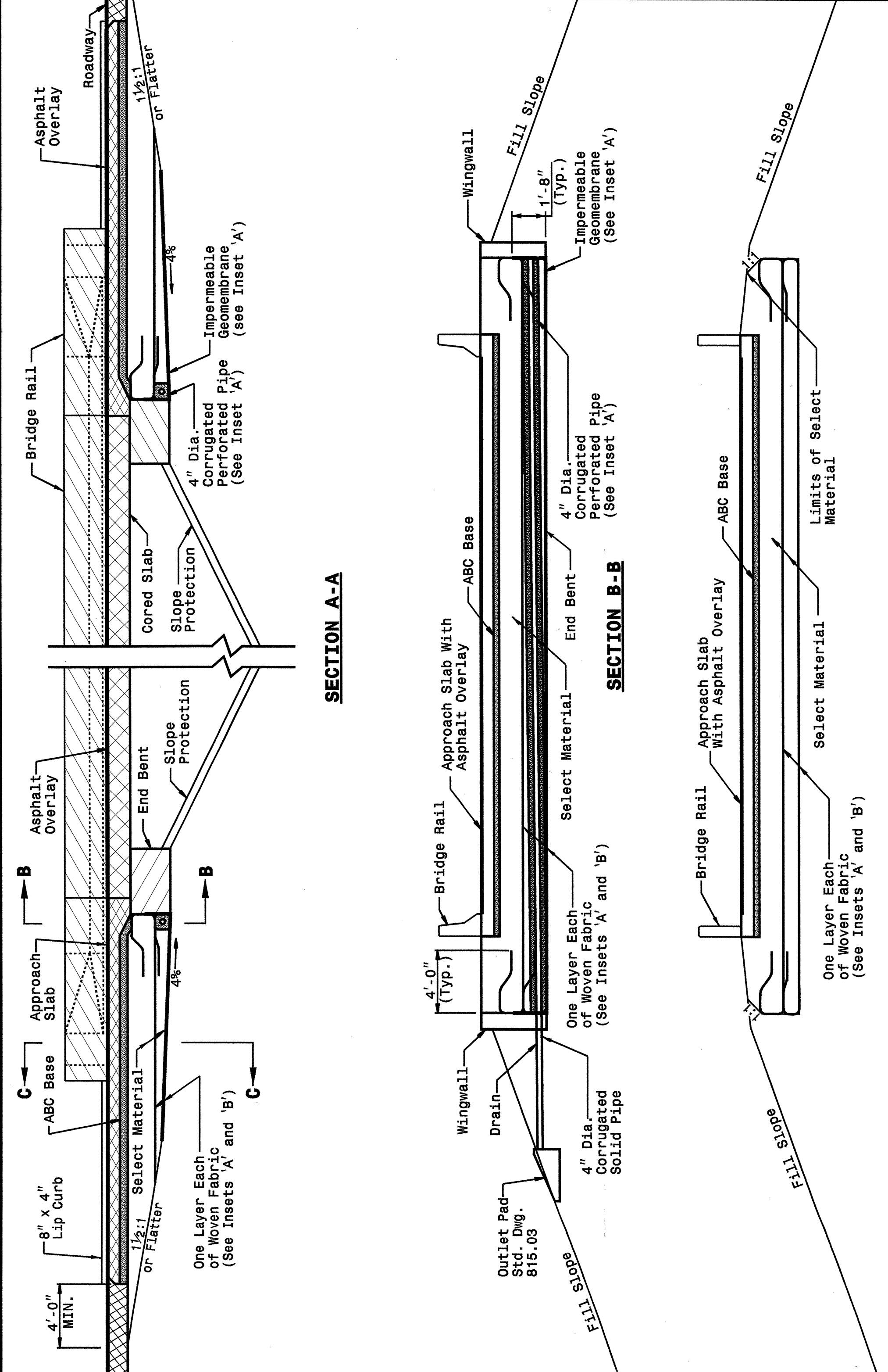


STATE OF
NORTH CAROLINA
DEPT. OF TRANSPORTATION
DIVISION OF HIGHWAYS
RALEIGH, N.C.

ENGLISH DETAIL DRAWING FOR
REINFORCED BRIDGE APPROACH FILLS
CORED SLAB BRIDGES

SHEET 3 OF 4
422D10



STATE OF
NORTH CAROLINA
DEPT. OF TRANSPORTATION
DIVISION OF HIGHWAYS
RALEIGH, N.C.

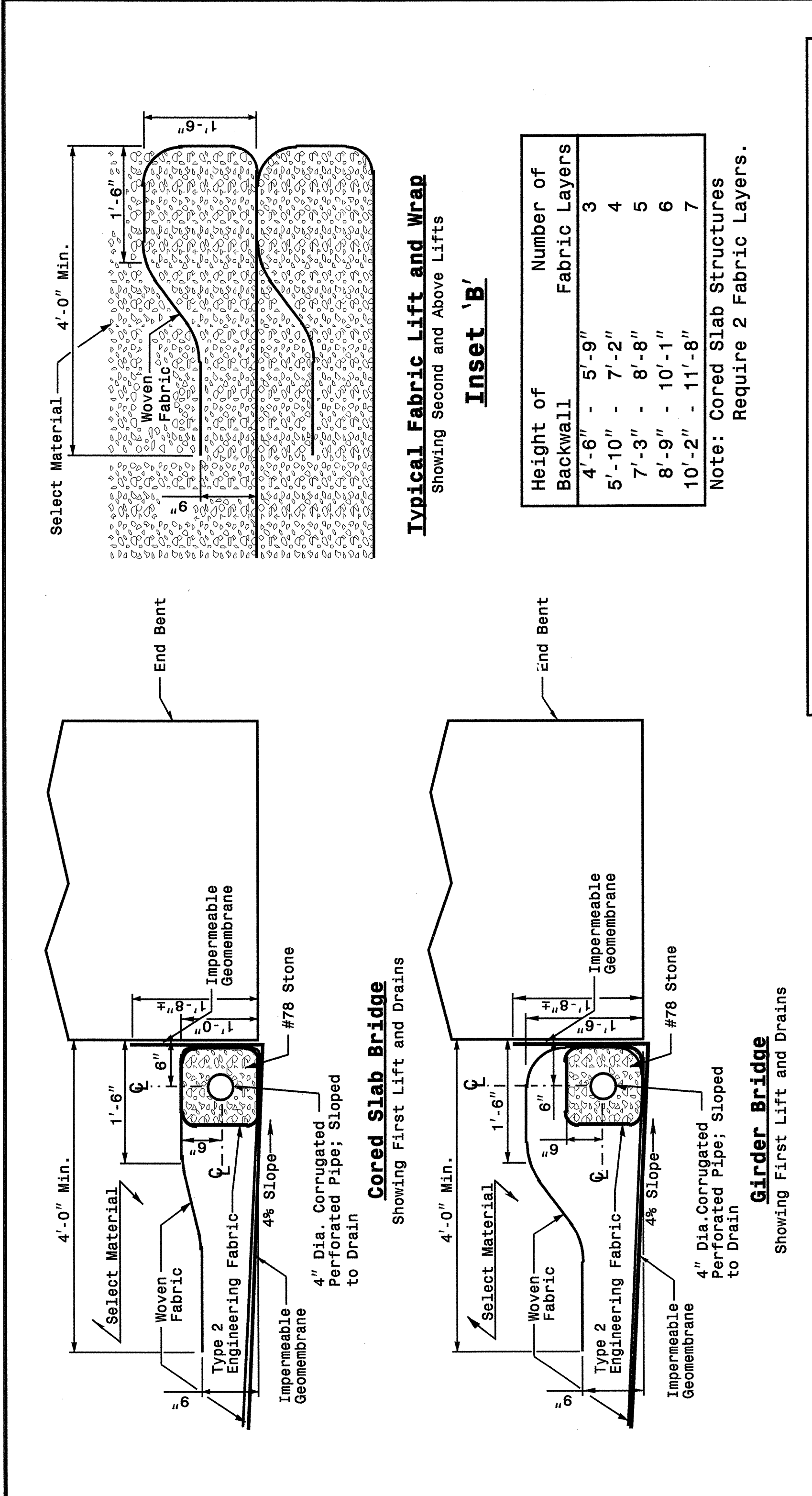
ENGLISH DETAIL DRAWING FOR
REINFORCED BRIDGE APPROACH FILLS
CORED SLAB BRIDGES

SHEET 3 OF 4
422D10

STATE OF
NORTH CAROLINA
DEPT. OF TRANSPORTATION
DIVISION OF HIGHWAYS
RALEIGH, N.C.

ENGLISH DETAIL DRAWING FOR
REINFORCED BRIDGE APPROACH FILLS
INSETS AND CHARTS

SHEET 4 OF 4
422D10



STATE OF
NORTH CAROLINA
DEPT. OF TRANSPORTATION
DIVISION OF HIGHWAYS
RALEIGH, N.C.

ENGLISH DETAIL DRAWING FOR
REINFORCED BRIDGE APPROACH FILLS
INSETS AND CHARTS

SHEET 4 OF 4
422D10

Typical Fabric Lift and Wrap
Showing Second and Above Lifts

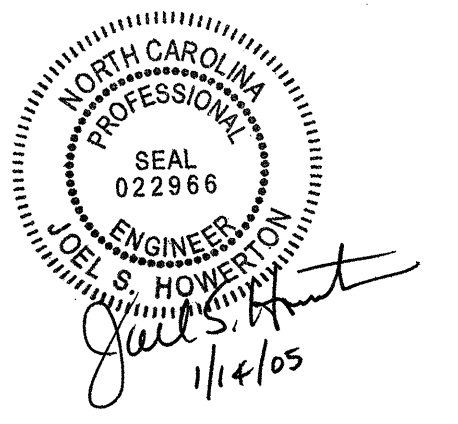
Inset 'B'

Height of Backwall	Number of Fabric Layers
4'-6" - 5'-9"	3
5'-10" - 7'-2"	4
7'-3" - 8'-8"	5
8'-9" - 10'-1"	6
10'-2" - 11'-8"	7

Note: Cored Slab Structures Require 2 Fabric Layers.

Inset 'A'

Length of Bridge End Bent Inside Wingwalls
If Bridge Skew is Less Than or Equal to 90°:
 $\frac{\text{Roadway Width} + 7'-0''}{\sin(\text{Bridge Skew Angle})} = \text{Dis. Between Wingwalls}$
If Bridge Skew is Greater Than 90°:
 $\frac{\text{Roadway Width} + 7'-0''}{\cos(\text{Bridge Skew Angle} - 90^\circ)} = \text{Dis. Between Wingwalls}$



PROJECT SERVICES UNIT
STANDARDS AND SPECIAL DESIGN
Office 919-250-4128 FAX 919-250-4119

SEE PLATE FOR TITLE

ORIGINAL BY: 2002 STANDARDS DATE: 01-15-02
MODIFIED BY: E.E. WARD DATE: 11-04-04
CHECKED BY: J.S. Howerton DATE: 11-12-04
FILE SPEC.: stds/02stdstodetails/english/422d10.dgn

05-NOV-2004 14:29 W:\Special Details\stds\stds\02\stds to Special Details\english\422d10\0422d10.dgn
ericward A1_05212260