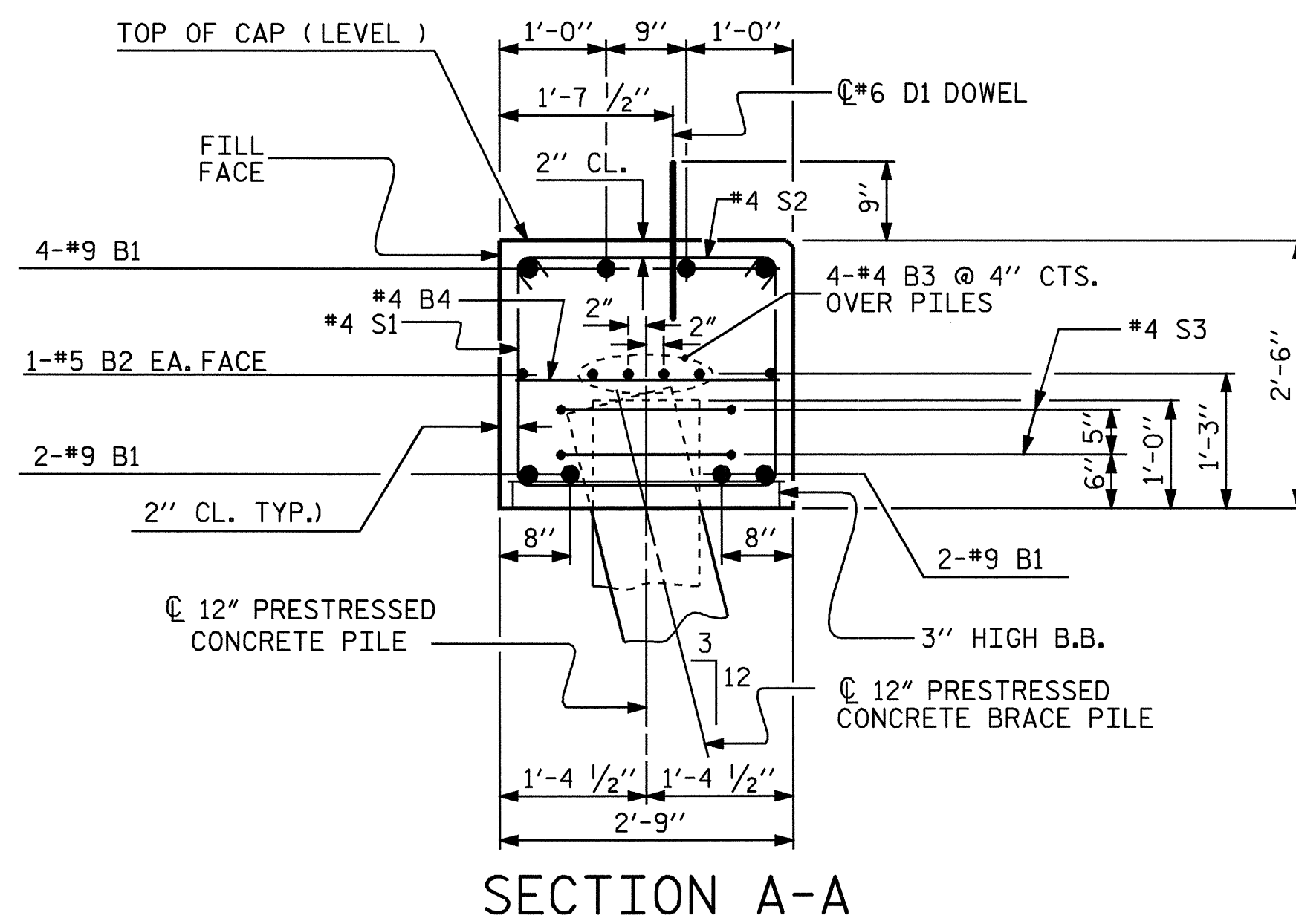
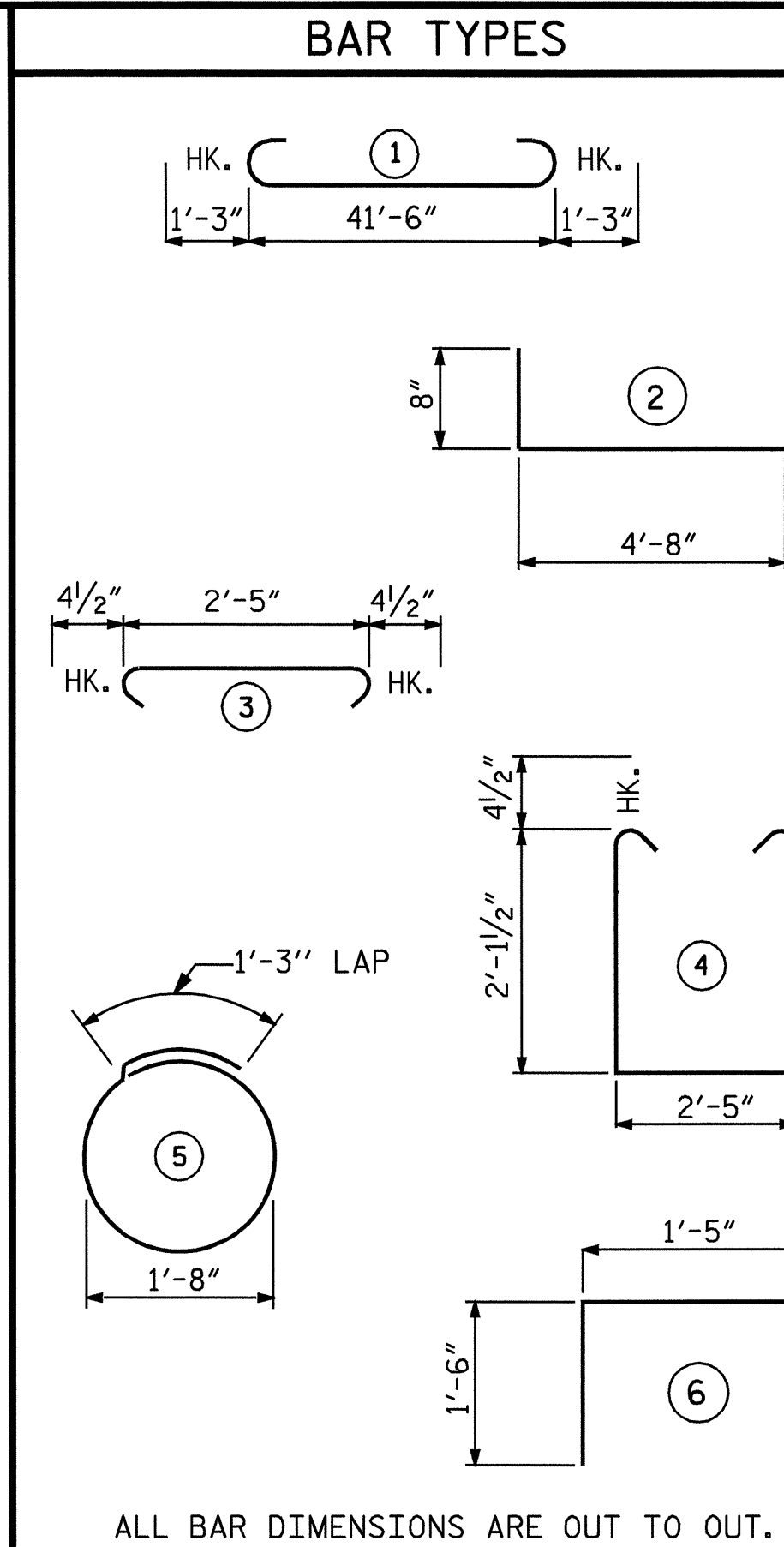


PLAN OF WING

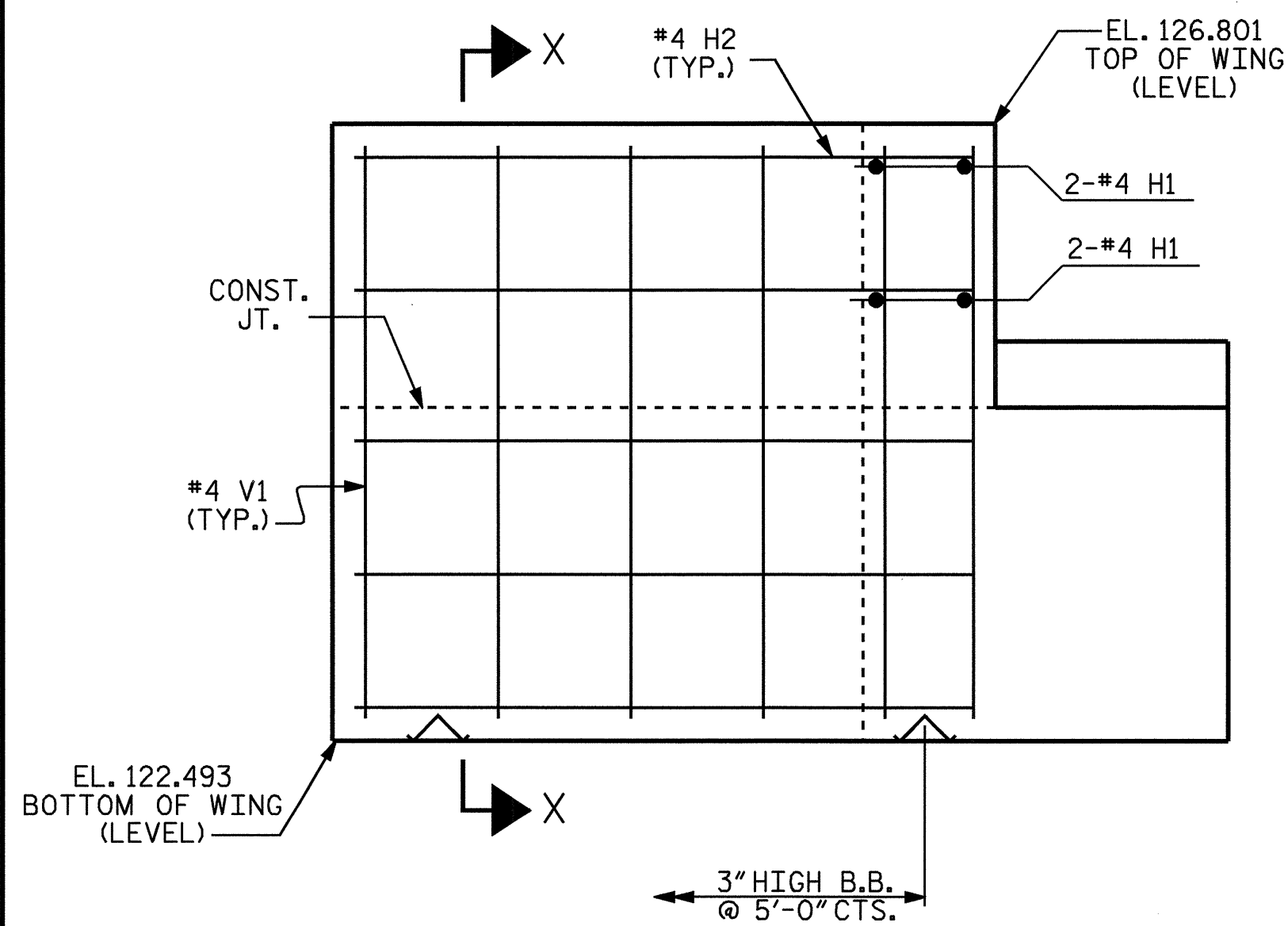


SECTION A-A

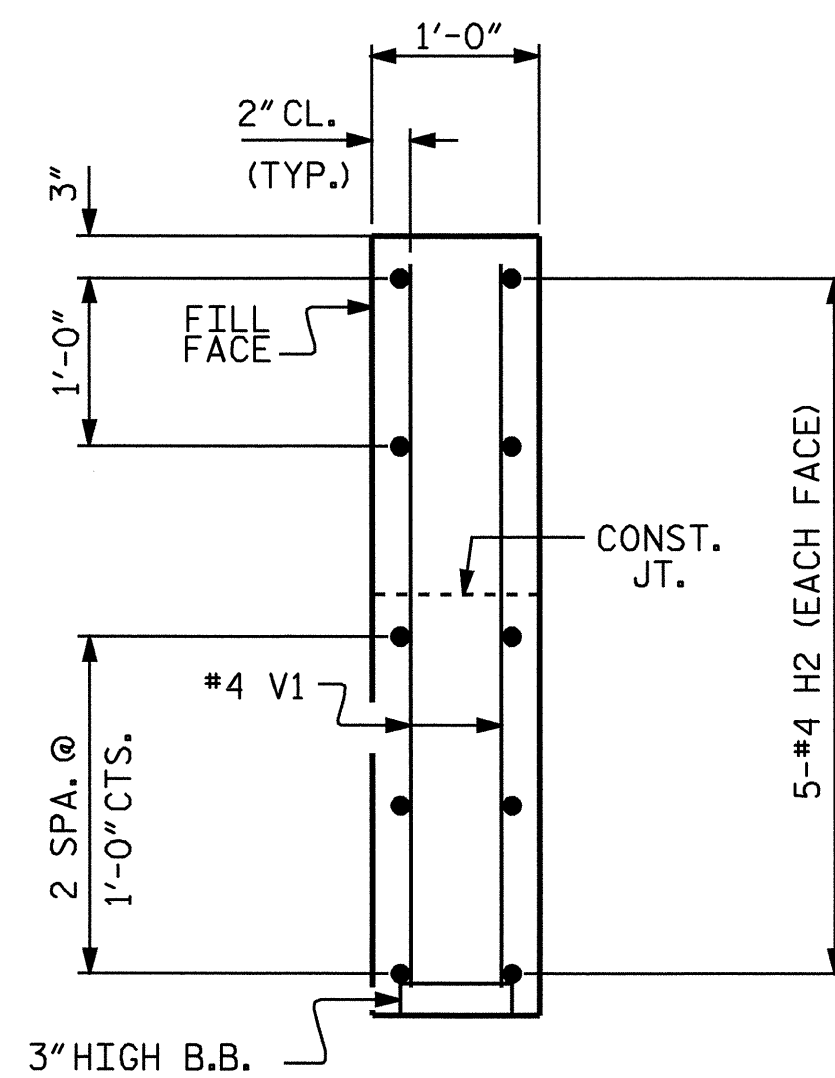


ALL BAR DIMENSIONS ARE OUT TO OUT.

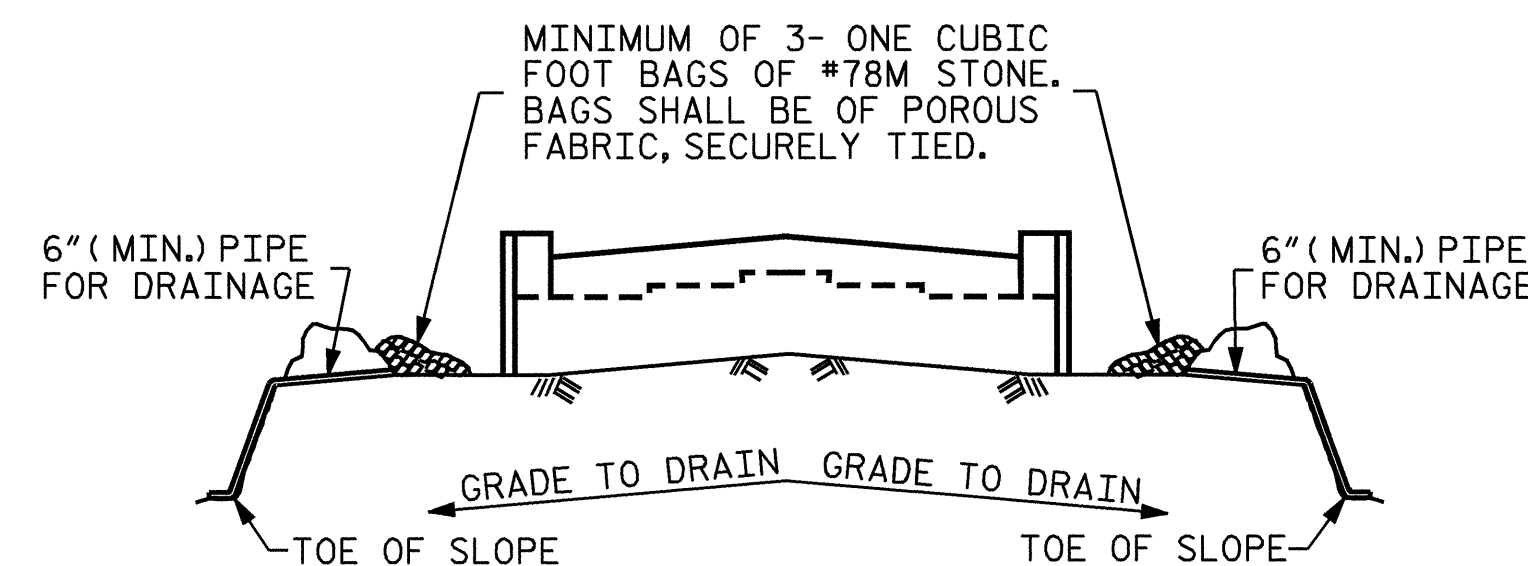
BILL OF MATERIAL					
END BENT 2					
BAR	NO.	SIZE	TYPE	LENGTH	WEIGHT
B1	8	#9	1	44'-0"	1197
B2	2	#5	STR	41'-8"	87
B3	8	#4	STR	22'-1"	118
B4	11	#4	STR	2'-5"	18
D1	24	#6	STR	1'-6"	54
H1	8	#4	STR	2'-6"	13
H2	20	#4	2	5'-4"	71
S1	37	#4	4	7'-5"	183
S2	37	#4	3	3'-2"	78
S3	16	#4	5	6'-6"	69
S4	4	#4	6	4'-5"	12
V1	32	#4	STR	3'-11"	84
REINFORCING STEEL				LBS	1984
CLASS 'A' CONCRETE					
POUR #1 CAP & WINGS				CU. YDS	11.1
POUR #2 WINGS				CU. YDS	0.9
POUR #3 LATERAL GUIDES				CU. YDS	0.1
TOTAL				CU. YDS	12.1
12" PRESTRESSED CONCRETE PILES					
NO 8				LIN. FT.	320



ELEVATION OF WING



SECTION X-X



BAGGED STONE AND PIPE SHALL BE PLACED IMMEDIATELY AFTER COMPLETION OF END BENT EXCAVATION. PIPE MAY BE EITHER CONCRETE, CORRUGATED STEEL, CORRUGATED ALUMINUM ALLOY, OR CORRUGATED PLASTIC. PERFORATED PIPE WILL NOT BE ALLOWED.

BAGGED STONE SHALL REMAIN IN PLACE UNTIL THE ENGINEER DIRECTS THAT IT BE REMOVED. THE CONTRACTOR SHALL REMOVE AND DISPOSE OF SILT ACCUMULATIONS AT BAGGED STONE WHEN SO DIRECTED BY THE ENGINEER. BAGS SHALL BE REMOVED AND REPLACED WHENEVER THE ENGINEER DETERMINES THAT THEY HAVE DETERIORATED AND LOST THEIR EFFECTIVENESS.

NO SEPARATE PAYMENT WILL BE MADE FOR THIS WORK AND THE ENTIRE COST OF THIS WORK SHALL BE INCLUDED IN THE UNIT CONTRACT PRICE BID FOR THE SEVERAL PAY ITEMS.

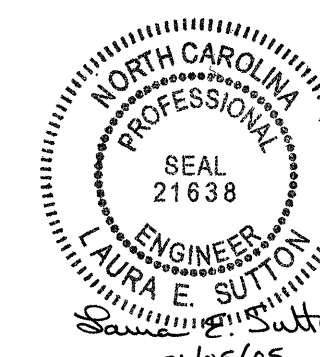
TEMPORARY DRAINAGE AT END BENT

PROJECT NO. B-4248
ROBESON COUNTY
 STATION: 16+67.50 -L-

SHEET 2 OF 2

STATE OF NORTH CAROLINA
 DEPARTMENT OF TRANSPORTATION
 RALEIGH

SUBSTRUCTURE
 END BENT 2



DRAWN BY: DJC/A.S. CALLAWAY DATE: 7-23-04
 CHECKED BY: L.E. SUTTON DATE: 11/30/04

22-DEC-2004 11:15
 W:\Squad\1\8.b4248\scallaway\B4248_sd.E*.01.dgn
 scallaway

REVISIONS						SHEET NO.
NO.	BY:	DATE:	NO.	BY:	DATE:	S-19
1			3			TOTAL SHEETS
2			4			25