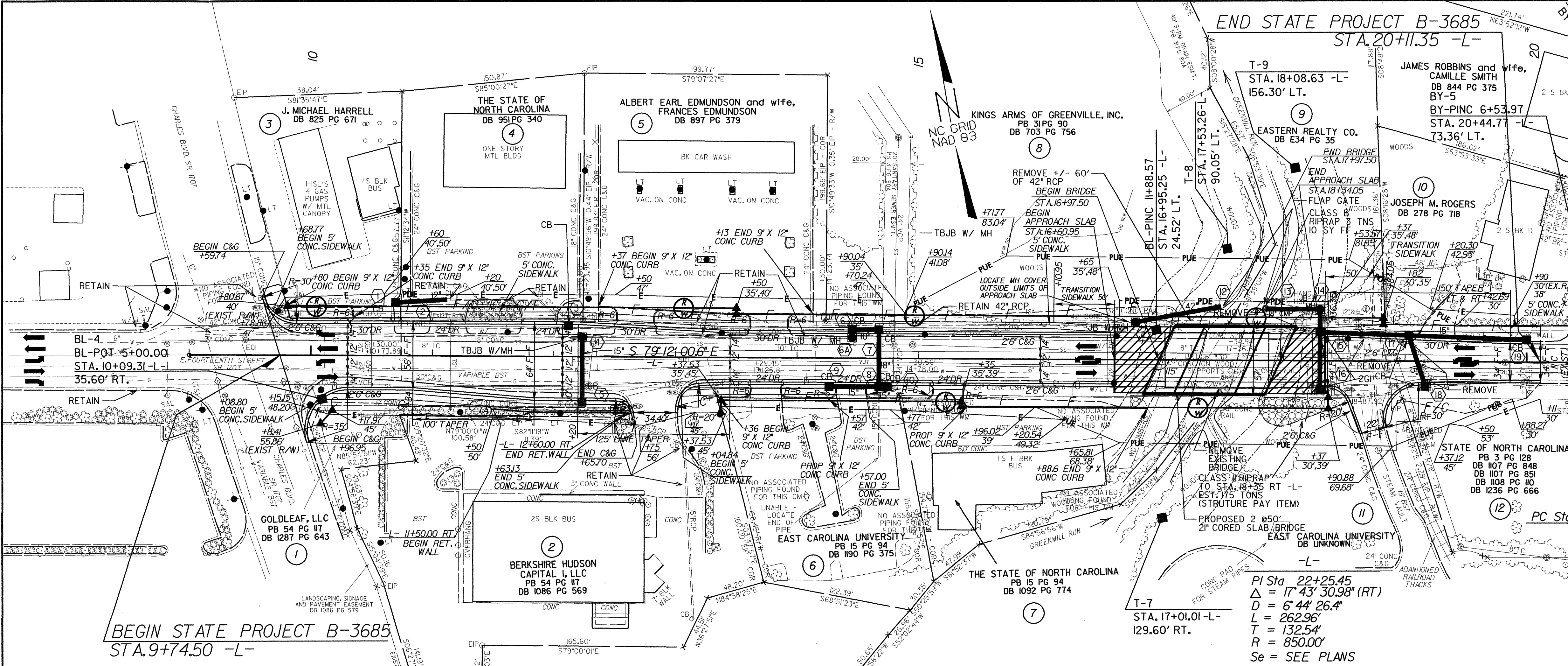
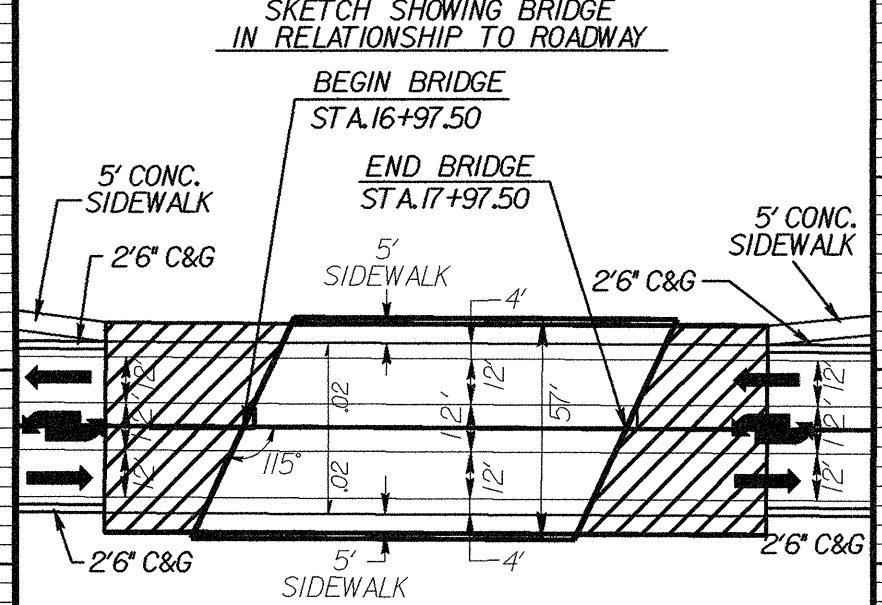
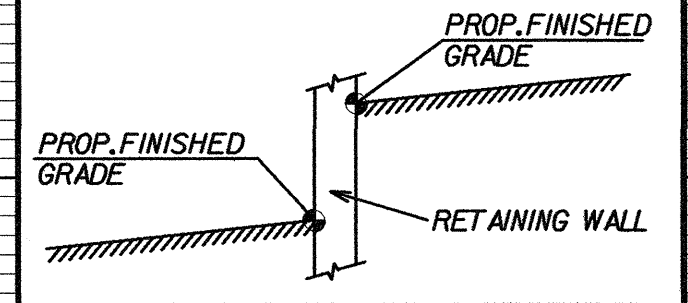


PROJECT REFERENCE NO. B-3685	SHEET NO. 4
RW SHEET NO.	
ROADWAY DESIGN ENGINEER WANG ENGINEERING	HYDRAULICS ENGINEER SUNGATE DESIGN GROUP



**DATUM DESCRIPTION**

THE LOCALIZED COORDINATE SYSTEM DEVELOPED FOR THIS PROJECT IS BASED ON THE STATE PLANE COORDINATES ESTABLISHED BY NCGS FOR MONUMENT "FICKLEN" WITH NAD 83 STATE PLANE GRID COORDINATES OF NORTHING: 676571.7734 FT EASTING: 2486874.4617 FT THE AVERAGE COMBINED GRID FACTOR USED ON THIS PROJECT (GROUND TO GRID) IS: 0.999893267 THE N.C. LAMBERT GRID BEARING AND LOCALIZED HORIZONTAL GROUND DISTANCE FROM "FICKLEN" TO -L- STATION 9+74.50 IS N 67° 53' 32.23" W 2781.9366 FT ALL LINEAR DIMENSIONS ARE LOCALIZED HORIZONTAL DISTANCES

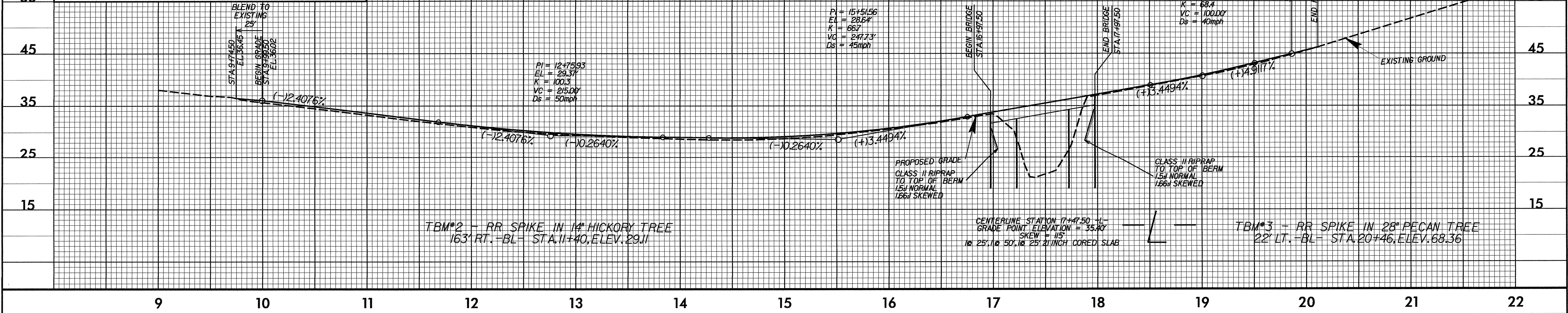


**BRIDGE HYDRAULIC DATA**

DESIGN DISCHARGE	= 4470 CFS
DESIGN FREQUENCY	= 50 YRS
DESIGN HW ELEVATION	= 33.98 FT
BASE DISCHARGE	= 4930 CFS
BASE FREQUENCY	= 100 YRS
BASE HW ELEVATION	= 34.31 FT
OVERTOPPING DISCHARGE	= +/- 650 CFS
OVERTOPPING FREQUENCY	= -10 YRS
OVERTOPPING ELEVATION	= 28.6 FT

DATE OF SURVEY = 10/19/01  
W.S. ELEVATION AT DATE OF SURVEY = 22.26 FT

SEE STRUCTURE PLANS S- THRU S-



TBM#2 - RR SPIKE IN 14" HICKORY TREE  
163' RT. -BL- STA. 11+40, ELEV. 29.11

CENTERLINE STATION 17+47.50 -L-  
GRADE POINT ELEVATION = 35.40'  
SKW = 15'  
18 25" X 18 50" X 25" 2" INCH CORED SLAB

TBM#3 - RR SPIKE IN 28" PECAN TREE  
22' LT. -BL- STA. 20+46, ELEV. 68.36