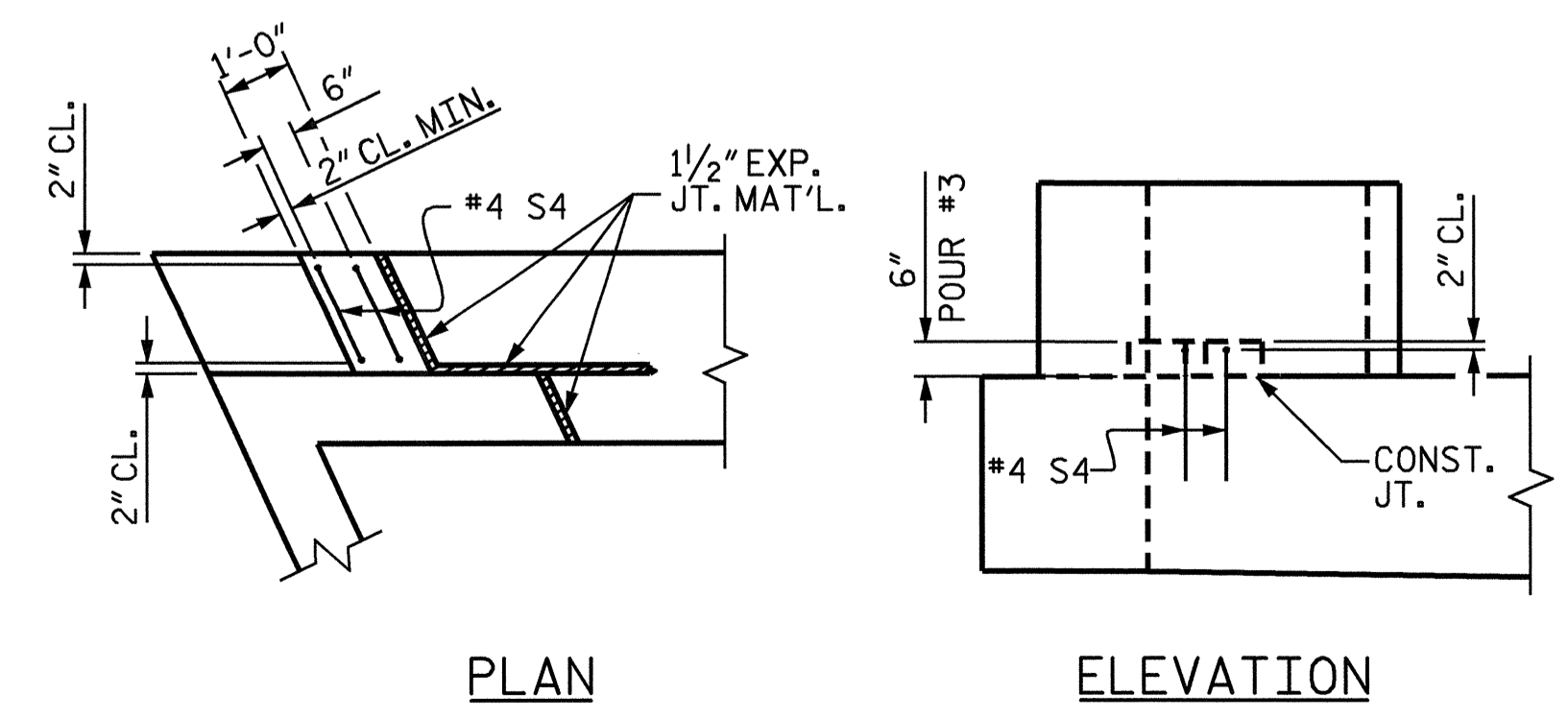


TOP OF PILE ELEVATIONS

PILE	ELEV
1	29.723
2	29.627
3	29.530
4	29.434
5	29.338
6	29.241
7	29.145
8	29.048
9	28.952
10	28.855
11	28.759



LATERAL GUIDE DETAILS

NOTES:

STIRRUPS IN CAP MAY BE SHIFTED AS NECESSARY TO CLEAR DOWELS.

THE CONTRACTOR SHALL PROVIDE FOR INSTALLATION OF THE 4" DIAMETER DRAIN PIPE THROUGH THE WING WALL AS REQUIRED FOR REINFORCED BRIDGE APPROACH FILLS. SEE THE ROADWAY PLANS. REINFORCING STEEL IN THE WING WALL MAY BE SHIFTED AS NECESSARY TO CLEAR THE DRAIN PIPE.

THE LATERAL GUIDE AT EACH END OF THE CAP IS NOT TO BE POURED UNTIL AFTER CORED SLAB UNITS ARE IN PLACE.

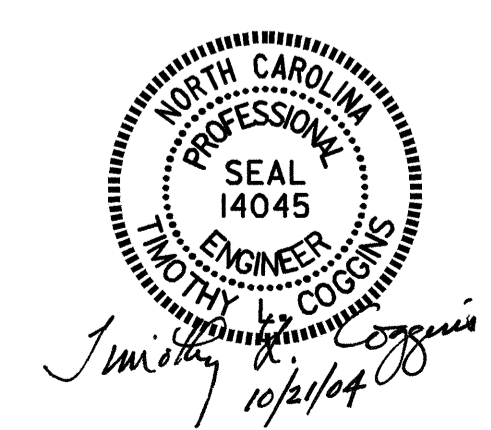
PROJECT NO. B-3685
 PITT COUNTY
 STATION: 17+47.50 -L-

SHEET 1 OF 3

STATE OF NORTH CAROLINA
 DEPARTMENT OF TRANSPORTATION
 RALEIGH

SUBSTRUCTURE
 END BENT #1

REVISIONS						SHEET NO. S-13
NO.	BY:	DATE:	NO.	BY:	DATE:	
1			3			TOTAL SHEETS 27
2			4			



DRAWN BY: PEGGY ADKINS DATE: 4-04
 CHECKED BY: T. AVERETTE DATE: 5-04