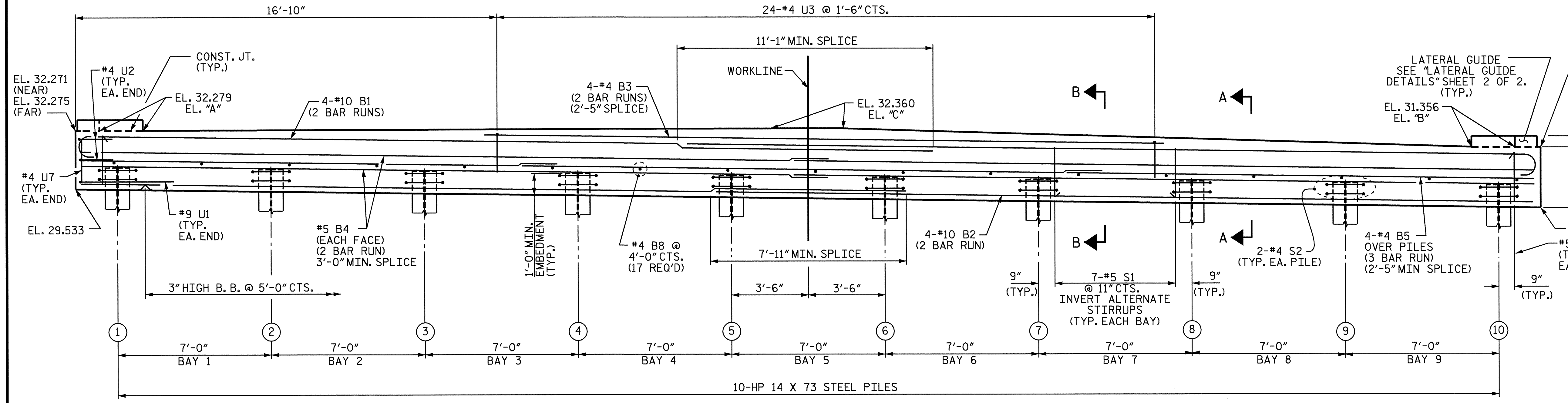


PLAN

NOTES

STIRRUPS IN CAP MAY BE SHIFTED AS NECESSARY TO CLEAR DOWELS.  
 THE LATERAL GUIDE AT EACH END OF THE CAP IS NOT TO BE POURED UNTIL AFTER CORED SLAB UNITS ARE IN PLACE.  
 THE STEEL PILES SHALL BE GALVANIZED IN ACCORDANCE WITH SECTION 1076 OF THE STANDARD SPECIFICATIONS. FOR GALVANIZING STEEL PILES, SEE SPECIAL PROVISIONS.



ELEVATION

TOP OF PILE ELEVATIONS	
1	30.513
2	30.411
3	30.309
4	30.207
5	30.105
6	30.003
7	29.901
8	29.799
9	29.697
10	29.595

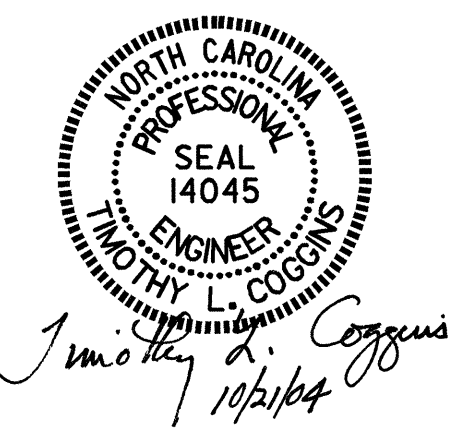
PROJECT NO. B-3685  
 PITT COUNTY  
 STATION: 17+47.50 -L-

SHEET 1 OF 2

STATE OF NORTH CAROLINA  
 DEPARTMENT OF TRANSPORTATION  
 RALEIGH

SUBSTRUCTURE  
 BENT #1

REVISIONS						SHEET NO.	
NO.	BY:	DATE:	NO.	BY:	DATE:	S-16	
1			3			TOTAL SHEETS 27	
2			4				



DRAWN BY: PEGGY ADKINS DATE: 7/04  
 CHECKED BY: T.L. AVERETTE DATE: 8-04