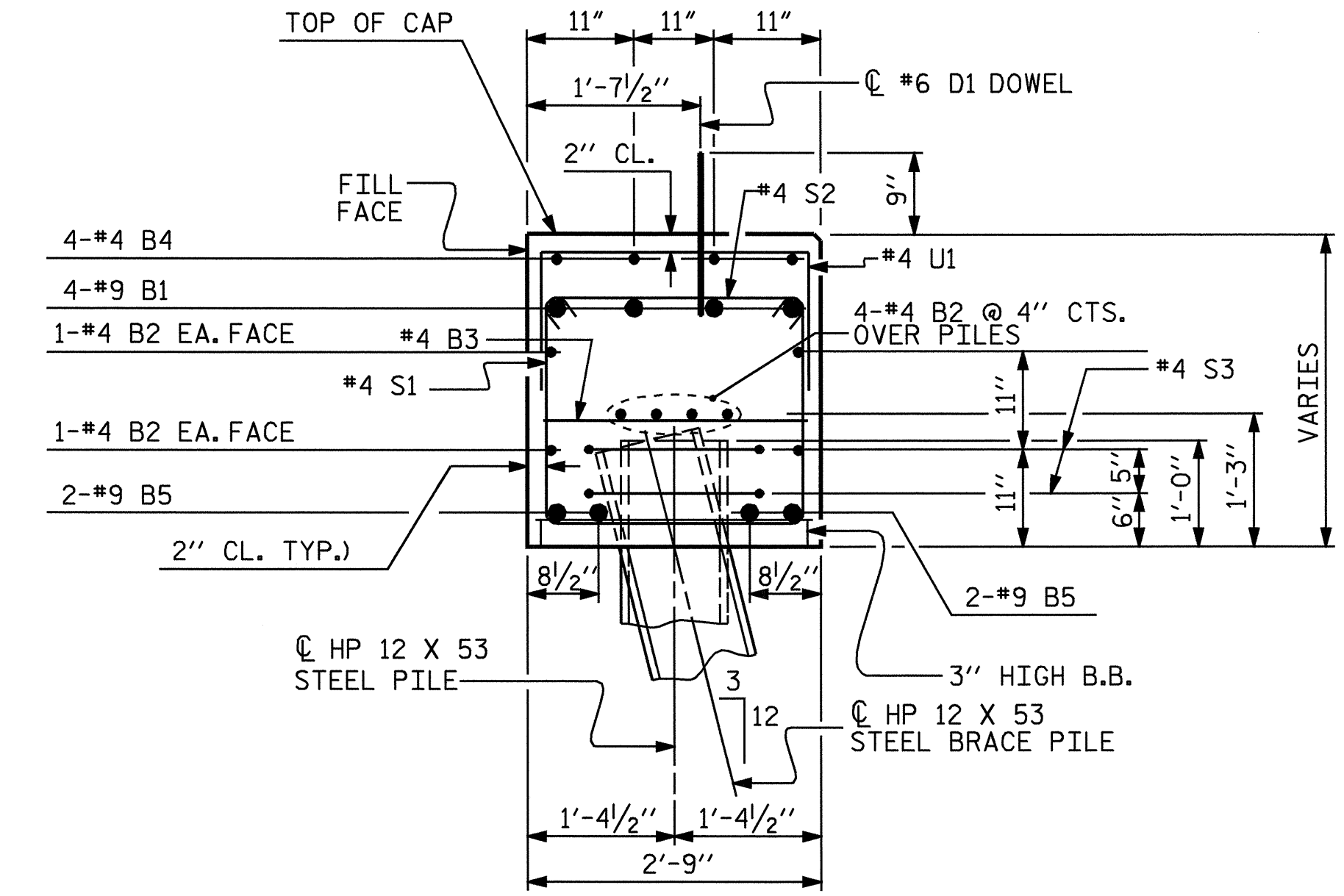
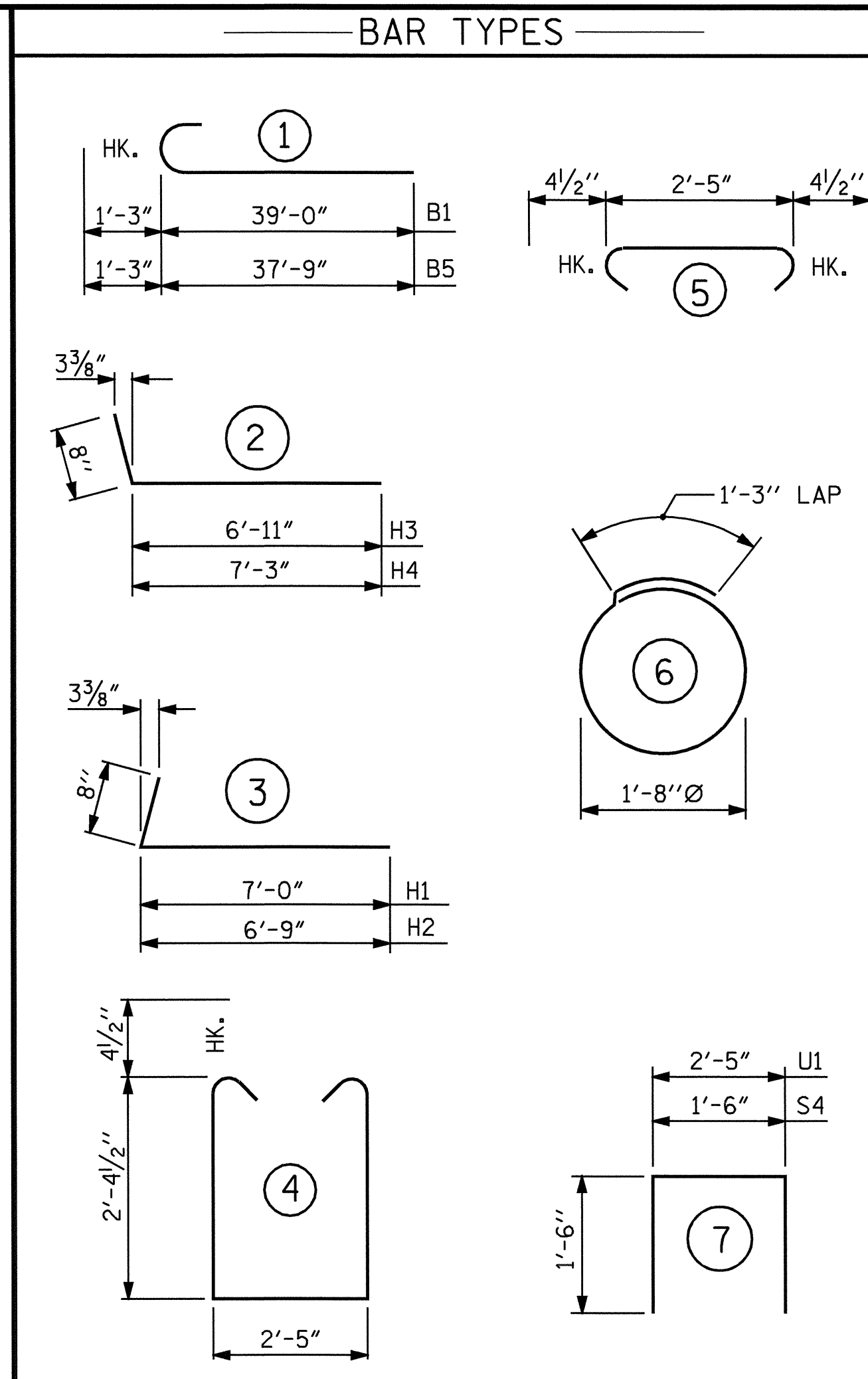


SECTION A-A

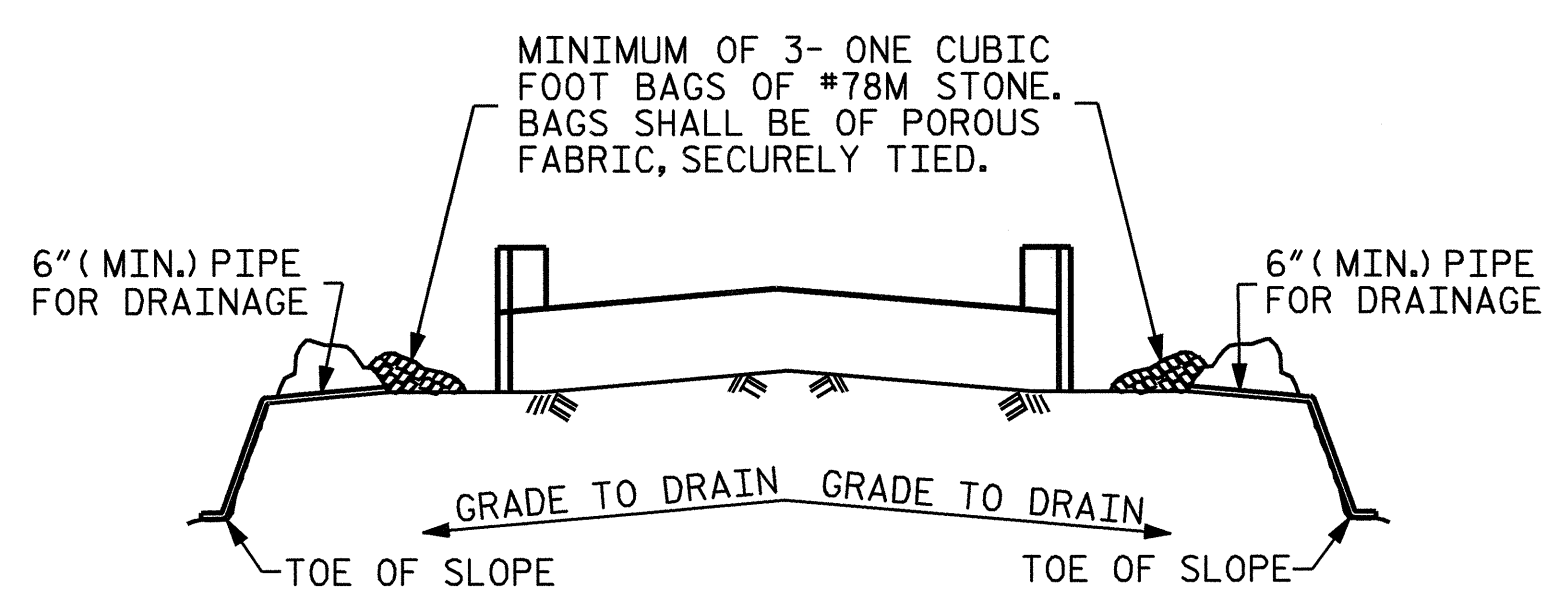


SECTION B-B



ALL BAR DIMENSIONS ARE OUT TO OUT.

BILL OF MATERIAL					
END BENT #2					
BAR	NO.	SIZE	TYPE	LENGTH	WEIGHT
B1	8	9	1	40'-3"	1095
B2	24	4	STR	24'-9"	397
B3	17	4	STR	2'-5"	27
B4	8	4	STR	22'-1"	118
B5	8	9	1	39'-0"	1061
D1	38	6	STR	1'-6"	86
H1	7	4	3	7'-8"	36
H2	7	4	3	7'-5"	35
H3	7	4	2	7'-7"	35
H4	7	4	2	7'-11"	37
K1	16	4	STR	4'-4"	46
S1	62	4	4	7'-11"	328
S2	62	4	5	3'-2"	131
S3	22	4	6	6'-6"	96
S4	4	4	7	4'-6"	12
U1	28	4	7	5'-5"	101
V1	24	4	STR	5'-6"	88
V2	26	4	STR	5'-4"	93
REINFORCING STEEL					LBS 3822
CLASS "A" CONCRETE BREAKDOWN					
POUR #1				CAP & LOWER PART OF WINGS	23.0 YD3
POUR #2				UPPER PART OF WINGS	2.4 YD3
POUR #3				LATERAL GUIDES	0.1 YD3
CLASS "A" CONCRETE TOTAL				25.5 YD3	
HP 12 x 53 STEEL PILES					
NO. 11		LIN. FT. 165			



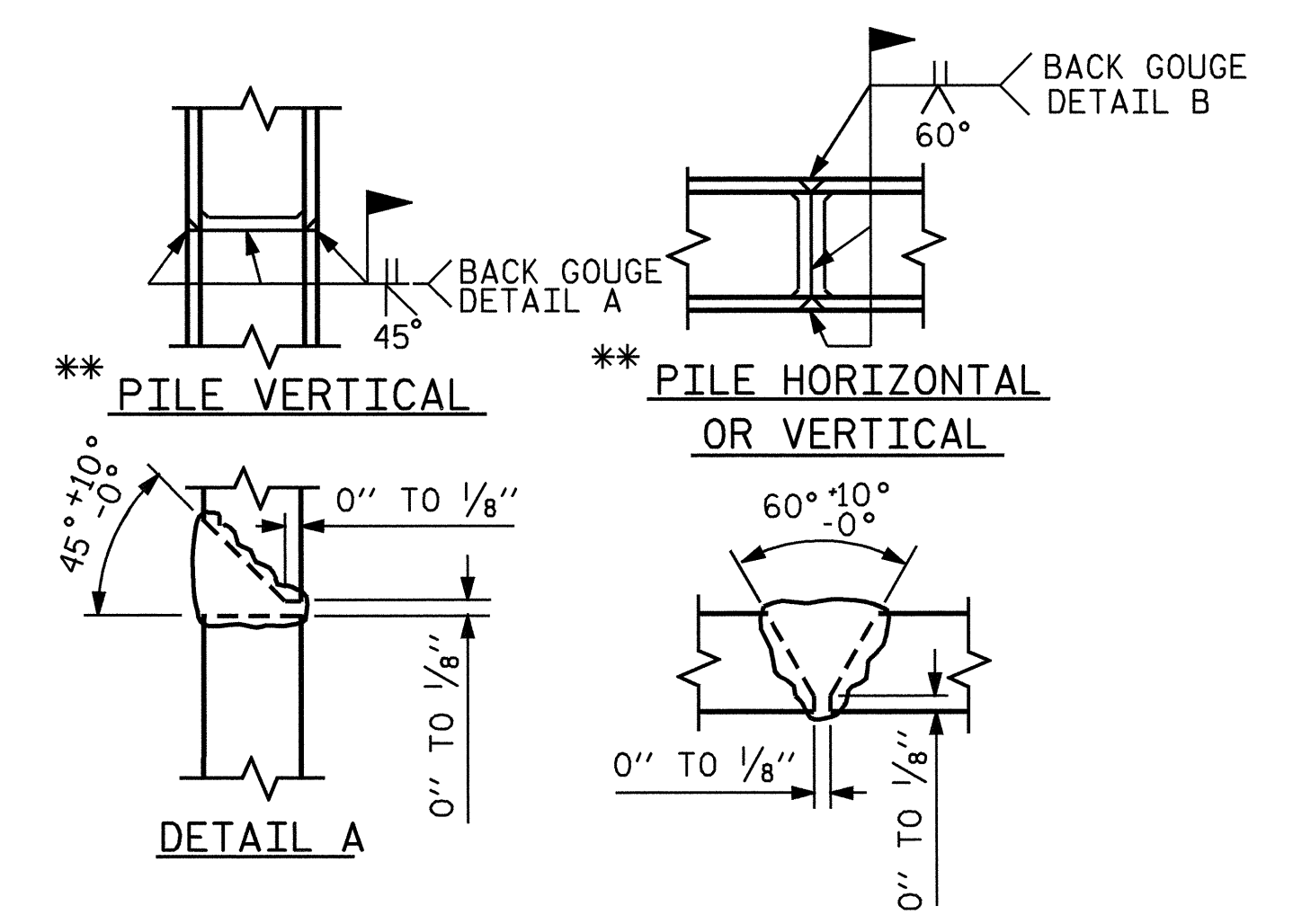
MINIMUM OF 3- ONE CUBIC FOOT BAGS OF #78M STONE. BAGS SHALL BE OF POROUS FABRIC, SECURELY TIED.

BAGGED STONE AND PIPE SHALL BE PLACED IMMEDIATELY AFTER COMPLETION OF END BENT EXCAVATION. PIPE MAY BE EITHER CONCRETE, CORRUGATED STEEL, CORRUGATED ALUMINUM ALLOY, OR CORRUGATED PLASTIC. PERFORATED PIPE WILL NOT BE ALLOWED.

BAGGED STONE SHALL REMAIN IN PLACE UNTIL THE ENGINEER DIRECTS THAT IT BE REMOVED. THE CONTRACTOR SHALL REMOVE AND DISPOSE OF SILT ACCUMULATIONS AT BAGGED STONE WHEN SO DIRECTED BY THE ENGINEER. BAGS SHALL BE REMOVED AND REPLACED WHENEVER THE ENGINEER DETERMINES THAT THEY HAVE DETERIORATED AND LOST THEIR EFFECTIVENESS.

NO SEPARATE PAYMENT WILL BE MADE FOR THIS WORK AND THE ENTIRE COST OF THIS WORK SHALL BE INCLUDED IN THE UNIT CONTRACT PRICE BID FOR THE SEVERAL PAY ITEMS.

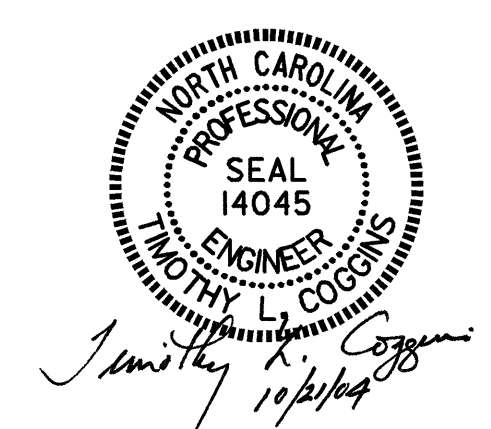
TEMPORARY DRAINAGE AT END BENT



PILE SPLICE DETAILS

PROJECT NO. B-3685
PITT COUNTY
 STATION: 17+47.50 -L-
 SHEET 3 OF 3

STATE OF NORTH CAROLINA
 DEPARTMENT OF TRANSPORTATION
 RALEIGH
 SUBSTRUCTURE
 END BENT #2



REVISIONS					SHEET NO.
NO.	BY:	DATE:	NO.	BY:	DATE:
1			3		
2			4		

DRAWN BY: PEGGY ADKINS DATE: 4-04
 CHECKED BY: T. AVERETTE DATE: 5-04