

SOIL PROFILE ALONG SR 1703 (-L-) OVER GREEN MILL RUN

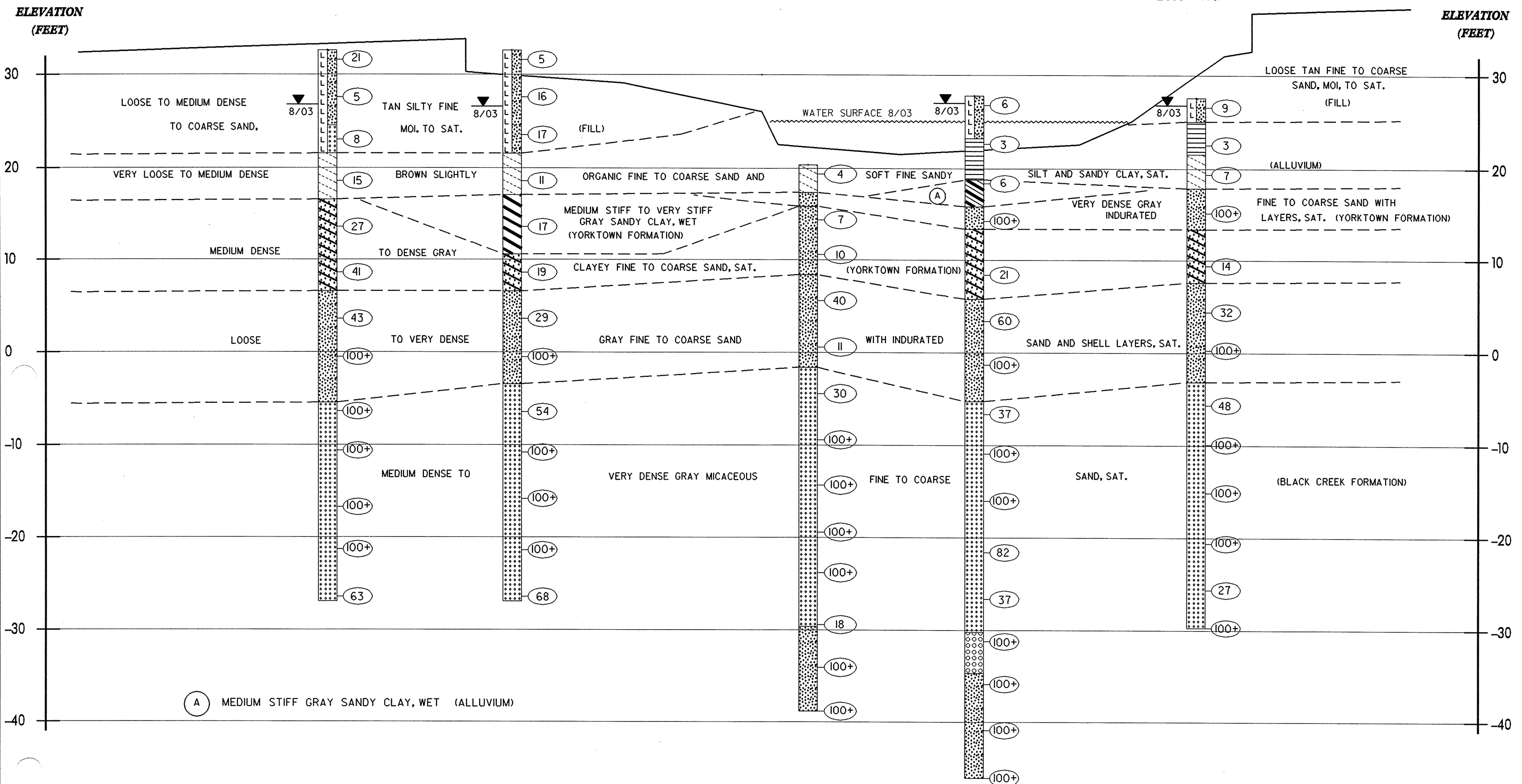
EBI-B
(33.0' RT.)

BORING I
(32.0' RT.)

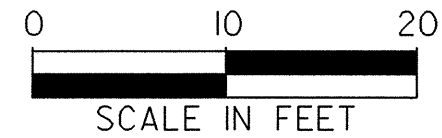
BI-B
(16.0' RT.)

BORING 2
(31.0' RT.)

EB2-B
(28.0' RT.)



(A) MEDIUM STIFF GRAY SANDY CLAY, WET (ALLUVIUM)



17+00

17+50

18+00