

PROJECT REFERENCE NO.	SHEET NO.
<b>B-3682 &amp; W-3413</b>	<b>UC-9</b>
DESIGNED BY: <b>VM</b>	
DRAWN BY: <b>VM</b>	
CHECKED BY: <b>GYS</b>	
APPROVED BY: <b>GYS</b>	
REVISED:	
NORTH CAROLINA DEPARTMENT OF TRANSPORTATION	
PROJECT SERVICES UNIT PHONE: (919) 250-4128 FAX: (919) 250-4119	
UTILITY CONSTRUCTION PLANS ONLY	

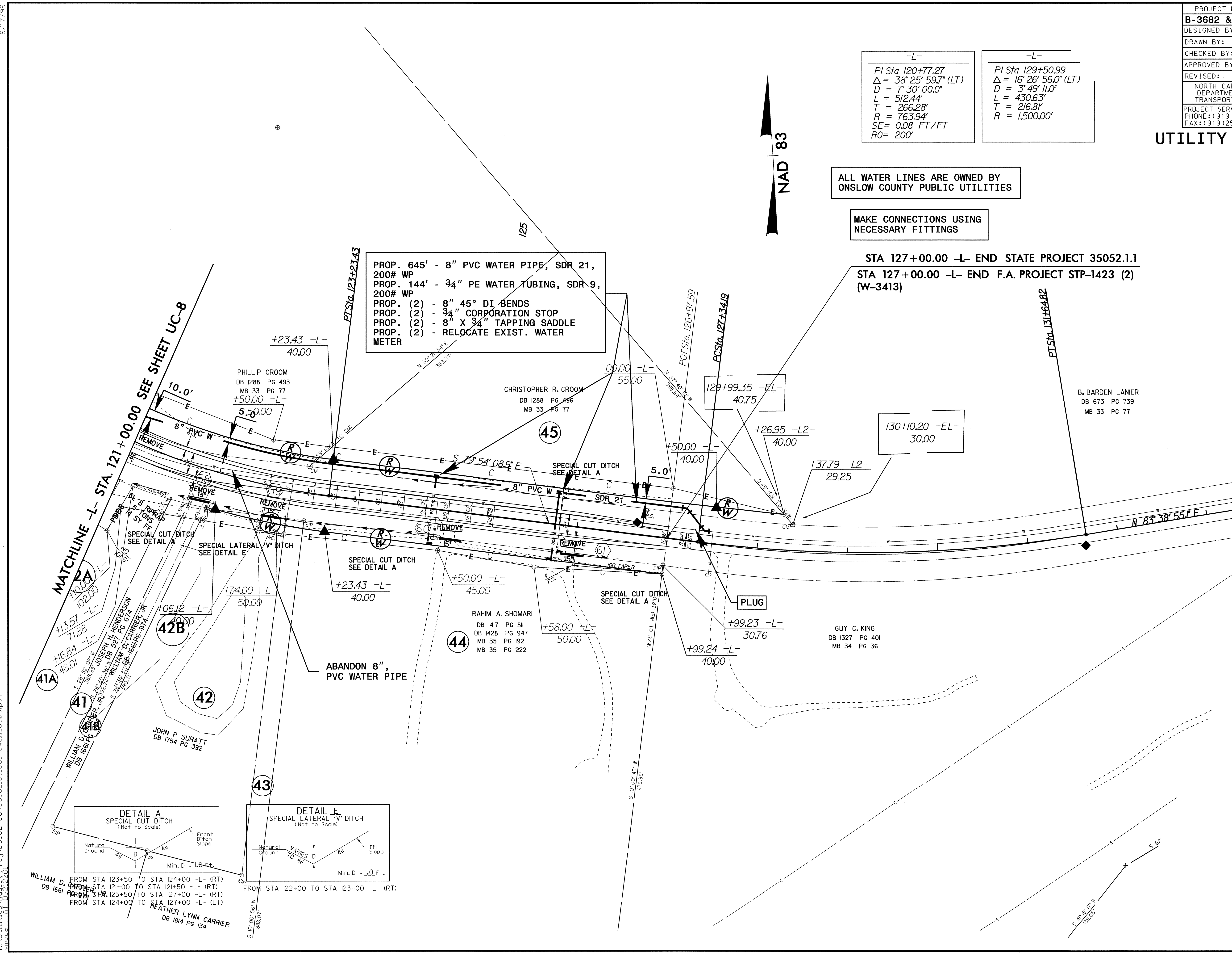
-L-	-L-
PI Sta 120+77.27 Δ = 38° 25' 59.7" (LT) D = 7' 30' 00.0" L = 512.44' T = 266.28' R = 763.94' SE = 0.08 FT/FT RO = 200'	PI Sta 129+50.99 Δ = 16° 26' 56.0" (LT) D = 3' 49' 11.0" L = 430.63' T = 216.81' R = 1,500.00'

ALL WATER LINES ARE OWNED BY  
ONSLOW COUNTY PUBLIC UTILITIES

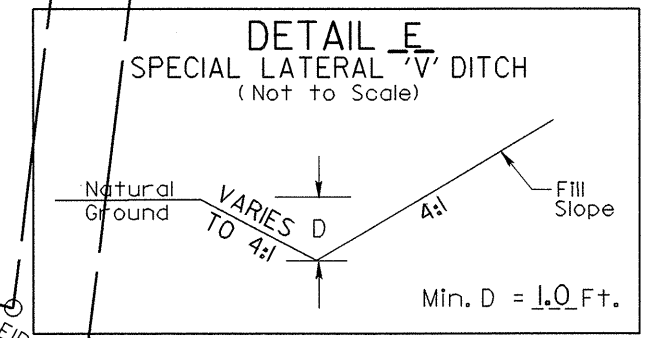
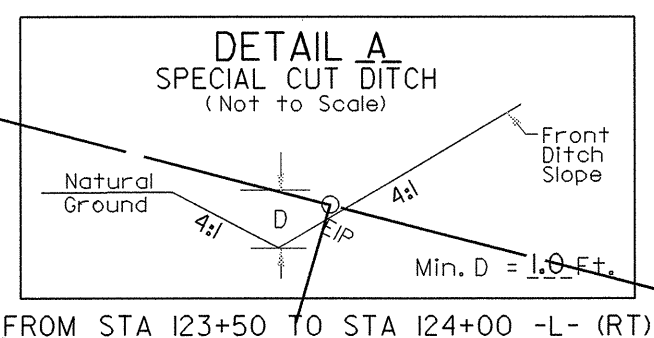
MAKE CONNECTIONS USING  
NECESSARY FITTINGS

STA 127+00.00 -L- END STATE PROJECT 35052.1.1  
STA 127+00.00 -L- END F.A. PROJECT STP-1423 (2)  
(W-3413)

PROP. 645' - 8" PVC WATER PIPE, SDR 21,  
200# WP  
PROP. 144' - 3/4" PE WATER TUBING, SDR 9,  
200# WP  
PROP. (2) - 8" 45° DI BENDS  
PROP. (2) - 3/4" CORPORATION STOP  
PROP. (2) - 8" X 3/4" TAPPING SADDLE  
PROP. (2) - RELOCATE EXIST. WATER  
METER



MATCHLINE -L- STA. 121+00.00 SEE SHEET UC-8



WILLIAM D. CARRIER DB 1661 PG 194  
FROM STA 123+50 TO STA 124+00 -L- (RT)  
FROM STA 124+00 TO STA 121+50 -L- (RT)  
FROM STA 125+50 TO STA 127+00 -L- (RT)  
FROM STA 124+00 TO STA 127+00 -L- (LT)

HEATHER LYNN CARRIER DB 1814 PG 134  
FROM STA 122+00 TO STA 123+00 -L- (RT)