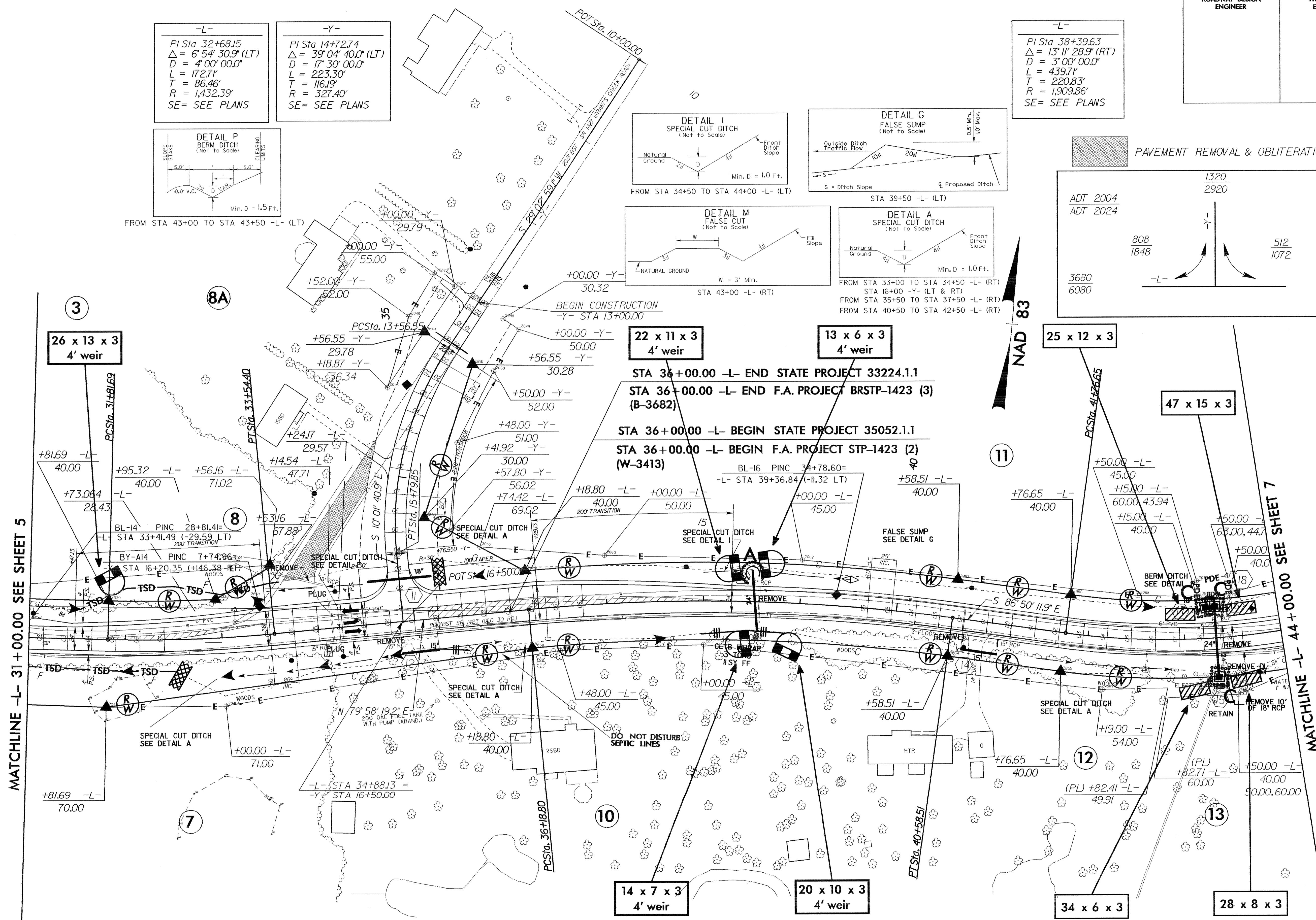
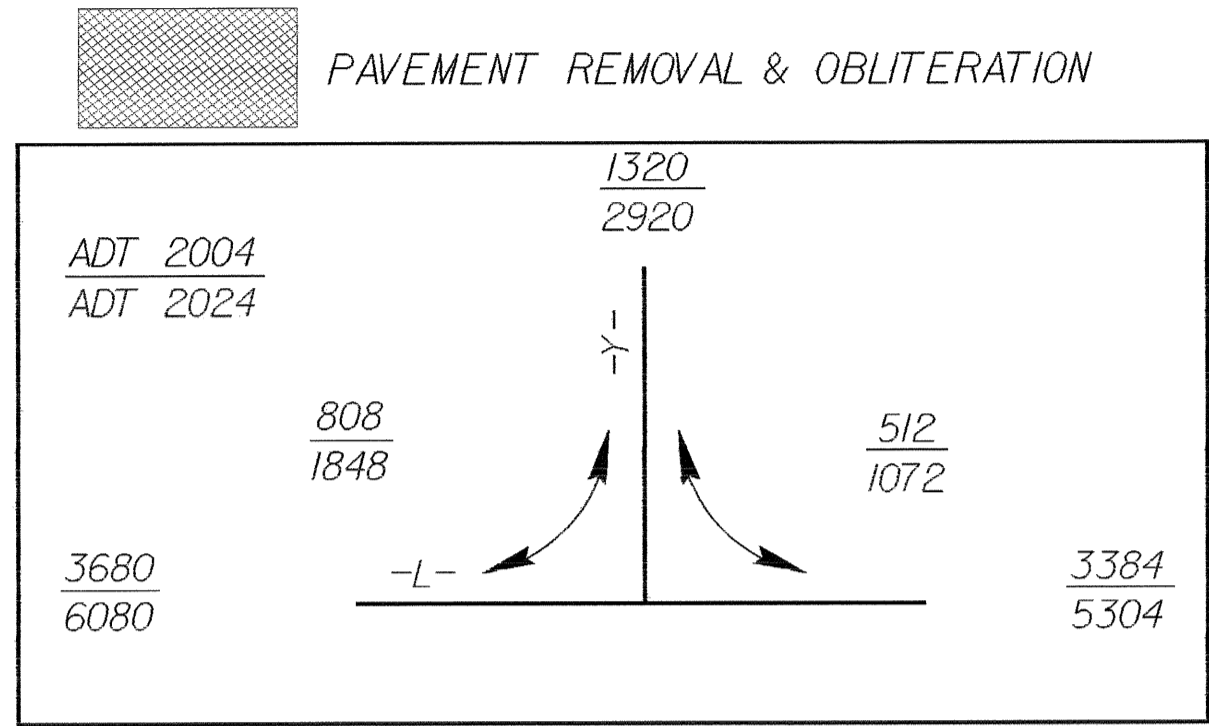
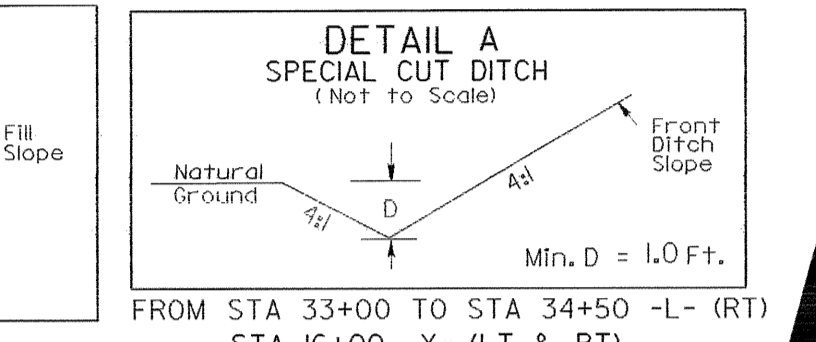
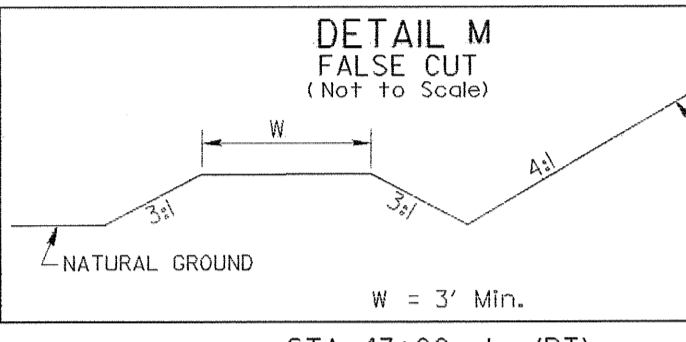
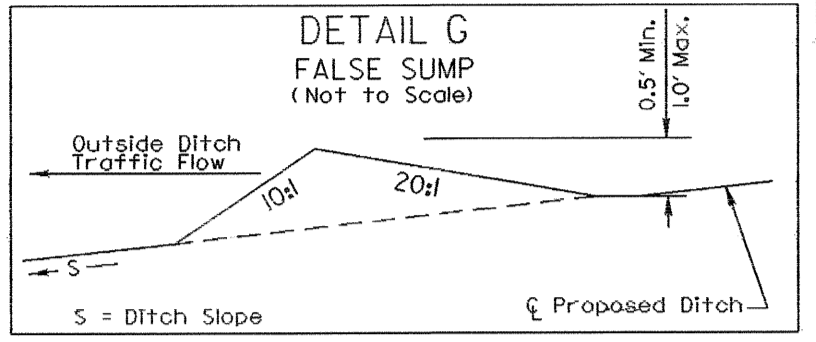
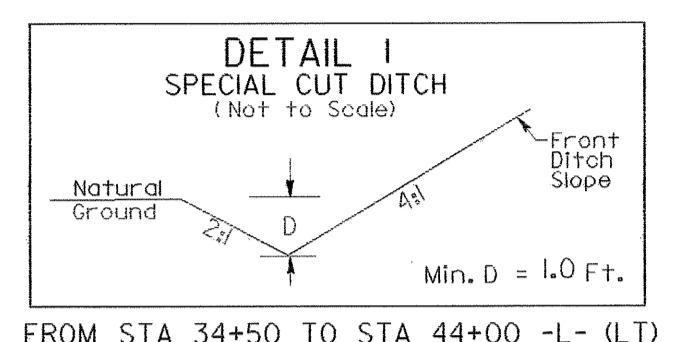
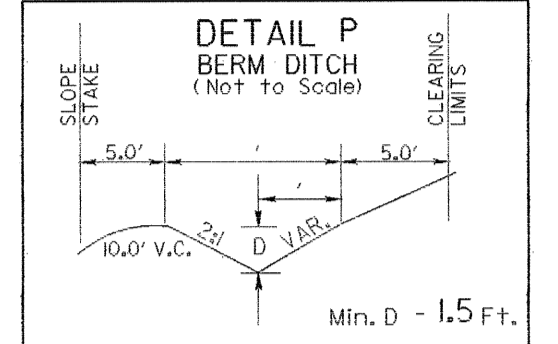


PROJECT REFERENCE NO.	SHEET NO.
B-3682 & W-3413	EC-13/CONST.6
RW SHEET NO.	
ROADWAY DESIGN ENGINEER	HYDRAULICS ENGINEER

-L-
 PI Sta 32+68.15
 $\Delta = 6^\circ 54' 30.9" (LT)$
 $D = 4' 00" 00.0"$
 $L = 172.71'$
 $T = 86.46'$
 $R = 1,432.39'$
 SE= SEE PLANS

-Y-
 PI Sta 14+72.74
 $\Delta = 39^\circ 04' 40.0" (LT)$
 $D = 17' 30" 00.0"$
 $L = 223.30'$
 $T = 116.19'$
 $R = 327.40'$
 SE= SEE PLANS

-L-
 PI Sta 38+39.63
 $\Delta = 13^\circ 11' 28.9" (RT)$
 $D = 3' 00" 00.0"$
 $L = 439.71'$
 $T = 220.83'$
 $R = 1,909.86'$
 SE= SEE PLANS



MATCHLINE -L- 31+00.00 SEE SHEET 5

MATCHLINE -L- 44+00.00 SEE SHEET 7

See sheet 12, 13 for -L- Profile
 See sheet 16, for -Y- Profile

8/17/99
 10-FEB-2005 08:42
 d:\re_vtip\proj\lb3682\proj\lb3682\05.pnt
 lbaodwin AT HENV21E00