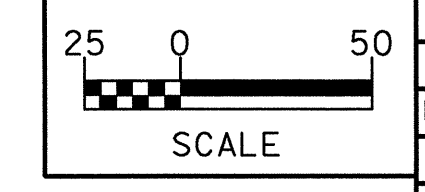


ALL SEWER FORCE MAINS OWNED BY NEW HANOVER COUNTY



UTILITY CONSTRUCTION

FINAL DRAWINGS

STA. 14+00.00 -L-
BEGIN STATE PROJECT B-3496

STA. 22+00.00 -L- END STATE PROJECT B-3496

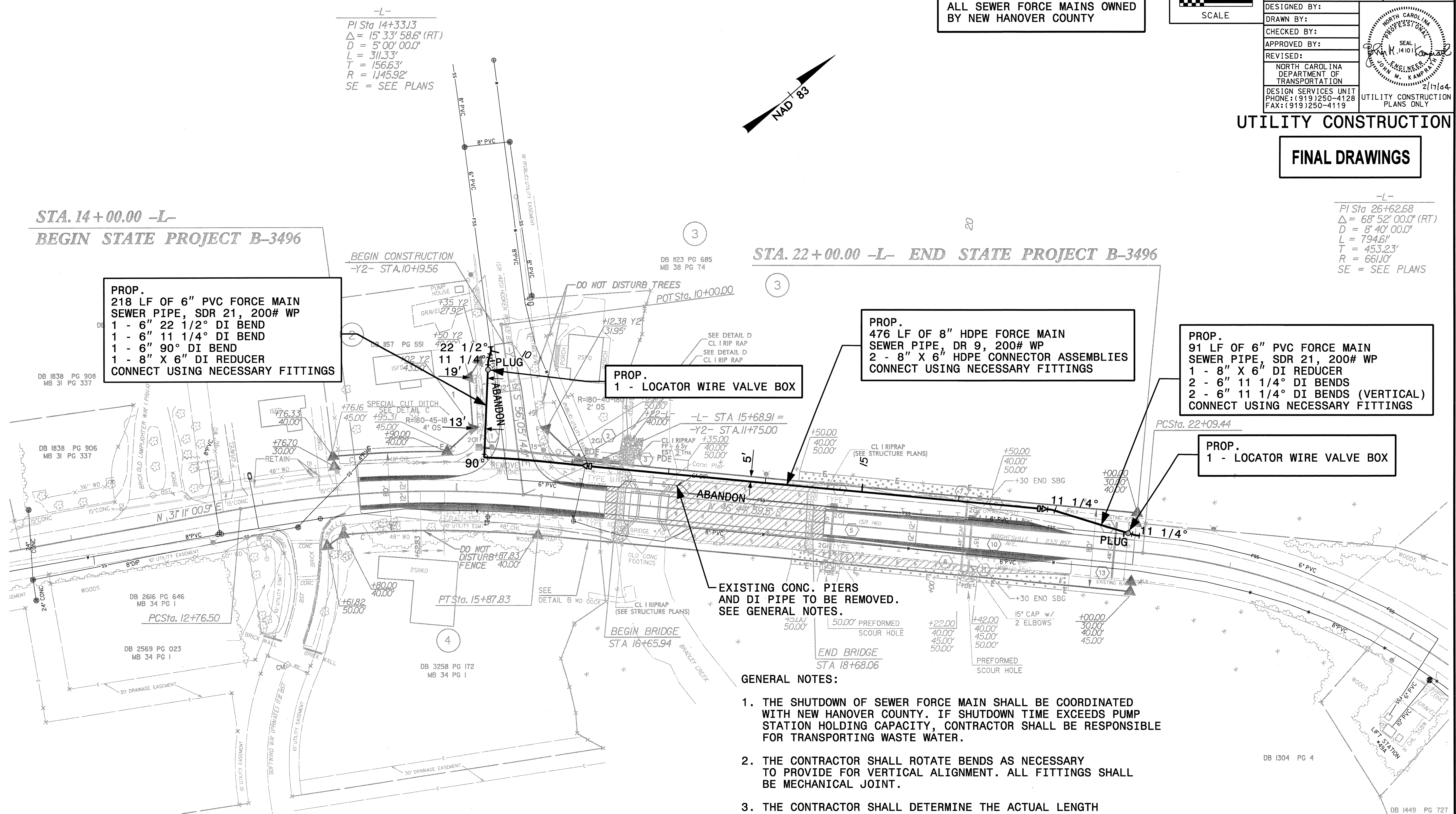
PROP.
218 LF OF 6" PVC FORCE MAIN
SEWER PIPE, SDR 21, 200# WP
1 - 6" 22 1/2° DI BEND
1 - 6" 11 1/4° DI BEND
1 - 6" 90° DI BEND
1 - 8" X 6" DI REDUCER
CONNECT USING NECESSARY FITTINGS

PROP.
1 - LOCATOR WIRE VALVE BOX

PROP.
476 LF OF 8" HDPE FORCE MAIN
SEWER PIPE, DR 9, 200# WP
2 - 8" X 6" HDPE CONNECTOR ASSEMBLIES
CONNECT USING NECESSARY FITTINGS

PROP.
91 LF OF 6" PVC FORCE MAIN
SEWER PIPE, SDR 21, 200# WP
1 - 8" X 6" DI REDUCER
2 - 6" 11 1/4° DI BENDS
2 - 6" 11 1/4° DI BENDS (VERTICAL)
CONNECT USING NECESSARY FITTINGS

PROP.
1 - LOCATOR WIRE VALVE BOX



-L-
PI Sta 14+33.13
 $\Delta = 15' 33" 58.6" (RT)$
 $D = 5' 00" 00.0"$
 $L = 311.33'$
 $T = 156.63'$
 $R = 1,45.92'$
SE = SEE PLANS

-L-
PI Sta 26+62.68
 $\Delta = 68' 52" 00.0" (RT)$
 $D = 8' 40" 00.0"$
 $L = 794.61'$
 $T = 453.23'$
 $R = 661.10'$
SE = SEE PLANS

EXISTING CONC. PIERS AND DI PIPE TO BE REMOVED. SEE GENERAL NOTES.

GENERAL NOTES:

1. THE SHUTDOWN OF SEWER FORCE MAIN SHALL BE COORDINATED WITH NEW HANOVER COUNTY. IF SHUTDOWN TIME EXCEEDS PUMP STATION HOLDING CAPACITY, CONTRACTOR SHALL BE RESPONSIBLE FOR TRANSPORTING WASTE WATER.
2. THE CONTRACTOR SHALL ROTATE BENDS AS NECESSARY TO PROVIDE FOR VERTICAL ALIGNMENT. ALL FITTINGS SHALL BE MECHANICAL JOINT.
3. THE CONTRACTOR SHALL DETERMINE THE ACTUAL LENGTH OF PIPE TO BE RESTRAINED FOR ALL TIE-IN SECTIONS.
4. ALL CONNECTIONS SHALL BE MADE USING NECESSARY FITTINGS. THESE FITTINGS ARE AWWA C110 OR C153 PAID BY C110 WEIGHT IN POUNDS.
5. ALL PVC AND HDPE SEWER FORCE MAINS SHALL HAVE COPPER TRACER WIRE INSTALLED IN TRENCH. THIS SHALL BE CONSIDERED INCIDENTAL TO THE COST OF THE PIPE. SEE DETAIL SHEET UC-4.
6. THE REMOVAL OF THE EXISTING CONCRETE PIERS(3) AND EXPOSED DI FORCE MAIN PIPE(78 LF) AT -L- STA. 17+00, 24' LT. +/- SHALL BE CONSIDERED INCIDENTAL TO THE INSTALLATION OF THE NEW SEWER FORCE MAIN PIPE.
7. CONTRACTOR SHALL MAINTAIN A MINIMUM VERTICAL CLEARANCE OF 18" BETWEEN PROPOSED FORCE MAIN AND EXISTING 8" WATER MAIN.

DATUM DESCRIPTION

THE LOCALIZED COORDINATE SYSTEM DEVELOPED FOR THIS PROJECT IS BASED ON THE STATE PLANE COORDINATES ESTABLISHED BY NCDDOT FOR MONUMENT "B3496-2" WITH NAD 83 STATE PLANE GRID COORDINATES OF NORTHING: 173841808(11) EASTING: 2348781.146(11) THE AVERAGE COMBINED GRID FACTOR USED ON THIS PROJECT (GROUND TO GRID) IS: 1.000038649 THE N.C. LAMBERT GRID BEARING LOCALIZED HORIZONTAL GROUND DISTANCE FROM "B3496-2" TO -L- STATION 14+0000 IS S 42 07 24.26 E DISTANCE 640.1185 FT. ALL LINEAR DIMENSIONS ARE LOCALIZED HORIZONTAL DISTANCES VERTICAL DATUM USED IS NGVD 29

Prepared In the Office of:



701 Corporate Center Drive, Suite 475
Raleigh, NC 27607
(919) 854-6200 - (919) 854-6259(FAX)

10/07/03 10:45 AM \\P\plots\B3496\uc2.pht