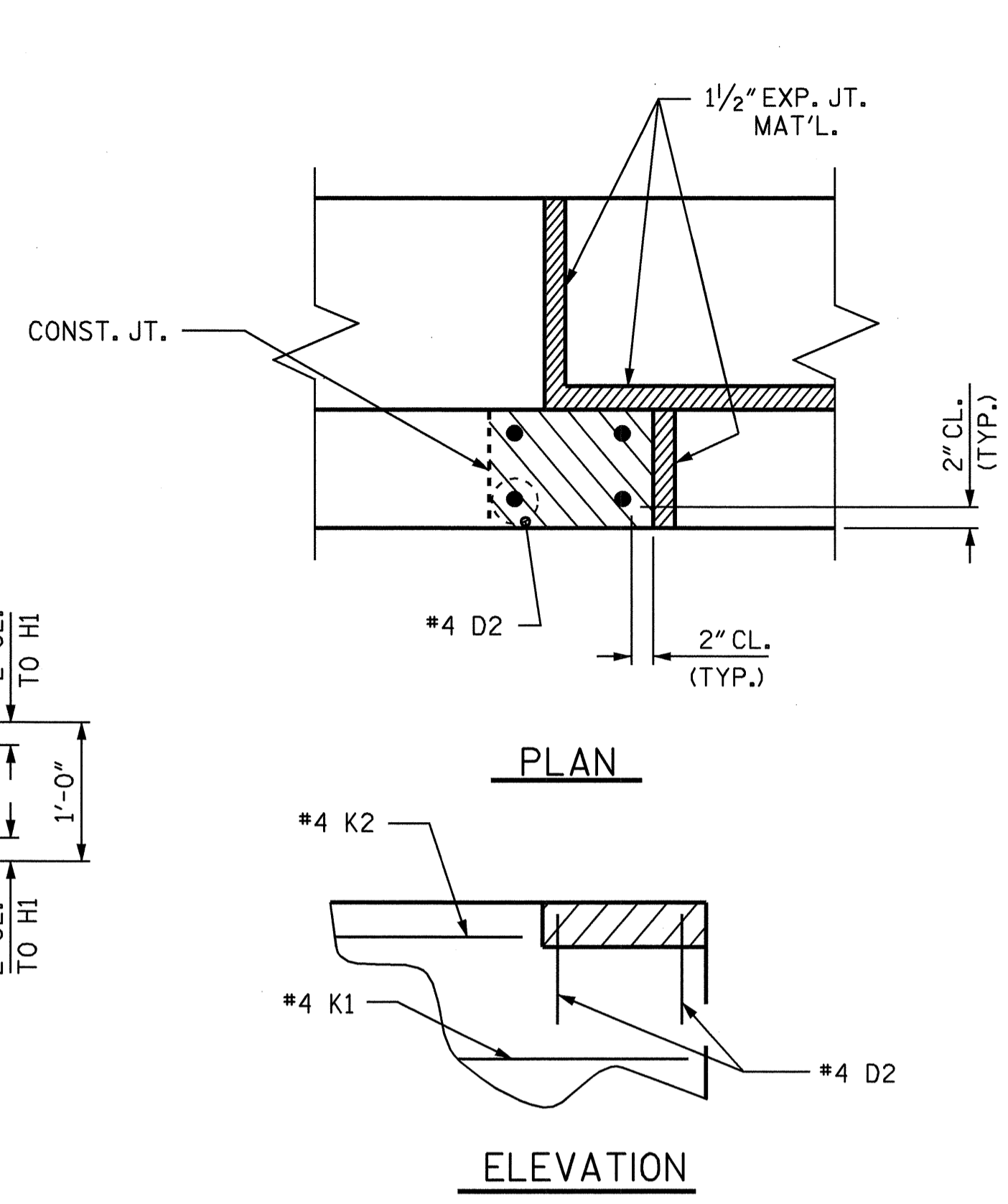
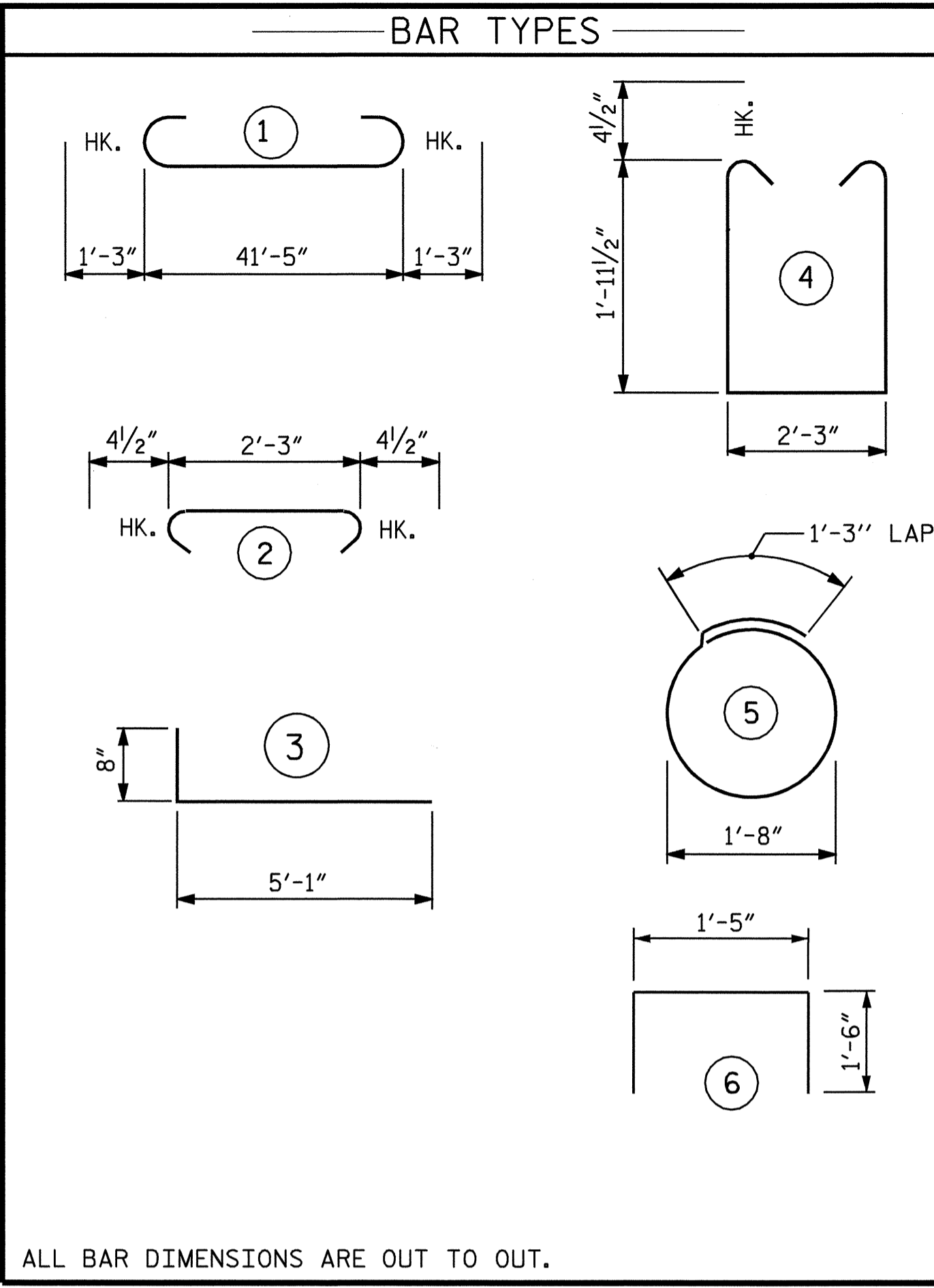


PLAN OF LEFT WING W1
(RIGHT WING W2 SIMILAR)



BLOCKOUT DETAILS



ALL BAR DIMENSIONS ARE OUT TO OUT.

BILL OF MATERIAL					
@ END BENT #1					
BAR NO.	NO.	SIZE	TYPE	LENGTH	WEIGHT
*B1	8	9	1	43'-11"	1195
*B2	12	4	STR	22'-1"	177
*B3	10	4	STR	2'-3"	15
*D1	24	6	STR	1'-6"	54
*D2	8	4	STR	1'-7"	8
*H1	24	4	3	5'-9"	92
*K1	8	4	STR	3'-2"	17
*K2	4	4	STR	1'-11"	5
*S1	37	4	4	6'-11"	171
*S2	37	4	2	3'-0"	74
*S3	16	4	5	6'-6"	69
*U1	4	4	6	4'-5"	12
*V1	32	4	STR	4'-6"	96
*V2	8	4	STR	3'-11"	21

*EPOXY COATED REINFORCING STEEL 2006 LBS.

CLASS "AA" CONCRETE BREAKDOWN

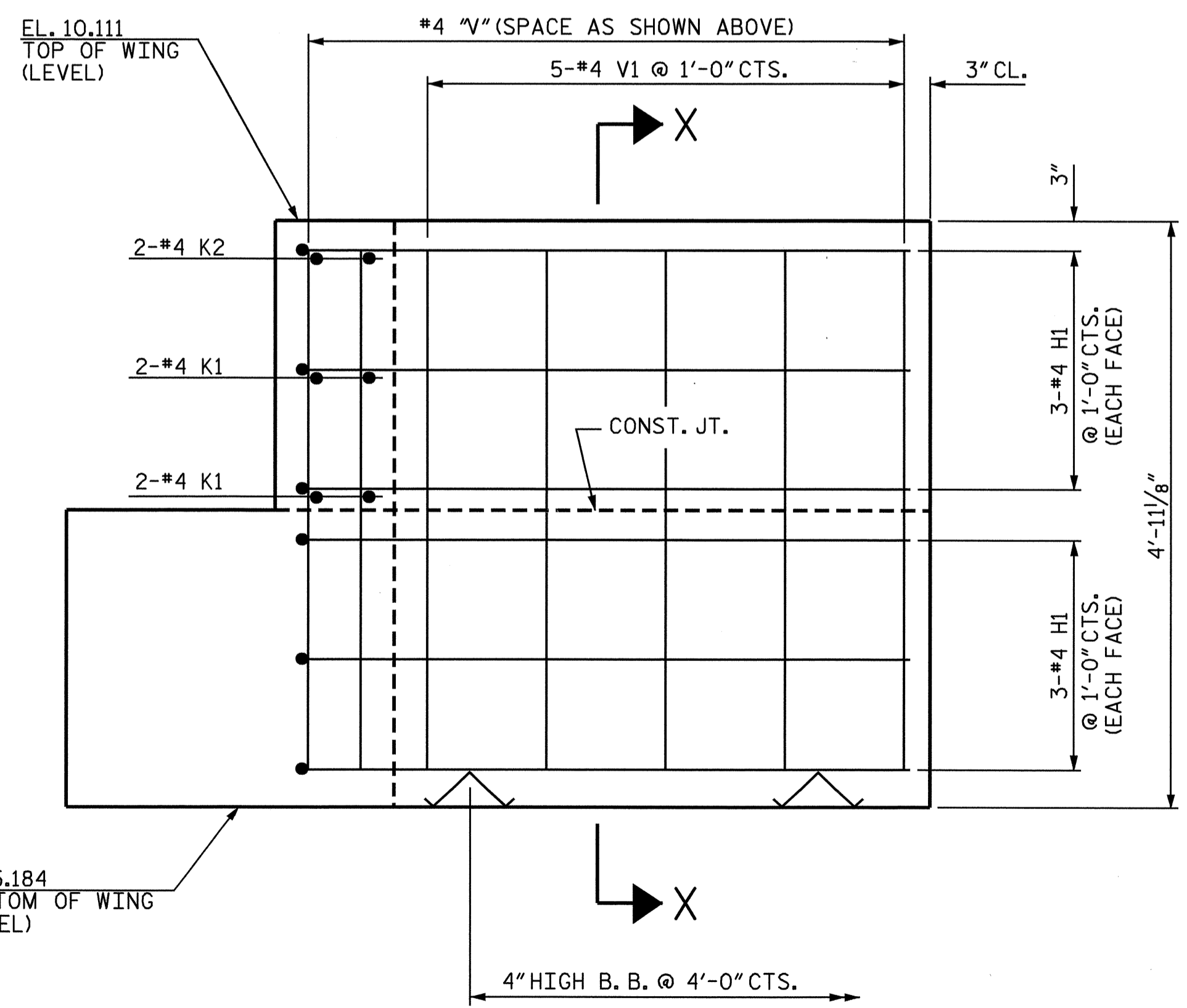
POUR #1 (CAP AND BOTTOM OF WINGS) 11.5 CU. YD.

POUR #2 (TOP OF WINGS) 1.4 CU. YD.

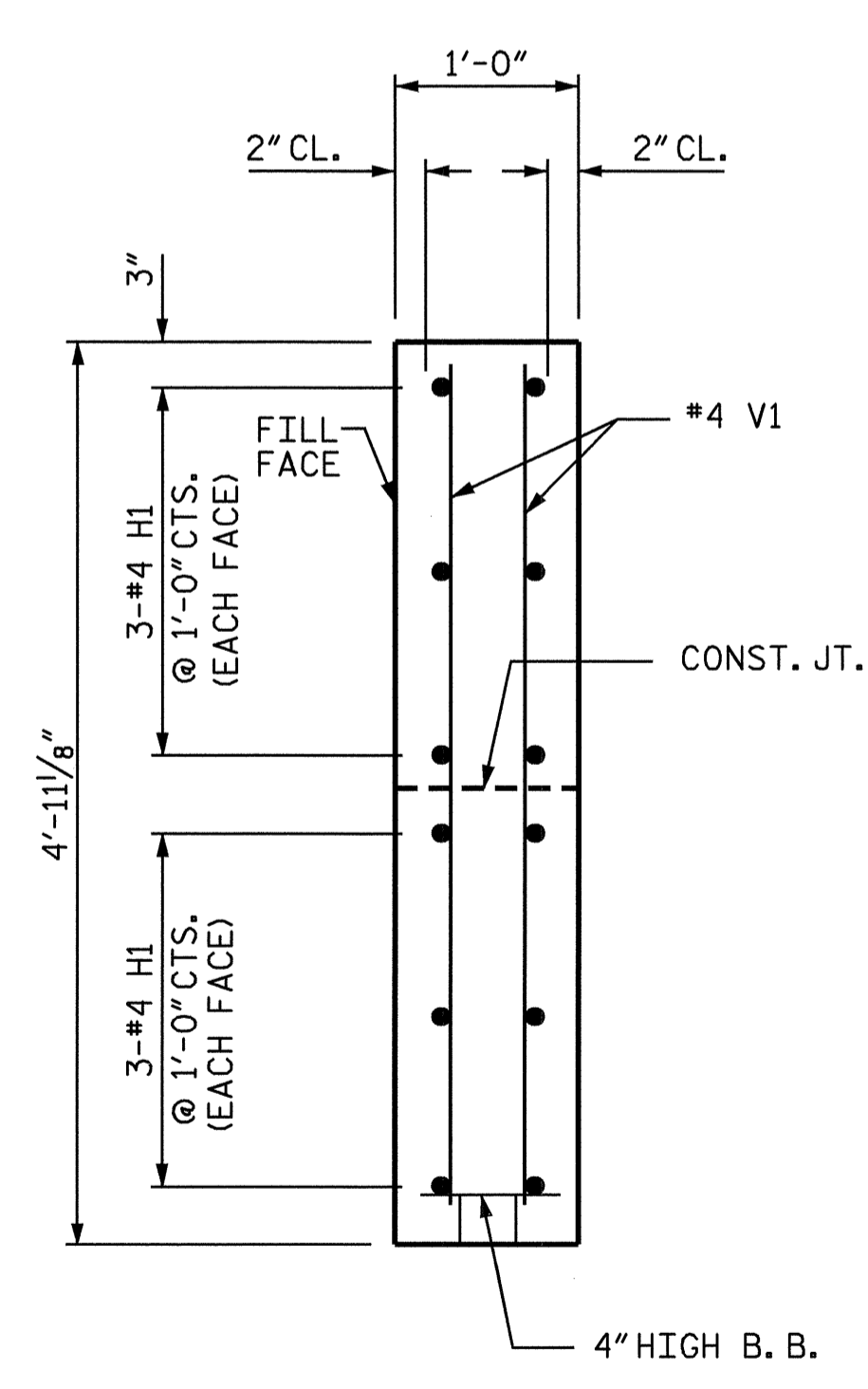
POUR #3 (LATERAL GUIDES) 0.1 CU. YD.

TOTAL CLASS "AA" CONCRETE 13.0 CU. YD.

HP 12 X 53 STEEL PILES NO. 8 360 LIN. FT.



ELEVATION OF LEFT WING W1
(RIGHT WING W2 SIMILAR)



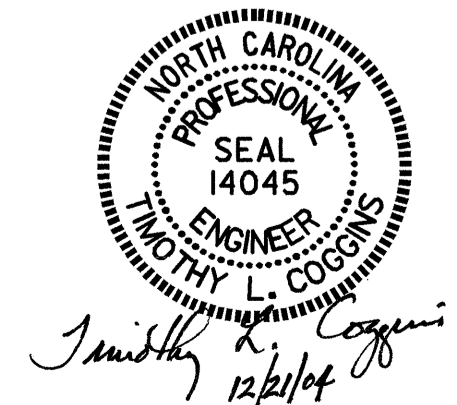
SECTION X-X

PROJECT NO. B-3496
NEW HANOVER COUNTY
 STATION: 17+67.00 -L-

SHEET 3 OF 3

STATE OF NORTH CAROLINA
 DEPARTMENT OF TRANSPORTATION
 RALEIGH

SUBSTRUCTURE
 END BENT #1



REVISIONS				SHEET NO.
NO.	BY:	DATE:	NO.	DATE:
1			3	
2			4	

TOTAL SHEETS 28