

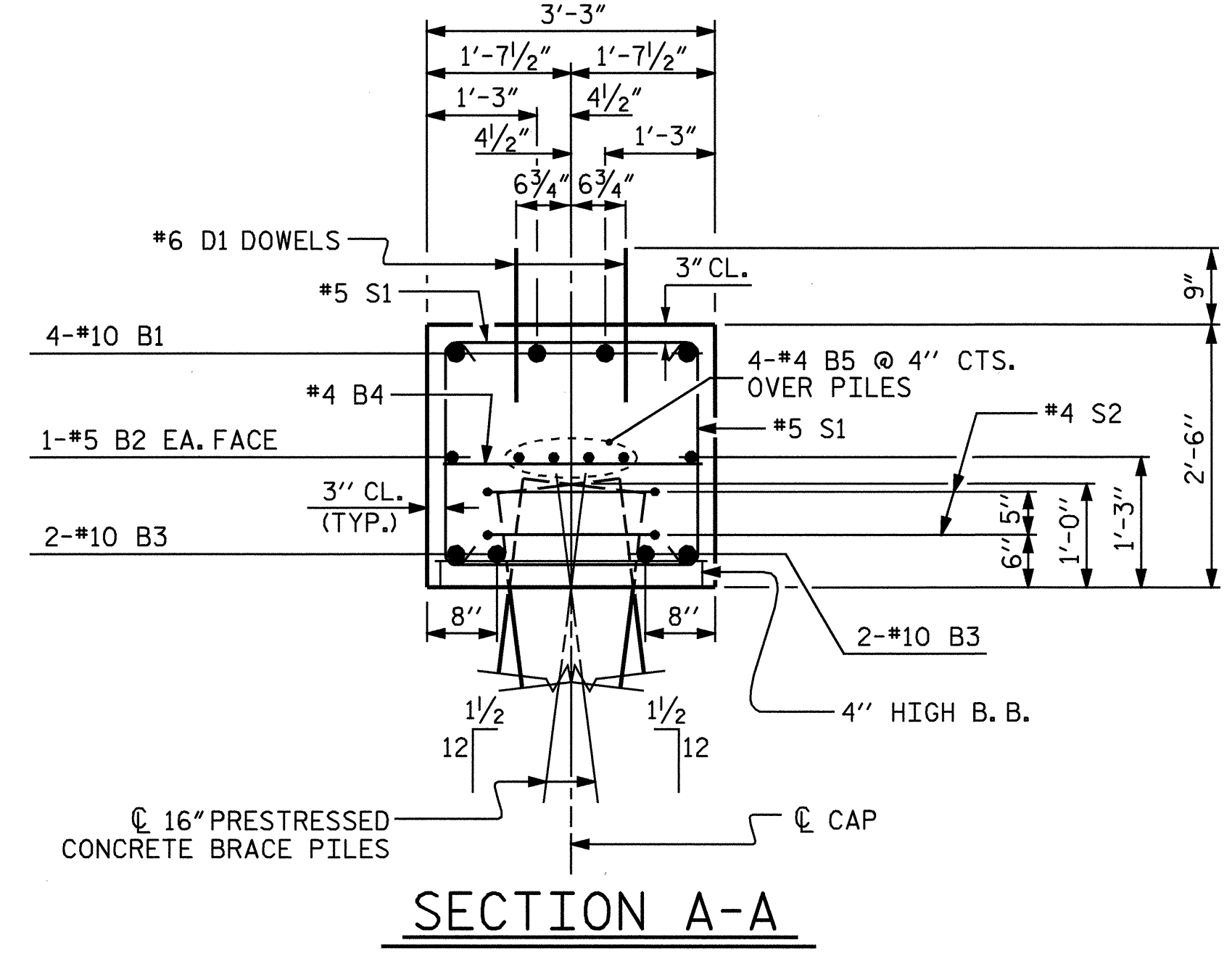
NOTES:

STIRRUPS IN CAP MAY BE SHIFTED AS NECESSARY TO CLEAR DOWELS.

ALL REINFORCING STEEL IS EPOXY COATED.

THE LATERAL GUIDE AT EACH END OF CAP IS NOT TO BE POURED UNTIL AFTER THE CORED SLAB UNITS ARE IN PLACE.

ALL CONCRETE IN THE BENT CAP SHALL BE CLASS "AA".



BILL OF MATERIAL					
BENT #1					
BAR	NO.	SIZE	TYPE	LENGTH	WEIGHT
* B1	4	#10	1	41'-10"	720
* B2	2	#5	STR	39'-1"	82
* B3	4	#10	STR	39'-1"	673
* B4	13	#4	STR	2'-9"	24
* B5	8	#4	STR	21'-0"	112
* D1	48	#6	STR	1'-6"	108
* S1	29	#5	2	7'-7"	229
* S2	20	#4	3	8'-1"	108
* U1	6	#4	4	4'-11"	20
* U2	4	#4	4	5'-9"	15
* U3	2	#9	4	10'-1"	69
* U4	8	#4	4	3'-6"	19
* EPOXY COATED REINFORCING STEEL LBS. 2179					
CLASS "AA" CONCRETE BREAKDOWN					
POUR #1 (CAP)				C.Y.	11.9
POUR #2 (LATERAL GUIDE)				C.Y.	0.1
TOTAL CLASS "AA" CONCRETE				C.Y.	12.0
16" PRESTRESSED CONCRETE PILES					
NO. 10				LIN. FT.	300
STEEL PILE TIPS				EACH	10
BAR TYPES					
ALL BAR DIMENSIONS ARE OUT TO OUT					

PROJECT NO. B-3496
 NEW HANOVER COUNTY
 STATION: 17+67.00 -L-

STATE OF NORTH CAROLINA DEPARTMENT OF TRANSPORTATION RALEIGH				
SUBSTRUCTURE BENT #1				
REVISIONS				SHEET NO.
NO.	BY:	DATE:	NO.	DATE:
1			3	
2			4	
				S-19
				TOTAL SHEETS 28

DRAWN BY: PEGGY ADKINS DATE: 8-03
 CHECKED BY: F. GUZMAN DATE: 9-03

