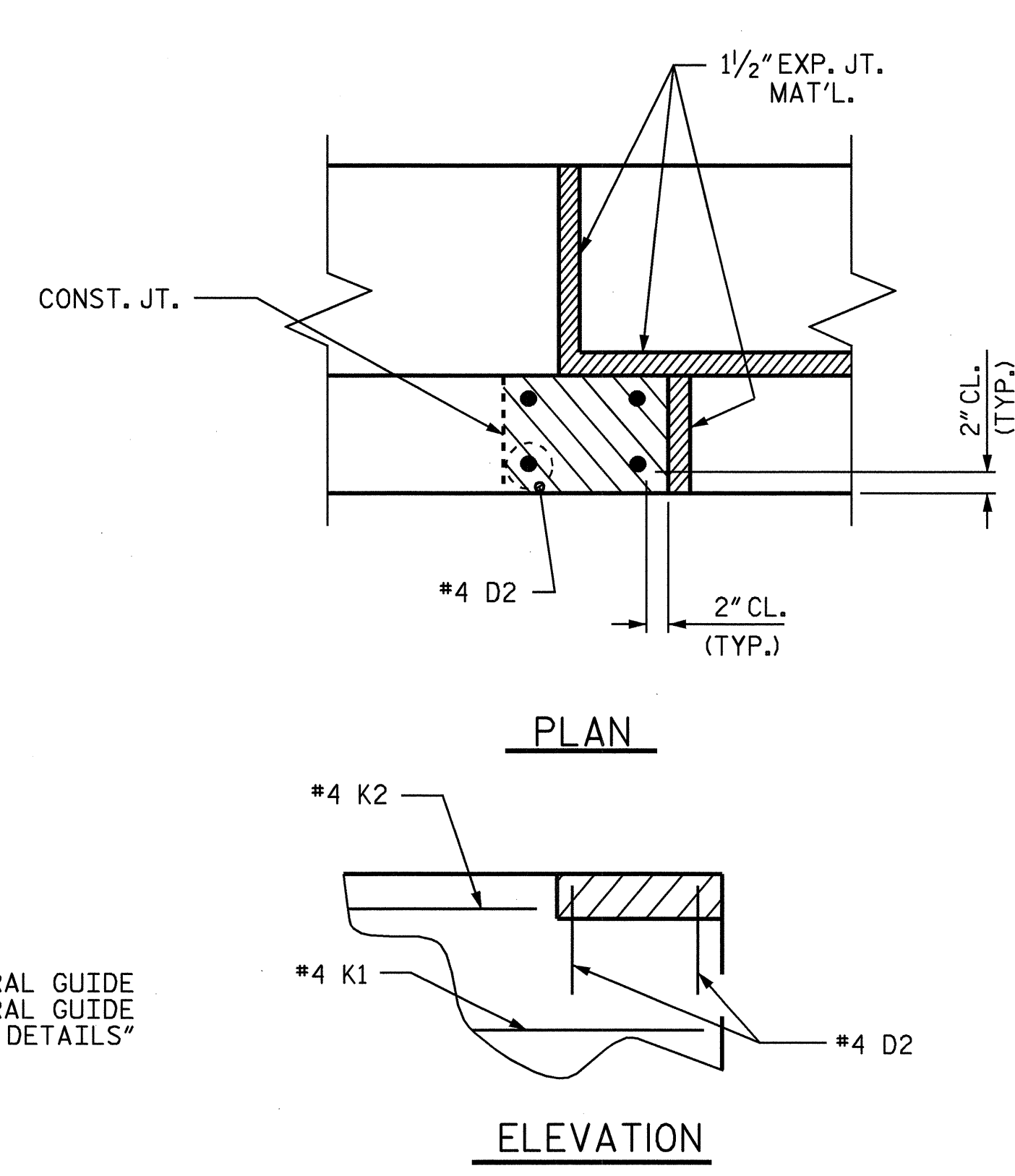


PLAN OF LEFT WING W1
(RIGHT WING W2 SIMILAR)

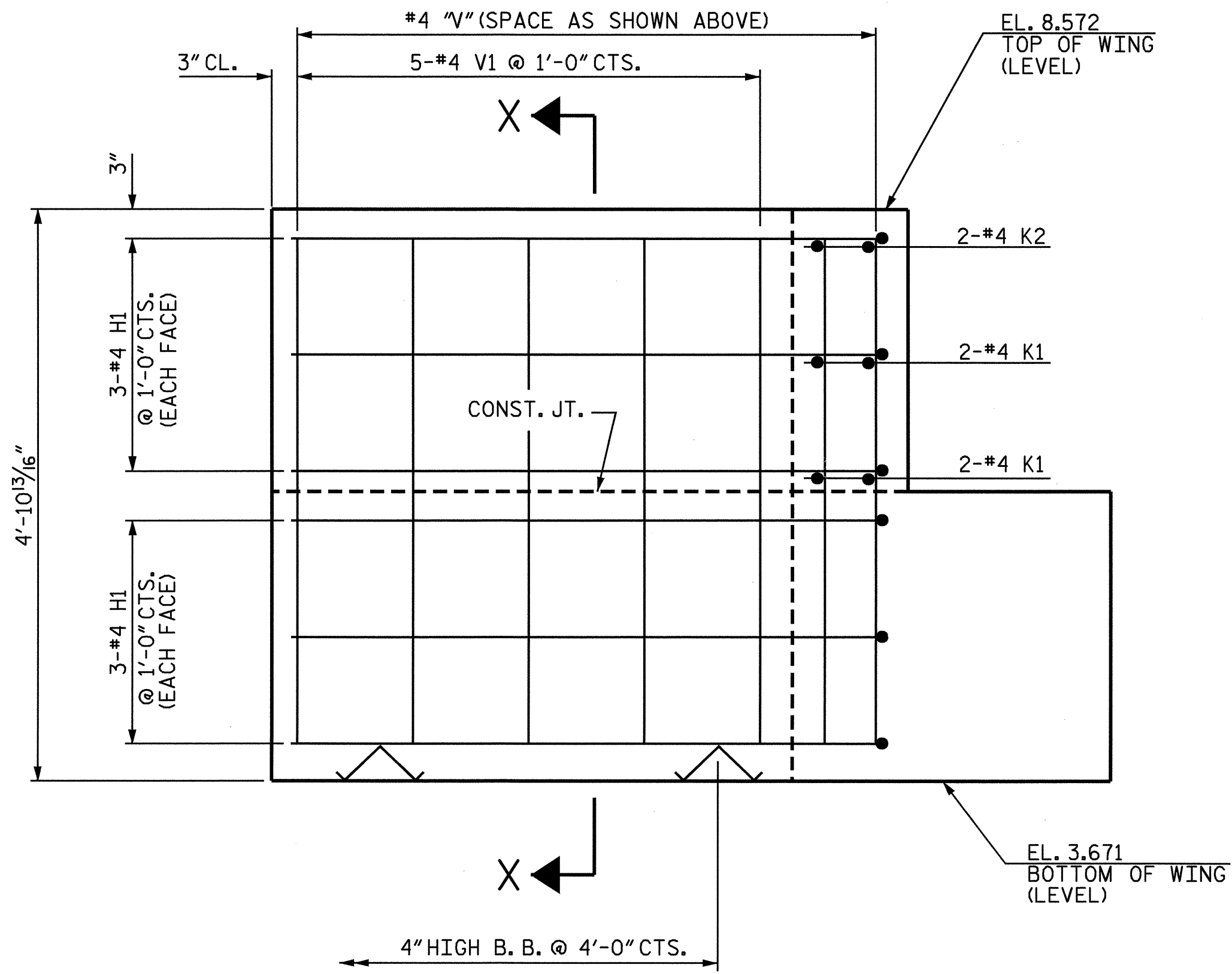


BLOCKOUT DETAILS

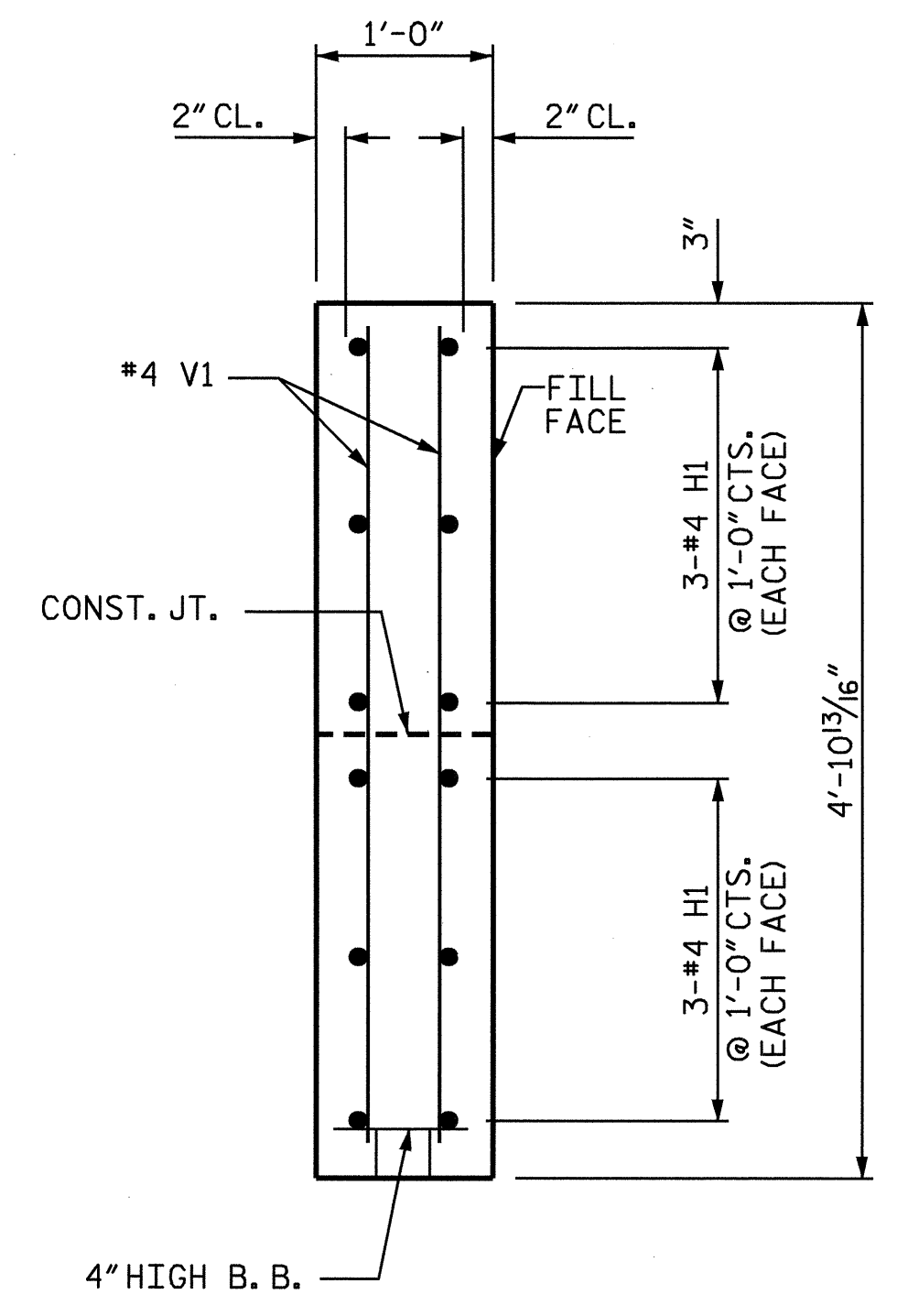
BAR TYPES

ALL BAR DIMENSIONS ARE OUT TO OUT.

BILL OF MATERIAL					
@ END BENT #2					
BAR NO.	SIZE	TYPE	LENGTH	WEIGHT	
*B1	8	9	1	43'-11"	1195
*B2	12	4	STR	22'-1"	177
*B3	10	4	STR	2'-3"	15
*D1	24	6	STR	1'-6"	54
*D2	8	4	STR	1'-7"	8
*H1	24	4	3	5'-9"	92
*K1	8	4	STR	3'-2"	17
*K2	4	4	STR	1'-11"	5
*S1	37	4	4	6'-11"	171
*S2	37	4	2	3'-0"	74
*S3	16	4	5	6'-6"	69
*U1	4	4	6	4'-5"	12
*V1	32	4	STR	4'-6"	96
*V2	8	4	STR	3'-11"	21
*EPOXY COATED REINFORCING STEEL 2006 LBS.					
CLASS "AA" CONCRETE BREAKDOWN					
POUR #1 (CAP AND BOTTOM OF WINGS)				11.5 CU. YD.	
POUR #2 (TOP OF WINGS)				1.4 CU. YD.	
POUR #3 (LATERAL GUIDES)				0.1 CU. YD.	
TOTAL CLASS "AA" CONCRETE				13.0 CU. YD.	
HP 12 X 53 STEEL PILES					
NO. 8				360 LIN. FT.	

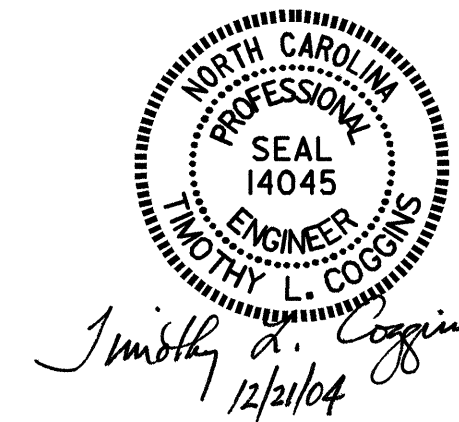


ELEVATION OF LEFT WING W1
(RIGHT WING W2 SIMILAR)



SECTION X-X

DRAWN BY : PEGGY ADKINS DATE : 7-03
CHECKED BY : F. GUZMAN DATE : 9-03



PROJECT NO. B-3496
NEW HANOVER COUNTY
STATION: 17+67.00 -L-
SHEET 3 OF 3

STATE OF NORTH CAROLINA DEPARTMENT OF TRANSPORTATION RALEIGH					
SUBSTRUCTURE END BENT #2					
REVISIONS					
NO.	BY:	DATE:	NO.	BY:	DATE:
1			3		
2			4		
					SHEET NO. S-24
					TOTAL SHEETS 28