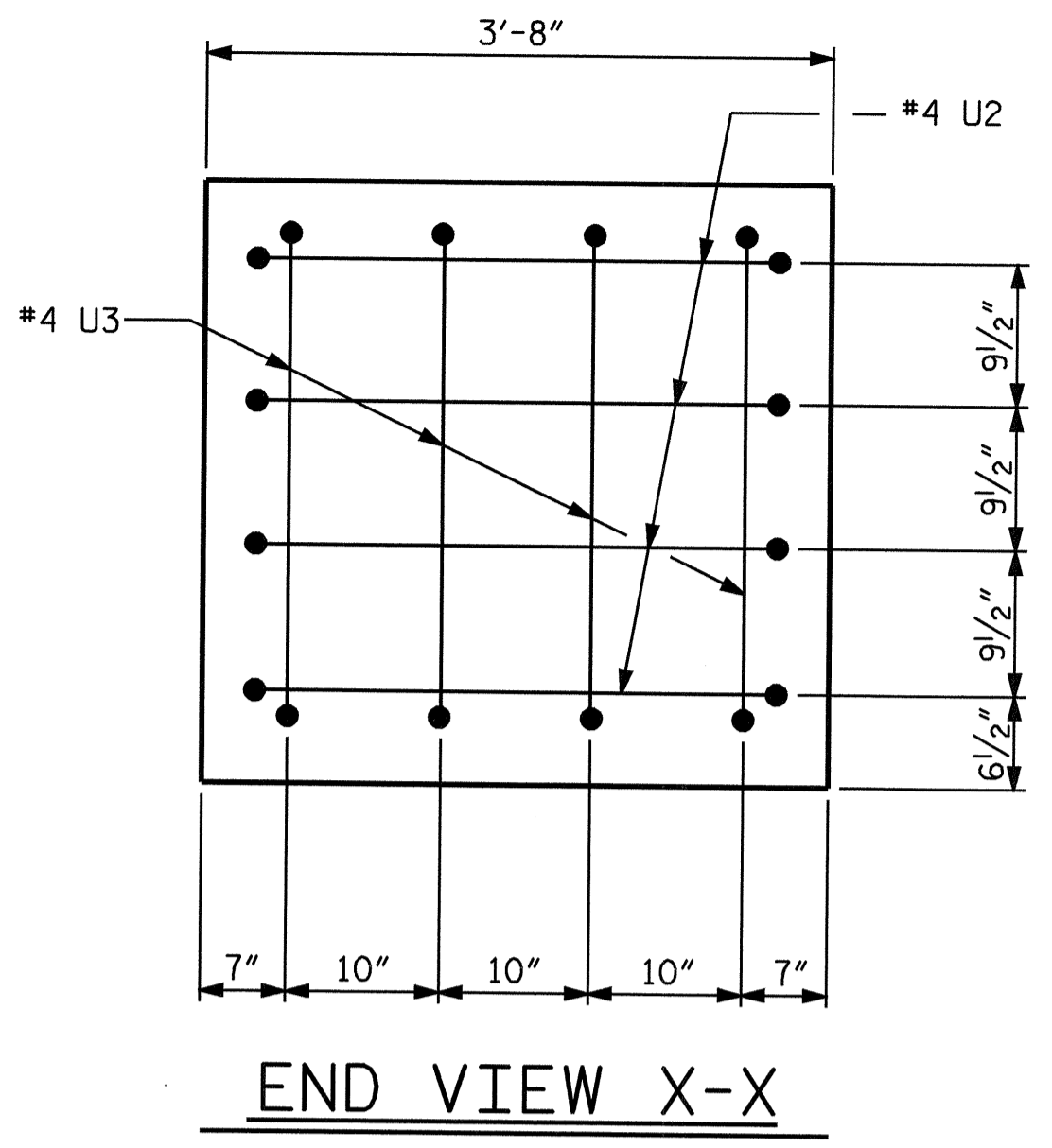
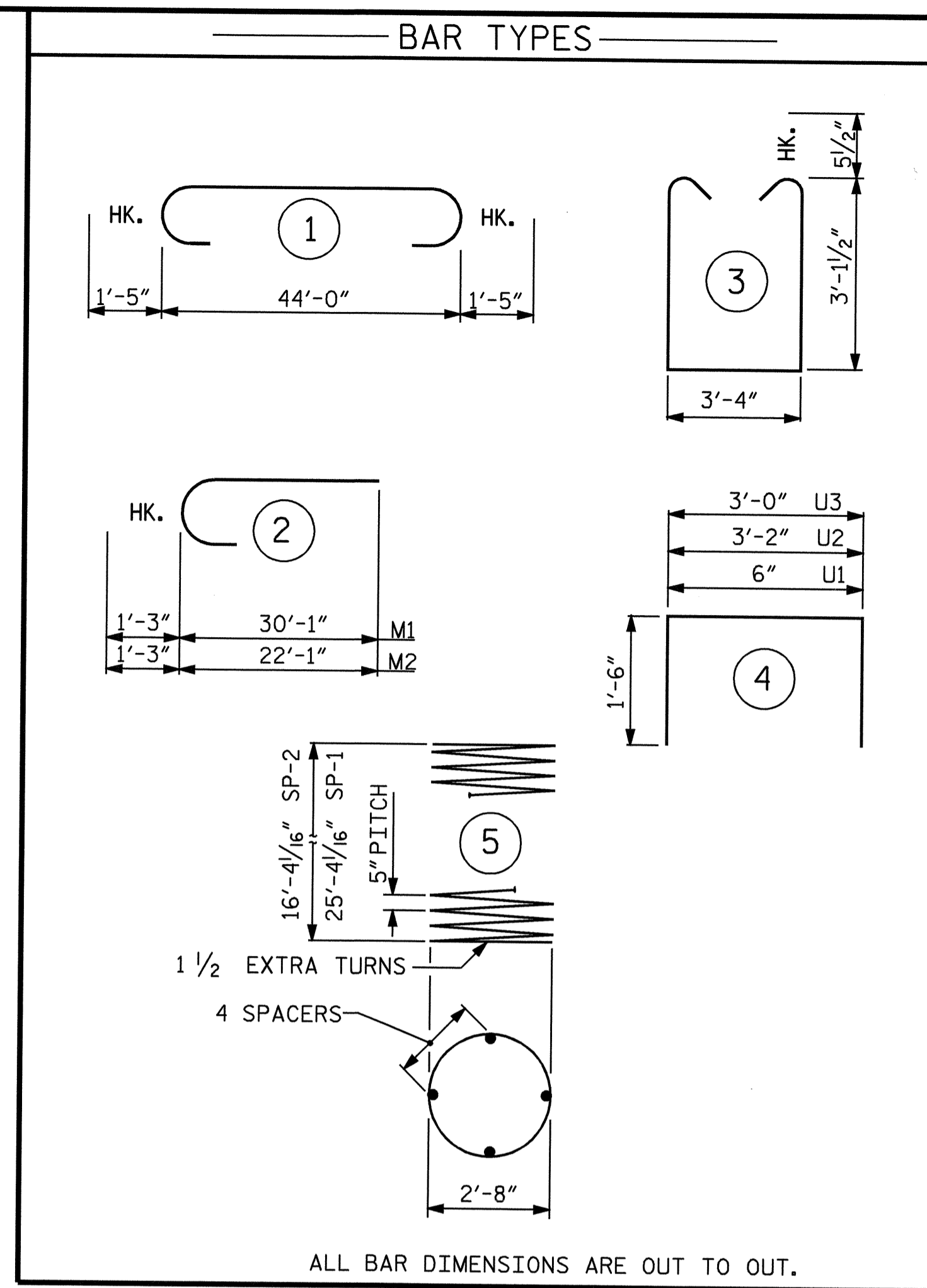


SECTION A-A



END VIEW X-X



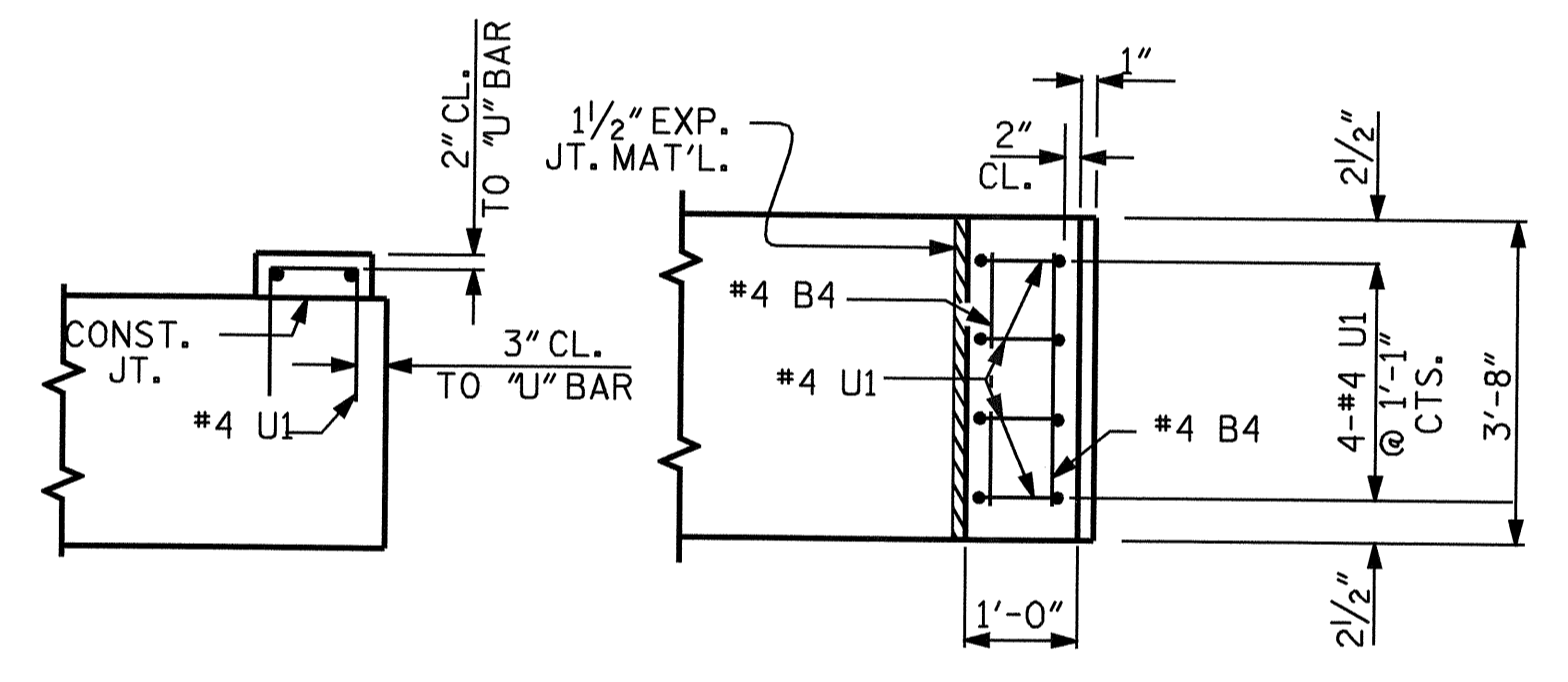
\* THE SP-1 AND SP-2 SPIRAL REINFORCING STEEL SHALL BE W31 OR D-31 COLD DRAWN WIRE OR #5 PLAIN OR DEFORM BAR.

BILL OF MATERIAL BENT #1

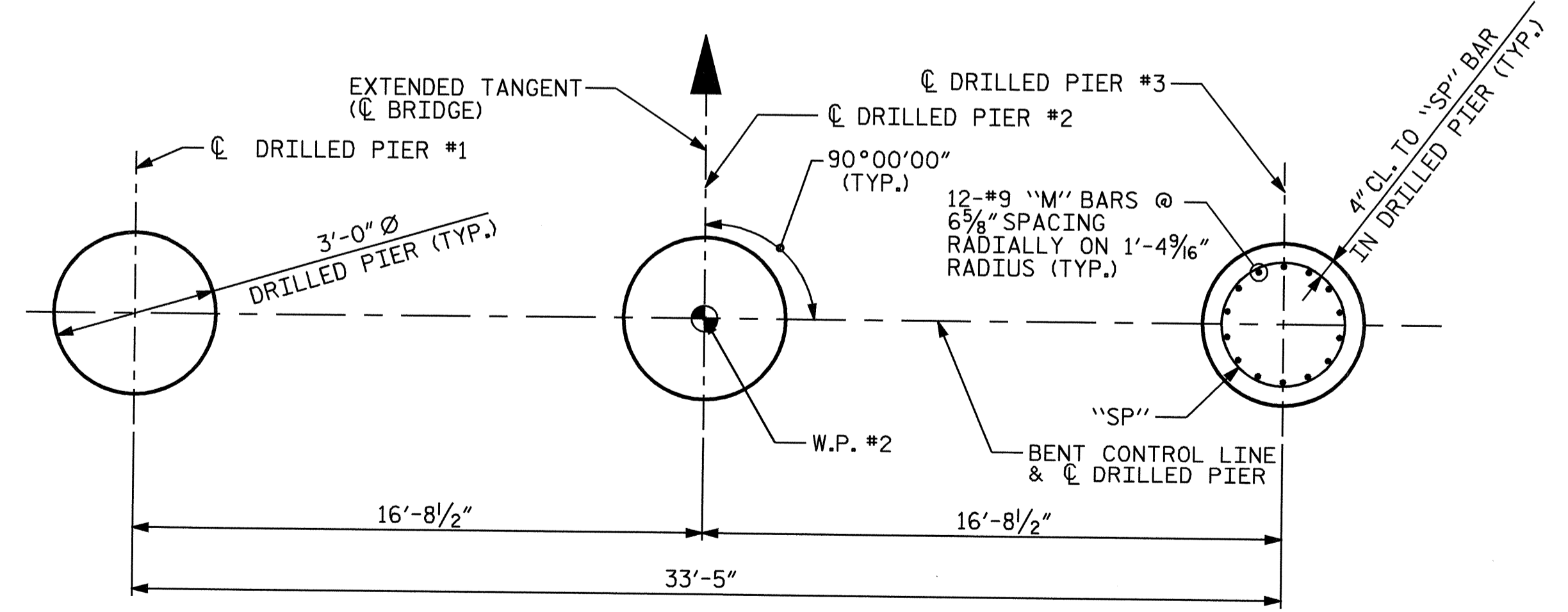
BAR NO	NO	SIZE	TYPE	LENGTH	WEIGHT
B1	7	10	1	46'-10"	1411
B2	4	5	STR	44'-0"	184
B3	7	10	STR	44'-0"	1325
B4	4	4	STR	3'-4"	9
D1	56	6	STR	1'-6"	126
M1	24	9	2	31'-4"	2556
M2	12	9	2	23'-4"	952
S1	38	5	3	10'-6"	416
U1	8	4	4	3'-6"	19
U2	8	4	4	6'-2"	33
U3	8	4	4	6'-0"	32
REINFORCING STEEL				lbs.	7063
SP-1	2	*	5	459'-6"	959
SP-2	1	*	5	308'-9"	322

SPIRAL COLUMN REINFORCING STEEL		lbs.	
CLASS A CONCRETE BREAKDOWN			
POUR #2	(CAP)	21.2	C.Y.
POUR #3	LATERAL GUIDES	0.1	C.Y.
TOTAL		21.3	C.Y.

DRILLED PIERS CONCRETE BREAKDOWN			
POUR #1 (DRILLED PIERS)		17.9	C.Y.
3'-0" Ø DRILLED PIERS (NOT IN SOIL)	LINEAR FEET	33.0	
3'-0" Ø DRILLED PIERS (IN SOIL)	LINEAR FEET	35.5	
PERMANENT STEEL CASING FOR 3'-0" Ø DRILLED PIERS	FEET	32.0	
CROSS HOLE SONIC LOGGING	EACH	1.0	
CSL TUBES	LINEAR FEET	304.0	

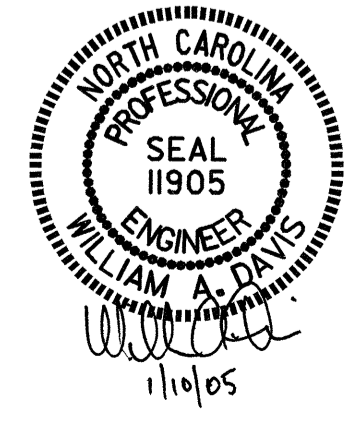


PLAN ELEVATION  
DETAIL A



PLAN OF DRILLED PIERS

DRAWN BY: J. D. HAWK DATE: 6/6/04  
CHECKED BY: J. G. KHARVA DATE: 7/6/04



PROJECT NO. B-3182  
HALIFAX COUNTY  
STATION: 15+07.50 -L-  
SHEET 2 OF 2

STATE OF NORTH CAROLINA DEPARTMENT OF TRANSPORTATION RALEIGH					
SUBSTRUCTURE BENT #1					
REVISIONS					SHEET NO.
NO.	BY:	DATE:	NO.	BY:	DATE:
1			3		
2			4		
TOTAL SHEETS					12