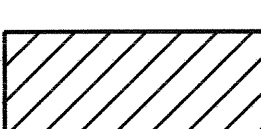
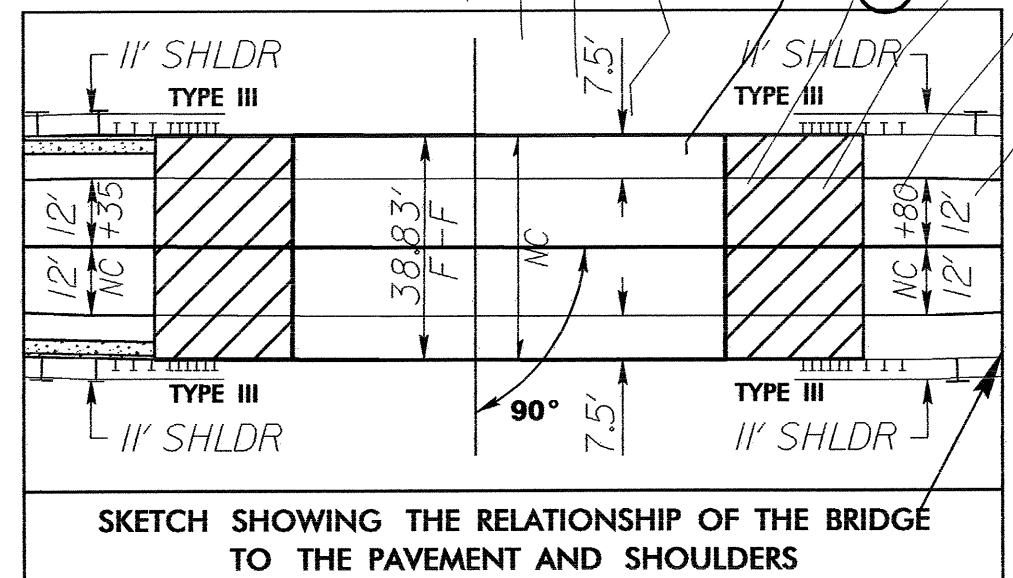
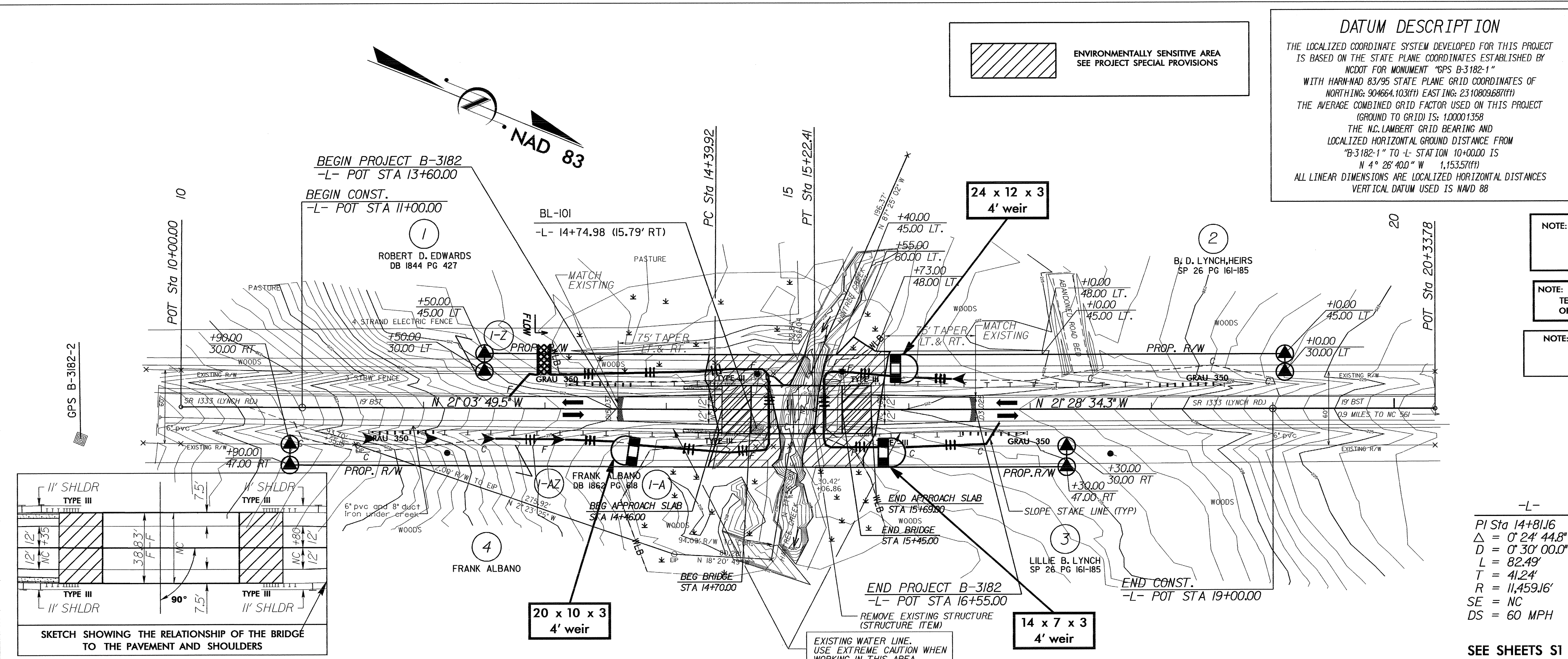


PROJECT REFERENCE NO.	SHEET NO.
B-3182	EC-4/CONST.4
RW SHEET NO.	
ROADWAY DESIGN ENGINEER	HYDRAULICS ENGINEER

DATUM DESCRIPTION
 THE LOCALIZED COORDINATE SYSTEM DEVELOPED FOR THIS PROJECT IS BASED ON THE STATE PLANE COORDINATES ESTABLISHED BY MCDOT FOR MONUMENT "GPS B-3182-1" WITH HARN-MAD 83/95 STATE PLANE GRID COORDINATES OF NORTHING: 904664.103(11) EASTING: 2310809.687(11) THE AVERAGE COMBINED GRID FACTOR USED ON THIS PROJECT (GROUND TO GRID) IS: 1.00001358 THE N.C. LAMBERT GRID BEARING AND LOCALIZED HORIZONTAL GROUND DISTANCE FROM "B-3182-1" TO L- STATION 10+00.00 IS N 4° 28' 40" W 1,153.57(11) ALL LINEAR DIMENSIONS ARE LOCALIZED HORIZONTAL DISTANCES VERTICAL DATUM USED IS NAVD 88

 ENVIRONMENTALLY SENSITIVE AREA
 SEE PROJECT SPECIAL PROVISIONS



NOTE: UTILIZE SPECIAL STILLING BASIN AND/OR TEMPORARY ROCK SEDIMENT DAM TYPE - B AS STILLING BASIN WHERE APPLICABLE.

NOTE: TEMPORARY SILT FENCE SHALL BE INSTALLED A MINIMUM OF 3 FEET FROM TOE OF FILL IN WETLAND AREAS

NOTE: PLACE TEMPORARY ROCK SEDIMENT DAMS TYPE-B AND TEMPORARY ROCK SILT CHECKS TYPE-A AT DRAINAGE OUTLETS.

CLEARING AND GRUBBING EROSION CONTROL FOR CONSTRUCTION SHEET 4

-L-
 PI Sta 14+81.6
 $\Delta = 0^\circ 24' 44.8\"$ (LT)
 $D = 0^\circ 30' 00.0\"$
 $L = 82.49'$
 $T = 41.24'$
 $R = 11,459.16'$
 $SE = NC$
 $DS = 60$ MPH

SEE SHEETS S1 THRU S19 FOR STRUCTURE PLANS

