


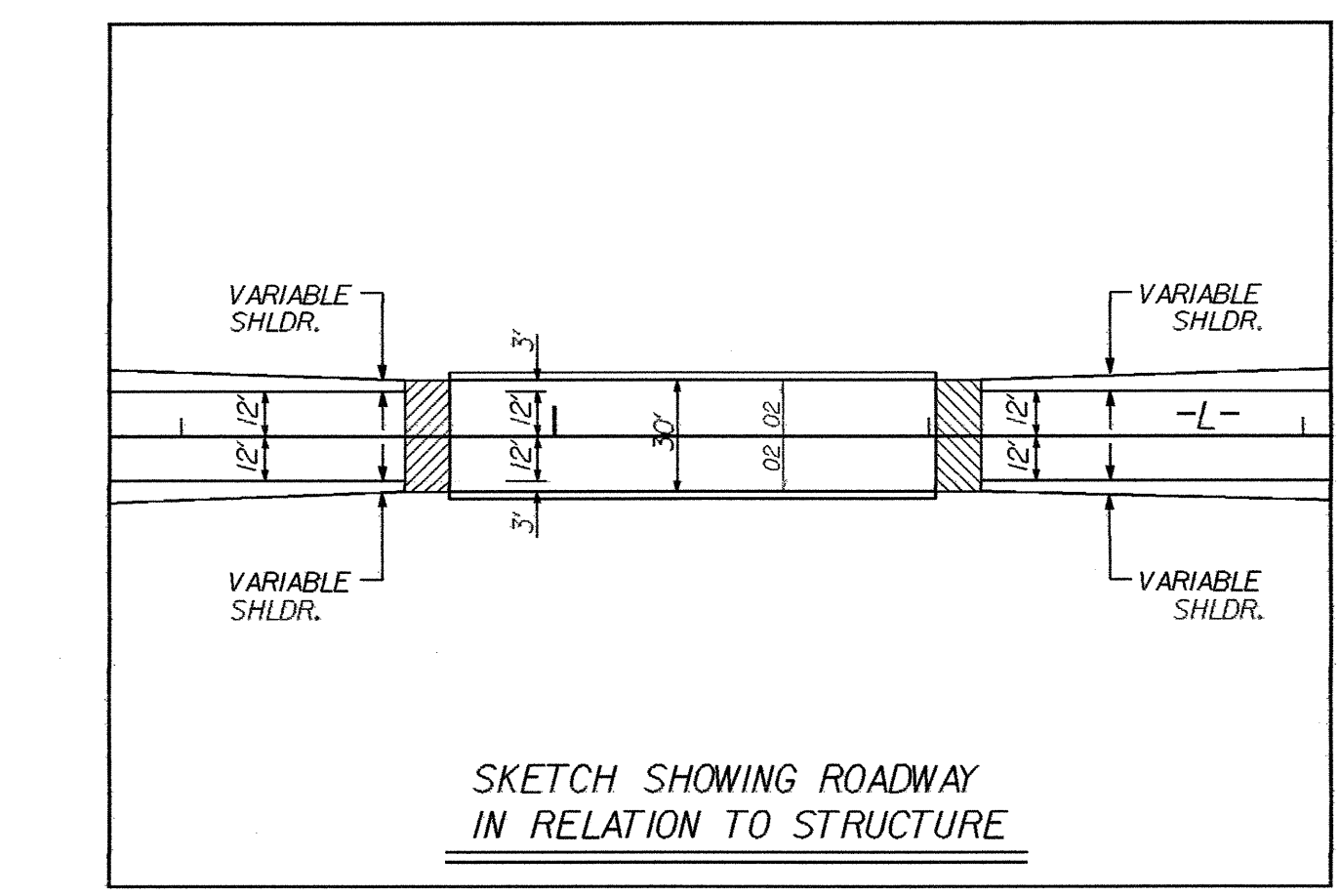
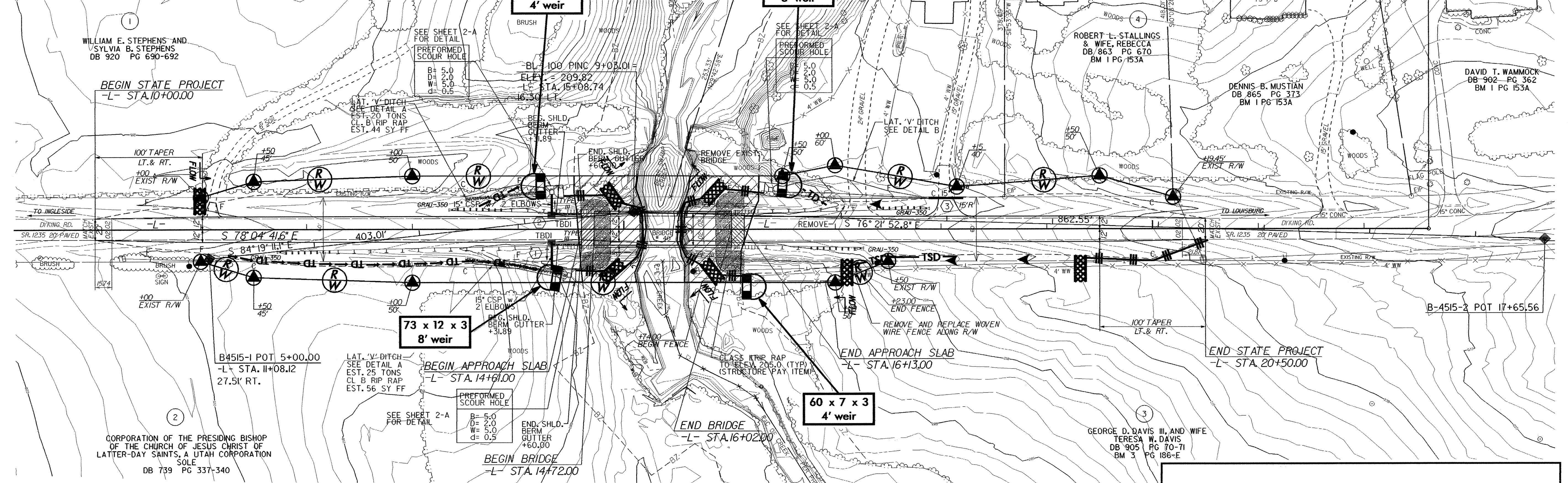
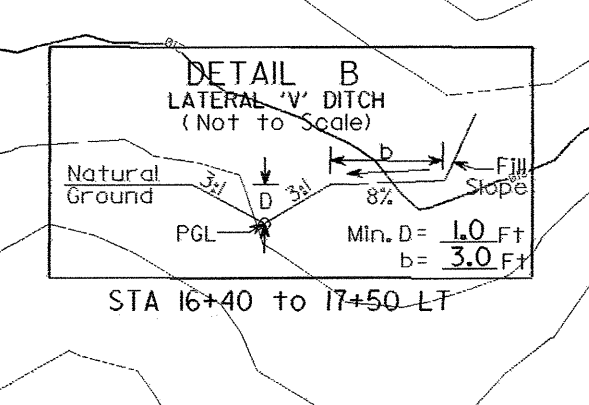
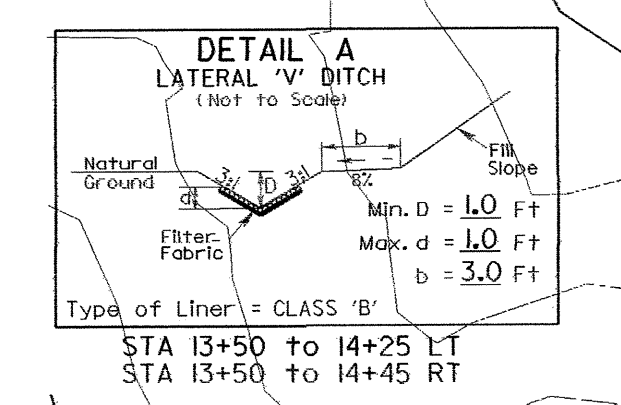
PROJECT REFERENCE NO.	SHEET NO.
B-4515	EC-3/CONST.4
RW SHEET NO.	
ROADWAY DESIGN ENGINEER	HYDRAULICS ENGINEER

NOTE:
PLACE TEMPORARY ROCK SEDIMENT DAMS TYPE - B
AND TEMPORARY ROCK SILT CHECKS TYPE-A AT
DRAINAGE OUTLETS.


CLEARING AND GRUBBING
EROSION CONTROL FOR
CONSTRUCTION SHEET 4

 ENVIRONMENTALLY SENSITIVE AREA
SEE PROJECT SPECIAL PROVISIONS

NOTE:
UTILIZE SPECIAL STILLING BASIN AND/OR TEMPORARY
ROCK SEDIMENT DAM TYPE - B AS STILLING
BASIN WHERE APPLICABLE.



DATUM DESCRIPTION
THE LOCALIZED COORDINATE SYSTEM DEVELOPED FOR THIS PROJECT IS BASED ON THE STATE PLANE COORDINATES ESTABLISHED BY MCDOT FOR MONUMENT "B4515-1" WITH NAD 83/95 STATE PLANE GRID COORDINATES OF NORTHING: 868256.3278(1) EASTING: 220076.3399(1) THE AVERAGE COMBINED GRID FACTOR USED ON THIS PROJECT (GROUND TO GRID) IS: 0.99999088 THE N.C. LAMBERT GRID BEARING AND LOCALIZED HORIZONTAL GROUND DISTANCE FROM "B4515-1" TO -L- STATION 10+00.00 IS S 68°48'05.6" E 111.57' ALL LINEAR DIMENSIONS ARE LOCALIZED HORIZONTAL DISTANCES VERTICAL DATUM USED IS NAVD 88

 DENOTES APPROACH SLAB

