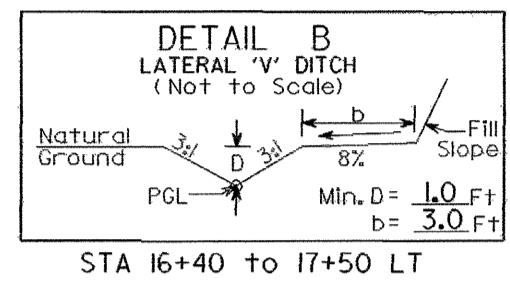
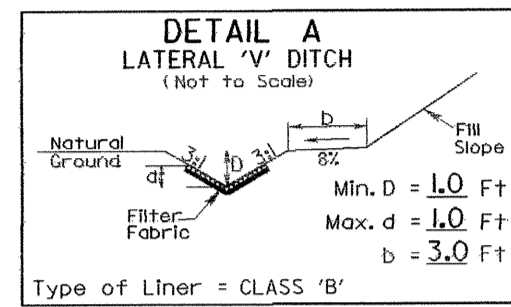


PROJECT REFERENCE NO.	SHEET NO.
B-4515	EC-4/CONST.4
RW SHEET NO.	
ROADWAY DESIGN ENGINEER	HYDRAULICS ENGINEER

NOTE:
UTILIZE SPECIAL STILLING BASIN AND/OR TEMPORARY ROCK SEDIMENT DAM TYPE - B AS STILLING BASIN WHERE APPLICABLE.



Type of Liner = CLASS 'B'
STA 13+50 to 14+25 LT
STA 13+50 to 14+45 RT

STA 16+40 to 17+50 LT

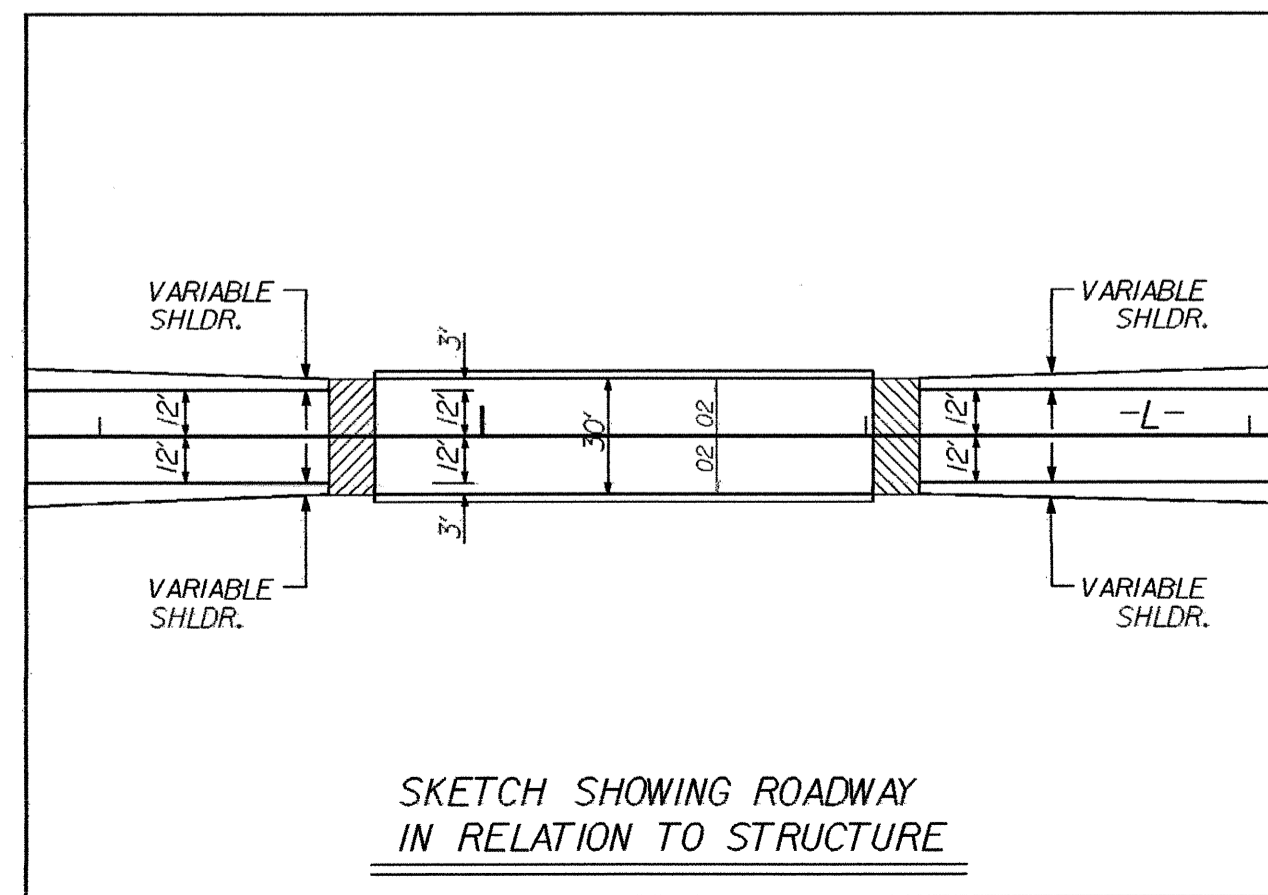
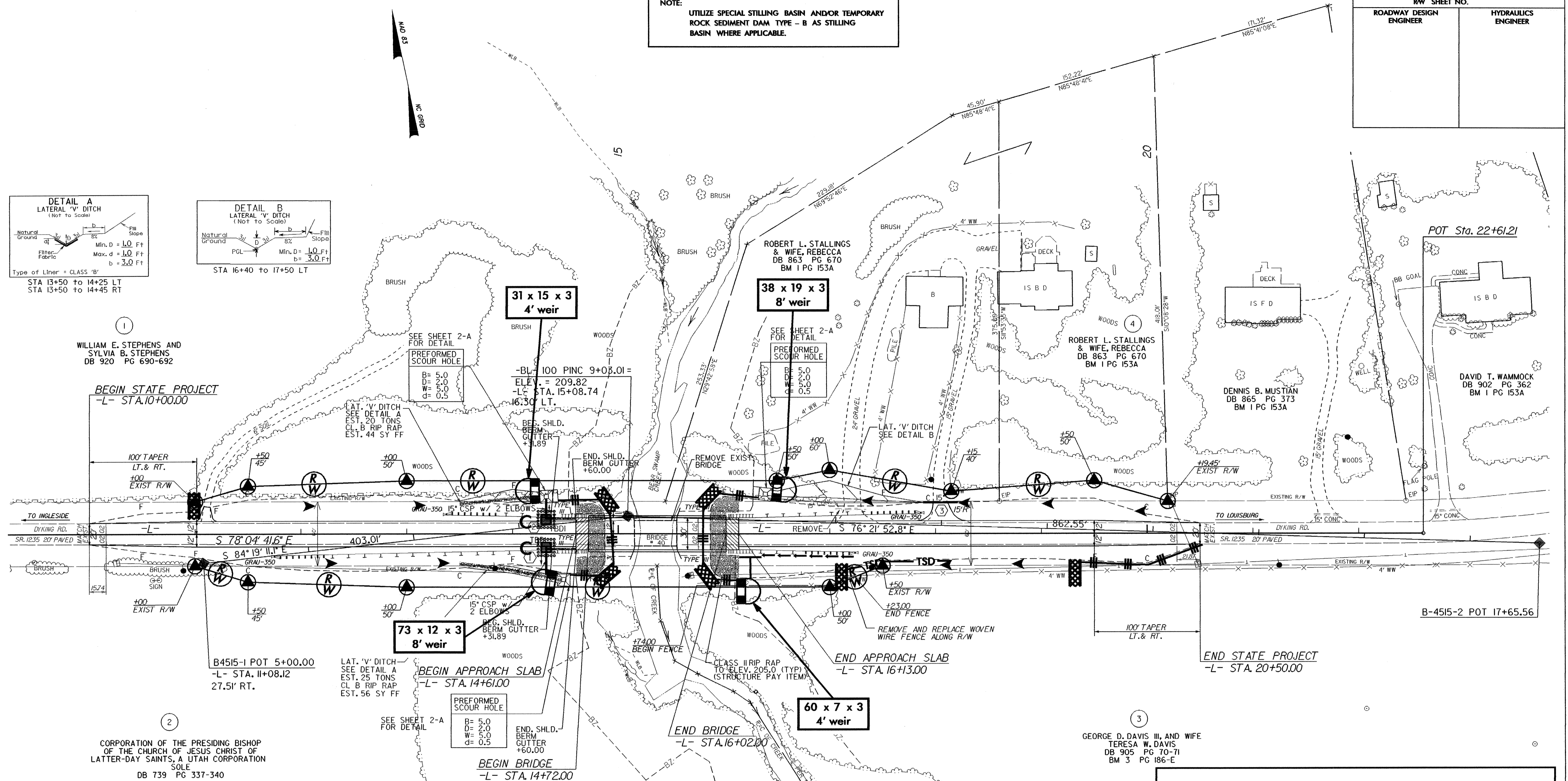
WILLIAM E. STEPHENS AND SYLVIA B. STEPHENS
DB 920 PG 690-692

ROBERT L. STALLINGS & WIFE, REBECCA
DB 863 PG 670
BM 1 PG 153A

ROBERT L. STALLINGS & WIFE, REBECCA
DB 863 PG 670
BM 1 PG 153A

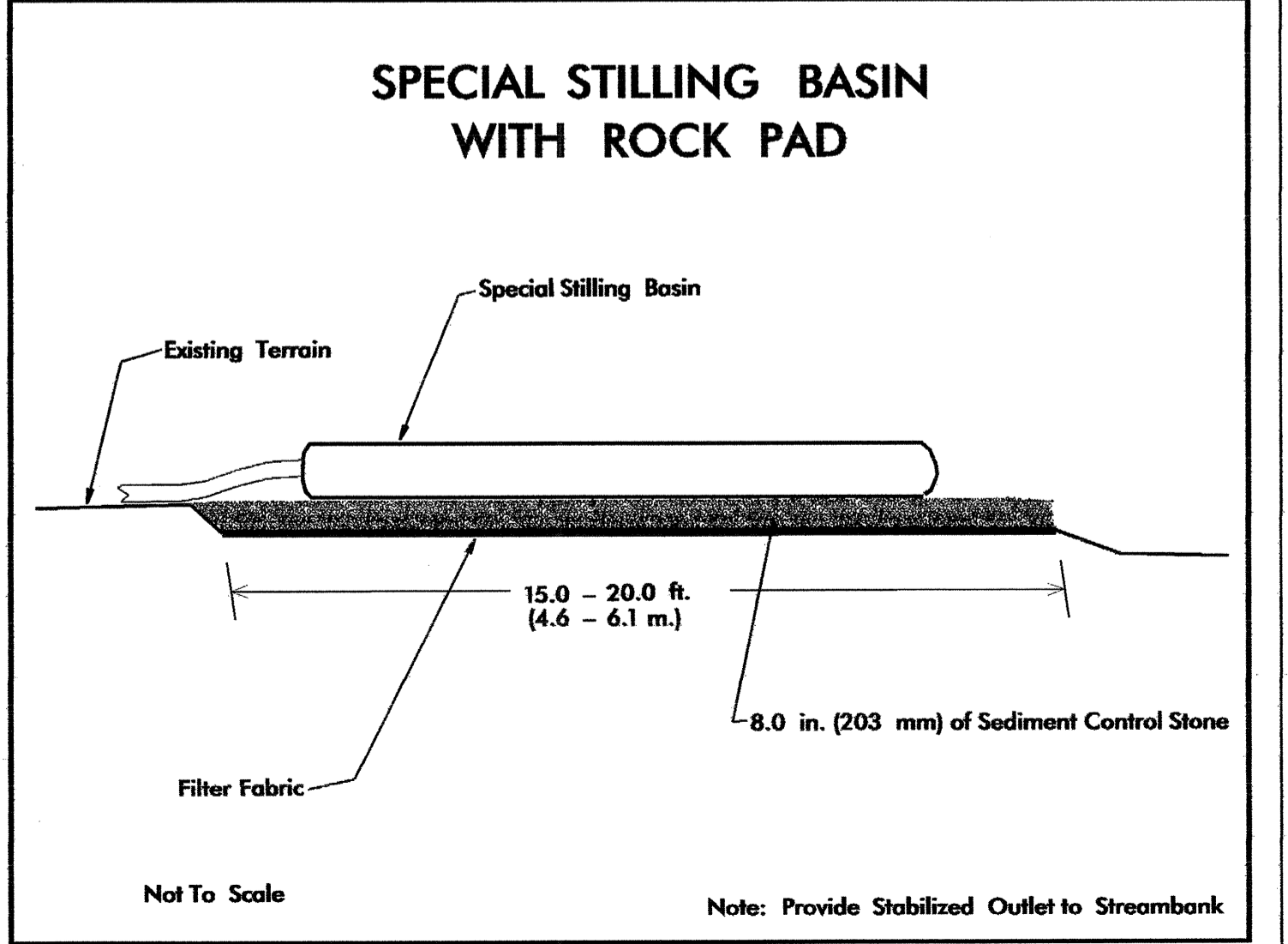
DENNIS B. MUSTIAN
DB 865 PG 373
BM 1 PG 153A

DAVID T. WAMMOCK
DB 902 PG 362
BM 1 PG 153A



DATUM DESCRIPTION
THE LOCALIZED COORDINATE SYSTEM DEVELOPED FOR THIS PROJECT IS BASED ON THE STATE PLANE COORDINATES ESTABLISHED BY NCDOT FOR MONUMENT "B4515-1" WITH NAD 83/95 STATE PLANE GRID COORDINATES OF NORTHING: 868256.3278(1) EASTING: 2200776.3399(1) THE AVERAGE COMBINED GRID FACTOR USED ON THIS PROJECT (GROUND TO GRID) IS: 0.99999088 THE N.C. LAMBERT GRID BEARING AND LOCALIZED HORIZONTAL GROUND DISTANCE FROM "B4515-1" TO -L- STATION 10+00.00 IS S 68°48'05.6" E 111.57' ALL LINEAR DIMENSIONS ARE LOCALIZED HORIZONTAL DISTANCES VERTICAL DATUM USED IS NAVD 88

■ DENOTES APPROACH SLAB



Not To Scale
Note: Provide Stabilized Outlet to Streambank