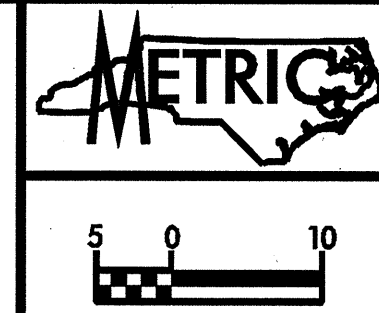


NOTES

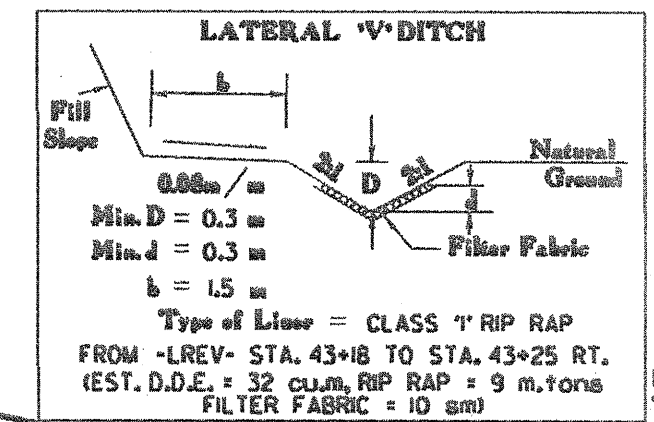
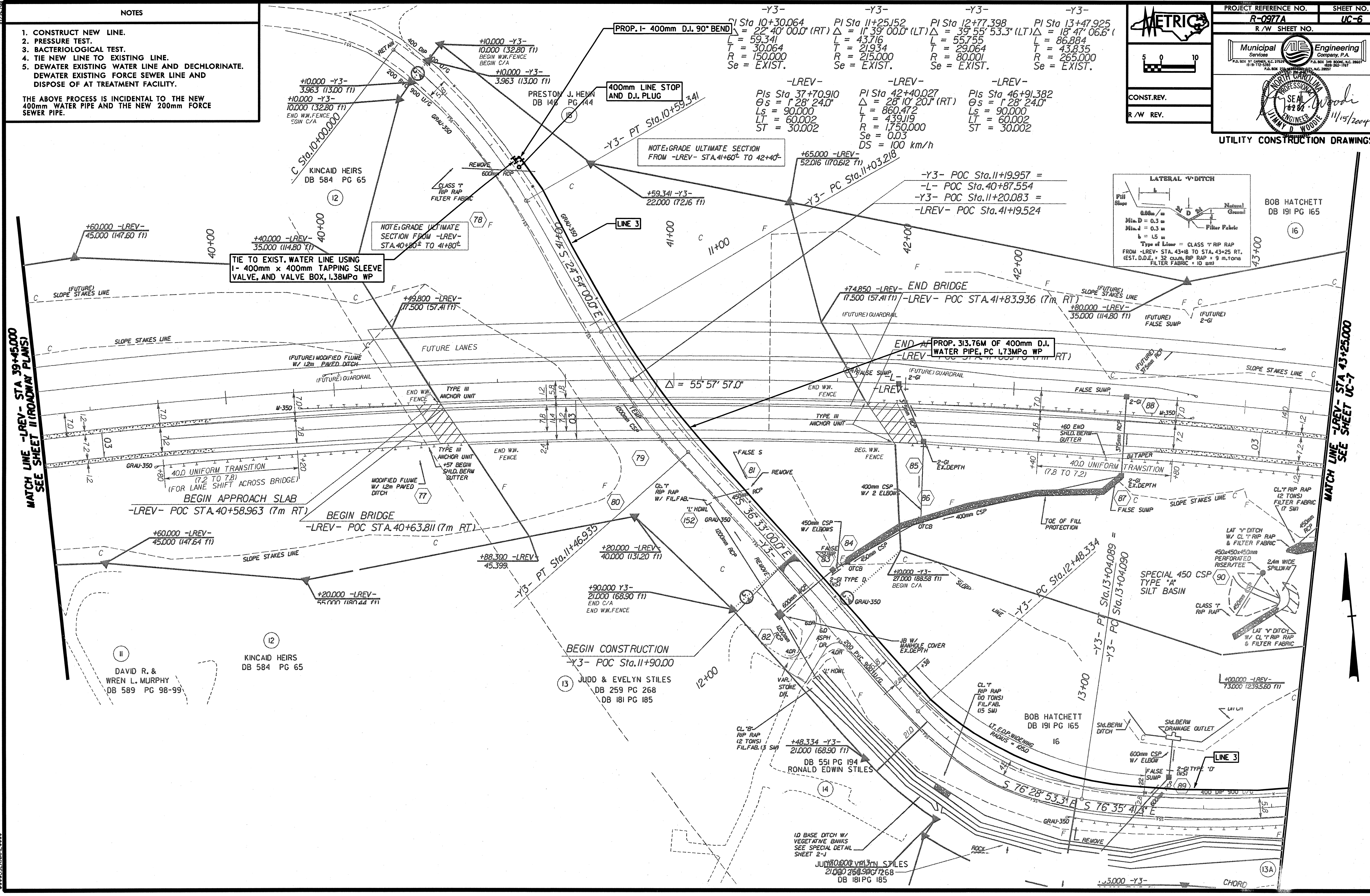
1. CONSTRUCT NEW LINE.
2. PRESSURE TEST.
3. BACTERIOLOGICAL TEST.
4. TIE NEW LINE TO EXISTING LINE.
5. DEWATER EXISTING WATER LINE AND DECHLORINATE. DEWATER EXISTING FORCE SEWER LINE AND DISPOSE OF AT TREATMENT FACILITY.

THE ABOVE PROCESS IS INCIDENTAL TO THE NEW 400mm WATER PIPE AND THE NEW 200mm FORCE SEWER PIPE.



PROJECT REFERENCE NO.	SHEET NO.
R-0977A	UC-6
R/W SHEET NO.	
CONST. REV. R/W REV.	

UTILITY CONSTRUCTION DRAWINGS



MATCH LINE -LREV- STA 39+45.000 SEE SHEET II (ROADWAY PLANS)

MATCH LINE -LREV- STA 43+25.000 SEE SHEET UC-7

DAVID R. & WREN L. MURPHY
DB 589 PG 98-99

KINCAID HEIRS
DB 584 PG 65

BEGIN CONSTRUCTION
-Y3- POC Sta. 11+90.00

JUDD & EVELYN STILES
DB 259 PG 268
DB 181 PG 185

BOB HATCHETT
DB 191 PG 165

RONALD EDWIN STILES
DB 551 PG 194

CHORD