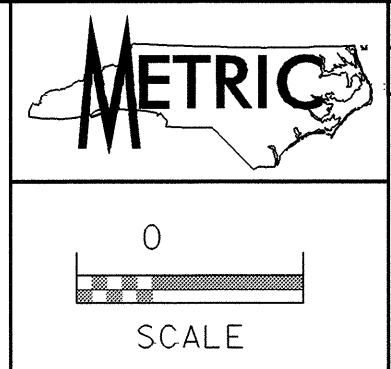


042927



PROJECT REFERENCE NO. SHEET NO.

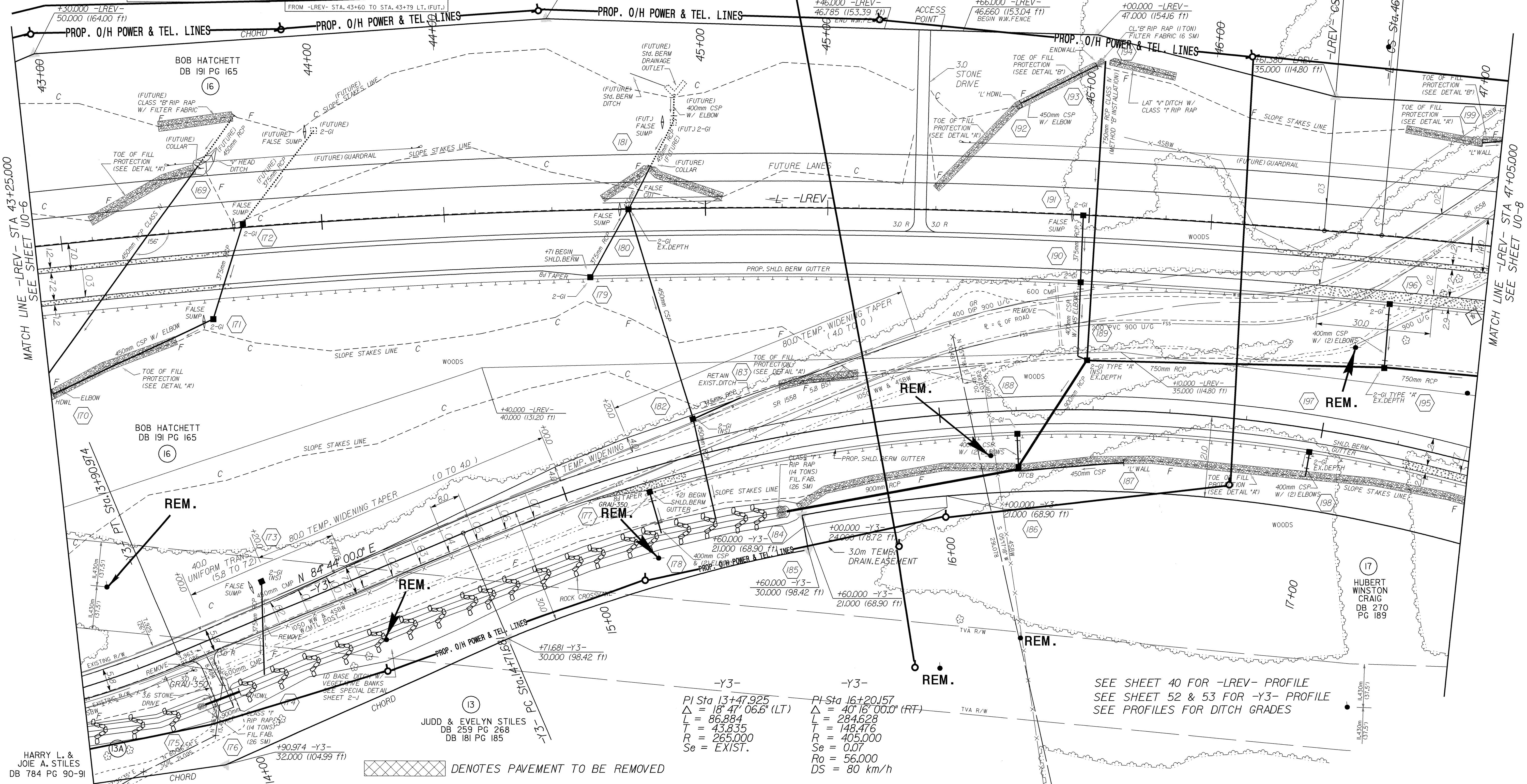
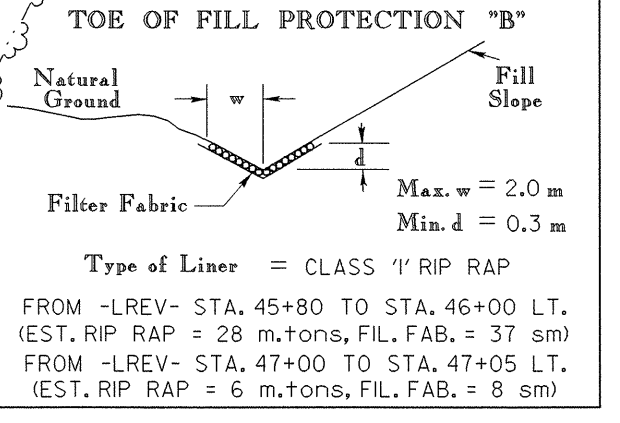
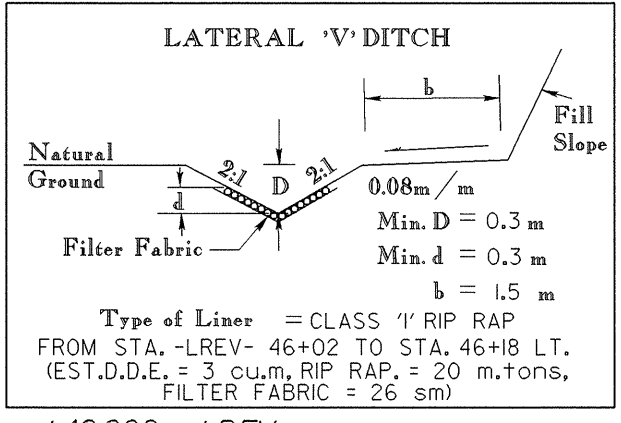
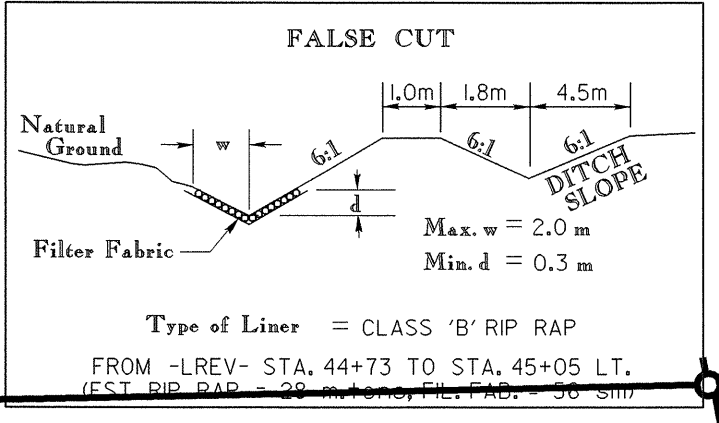
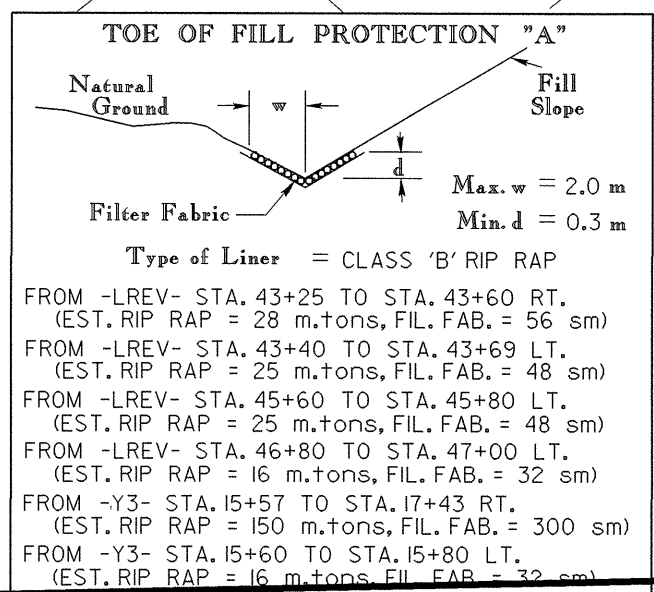
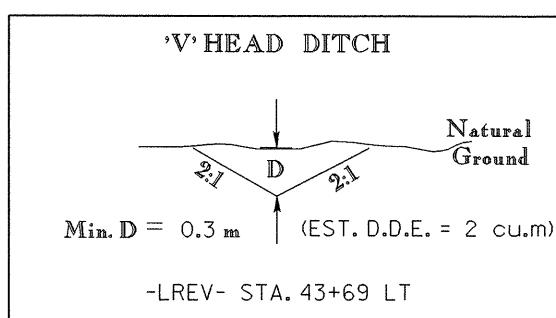
R-0977A UO-7

UTILITIES BY OTHERS

NOTE: ALL PROPOSED UTILITY WORK SHOWN ON THIS SHEET WILL BE DONE BY OTHERS

NOTE: GRADE ULTIMATE SECTION FROM -LREV- STA. 45+80' TO 47+60'

PIs Sta 37+34.020 $\Delta = 0' 58' 56.0''$ $L_s = 60.000$ $LT = 40.001$ $ST = 20.001$
 PIs Sta 42+09.117 $\Delta = 29' 09' 16.1''$ (RT) $L = 890.472$ $T = 455.098$ $R = 1,750.800$
 PIs Sta 46+64.493 $\Delta = 0' 58' 56.0''$ $L_s = 60.000$ $LT = 40.001$ $ST = 20.001$
 PIs Sta 37+70.910 $\Delta = 1' 28' 24.0''$ $L = 90.000$ $LT = 60.002$ $ST = 30.002$
 PIs Sta 42+40.027 $\Delta = 28' 10' 20.1''$ (RT) $L = 860.472$ $T = 439.119$ $R = 1,750.000$ $Se = 0.03$ $DS = 100$ km/h
 PIs Sta 46+91.382 $\Delta = 1' 28' 24.0''$ $L_s = 90.000$ $LT = 60.002$ $ST = 30.002$



BOB HATCHETT DB 191 PG 165

BOB HATCHETT DB 191 PG 165

JUDD & EVELYN STILES DB 259 PG 268 DB 181 PG 185

HUBERT WINSTON CRAIG DB 270 PG 189

PIs Sta 13+47.925 $\Delta = 18' 47' 06.6''$ (LT) $L = 86.884$ $T = 43.835$ $R = 265.000$ $Se = EXIST.$
 PIs Sta 16+20.157 $\Delta = 40' 16' 00.0''$ (RT) $L = 284.628$ $T = 148.476$ $R = 405.000$ $Se = 0.07$ $Ro = 56.000$ $DS = 80$ km/h

SEE SHEET 40 FOR -LREV- PROFILE
SEE SHEET 52 & 53 FOR -Y3- PROFILE
SEE PROFILES FOR DITCH GRADES

DENOTES PAVEMENT TO BE REMOVED

HARRY L. & JOIE A. STILES DB 784 PG 90-91

19-NOV-2004 09:25 89977.RDV_PSH3.UO.7.dgn