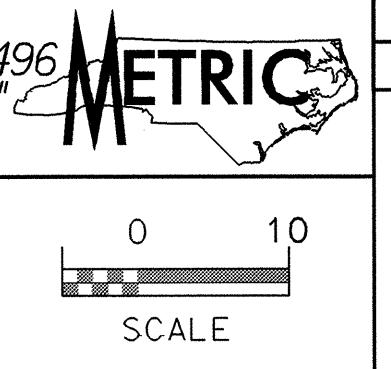


REVISIONS

RICHARD & MARY ALICE McCOY DB 500 PG 146

Pls Sta 75+35.795 Δ = 2° 12' 47.3" Ls = 90.000 Lt = 60.005 ST = 30.004 DS = 105 km/h



NOTE: ALL PROPOSED UTILITY WORK SHOWN ON THIS SHEET WILL BE DONE BY OTHERS

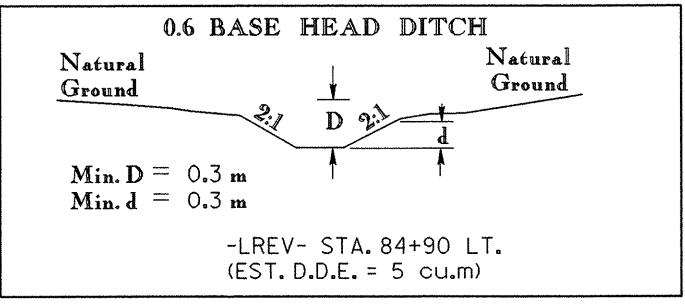
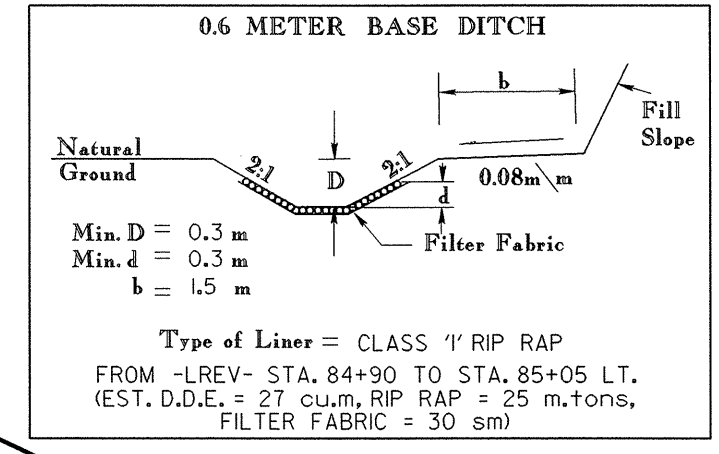
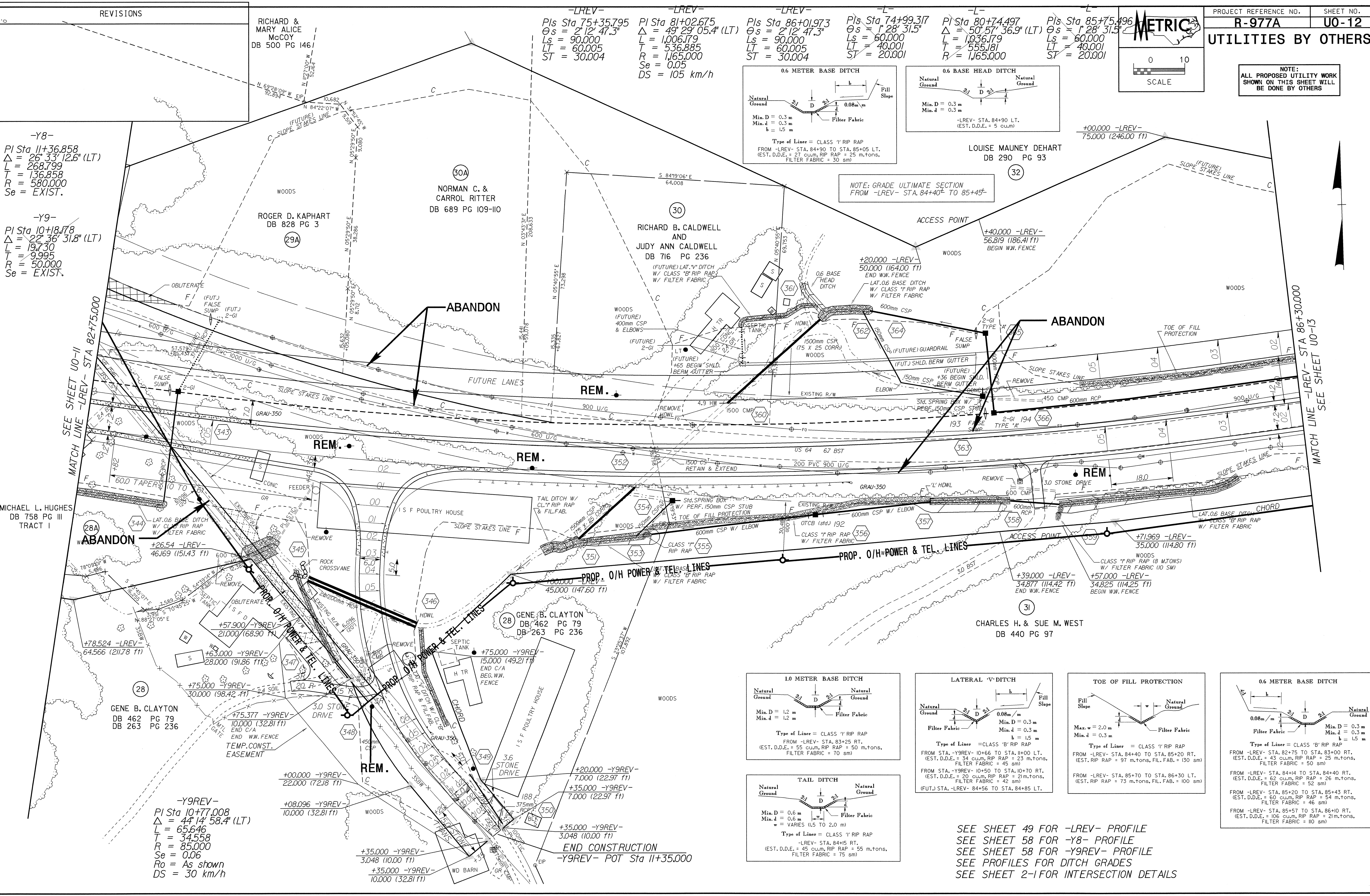
-Y8- Pls Sta 11+36.858 Δ = 26° 33' 12.6" (LT) L = 268.799 T = 136.858 R = 580.000 Se = EXIST.

-Y9- Pls Sta 10+18.178 Δ = 22° 36' 31.8" (LT) L = 197.30 T = 9.995 R = 50.000 Se = EXIST.

MICHAEL L. HUGHES DB 758 PG III TRACT I

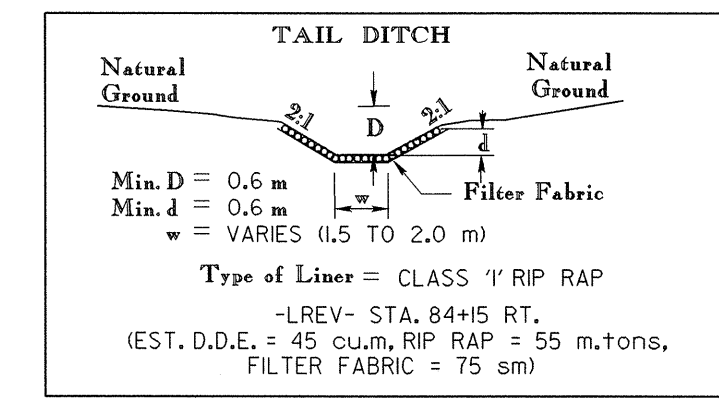
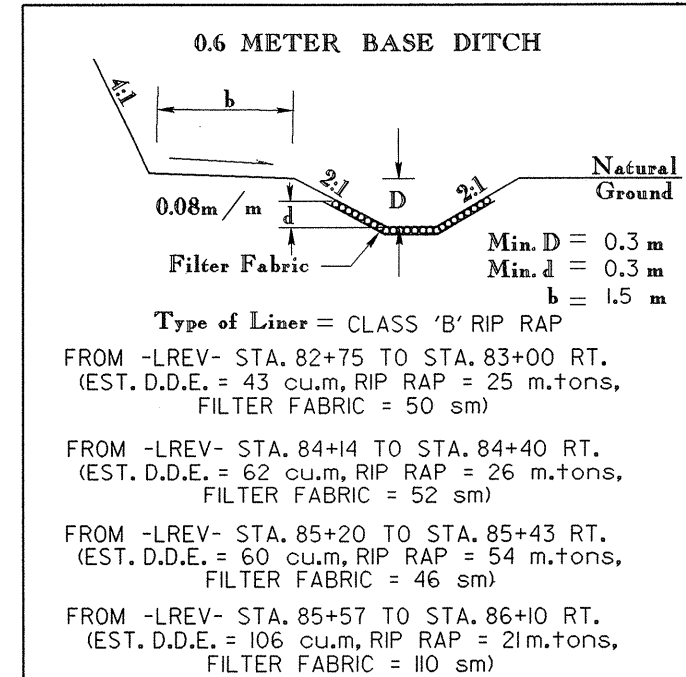
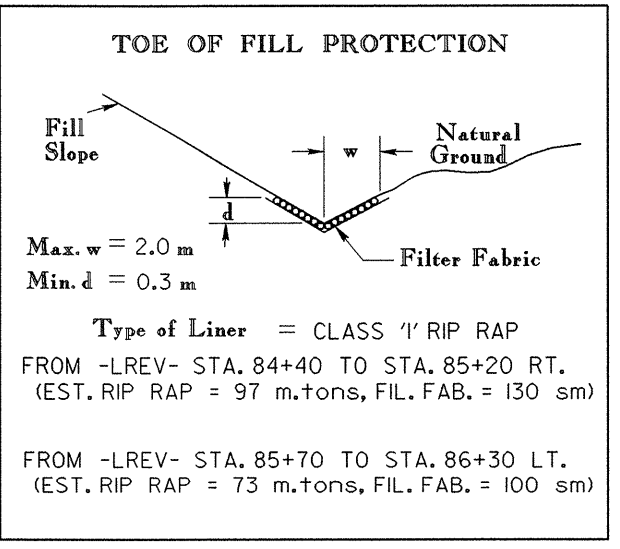
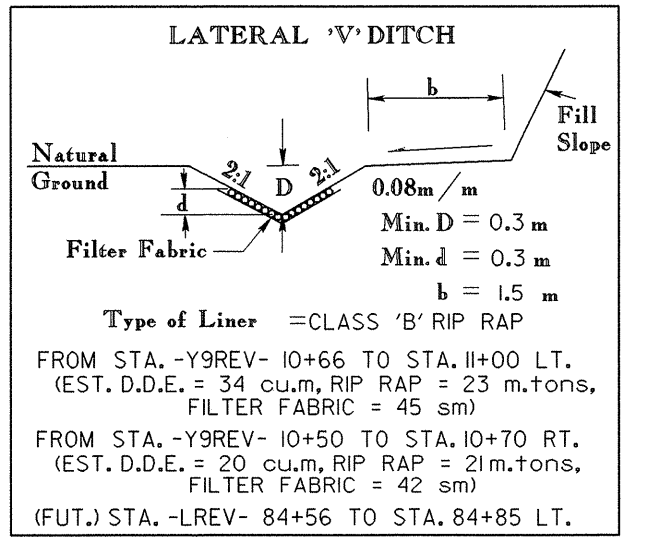
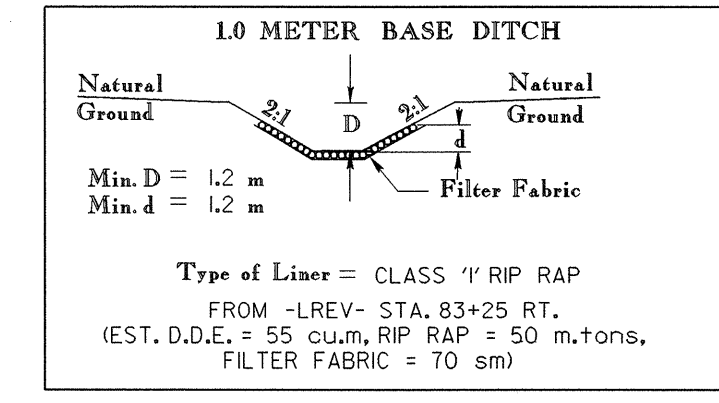
SEE SHEET U0-11 MATCH LINE -LREV- STA 82+75.000

MATCH LINE -LREV- STA 86+30.000 SEE SHEET U0-13



NOTE: GRADE ULTIMATE SECTION FROM -LREV- STA. 84+40 TO 85+45

LOUISE MAUNEY DEHART DB 290 PG 93



SEE SHEET 49 FOR -LREV- PROFILE SEE SHEET 58 FOR -Y8- PROFILE SEE SHEET 58 FOR -Y9REV- PROFILE SEE PROFILES FOR DITCH GRADES SEE SHEET 2-1 FOR INTERSECTION DETAILS

-Y9REV- Pls Sta 10+77.008 Δ = 44° 14' 58.4" (LT) L = 65.646 T = 34.558 R = 85.000 Se = 0.06 Ro = As shown DS = 30 km/h

END CONSTRUCTION -Y9REV- POT Sta 11+35.000