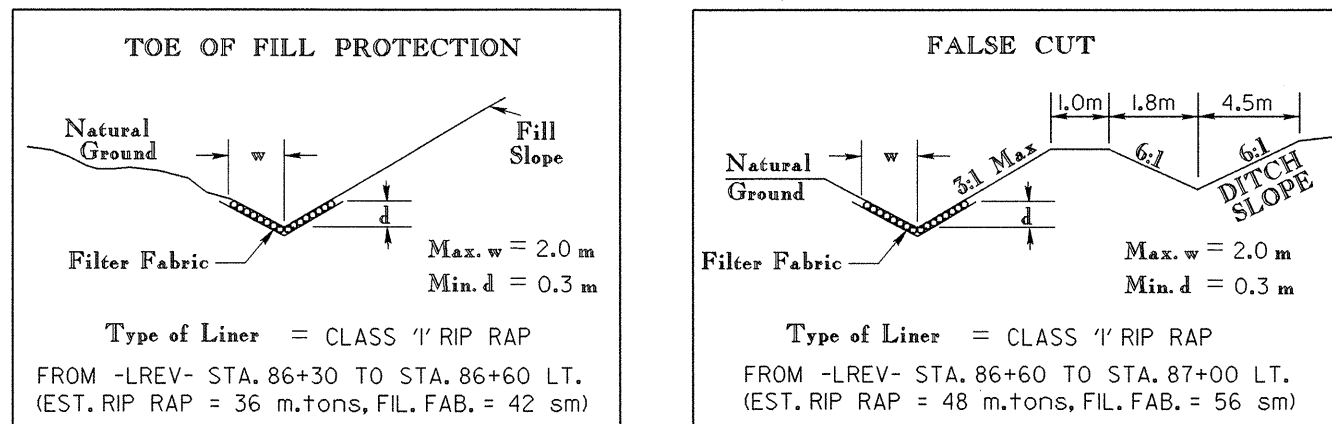


NOTE:
 ALL PROPOSED UTILITY WORK
 SHOWN ON THIS SHEET WILL
 BE DONE BY OTHERS



WILLIAM J. WELLS
 CHARLES H. WEST
 DB 292 PG 164

LOUISE MAUNEY DEHART
 DB 290 PG 93

D.L. WELLS JR.
 DB 532 PG 119

WILLIAM J. WELLS
 CHARLES H. WEST
 DB 292 PG 164

CHARLES H. & SUE M. WEST
 DB 440 PG 97

-LREV-
 PIs Sta 75+35.795
 $\theta_s = 2^\circ 12' 47.3''$
 Ls = 90.000
 LT = 60.005
 ST = 30.004

-LREV-
 PIs Sta 81+02.675
 $\Delta = 49^\circ 29' 05.4''$ (LT)
 L = 1,006.179
 T = 536.885
 R = 1,165.000
 Se = 0.05
 DS = 105 km/h

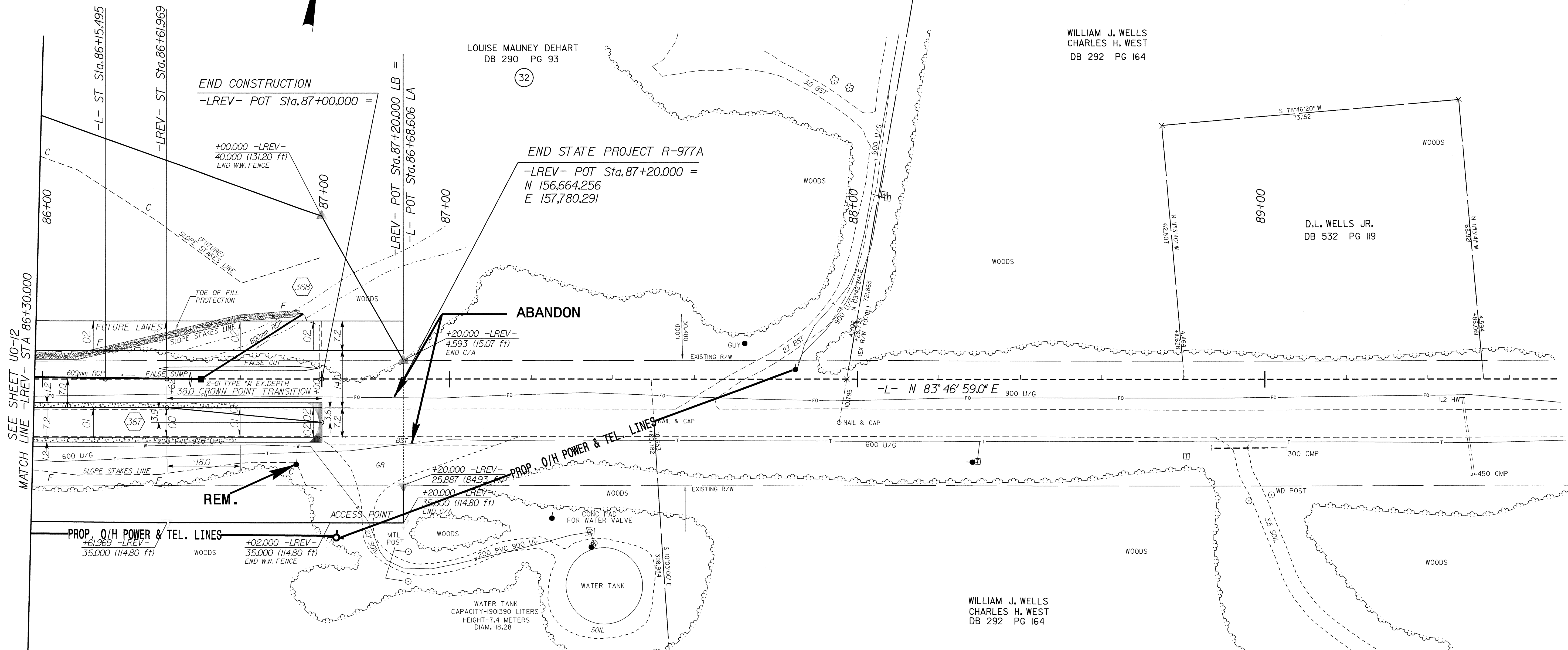
-L-
 PIs Sta 86+01.973
 $\theta_s = 2^\circ 12' 47.3''$
 Ls = 90.000
 LT = 60.005
 ST = 30.004

-L-
 PIs Sta 74+99.317
 $\theta_s = 1^\circ 28' 31.5''$
 Ls = 60.000
 LT = 40.001
 ST = 20.001

-L-
 PIs Sta 80+74.497
 $\Delta = 50^\circ 57' 36.9''$ (LT)
 L = 1,036.179
 T = 555.181
 R = 1,165.000

-L-
 PIs Sta 85+75.496
 $\theta_s = 1^\circ 28' 31.5''$
 Ls = 60.000
 LT = 40.001
 ST = 20.001

SEE SHEET 50 FOR -LREV- PROFILE
 SEE PROFILES FOR DITCH GRADES



04/25/23
 08-NOV-2004 11:23
 R:\U0-13\11-80977-RD\PSH25-U0-13.dwg
 PSH25