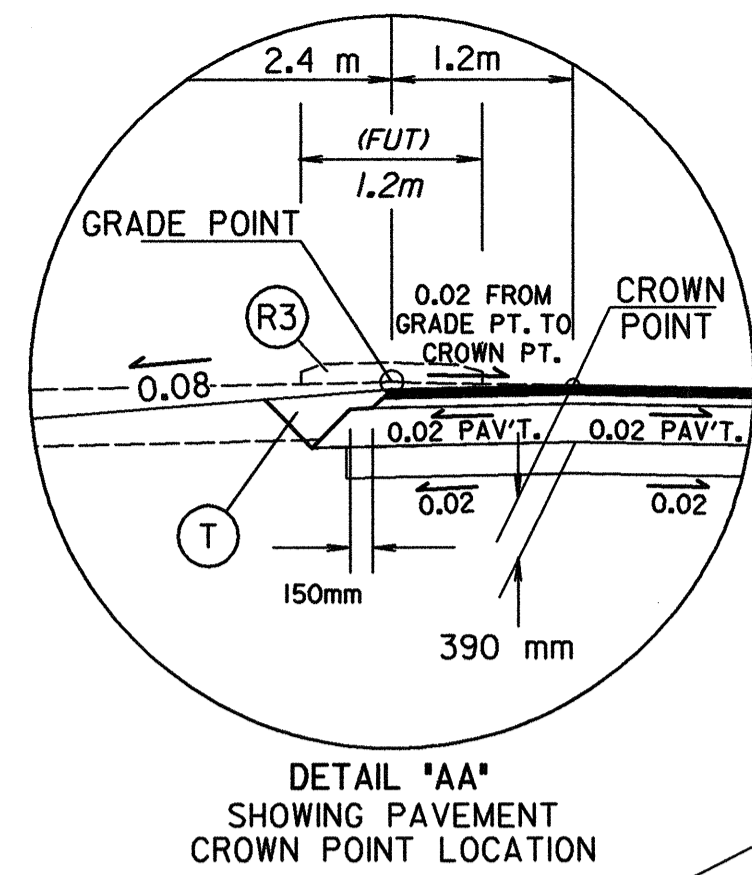
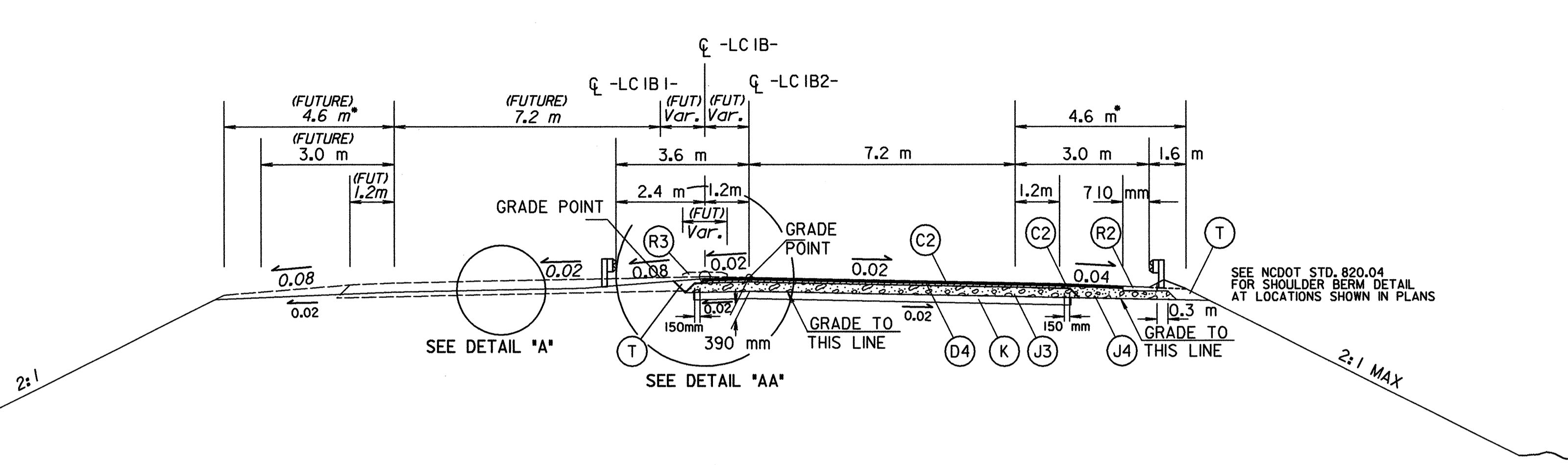


(C1)	30mm S9.5B
(C2)	60mm S9.5B
(C3)	VAR. S9.5B
(D1)	60mm I19.0B
(D2)	120mm I19.0B
(D3)	VAR. I19.0B
(D4)	80mm I19.0B
(D5)	90mm I19.0B
(E1)	80mm B25.0B
(E2)	100mm B25.0B
(E3)	120mm B25.0B
(E4)	150mm B25.0B
(E5)	160mm B25.0B
(E6)	200mm B25.0B
(E7)	220mm B25.0B
(E8)	260mm B25.0B
(E9)	VAR. B25.0B
(U1)	150mm ABC
(U2)	200mm ABC
(U3)	250mm ABC
(U4)	VAR. ABC
(K)	200mm LIME SUBBASE (OR)
(K)	180mm CEMENT SUBBASE (OR)
(K)	180mm AGG./CEM SUBBASE
(P)	PRIME COAT
(R1)	750mm CURB & GUTTER
(R2)	SHOULDER BERM GUTTER
(R3)	125mm MON. ISLAND
(T)	EARTH MATERIAL
(U)	EXIST. PAVEMENT
(W)	ASPH. WEDGING



DETAIL 'AA'
SHOWING PAVEMENT
CROWN POINT LOCATION

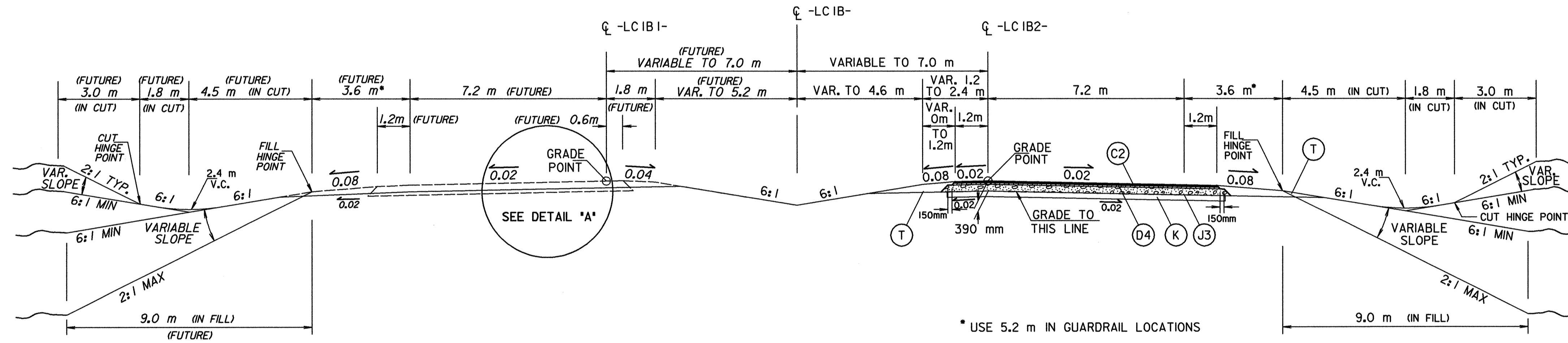


* USE 4.6 m IN GUARDRAIL LOCATIONS

TYPICAL SECTION NO. 5

USE TYPICAL SECTION NO. 5 AS FOLLOWS:

- LCIB- STA 17+60.914 TO 18+10.552
- LCIB1- STA 17+60.914 TO 18+11.675
- LCIB2- STA 17+60.914 TO 18+09.550

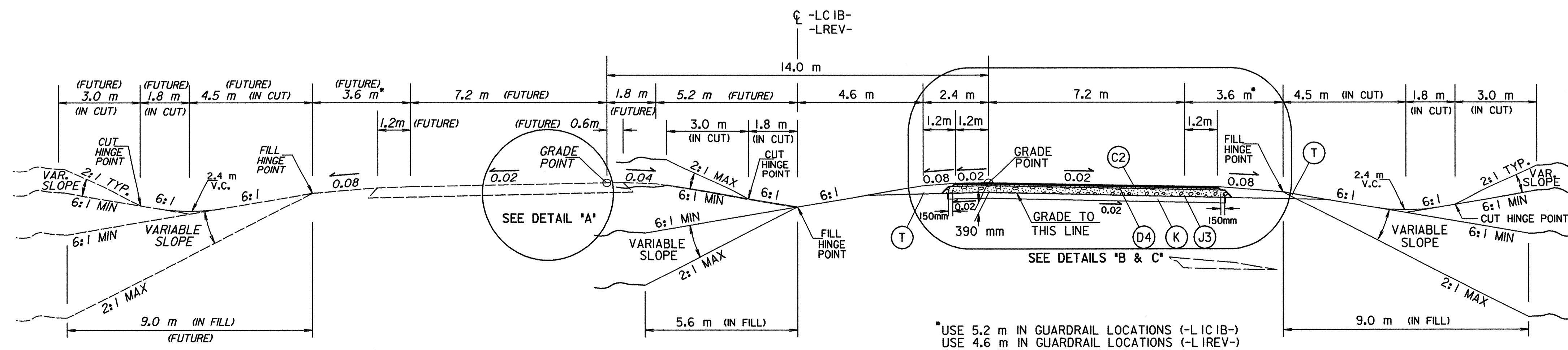


* USE 5.2 m IN GUARDRAIL LOCATIONS

TYPICAL SECTION NO. 6

USE TYPICAL SECTION NO. 6 AS FOLLOWS:

- LCIB- STA 18+56.033 TO 22+23.716
- LCIB1- STA 18+57.227 TO 22+19.546
- LCIB2- STA 18+54.950 TO 22+27.886



* USE 5.2 m IN GUARDRAIL LOCATIONS (-L ICIB-)
* USE 4.6 m IN GUARDRAIL LOCATIONS (-L LREV-)

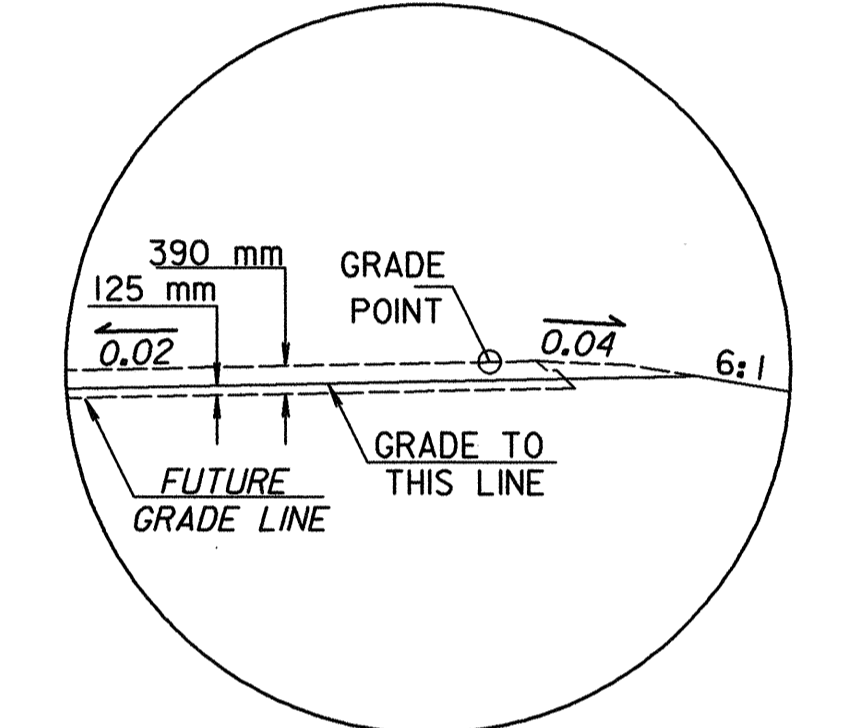
TYPICAL SECTION NO. 7

USE TYPICAL SECTION NO. 7 AS FOLLOWS:

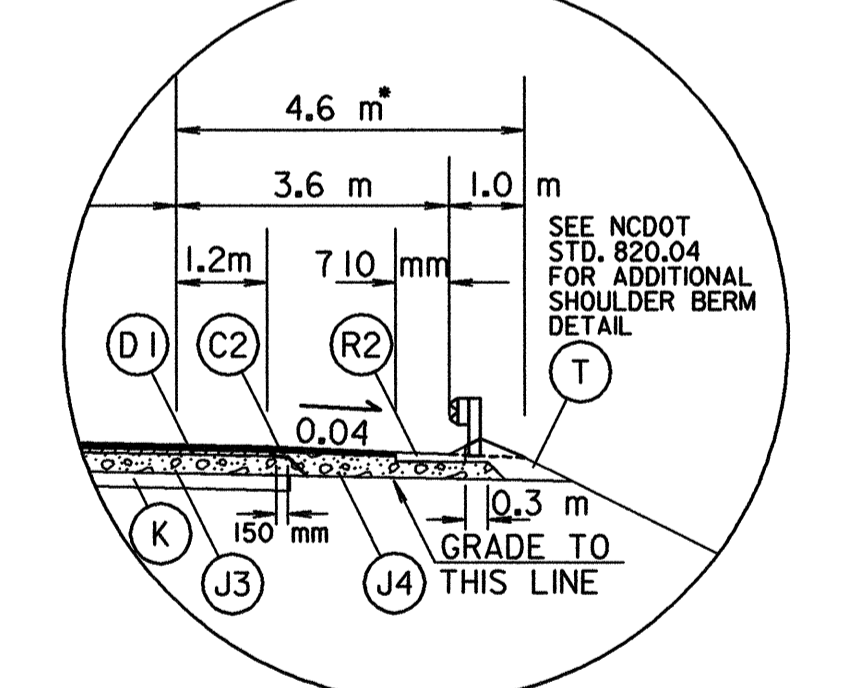
- LCIB- STA 22+23.716 TO 23+81.041
- LCIB- STA 25+48.042 TO 25+77.129
- LREV- STA 25+20.000 TO 40+63.931
- LREV- STA 41+89.545 TO 67+55.998
- LREV- STA 69+65.998 TO 84+30.000

METRIC
CONSTR. REV.
R/W REV.

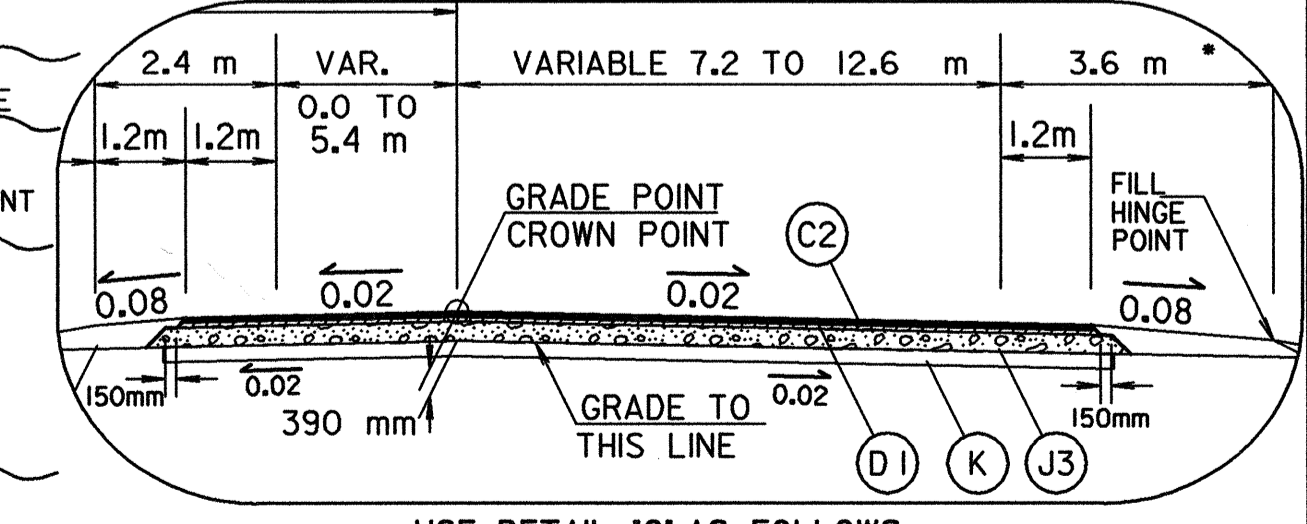
PROJECT REFERENCE NO.	R-977A	SHEET NO.	2-B
ROADWAY DESIGN ENGINEER		STATE PAVEMENT DESIGN ENGINEER	



USE DETAIL 'A' AS FOLLOWS:
-LCIB- AT LOCATIONS LABELED ON PLANS
(WHEN GRADING FOR FUTURE
LANES OF ULTIMATE SECTION)



USE DETAIL 'B' AS FOLLOWS:
-LREV- AT SHOULDER BERM LOCATIONS
AS LABELED ON PLANS



USE DETAIL 'C' AS FOLLOWS:
-LREV- AT LOCATIONS OF TURN-LANES
(WIDEN AS SHOWN IN PLANS)

LOCHNER
H. W. LOCHNER, INC.
2840 PLAZA PLACE, SUITE 202
RALEIGH, NC 27612