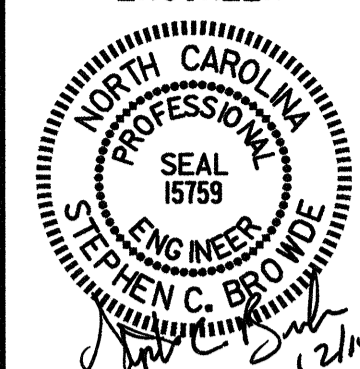


REVISIONS



PROJECT REFERENCE NO. R-977A SHEET NO. 2-H

HIGHWAY DESIGN ENGINEER



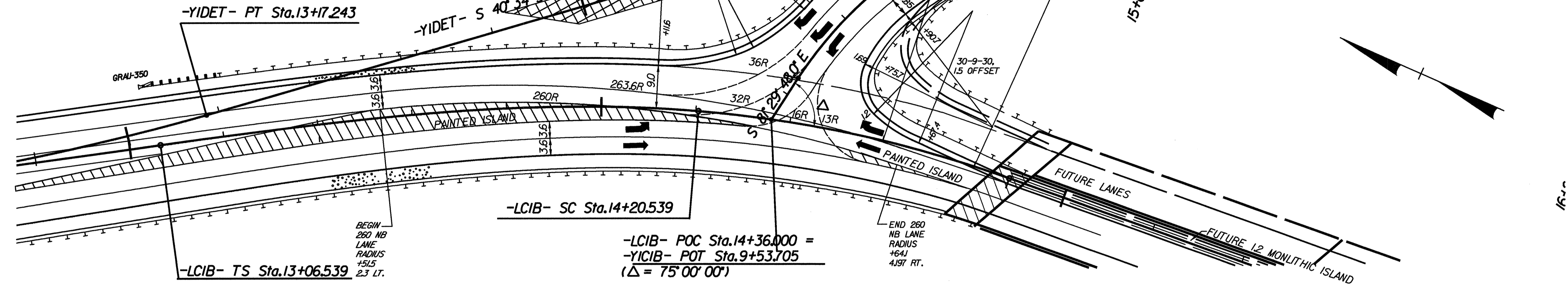
CONST. REV.

R/W REV.

LOCHNER

H. W. LOCHNER, INC.
2840 PLAZA PLACE, SUITE 202
RALEIGH, NC 27612

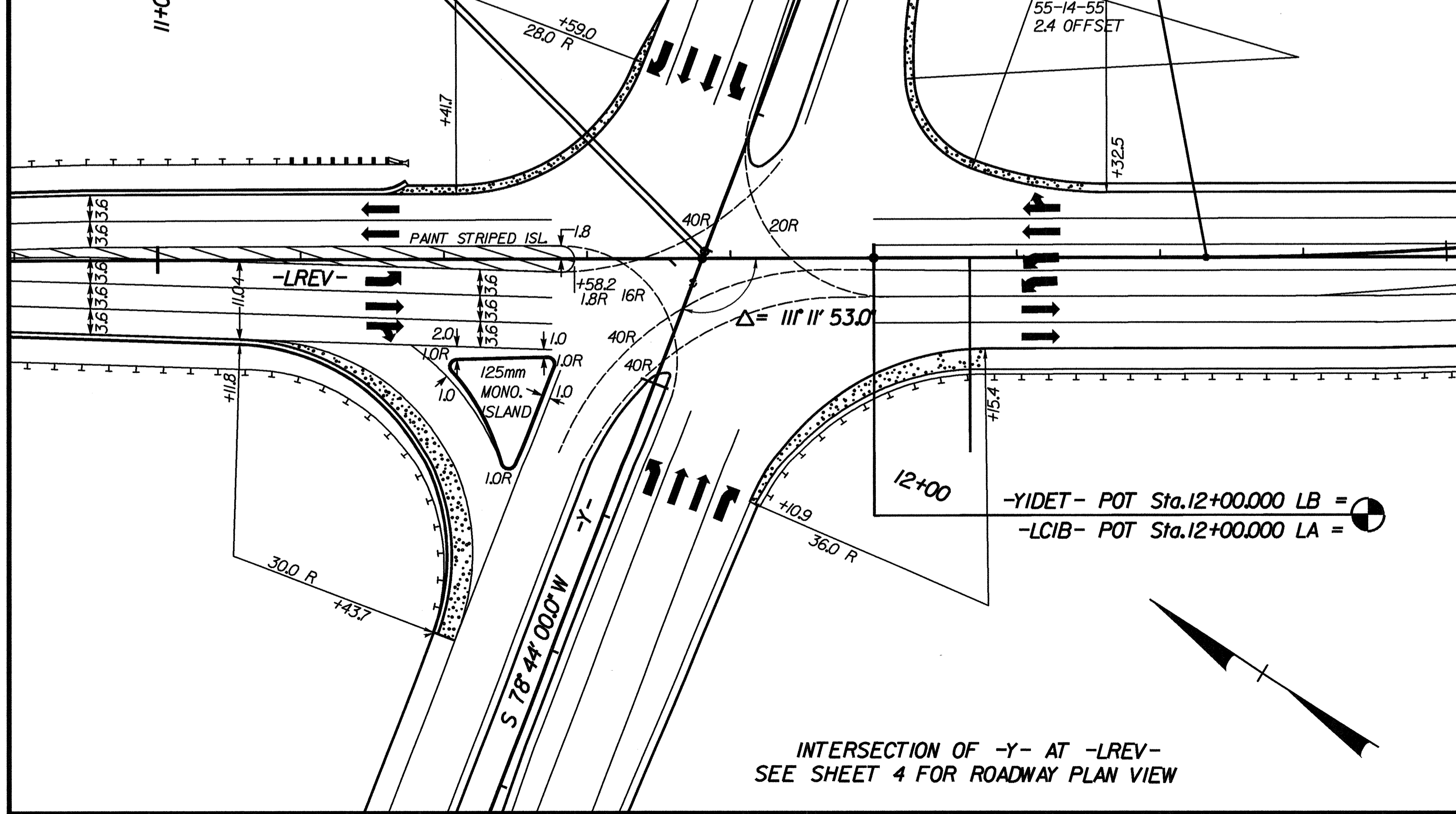
INTERSECTION OF -YICIB- AT -LCIB-
SEE SHEET 5 FOR ROADWAY PLAN VIEW



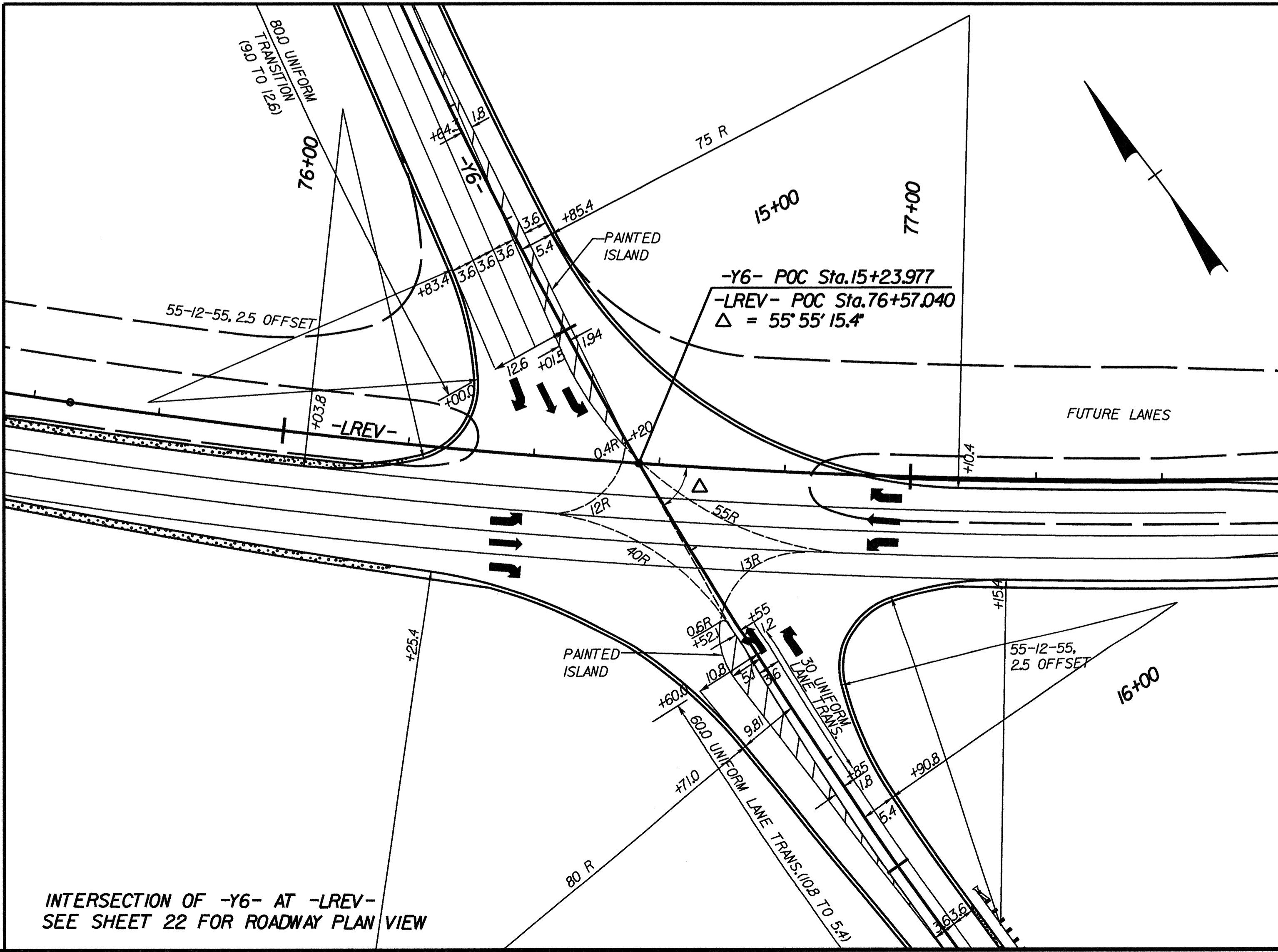
-Y- ST Sta.11+80.324

-LCIB- POT Sta.11+76.050 =

-Y- POT Sta.11+81.353



INTERSECTION OF -Y- AT -LREV-
SEE SHEET 4 FOR ROADWAY PLAN VIEW



INTERSECTION OF -Y6- AT -LREV-
SEE SHEET 22 FOR ROADWAY PLAN VIEW