

REVISIONS

SEE SHEET 4-A FOR DITCH DETAILS

-Y-  
PI Sta 10+37.809  
Δ = 12° 19' 51.9" (RT)  
L = 75.326  
T = 37.809  
R = 350.000  
SE = EXIST.

SEE SHEET 2-H FOR INTERSECTION DETAILS  
SEE PROFILES FOR DITCH GRADES

-Y- POC Sta. 10+60.000  
BEGIN CONSTRUCTION

METRIC logo  
Scale: 5 0 10  
CONST. REV.  
R/W REV.

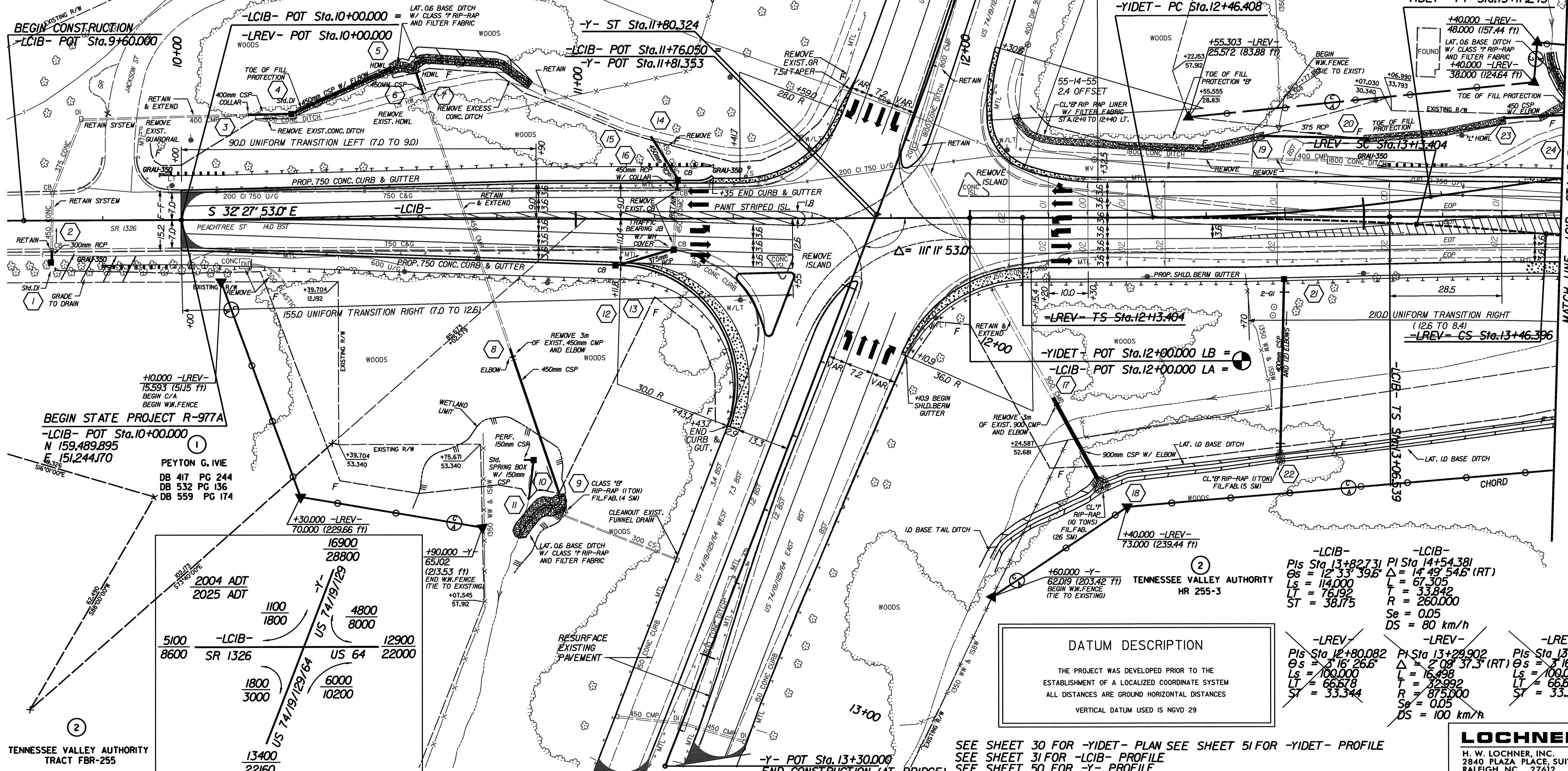
PROJECT REFERENCE NO. R-977A  
SHEET NO. 4  
HIGHWAY DESIGN ENGINEER  
HYDRAULICS ENGINEER  
Professional Engineer seals for Stephen C. Brodwin and Stephen B. Dickey.

RIGHT OF WAY PLAN SHEETS 4 AND 5

NOTE: -Y- LINE EXISTING PAVEMENT TO BE RESURFACED WITH 30MM S9.5B

-YIDET-  
PI Sta 12+81.885  
Δ = 8° 07' 01.3" (LT)  
L = 70.834  
T = 35.477  
R = 500.000  
Se = 0.06

STEPHEN B. DICKEY  
DB 563 PG 21  
3A



BEGIN STATE PROJECT R-977A  
-LCIB- POT Sta. 10+00.000  
N 159,489,895  
E 151,244,170  
PEYTON G. IVIE  
DB 417 PG 244  
DB 532 PG 136  
DB 559 PG 174

DATUM DESCRIPTION  
THE PROJECT WAS DEVELOPED PRIOR TO THE ESTABLISHMENT OF A LOCALIZED COORDINATE SYSTEM  
ALL DISTANCES ARE GROUND HORIZONTAL DISTANCES  
VERTICAL DATUM USED IS NGVD 29

-LCIB-  
PIs Sta 13+82.731  
Δs = 12° 33' 39.6"  
Ls = 114.000  
LT = 76.192  
ST = 38.175

-LCIB-  
PI Sta 14+54.381  
Δ = 14° 49' 54.6" (RT)  
L = 67.305  
T = 33.842  
R = 260.000  
Se = 0.05  
DS = 80 km/h

-LREV-  
PIs Sta 12+80.082  
Δs = 5° 16' 26.6"  
Ls = 100.000  
LT = 66.678  
ST = 33.344

-LREV-  
PI Sta 13+29.902  
Δ = 2° 09' 37.3" (RT)  
L = 16.498  
T = 32.992  
R = 875.000  
Se = 0.05  
DS = 100 km/h

-LREV-  
PIs Sta 13+79.740  
Δs = 3° 16' 26.6"  
Ls = 100.000  
LT = 66.678  
ST = 33.344

SEE SHEET 30 FOR -YIDET- PLAN SEE SHEET 51 FOR -YIDET- PROFILE  
SEE SHEET 31 FOR -LCIB- PROFILE  
SEE SHEET 50 FOR -Y- PROFILE

LOCHNER  
H. W. LOCHNER, INC.  
2840 PLAZA PLACE, SUITE 202  
RALEIGH, NC 27612