

**METRIC**

PROJECT REFERENCE NO. R-977A SHEET NO. 5

HIGHWAY DESIGN ENGINEER  
HYDRAULICS ENGINEER

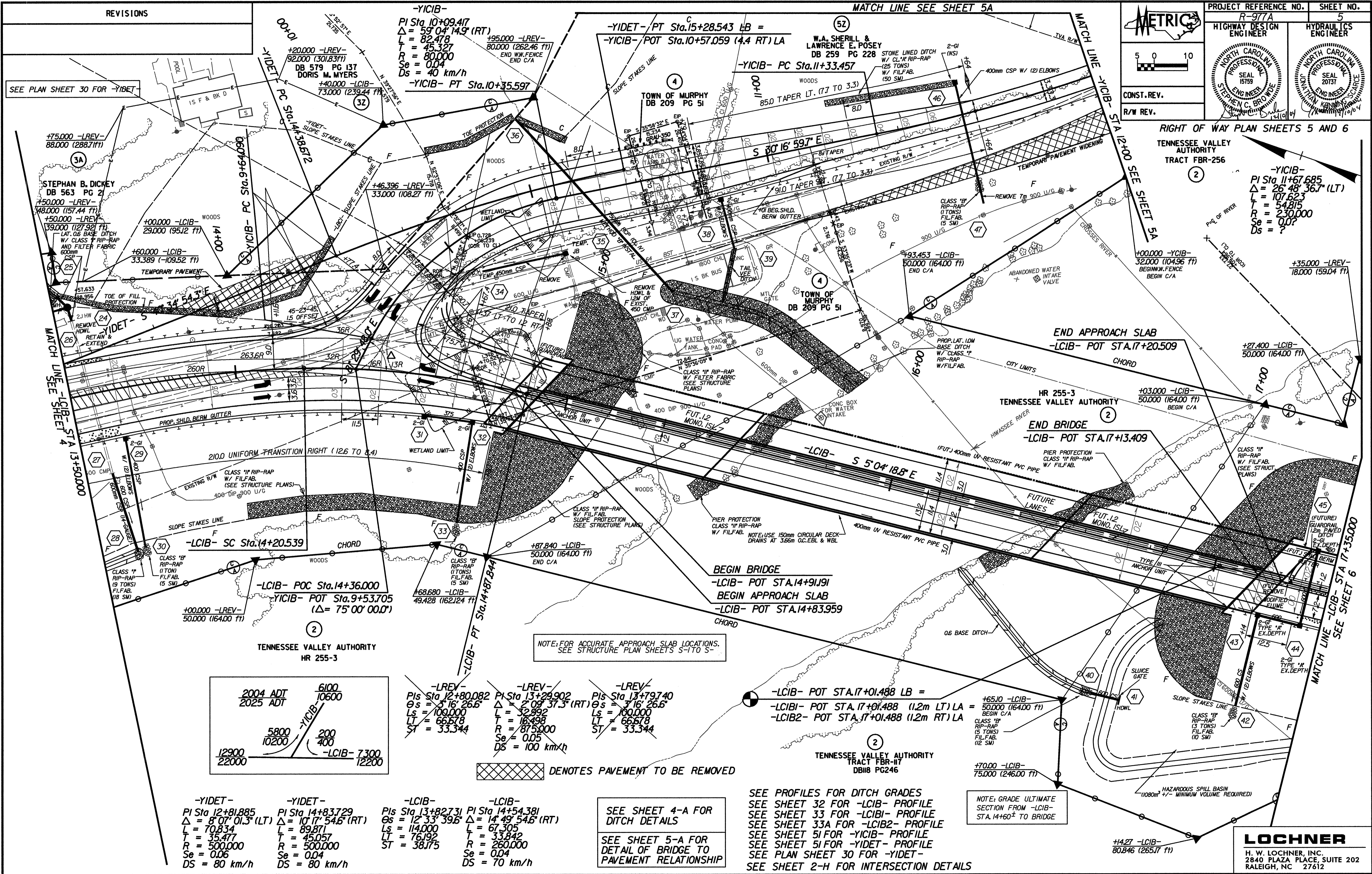
SEAL 15739  
SEAL 20137

CONST. REV.  
R/W REV.

RIGHT OF WAY PLAN SHEETS 5 AND 6

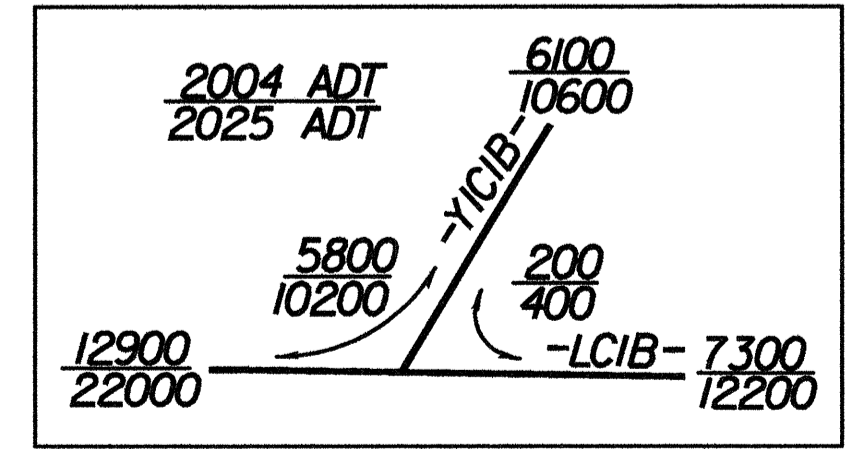
TENNESSEE VALLEY AUTHORITY  
TRACT FBR-256

5 0 10



-YICIB-  
PI Sta 11+67.685  
Δ = 26° 48' 36.7" (LT)  
L = 107.623  
T = 54.815  
R = 230.000  
Se = 0.0?  
Ds = ?

-YIDET- PI Sta 12+81.885 Δ = 8° 07' 01.3" (LT) L = 70.834 T = 35.477 R = 500.000 Se = 0.06 Ds = 80 km/h	-YIDET- PI Sta 14+83.729 Δ = 10° 17' 54.6" (RT) L = 89.871 T = 45.057 R = 500.000 Se = 0.04 Ds = 80 km/h	-LCIB- PIs Sta 13+82.731 θs = 12° 33' 39.6" Ls = 114.000 LT = 76.192 ST = 38.175	-LCIB- PI Sta 14+54.381 Δ = 14° 49' 54.6" (RT) L = 67.305 T = 33.842 R = 260.000 Se = 0.04 Ds = 70 km/h
--	---	---	--



NOTE: FOR ACCURATE APPROACH SLAB LOCATIONS, SEE STRUCTURE PLAN SHEETS S-1 TO S-5

☒ DENOTES PAVEMENT TO BE REMOVED

SEE SHEET 4-A FOR DITCH DETAILS

SEE SHEET 5-A FOR DETAIL OF BRIDGE TO PAVEMENT RELATIONSHIP

SEE PROFILES FOR DITCH GRADES  
SEE SHEET 32 FOR -LCIB- PROFILE  
SEE SHEET 33 FOR -LCIB1- PROFILE  
SEE SHEET 33A FOR -LCIB2- PROFILE  
SEE SHEET 5I FOR -YICIB- PROFILE  
SEE SHEET 5I FOR -YIDET- PROFILE  
SEE PLAN SHEET 30 FOR -YIDET-  
SEE SHEET 2-H FOR INTERSECTION DETAILS

NOTE: GRADE ULTIMATE SECTION FROM -LCIB- STA. 14+60 TO BRIDGE

**LOCHNER**

H. W. LOCHNER, INC.  
2840 PLAZA PLACE, SUITE 202  
RALEIGH, NC 27612