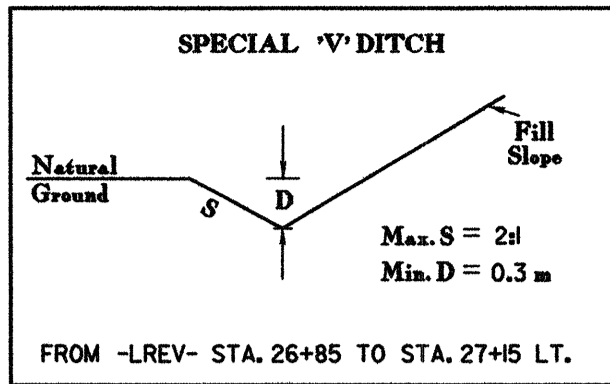


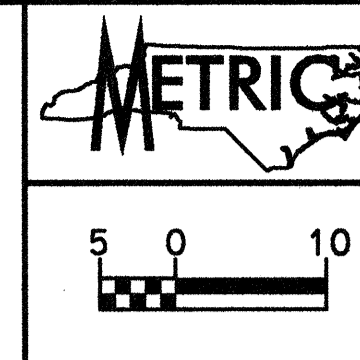
REVISIONS



-LREV-
PIs Sta 28+62.544
Os = 2' 56' 47.9"
Ls = 90.000
LT = 60.008
ST = 30.008

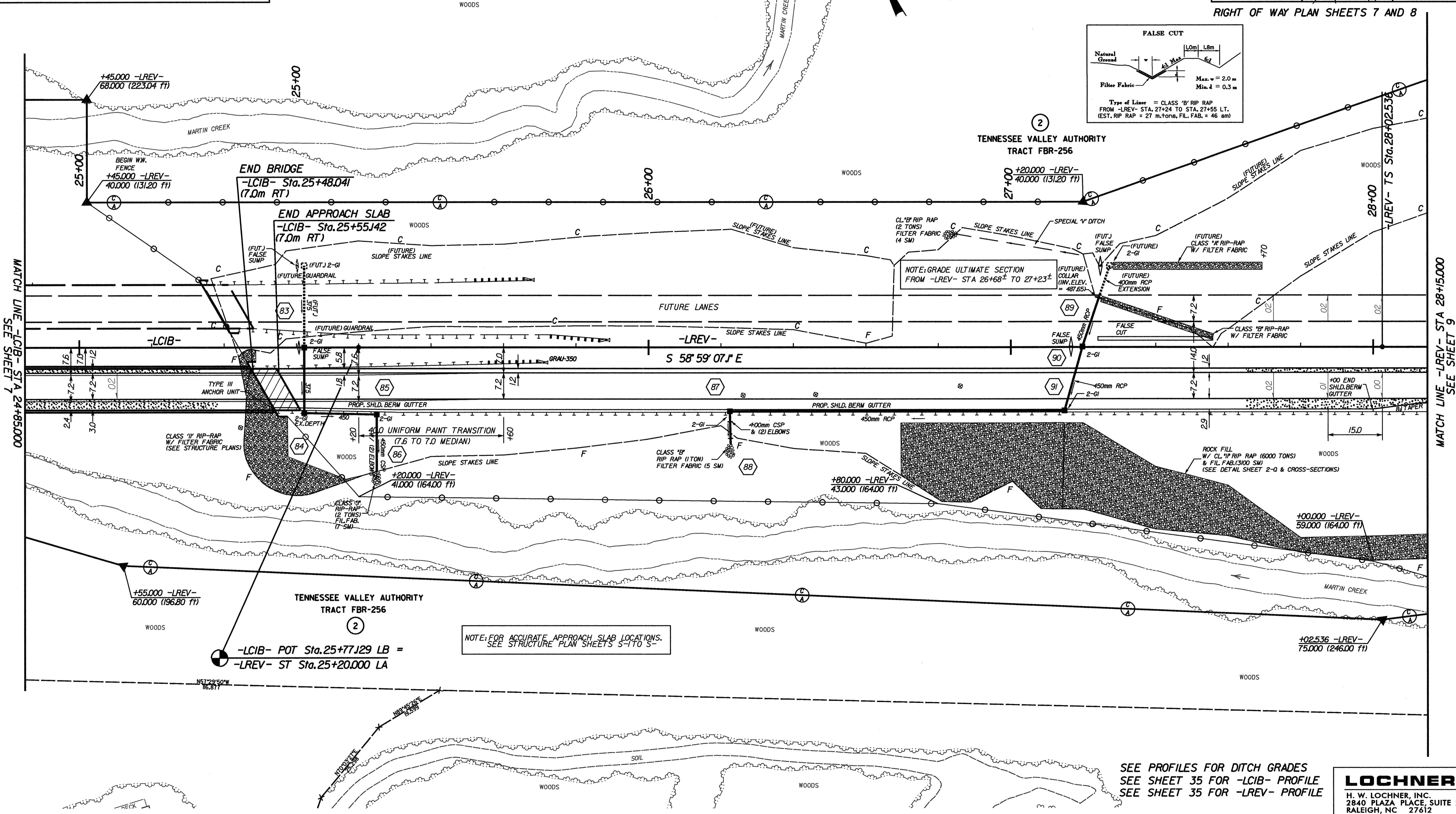
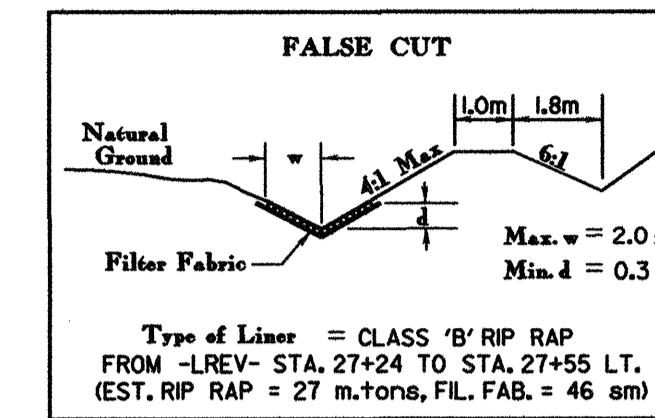
-LREV-
PI Sta 31+46.653
Δ = 32' 23' 19.1" (LT)
L = 494.627
T = 254.117
R = 875.000
Se = 0.06
DS = 105 km/h

-LREV-
PIs Sta 34+17.171
Os = 2' 56' 47.9"
Ls = 90.000
LT = 60.008
ST = 30.008



PROJECT REFERENCE NO. R-977A SHEET NO. 8
HIGHWAY DESIGN ENGINEER
HYDRAULICS ENGINEER
NORTH CAROLINA PROFESSIONAL ENGINEER SEAL 15759
NORTH CAROLINA PROFESSIONAL ENGINEER SEAL 20137
CONST. REV.
R/W REV.

RIGHT OF WAY PLAN SHEETS 7 AND 8



NOTE: FOR ACCURATE APPROACH SLAB LOCATIONS, SEE STRUCTURE PLAN SHEETS S-1 TO S-5

SEE PROFILES FOR DITCH GRADES
SEE SHEET 35 FOR -LCIB- PROFILE
SEE SHEET 35 FOR -LREV- PROFILE

LOCHNER
H. W. LOCHNER, INC.
2840 PLAZA PLACE, SUITE 202
RALEIGH, NC 27612

...:\design\040777_B01_05908.dgn 12/18/2004 2:30:39 PM