

REVISIONS

-LREV-

Pts Sta 28+62.544  
Os = 2° 56' 47.9"  
Ls = 90.000  
LT = 60.008  
ST = 30.008

-LREV-

Pi Sta 31+46.653  
Δ = 32° 23' 19.1" (LT)  
L = 494.627  
T = 254.117  
R = 875.000  
Se = 0.06  
DS = 105 km/h

-LREV-

Pts Sta 34+17.171  
Os = 2° 56' 47.9"  
Ls = 90.000  
LT = 60.008  
ST = 30.008

-L-

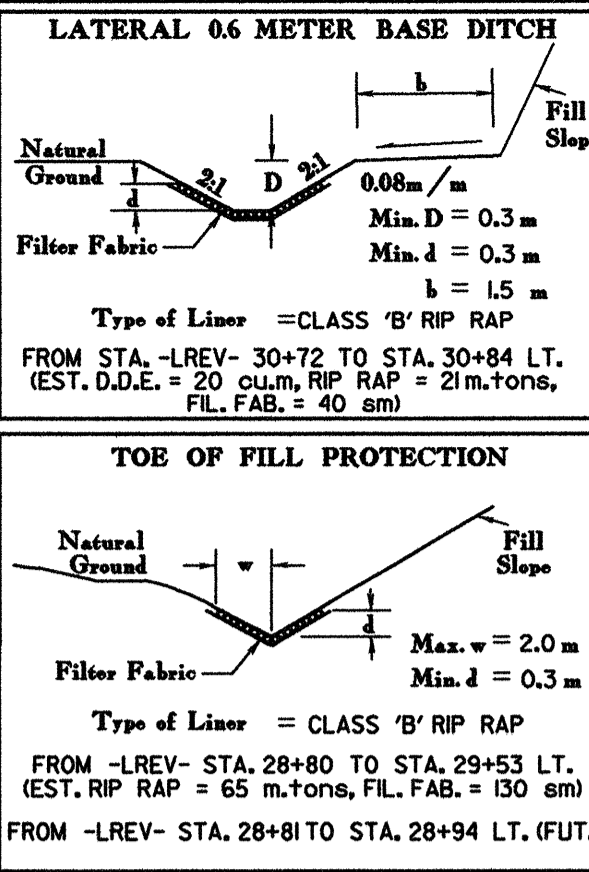
Pts Sta 28+75.548  
Os = 1° 57' 51.9"  
Ls = 60.000  
LT = 40.002  
ST = 20.002

-L-

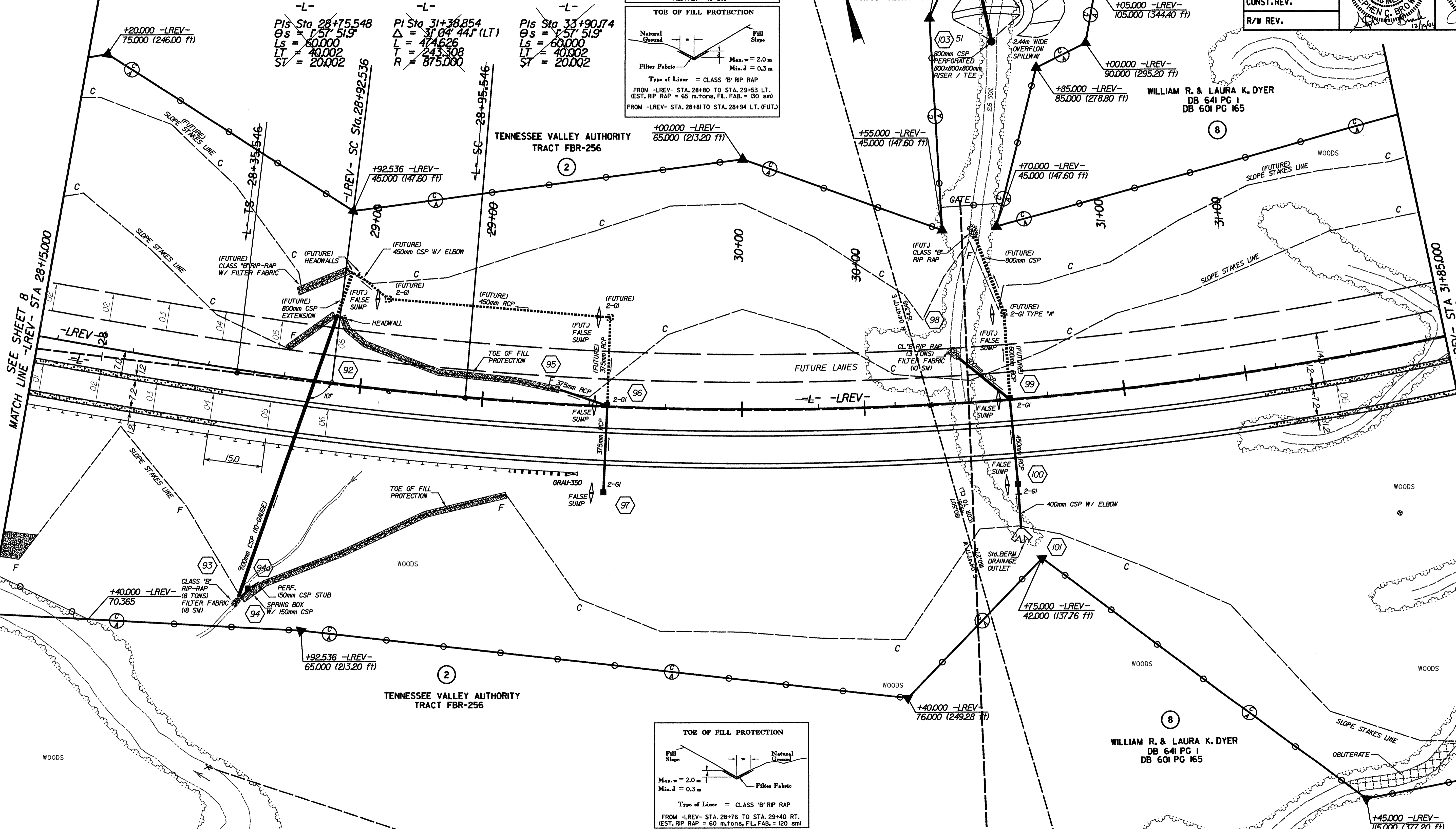
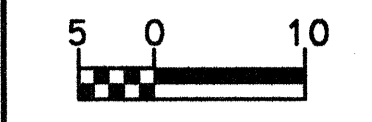
Pi Sta 31+38.854  
Δ = 31° 04' 44.1" (LT)  
L = 474.626  
T = 243.308  
R = 875.000

-L-

Pts Sta 33+90.174  
Os = 1° 57' 51.9"  
Ls = 60.000  
LT = 40.002  
ST = 20.002

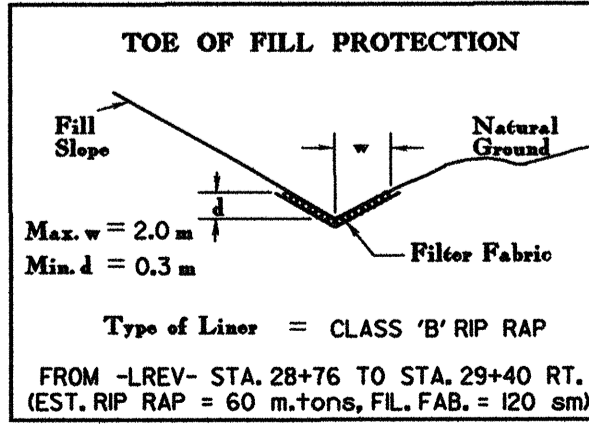


PROJECT REFERENCE NO.	R-977A	SHEET NO.	9
HIGHWAY DESIGN ENGINEER		HYDRAULICS ENGINEER	
NORTH CAROLINA PROFESSIONAL ENGINEER SEAL 15759 STEPHEN C. BROOKS		NORTH CAROLINA PROFESSIONAL ENGINEER SEAL 20737 THOMAS KENNETH SCARCE	
CONST. REV.			
R/W REV.			



SEE SHEET 8 MATCH LINE -LREV- STA 28+15,000

MATCH LINE -LREV- STA 31+85,000 SEE SHEET 10



SEE SHEET 36 FOR -LREV- PROFILE  
SEE PROFILES FOR DITCH GRADES  
SEE SHEET 2-0 FOR SPECIAL TYPE 'A' SILT BASIN DETAIL

WILLIAM R. & LAURA K. DYER  
DB 641 PG 1  
DB 601 PG 165

LOCHNER  
H. W. LOCHNER, INC.  
2840 PLAZA PLACE, SUITE 202  
RALEIGH, NC 27612