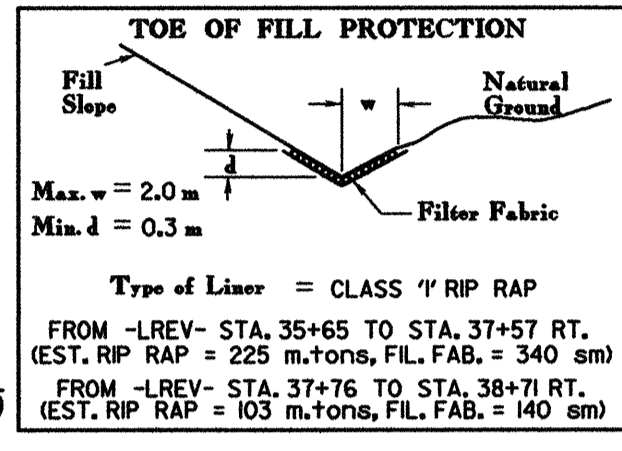
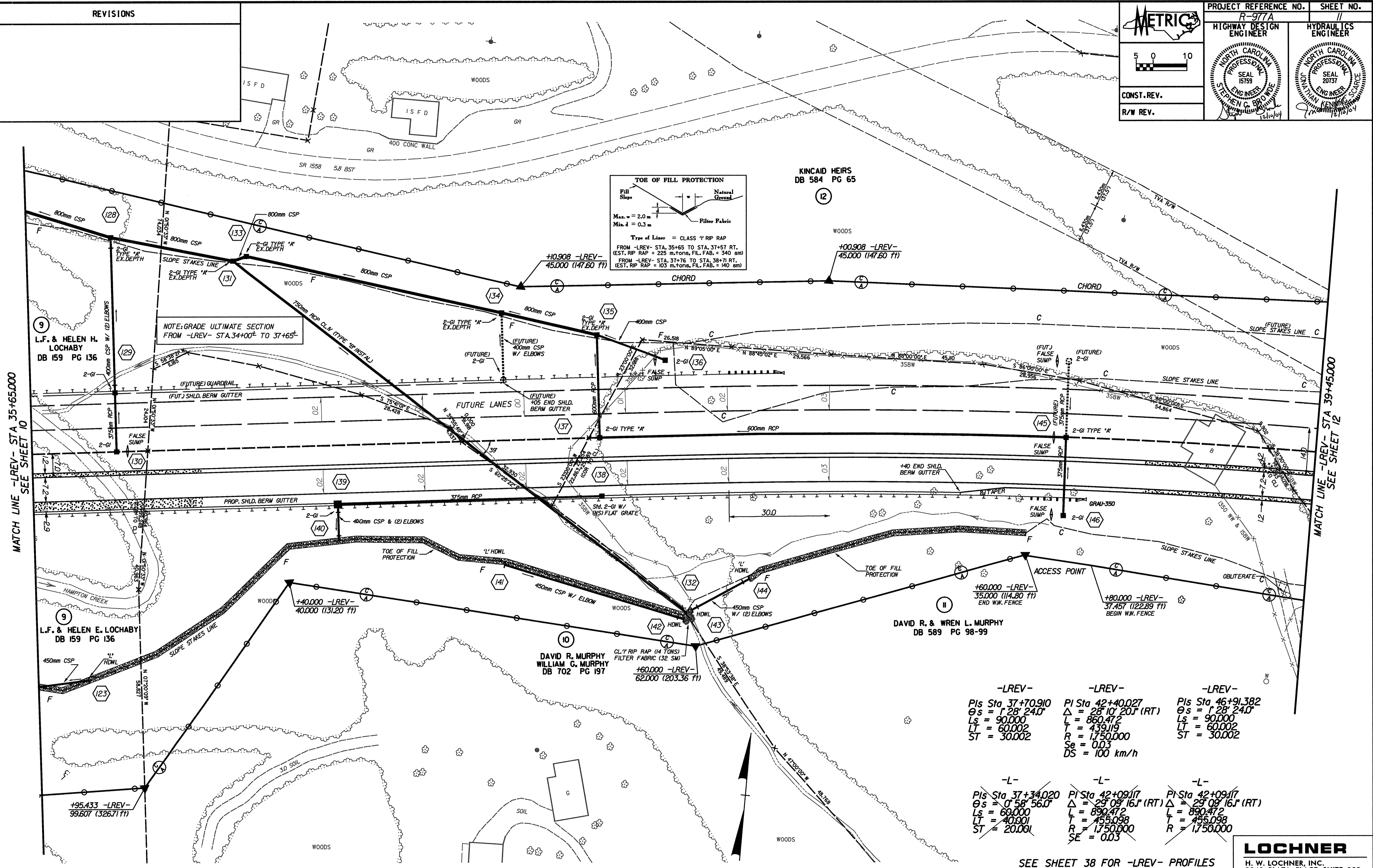
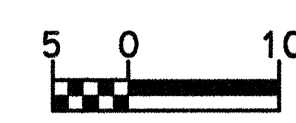


CONST. REV.
R/W REV.



NOTE: GRADE ULTIMATE SECTION FROM -LREV- STA. 34+00 TO 37+65

MATCH LINE -LREV- STA 35+65.000 SEE SHEET 10

MATCH LINE -LREV- STA 39+45.000 SEE SHEET 12

L.F. & HELEN H. LOCHABY DB 159 PG 136

L.F. & HELEN E. LOCHABY DB 159 PG 136

DAVID R. MURPHY WILLIAM G. MURPHY DB 702 PG 197

DAVID R. & WREN L. MURPHY DB 589 PG 98-99

KINCAID HEIRS DB 584 PG 65

-LREV-	-LREV-	-LREV-
Pis Sta 37+70.910	PI Sta 42+40.027	Pis Sta 46+91.382
$\theta s = 1^{\circ} 28' 24.0''$	$\Delta = 28^{\circ} 10' 20.1''$ (RT)	$\theta s = 1^{\circ} 28' 24.0''$
Ls = 90.000	L = 860.472	Ls = 90.000
LT = 60.002	T = 439.119	LT = 60.002
ST = 30.002	R = 1,750.000	ST = 30.002
	Se = 0.03	
	DS = 100 km/h	

-L-	-L-	-L-
Pis Sta 37+34.020	PI Sta 42+09.117	PI Sta 42+09.117
$\theta s = 0^{\circ} 58' 56.0''$	$\Delta = 29^{\circ} 09' 16.1''$ (RT)	$\Delta = 29^{\circ} 09' 16.1''$ (RT)
Ls = 60.000	L = 890.472	L = 890.472
LT = 40.001	T = 455.098	L = 455.098
ST = 20.001	R = 1,750.000	R = 1,750.000
	SE = 0.03	

SEE SHEET 38 FOR -LREV- PROFILES
SEE PROFILES FOR DITCH GRADES

LOCHNER
H. W. LOCHNER, INC.
2840 PLAZA PLACE, SUITE 202
RALEIGH, NC 27612

...: Design/09077_F01_P011.dgn 12/18/2004 2:18:47 PM