

REVISIONS

-L-
 PIs Sta 52+13.333
 $\theta s = 1^{\circ} 28' 31.5''$
 $L_s = 60.000$
 $LT = 40.001$
 $ST = 20.001$

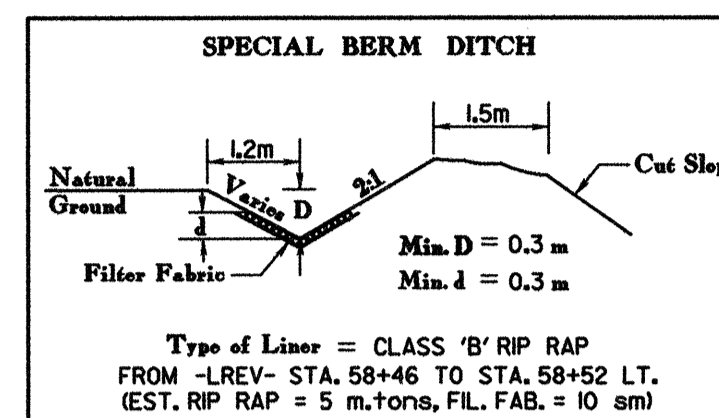
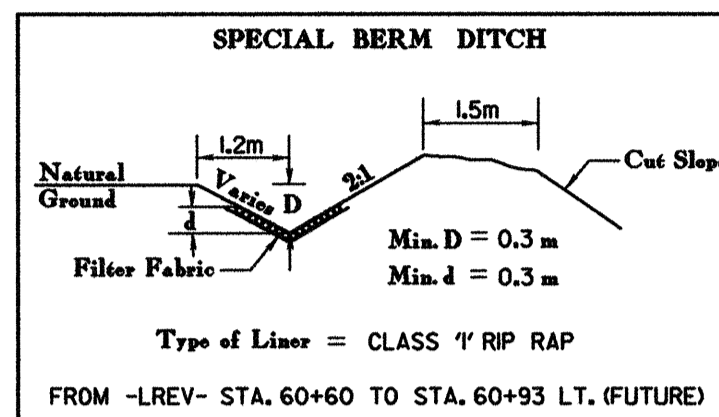
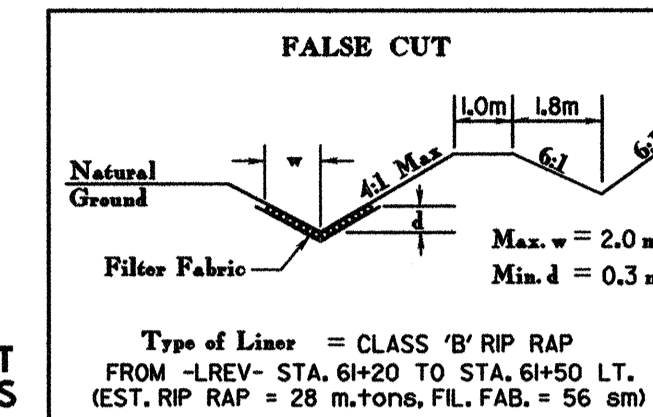
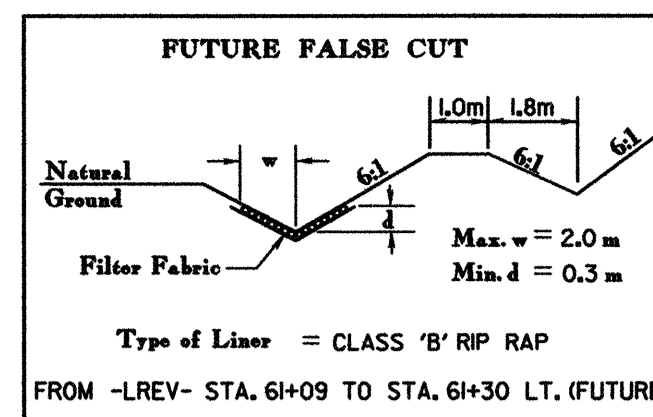
-L-
 PIs Sta 55+27.374
 $\Delta = 28^{\circ} 19' 50.9''$ (LT)
 $L = 576.053$
 $T = 294.842$
 $R = 1165.000$

-L-
 PIs Sta 58+29.386
 $\theta s = 1^{\circ} 28' 31.5''$
 $L_s = 60.000$
 $LT = 40.001$
 $ST = 20.001$

-LREV-
 PIs Sta 52+50.153
 $\theta s = 2^{\circ} 12' 47.3''$
 $L_s = 90.000$
 $LT = 60.005$
 $ST = 30.004$

-LREV-
 PIs Sta 55+58.285
 $\Delta = 26^{\circ} 51' 19.4''$ (LT)
 $L = 546.053$
 $T = 278.137$
 $R = 1165.000$
 $Se = 0.05$
 $DS = 105$ km/h

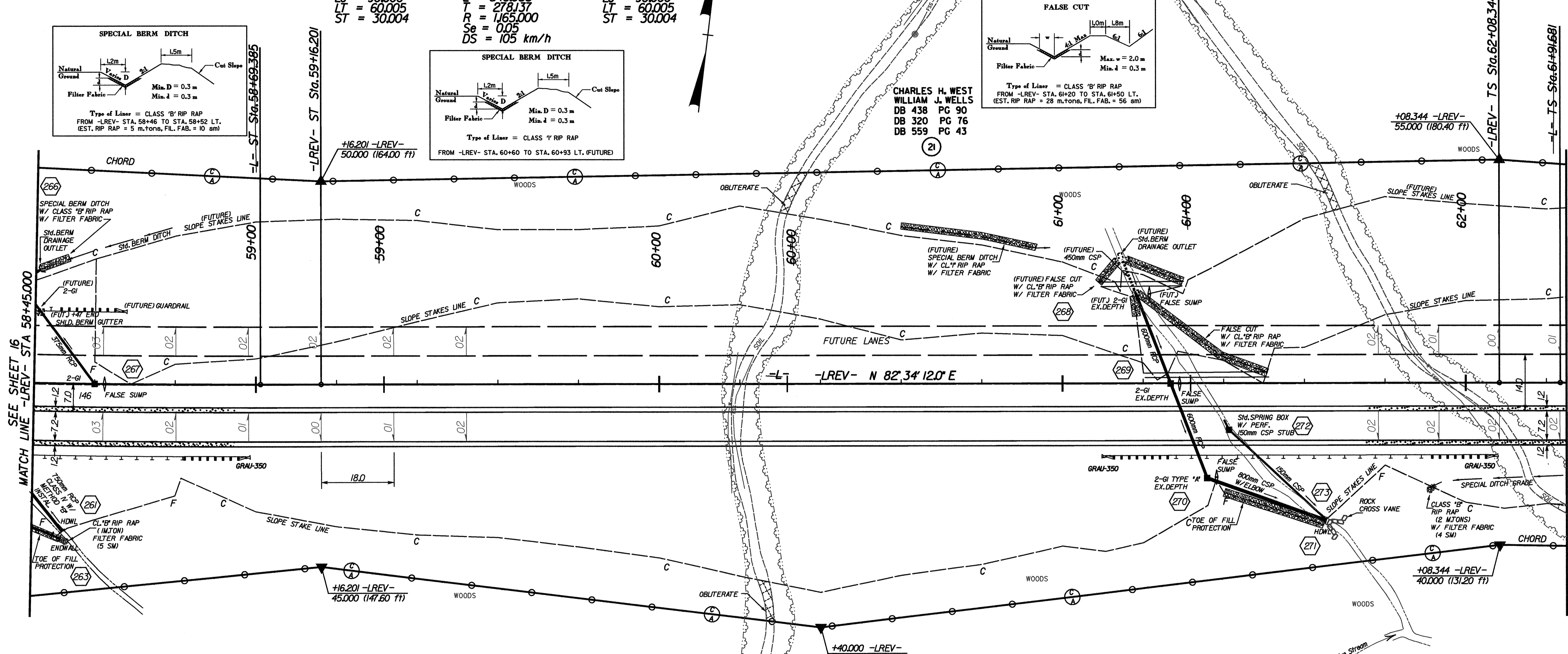
-LREV-
 PIs Sta 58+56.205
 $\theta s = 2^{\circ} 12' 47.3''$
 $L_s = 90.000$
 $LT = 60.005$
 $ST = 30.004$



PROJECT REFERENCE NO. R-977A
 HIGHWAY DESIGN ENGINEER
 SEAL 15759
 NORTH CAROLINA PROFESSIONAL ENGINEER
 STEPHEN C. BRODIE

SHEET NO. 17
 HYDRAULICS ENGINEER
 SEAL 20737
 NORTH CAROLINA PROFESSIONAL ENGINEER
 WILLIAM J. WELLS

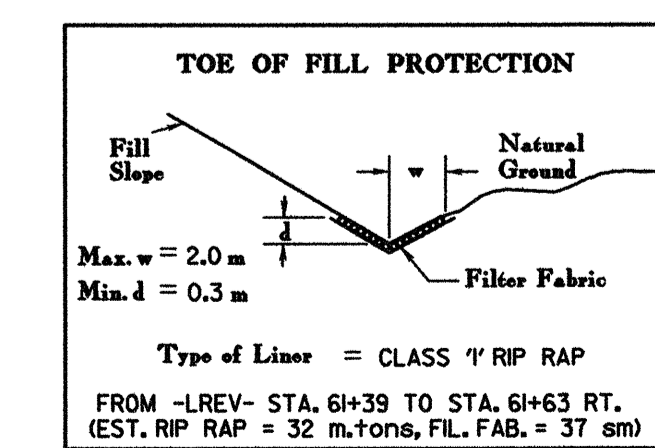
CONST. REV.
 R/W REV.



SEE SHEET 16
MATCH LINE -LREV- STA 58+45.000

MATCH LINE -LREV- STA 62+25.000
SEE SHEET 18

(21)
 CHARLES H. WEST
 WILLIAM J. WELLS
 DB 438 PG 90
 DB 320 PG 76
 DB 559 PG 43



-LREV-
 PIs Sta 62+68.352
 $\theta s = 2^{\circ} 56' 47.9''$
 $L_s = 90.000$
 $LT = 60.008$
 $ST = 30.008$

-LREV-
 PIs Sta 66+99.236
 $\Delta = 49^{\circ} 13' 51.2''$ (RT)
 $L = 751.836$
 $T = 400.892$
 $R = 875.000$
 $Se = 0.06$
 $DS = 105$ km/h

-LREV-
 PIs Sta 62+68.352
 $\theta s = 2^{\circ} 56' 47.9''$
 $L_s = 90.000$
 $LT = 60.008$
 $ST = 30.008$

-L-
 PIs Sta 62+31.683
 $\theta s = 1^{\circ} 57' 51.9''$
 $L_s = 60.000$
 $LT = 40.002$
 $ST = 20.002$

-L-
 PIs Sta 66+70.867
 $\Delta = 51^{\circ} 11' 43.1''$ (RT)
 $L = 781.836$
 $T = 419.186$
 $R = 875.000$

-L-
 PIs Sta 62+31.683
 $\theta s = 1^{\circ} 57' 51.9''$
 $L_s = 60.000$
 $LT = 40.002$
 $ST = 20.002$

SEE SHEET 43 FOR -LREV- PROFILE
SEE PROFILES FOR DITCH GRADES

LOCHNER
 H. W. LOCHNER, INC.
 2840 PLAZA PLACE, SUITE 202
 RALEIGH, NC 27612

...:Design\0977_R01_PSH17.dgn 12/6/2004 2:21:43 PM