

**METRIC**

5 0 10

CONST. REV.  
R/W REV.

PROJECT REFERENCE NO. R-977A	SHEET NO. 18
HIGHWAY DESIGN ENGINEER	HYDRAULICS ENGINEER

**-LREV-**  
 Pts Sta 62+68.352  
 $\theta_s = 2^\circ 56' 47.9''$   
 $L_s = 90.000$   
 $LT = 60.008$   
 $ST = 30.008$

**-LREV-**  
 PI Sta 66+99.236  
 $\Delta = 49^\circ 13' 51.2''$  (RT)  
 $L = 751.836$   
 $T = 400.892$   
 $R = 875.000$   
 $Se = 0.06$   
 $DS = 105 \text{ km/h}$

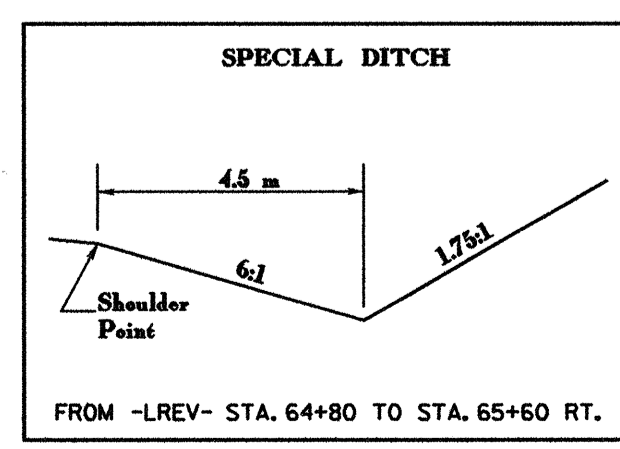
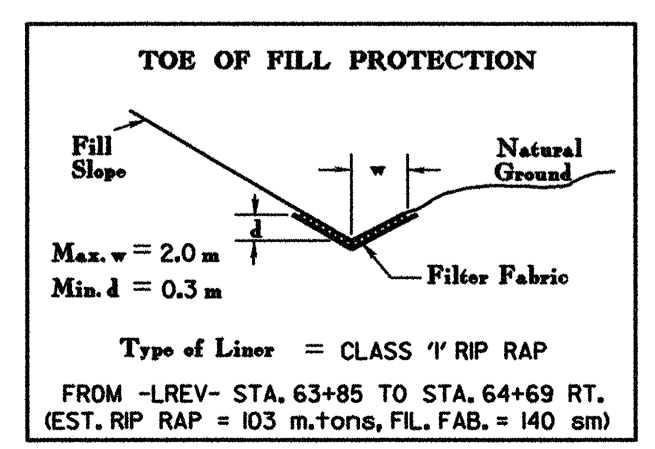
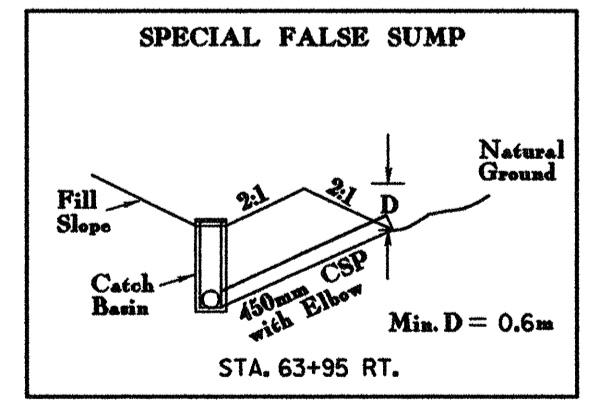
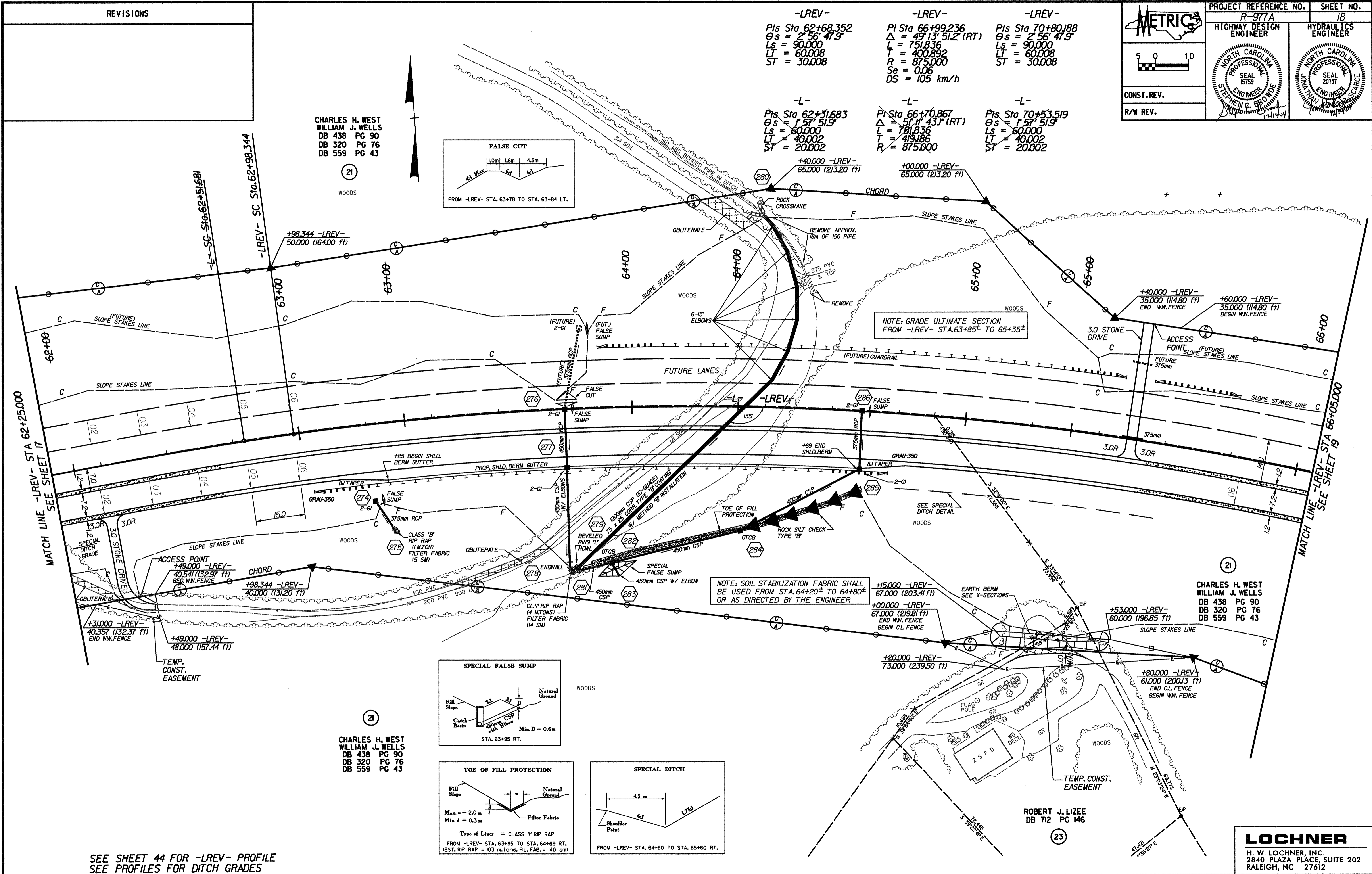
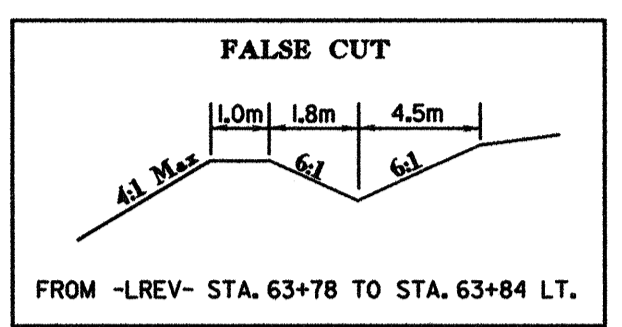
**-LREV-**  
 Pts Sta 70+80.188  
 $\theta_s = 2^\circ 56' 47.9''$   
 $L_s = 90.000$   
 $LT = 60.008$   
 $ST = 30.008$

**-L-**  
 Pts Sta 62+31.683  
 $\theta_s = 1^\circ 57' 51.9''$   
 $L_s = 60.000$   
 $LT = 40.002$   
 $ST = 20.002$

**-L-**  
 PI Sta 66+70.867  
 $\Delta = 51^\circ 1' 43.1''$  (RT)  
 $L = 781.836$   
 $T = 419.186$   
 $R = 875.000$

**-L-**  
 Pts Sta 70+53.519  
 $\theta_s = 1^\circ 57' 51.9''$   
 $L_s = 60.000$   
 $LT = 40.002$   
 $ST = 20.002$

CHARLES H. WEST  
 WILLIAM J. WELLS  
 DB 438 PG 90  
 DB 320 PG 76  
 DB 559 PG 43



SEE SHEET 44 FOR -LREV- PROFILE  
 SEE PROFILES FOR DITCH GRADES

**LOCHNER**  
 H. W. LOCHNER, INC.  
 2840 PLAZA PLACE, SUITE 202  
 RALEIGH, NC 27612

...: \nasign\06037\_F01\_PSH8.dgn 12/8/2004 2:22:01 PM