

-LREV-
 Pts Sta 62+68.352
 $\theta s = 2' 56'' 47.9''$
 $Ls = 90.000$
 $LT = 60.008$
 $ST = 30.008$

-LREV-
 Pts Sta 66+99.236
 $\Delta = 49' 13'' 51.2'' (RT)$
 $L = 751.836$
 $T = 400.892$
 $R = 875.000$
 $Se = 0.06$
 $DS = 105 \text{ km/h}$

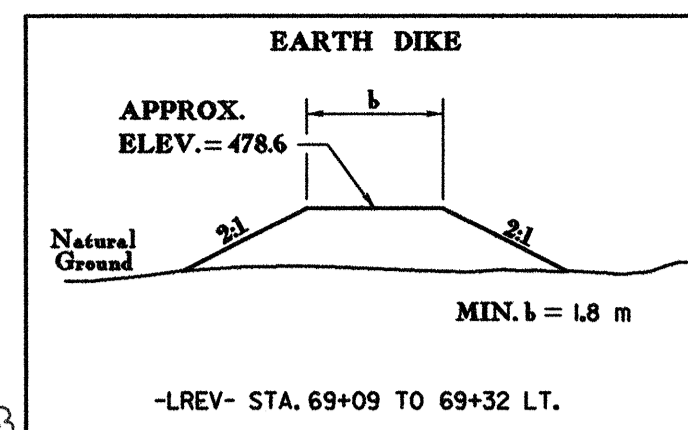
-LREV-
 Pts Sta 70+90.188
 $\theta s = 2' 56'' 47.9''$
 $Ls = 90.000$
 $LT = 60.008$
 $ST = 30.008$

-L-
 Pts Sta 62+31.683
 $\theta s = 1' 57'' 51.9''$
 $Ls = 60.000$
 $LT = 40.002$
 $ST = 20.002$

-L-
 Pts Sta 66+70.867
 $\Delta = 51' 11'' 43.1'' (RT)$
 $L = 781.836$
 $T = 419.186$
 $R = 875.000$

-L-
 Pts Sta 70+53.519
 $\theta s = 1' 57'' 51.9''$
 $Ls = 60.000$
 $LT = 40.002$
 $ST = 20.002$

NOTE: FOR ACCURATE APPROACH SLAB LOCATIONS, SEE STRUCTURE PLAN SHEETS S-1 TO S-6

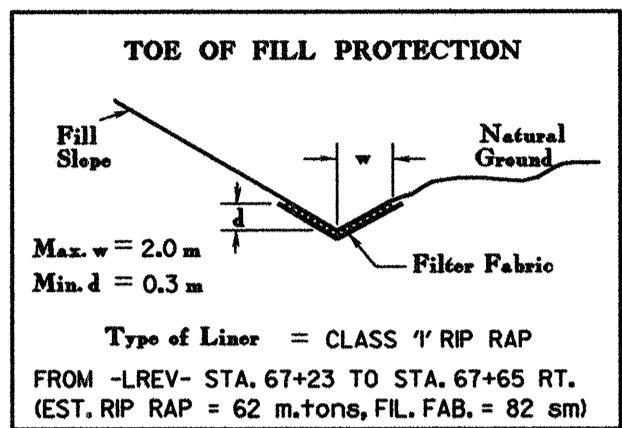


PROJECT REFERENCE NO. R-977A SHEET NO. 19

HIGHWAY DESIGN ENGINEER
 NORTH CAROLINA PROFESSIONAL SEAL 15759
 STEPHEN C. BROOKS

HYDRAULICS ENGINEER
 NORTH CAROLINA PROFESSIONAL SEAL 20737
 JOHANNES VAN NUNING

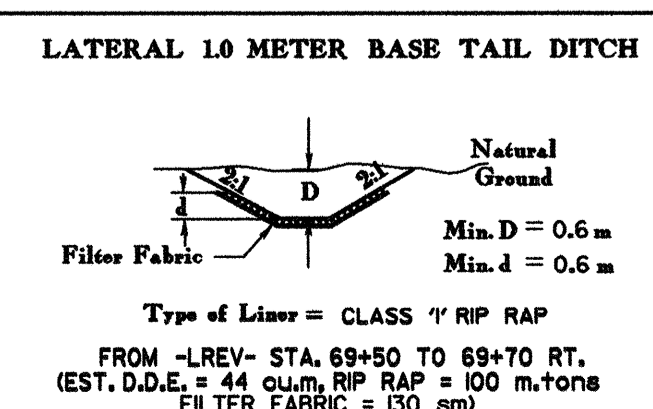
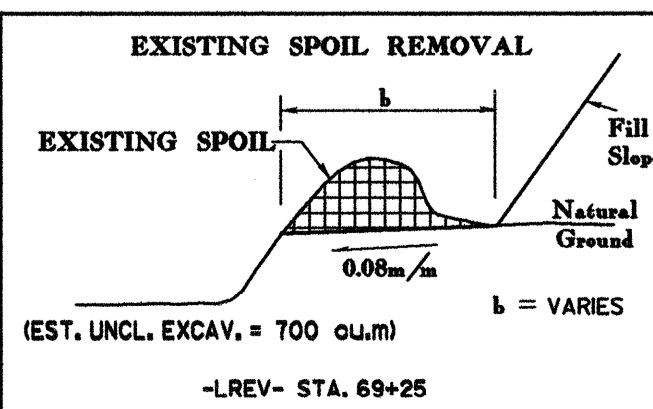
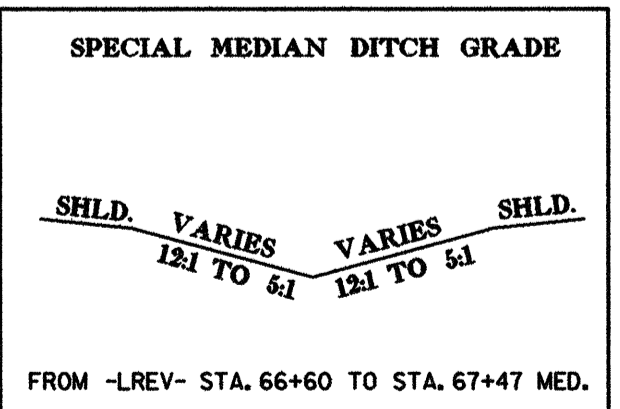
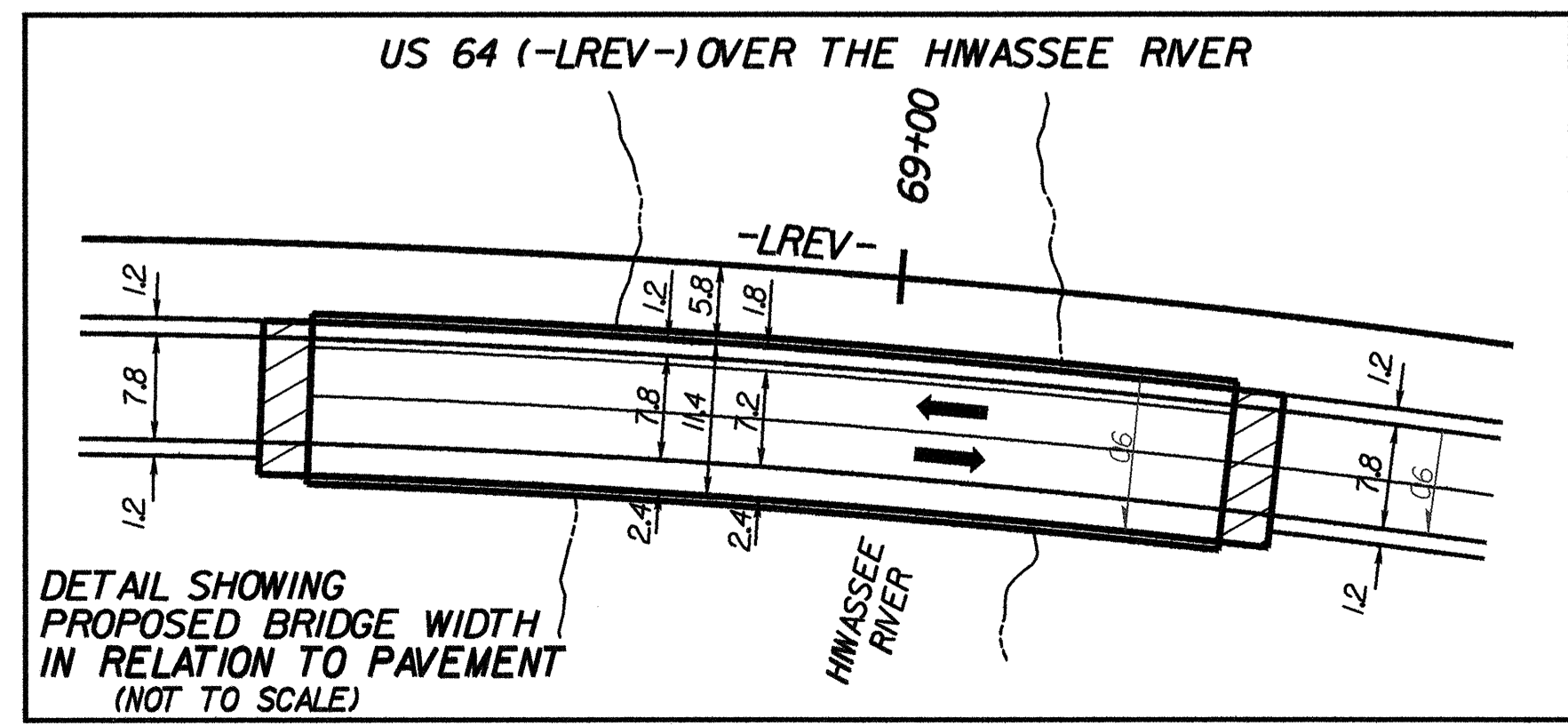
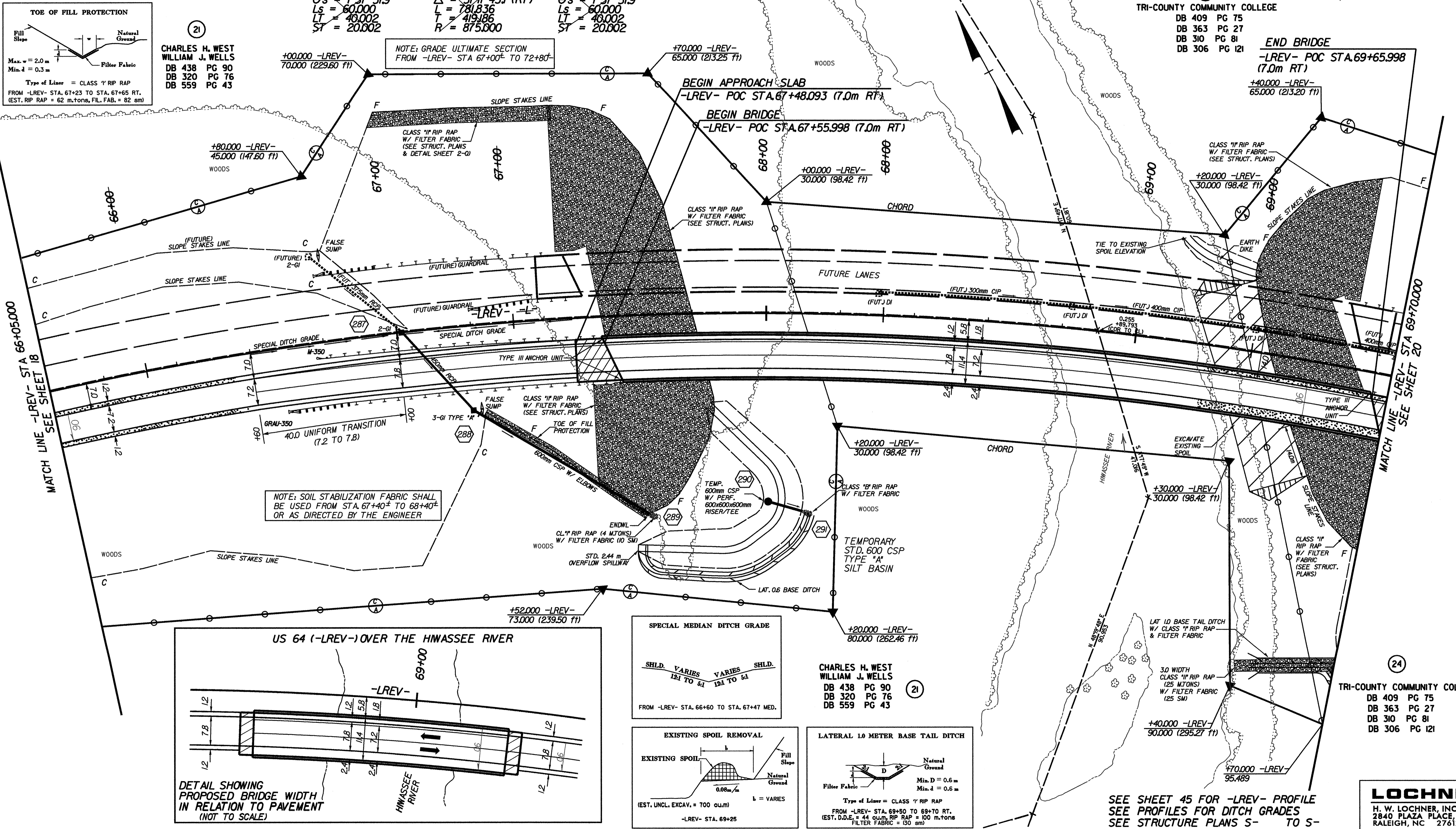
CONST. REV.
 R/W REV.



CHARLES H. WEST
 WILLIAM J. WELLS
 DB 438 PG 90
 DB 320 PG 76
 DB 559 PG 43

TRI-COUNTY COMMUNITY COLLEGE
 DB 409 PG 75
 DB 363 PG 27
 DB 310 PG 81
 DB 306 PG 121

END BRIDGE
 -LREV- POC STA. 69+65.998 (7.0m RT)
 +40.000 -LREV- 65.000 (213.20 ft)



TRI-COUNTY COMMUNITY COLLEGE
 DB 409 PG 75
 DB 363 PG 27
 DB 310 PG 81
 DB 306 PG 121

LOCHNER
 H. W. LOCHNER, INC.
 2840 PLAZA PLACE, SUITE 202
 RALEIGH, NC 27612