

METRIC

PROJECT REFERENCE NO. R-977A
SHEET NO. 25

HIGHWAY DESIGN ENGINEER
HYDRAULICS ENGINEER

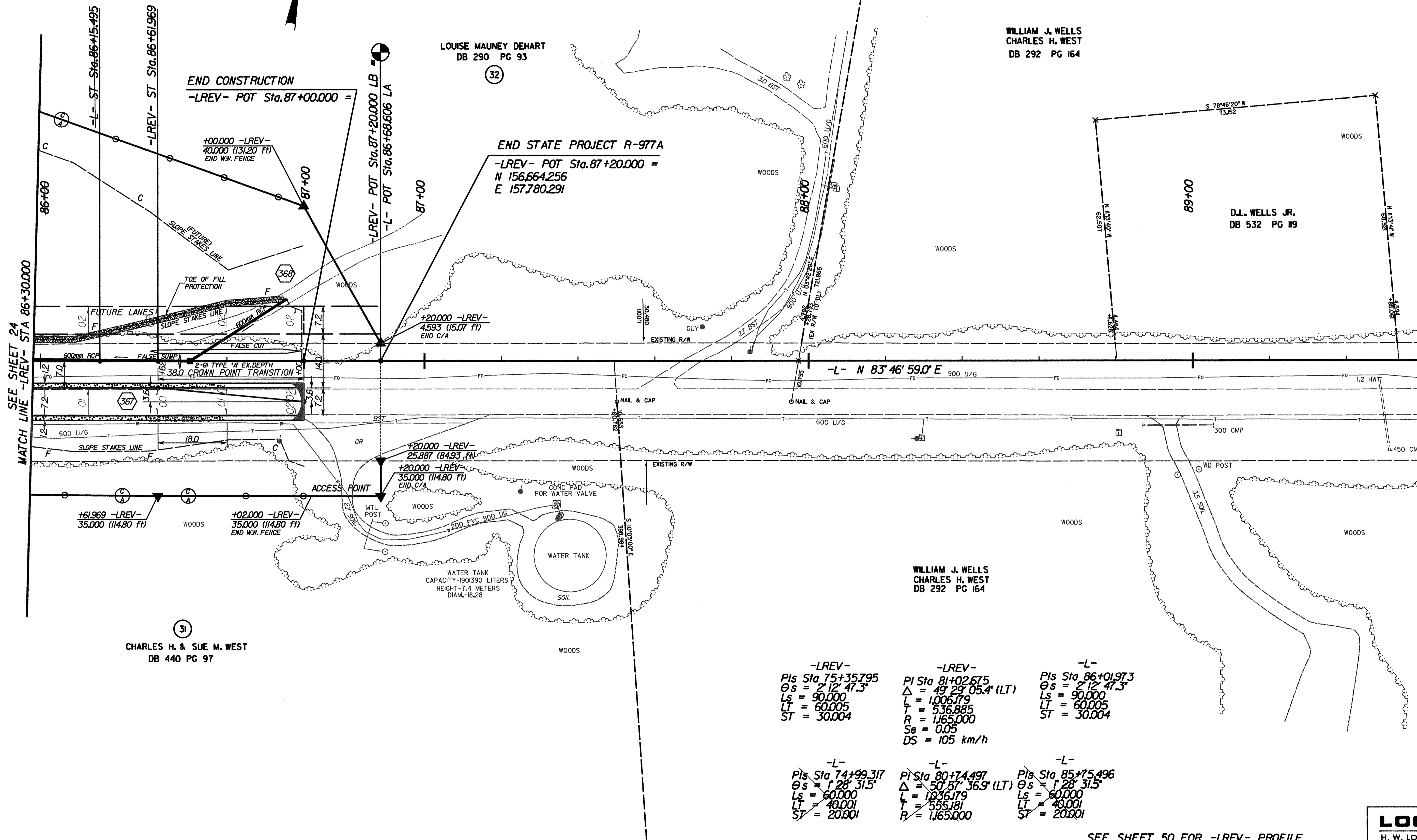
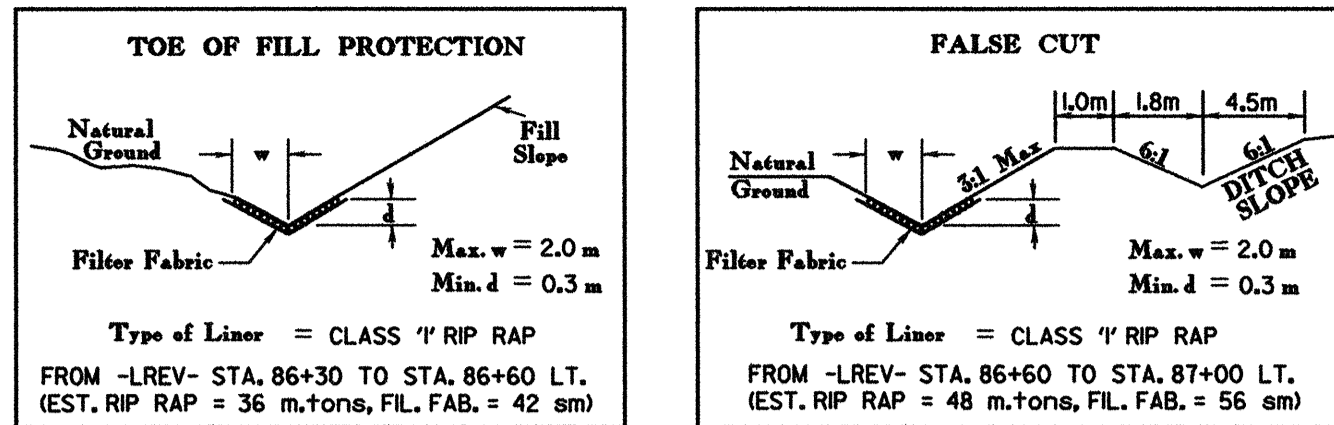
CONST. REV.
R/W REV.

WILLIAM J. WELLS
CHARLES H. WEST
DB 292 PG 164

WILLIAM J. WELLS
CHARLES H. WEST
DB 292 PG 164

D.L. WELLS JR.
DB 532 PG 119

CHARLES H. & SUE M. WEST
DB 440 PG 97



-LREV- Pis Sta 75+35.795 θs = 2° 12' 47.3" Ls = 90.000 LT = 60.005 ST = 30.004	-LREV- Pis Sta 81+02.675 Δ = 49° 29' 05.4" (LT) L = 1,006.179 T = 536.885 R = 1,165.000 Se = 0.05 DS = 105 km/h	-L- Pis Sta 86+01.973 θs = 2° 12' 47.3" Ls = 90.000 LT = 60.005 ST = 30.004
-L- Pis Sta 74+99.317 θs = 1° 28' 31.5" Ls = 60.000 LT = 49.001 ST = 20.001	-L- Pis Sta 80+74.497 Δ = 50° 57' 36.9" (LT) L = 1,036.179 T = 555.181 R = 1,165.000	-L- Pis Sta 85+75.496 θs = 1° 28' 31.5" Ls = 60.000 LT = 49.001 ST = 20.001