

METRIC

PROJECT REFERENCE NO. R-977A SHEET NO. 27

HIGHWAY DESIGN ENGINEER

HYDRAULICS ENGINEER

NORTH CAROLINA PROFESSIONAL SEAL 15759

STEPHEN C. BROOKS

NORTH CAROLINA PROFESSIONAL SEAL 20737

THOMAS W. SCARCE

CONST. REV.

R/W REV.

-Y7-
 PIs Sta 74+27.218
 $\theta s = 5^{\circ} 00' 00.0''$
 $Ls = 60.939$
 $LT = 40.656$
 $ST = 20.335$

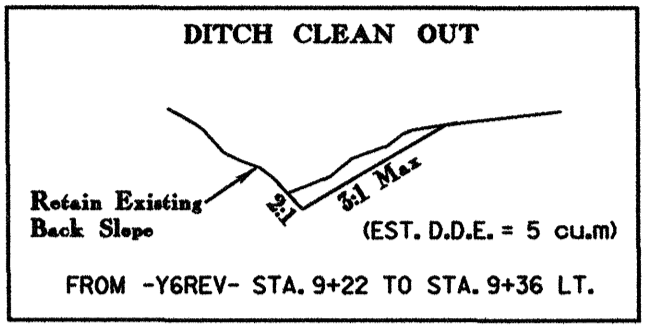
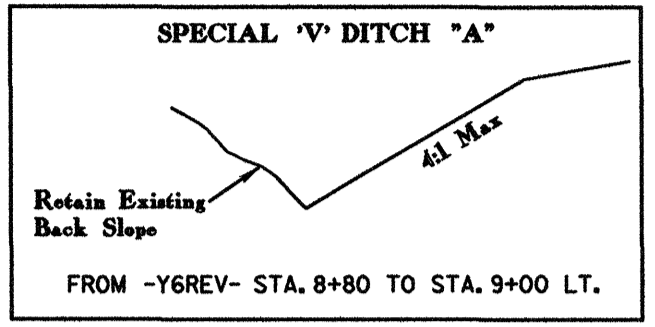
-Y7-
 PIs Sta 75+07.897
 $\Delta = 19^{\circ} 36' 51.0''$ (LT)
 $L = 119.568$
 $T = 60.375$
 $R = 349.276$
 $Se = EXIST.$

-Y7-
 PIs Sta 75+87.425
 $\theta s = 5^{\circ} 00' 00.0''$
 $Ls = 60.939$
 $LT = 40.656$
 $ST = 20.335$

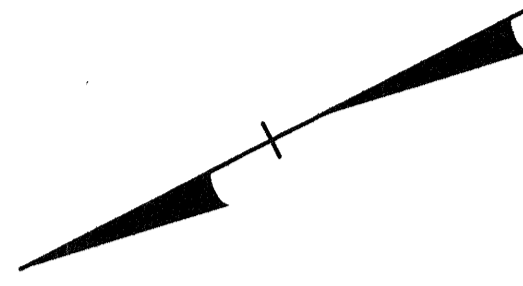
-Y6-
 PIs Sta 10+37.875
 $\Delta = 65^{\circ} 04' 47.0''$ (LT)
 $L = 36.066$
 $T = 20.260$
 $R = 31.752$

-Y6REV-
 PIs Sta 9+40.261
 $\Delta = 1^{\circ} 00' 12.9''$ (RT)
 $L = 122.434$
 $T = 61.219$
 $R = 6,990.000$
 $Se = NC$
 $Ro = 65.000$
 $DS = 100$ km/h

-Y7REV-
 PIs Sta 75+76.124
 $\Delta = 40^{\circ} 36' 36.8''$ (RT)
 $L = 70.878$
 $T = 37.001$
 $R = 100.000$
 $Se = 0.04$
 $Ro = AS SHOWN$
 $DS = 50$ km/h

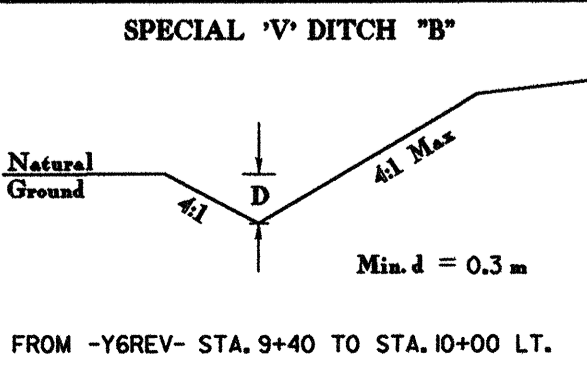
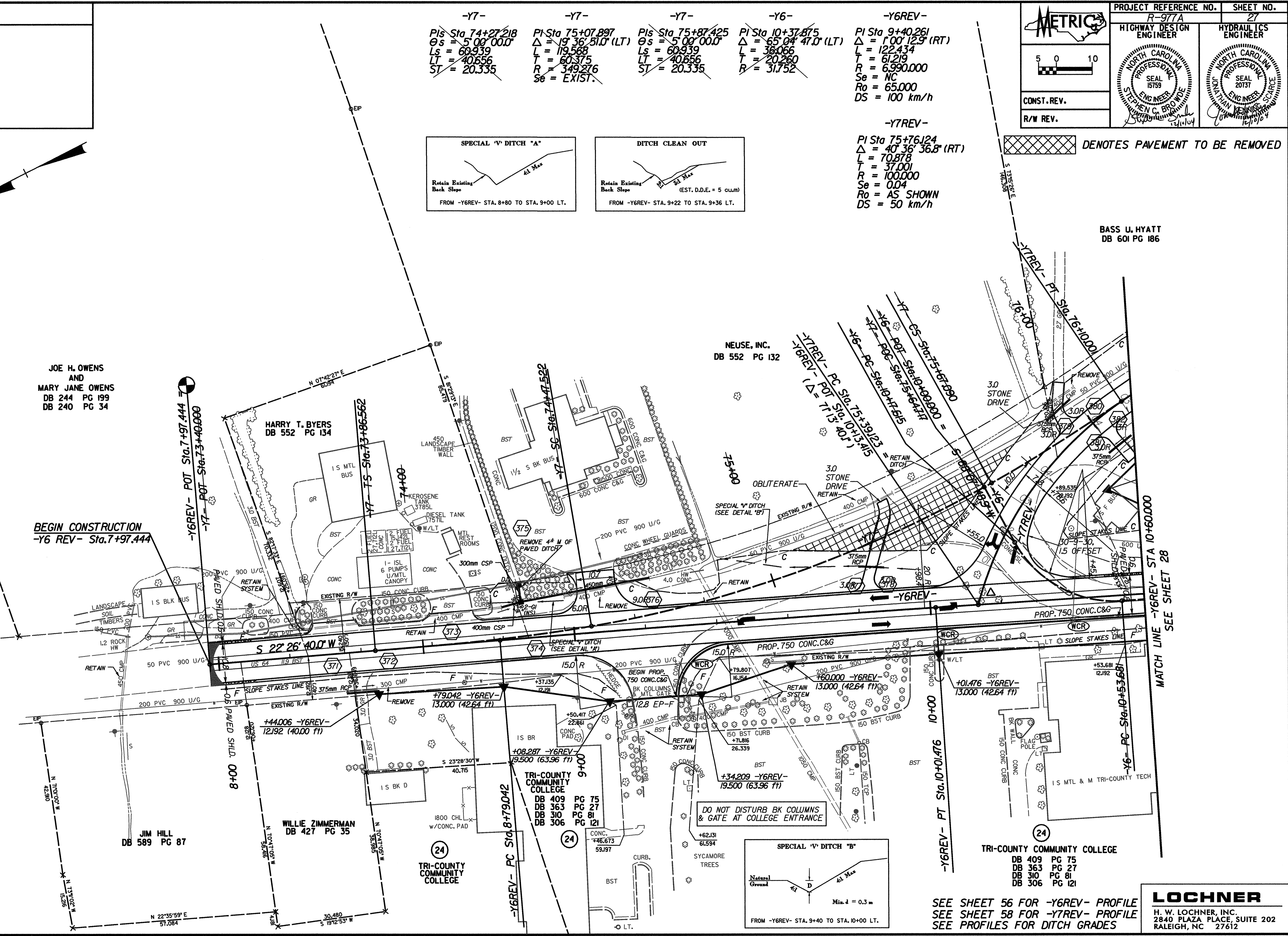


DENOTES PAVEMENT TO BE REMOVED



JOE H. OWENS
 AND
 MARY JANE OWENS
 DB 244 PG 199
 DB 240 PG 34

BEGIN CONSTRUCTION
 -Y6 REV- Sta. 7+97.444



SEE SHEET 56 FOR -Y6REV- PROFILE
 SEE SHEET 58 FOR -Y7REV- PROFILE
 SEE PROFILES FOR DITCH GRADES

Design: R977_01.dwg, 12/19/2004 2:24:12 PM