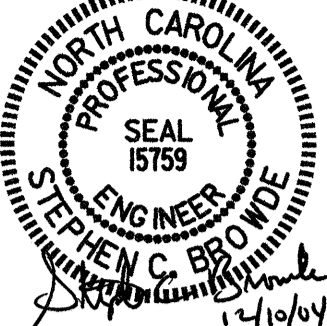

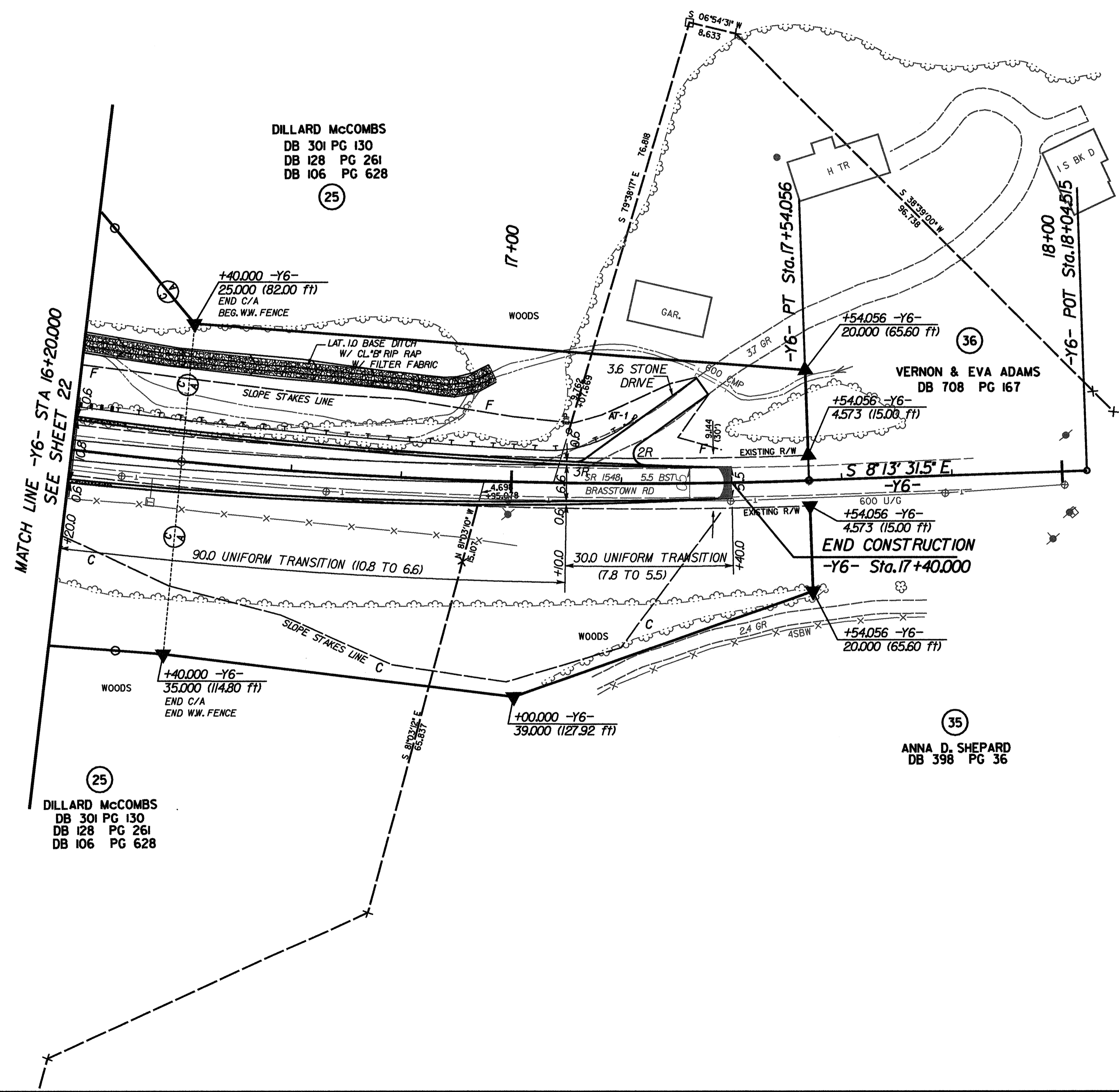
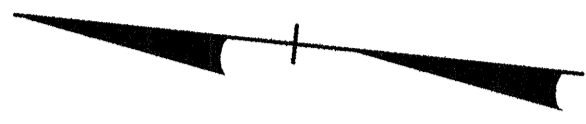
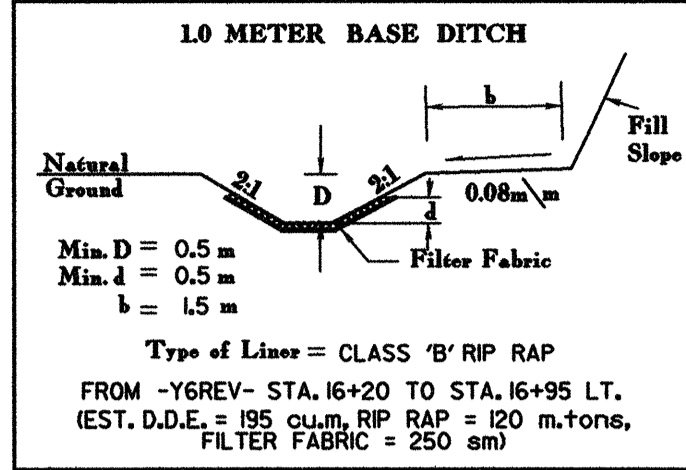
	PROJECT REFERENCE NO.	SHEET NO.
	R-977A	29
CONST. REV.	HIGHWAY DESIGN ENGINEER	HYDRAULICS ENGINEER
R/W REV.		

-Y6REV-/-Y6-  
 PI Sta 15+19.902  
 $\Delta = 31^{\circ} 40' 24.6" (LT)$   
 $L = 480.942$   
 $T = 246.788$   
 $R = 870.000$   
 $Se = 0.05$   
 $Ro = AS SHOWN$   
 $DS = 100 \text{ km/h}$



SEE SHEET 57 FOR -Y6- PROFILE  
 SEE PROFILES FOR DITCH GRADES

...:\design\0977\_B01\_P5103.dgn 12/8/2004 2:24:48 PM