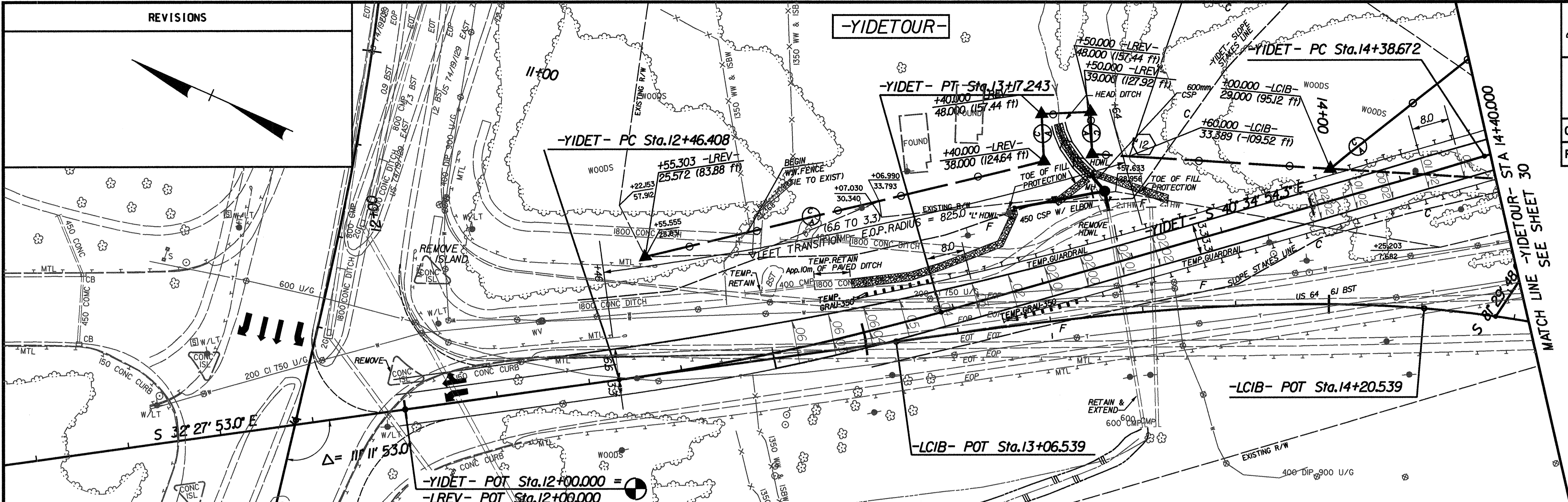


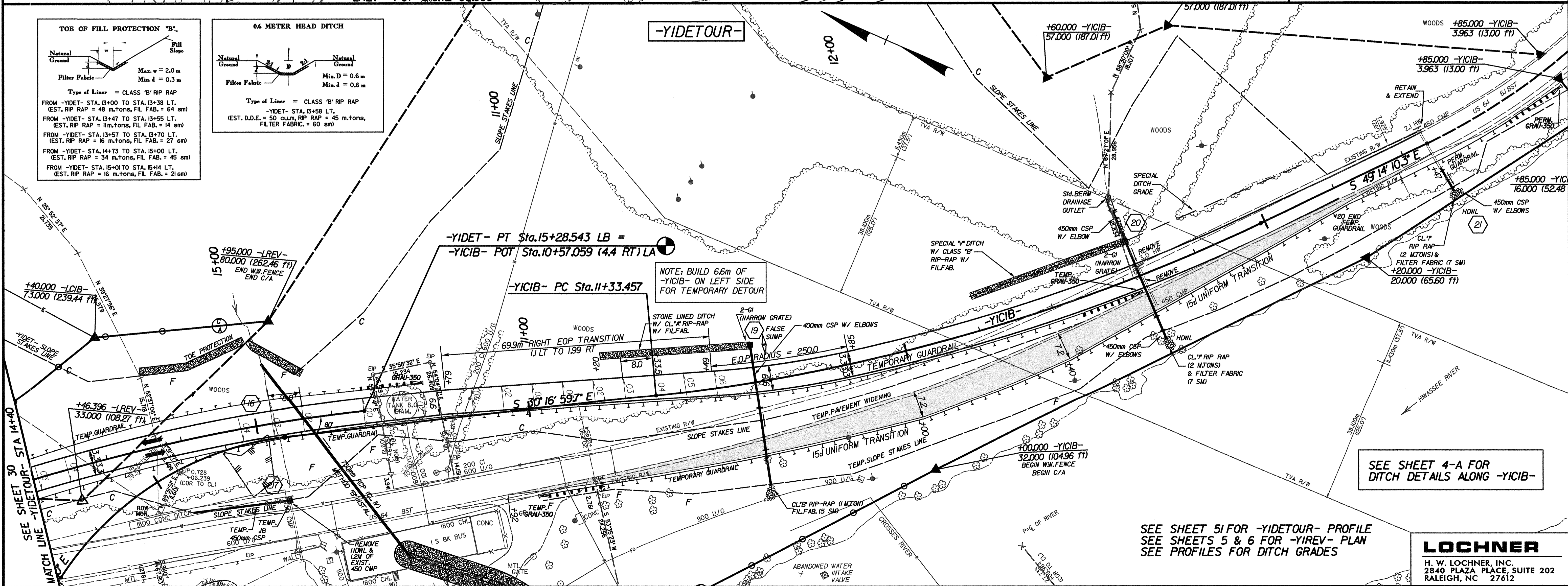
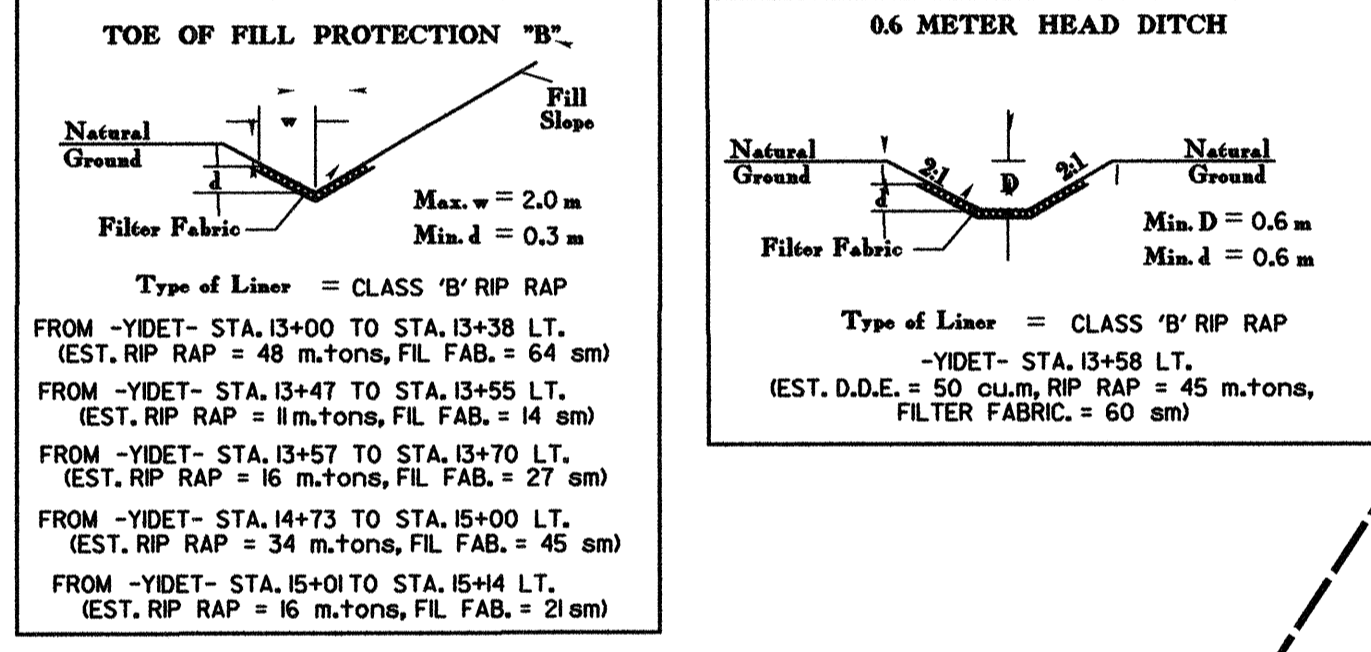
REVISIONS

	PROJECT REFERENCE NO.	SHEET NO.
	R-977A	30
	HIGHWAY DESIGN ENGINEER	HYDRAULICS ENGINEER
CONST. REV.		
R/W REV.		



-YIDET-	-YIDET-
PI Sta 12+81.885	PI Sta 15+05.307
$\Delta = 8^{\circ} 07' 01.3" (LT)$	$\Delta = 23^{\circ} 44' 24.4" (RT)$
L = 70.834	L = 89.804
T = 35.477	T = 45.190
R = 500.000	R = 215.000
Se = 0.06	Se = 0.04
Ro = AS SHOWN	Ro = AS SHOWN
DS = 80 km/h	DS = km/h

-YICIB-	-YICIB-
PI Sta 10+09.417	PI Sta 11+67.685
$\Delta = 59^{\circ} 04' 14.9" (RT)$	$\Delta = 26^{\circ} 48' 36.7" (LT)$
L = 82.478	L = 107.623
T = 45.327	T = 54.815
R = 80.000	R = 230.000
Se = 0.04	Se = 0.06
Ro = AS SHOWN	Ro = AS SHOWN
DS = 40 km/h	DS = km/h



LOCHNER

H. W. LOCHNER, INC.
2840 PLAZA PLACE, SUITE 202
RALEIGH, NC 27612