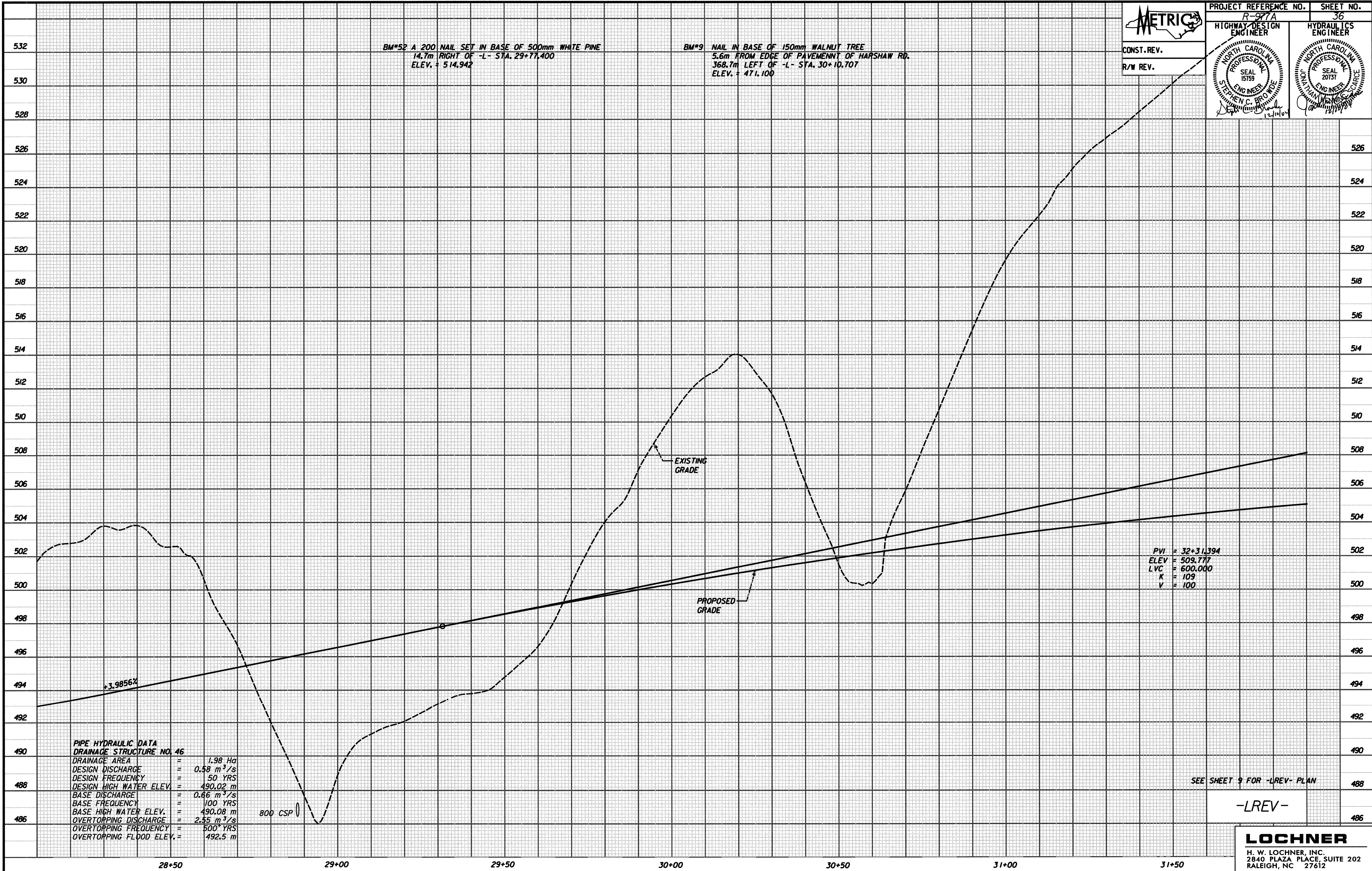


PROJECT REFERENCE NO. R-977A	SHEET NO. 36
HIGHWAY DESIGN ENGINEER	HYDRAULICS ENGINEER

CONST. REV.  
R/W REV.

BM#52 A 200 NAIL SET IN BASE OF 500mm WHITE PINE  
14.7m RIGHT OF -L- STA. 29+77.400  
ELEV. = 514.942

BM#9 NAIL IN BASE OF 150mm WALNUT TREE  
5.6m FROM EDGE OF PAVEMENT OF HARSHAW RD.  
368.7m LEFT OF -L- STA. 30+10.707  
ELEV. = 471.100



PVI = 32+31.394  
ELEV = 509.777  
LVC = 600.000  
K = 109  
V = 100

PIPE HYDRAULIC DATA  
DRAINAGE STRUCTURE NO. 46  
DRAINAGE AREA = 1.98 Ha  
DESIGN DISCHARGE = 0.58 m<sup>3</sup>/s  
DESIGN FREQUENCY = 50 YRS  
DESIGN HIGH WATER ELEV. = 490.02 m  
BASE DISCHARGE = 0.66 m<sup>3</sup>/s  
BASE FREQUENCY = 100 YRS  
BASE HIGH WATER ELEV. = 490.08 m  
OVERTOPPING DISCHARGE = 2.55 m<sup>3</sup>/s  
OVERTOPPING FREQUENCY = 500 YRS  
OVERTOPPING FLOOD ELEV. = 492.5 m

800 CSP

SEE SHEET 9 FOR -LREV- PLAN

-LREV-

**LOCHNER**  
H. W. LOCHNER, INC.  
2840 PLAZA PLACE, SUITE 202  
RALEIGH, NC 27612

...:\design\96977\_R01\_PROJ\04\_12/29/2004\_5:38:07 AM