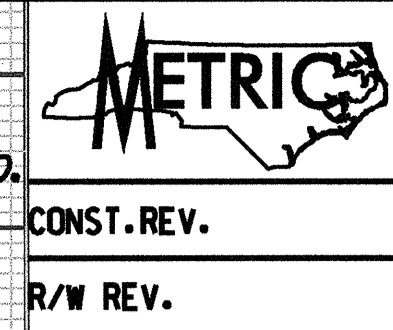
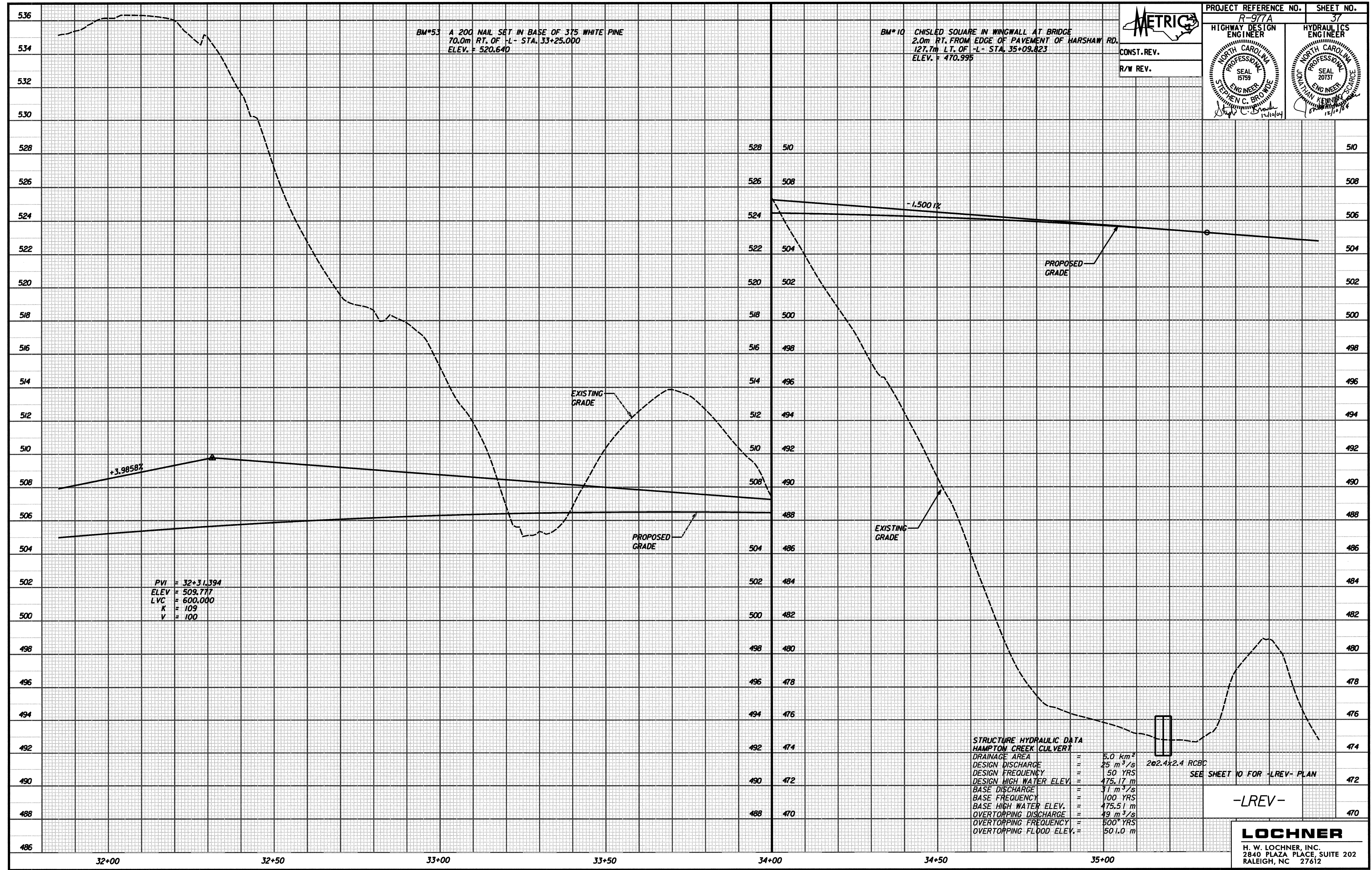


BM#53 A 200 NAIL SET IN BASE OF 375 WHITE PINE
70.0m RT. OF -L- STA. 33+25.000
ELEV. = 520.640

BM#10 CHISELED SQUARE IN WINGWALL AT BRIDGE
2.0m RT. FROM EDGE OF PAVEMENT OF HARSHAW RD.
127.7m LT. OF -L- STA. 35+09.823
ELEV. = 470.995



PROJECT REFERENCE NO. R-977A	SHEET NO. 37
HIGHWAY DESIGN ENGINEER	HYDRAULICS ENGINEER



PVI = 32+31.394
ELEV = 509.777
LVC = 600.000
K = 109
V = 100

STRUCTURE HYDRAULIC DATA
HAMPTON CREEK CULVERT
DRAINAGE AREA = 5.0 km²
DESIGN DISCHARGE = 25 m³/s
DESIGN FREQUENCY = 50 YRS
DESIGN HIGH WATER ELEV. = 475.17 m
BASE DISCHARGE = 31 m³/s
BASE FREQUENCY = 100 YRS
BASE HIGH WATER ELEV. = 475.51 m
OVERTOPPING DISCHARGE = 49 m³/s
OVERTOPPING FREQUENCY = 500 YRS
OVERTOPPING FLOOD ELEV. = 501.0 m

2x2.4x2.4 RCBC
SEE SHEET 10 FOR -LREV- PLAN

-LREV-

LOCHNER
H. W. LOCHNER, INC.
2840 PLAZA PLACE, SUITE 202
RALEIGH, NC 27612

...:\Design\98077_B01_P001.dgn 12/9/2004 5:38:11 AM