



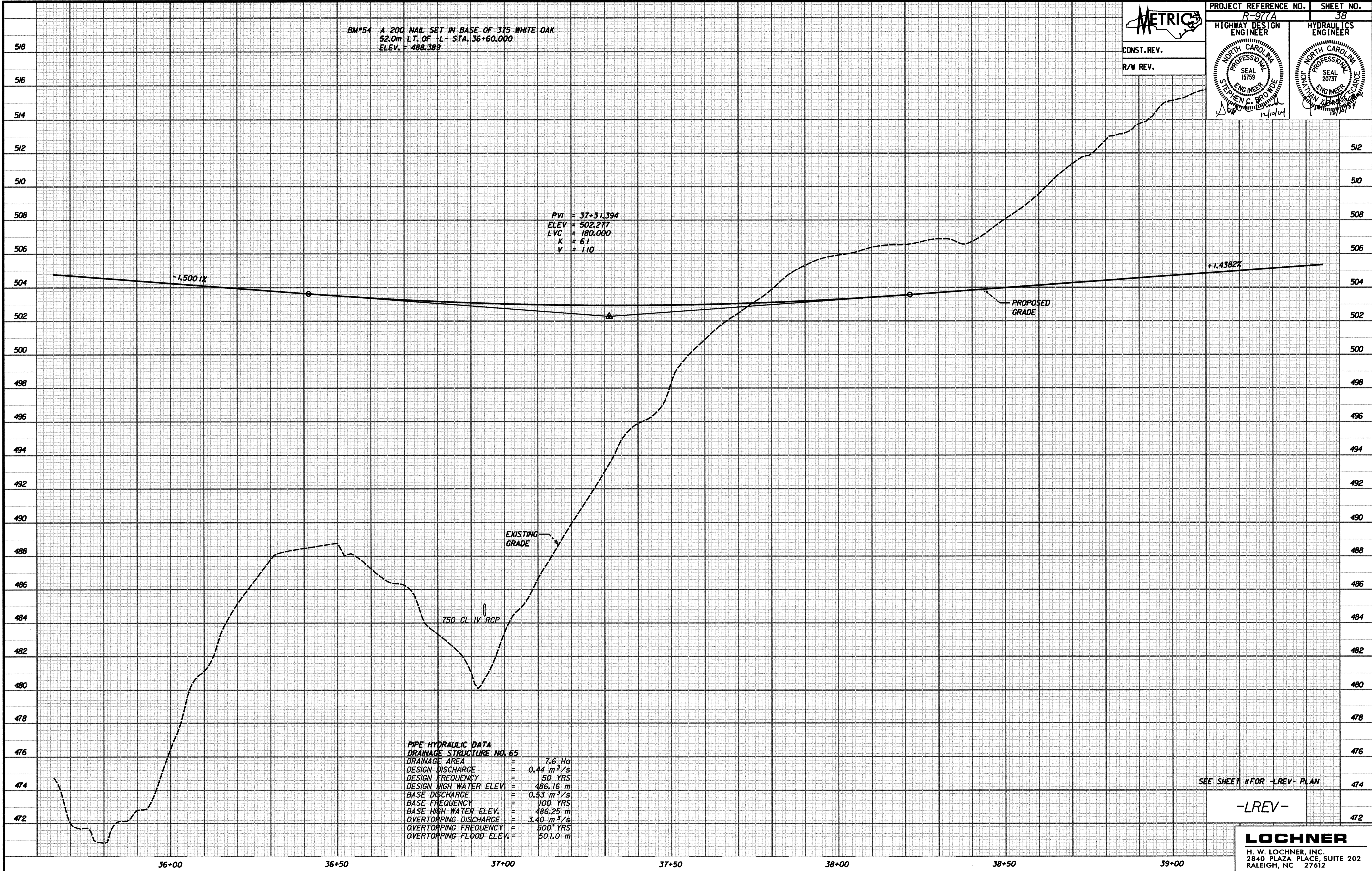
CONST. REV.
R/W REV.

NORTH CAROLINA PROFESSIONAL ENGINEER SEAL 15759
STEPHEN C. BRONDE

NORTH CAROLINA PROFESSIONAL ENGINEER SEAL 20737
JOHN W. THOMAS

BM#54 A 200 NAIL SET IN BASE OF 375 WHITE OAK
52.0m LT. OF +L- STA. 36+60.000
ELEV. = 488.389

PVI = 37+31.394
ELEV = 502.277
LVC = 180.000
K = 61
V = 110



PIPE HYDRAULIC DATA
DRAINAGE STRUCTURE NO. 65

DRAINAGE AREA	=	7.6 Ha
DESIGN DISCHARGE	=	0.44 m ³ /s
DESIGN FREQUENCY	=	50 YRS
DESIGN HIGH WATER ELEV.	=	486.16 m
BASE DISCHARGE	=	0.53 m ³ /s
BASE FREQUENCY	=	100 YRS
BASE HIGH WATER ELEV.	=	486.25 m
OVERTOPPING DISCHARGE	=	3.40 m ³ /s
OVERTOPPING FREQUENCY	=	500 YRS
OVERTOPPING FLOOD ELEV.	=	501.0 m

SEE SHEET # FOR -LREV- PLAN

-LREV-

...:\Users\m\90977_RDY_PROJ\... 12/9/2004 5:38:14 AM