

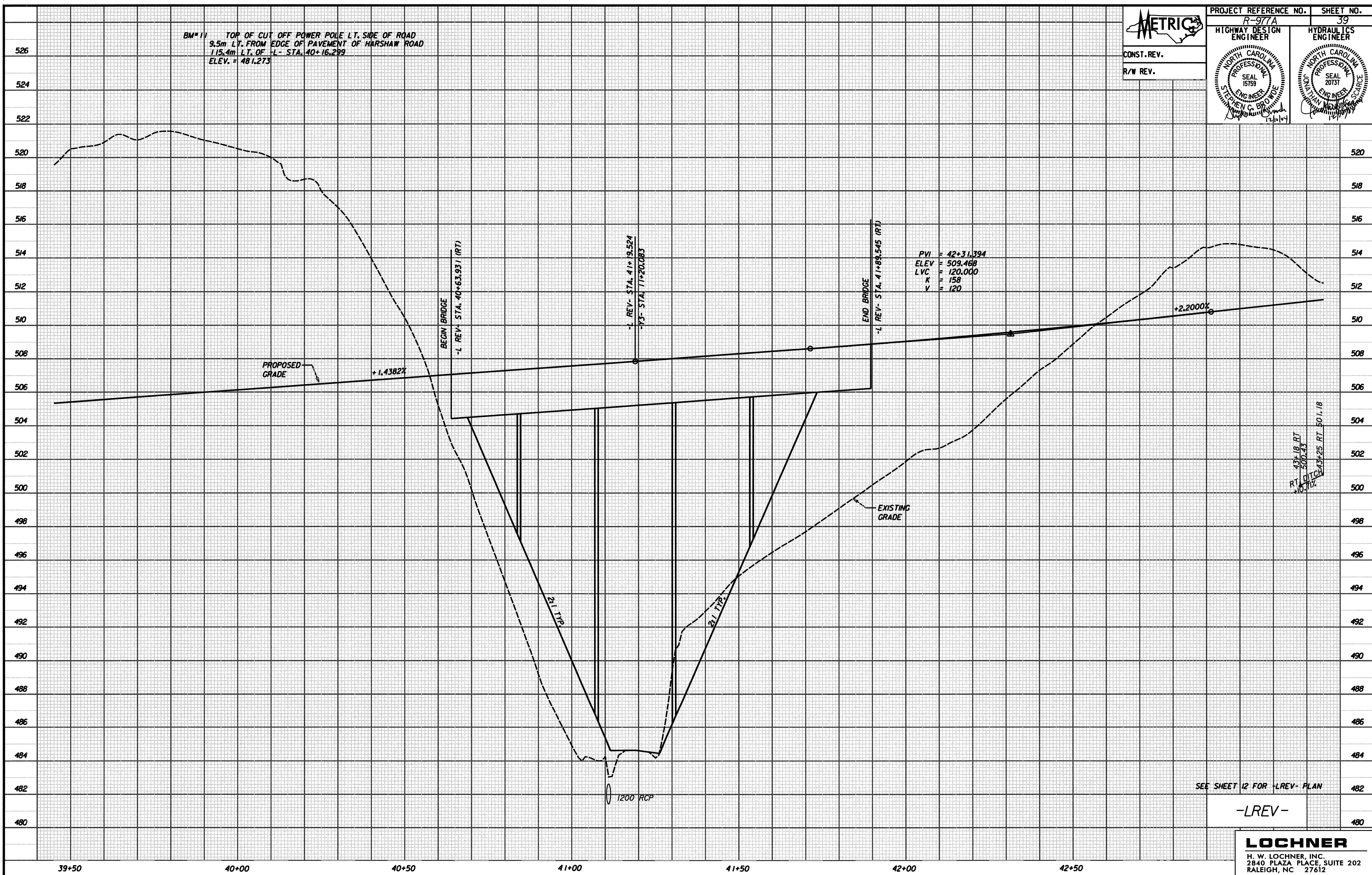


PROJECT REFERENCE NO. R-977A	SHEET NO. 39
HIGHWAY DESIGN ENGINEER	HYDRAULICS ENGINEER

BM# 11 TOP OF CUT OFF POWER POLE LT. SIDE OF ROAD
9.5m LT. FROM EDGE OF PAVEMENT OF HARSHAW ROAD
115.4m LT. OF L- STA. 40+16.299
ELEV. = 481.273

CONST. REV.
R/W REV.

PVI = 42+31.394
ELEV = 509.468
LVC = 120.000
K = 158
V = 120



-LREV-

LOCHNER
H. W. LOCHNER, INC.
2840 PLAZA PLACE, SUITE 202
RALEIGH, NC 27612

...Design\090977_PDF_PDF.dgn 12/9/2004 5:38:18 AM