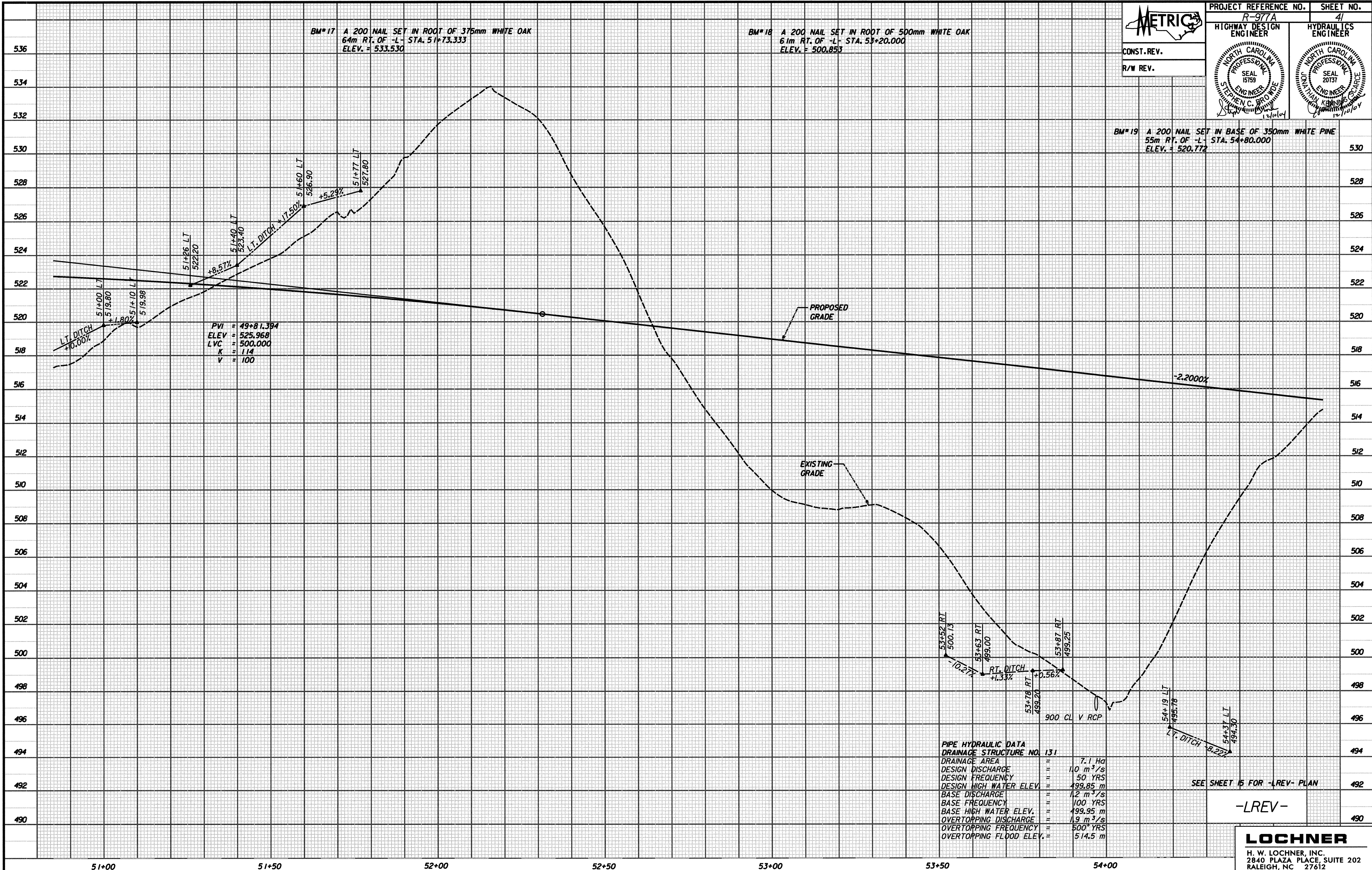


BM#17 A 200 NAIL SET IN ROOT OF 375mm WHITE OAK  
64m RT. OF -L- STA. 51+73.333  
ELEV. = 533.530

BM#18 A 200 NAIL SET IN ROOT OF 500mm WHITE OAK  
61m RT. OF -L- STA. 53+20.000  
ELEV. = 500.853

BM#19 A 200 NAIL SET IN BASE OF 350mm WHITE PINE  
55m RT. OF -L- STA. 54+80.000  
ELEV. = 520.772



PVI = 49+81.394  
ELEV = 525.968  
LVC = 500.000  
K = 114  
V = 100

PIPE HYDRAULIC DATA  
DRAINAGE STRUCTURE NO. 131

DRAINAGE AREA	=	7.1 Ha
DESIGN DISCHARGE	=	1.0 m <sup>3</sup> /s
DESIGN FREQUENCY	=	50 YRS
DESIGN HIGH WATER ELEV.	=	499.85 m
BASE DISCHARGE	=	1.2 m <sup>3</sup> /s
BASE FREQUENCY	=	100 YRS
BASE HIGH WATER ELEV.	=	499.95 m
OVERTOPPING DISCHARGE	=	1.9 m <sup>3</sup> /s
OVERTOPPING FREQUENCY	=	500 YRS
OVERTOPPING FLOOD ELEV.	=	514.5 m

SEE SHEET 15 FOR -LREV- PLAN

-LREV-

...:User:gnv19877\_P01\_PROF.dgn 12/9/2004 5:38:42 AM