

PROJECT REFERENCE NO. R-977A SHEET NO. 44

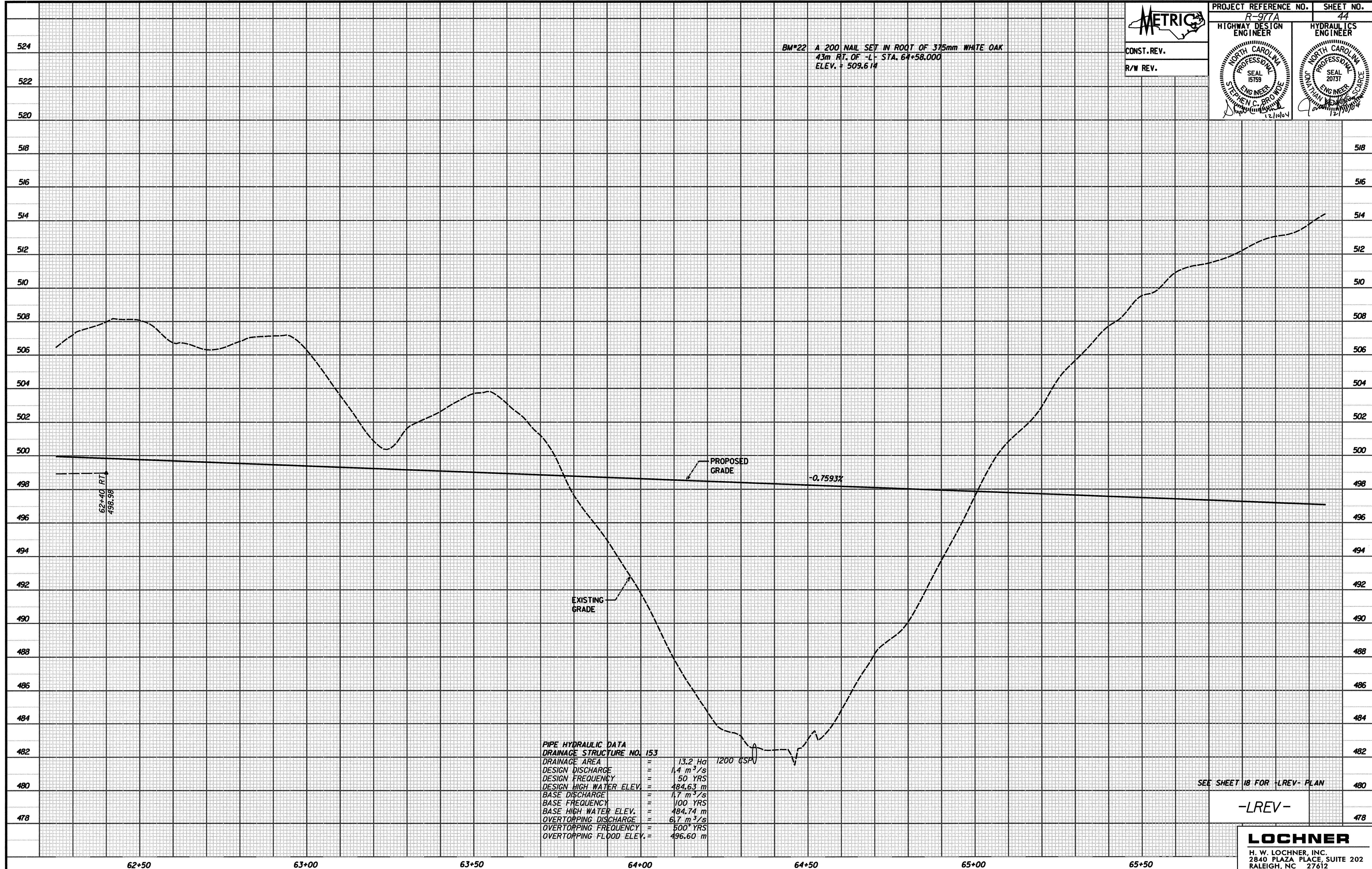
HIGHWAY DESIGN ENGINEER  
HYDRAULICS ENGINEER

SEAL 15759  
STEPHEN C. BRODIE  
12/10/04

SEAL 20737  
12/10/04

CONST. REV.  
R/W REV.

BM\*22 A 200 NAIL SET IN ROOT OF 375mm WHITE OAK  
43m RT. OF -L- STA. 64+58.000  
ELEV. + 509.614



PIPE HYDRAULIC DATA  
DRAINAGE STRUCTURE NO. 153

DRAINAGE AREA	=	13.2 Ha	1200 CSP
DESIGN DISCHARGE	=	1.4 m <sup>3</sup> /s	
DESIGN FREQUENCY	=	50 YRS	
DESIGN HIGH WATER ELEV.	=	484.63 m	
BASE DISCHARGE	=	1.7 m <sup>3</sup> /s	
BASE FREQUENCY	=	100 YRS	
BASE HIGH WATER ELEV.	=	484.74 m	
OVERTOPPING DISCHARGE	=	6.7 m <sup>3</sup> /s	
OVERTOPPING FREQUENCY	=	500 YRS	
OVERTOPPING FLOOD ELEV.	=	496.60 m	

SEE SHEET 18 FOR -LREV- PLAN

-LREV-

**LOCHNER**  
H. W. LOCHNER, INC.  
2840 PLAZA PLACE, SUITE 202  
RALEIGH, NC 27612

\\ms101\p0977\_001\_P001.dwg 12/09/2004 5:38:54 AM