



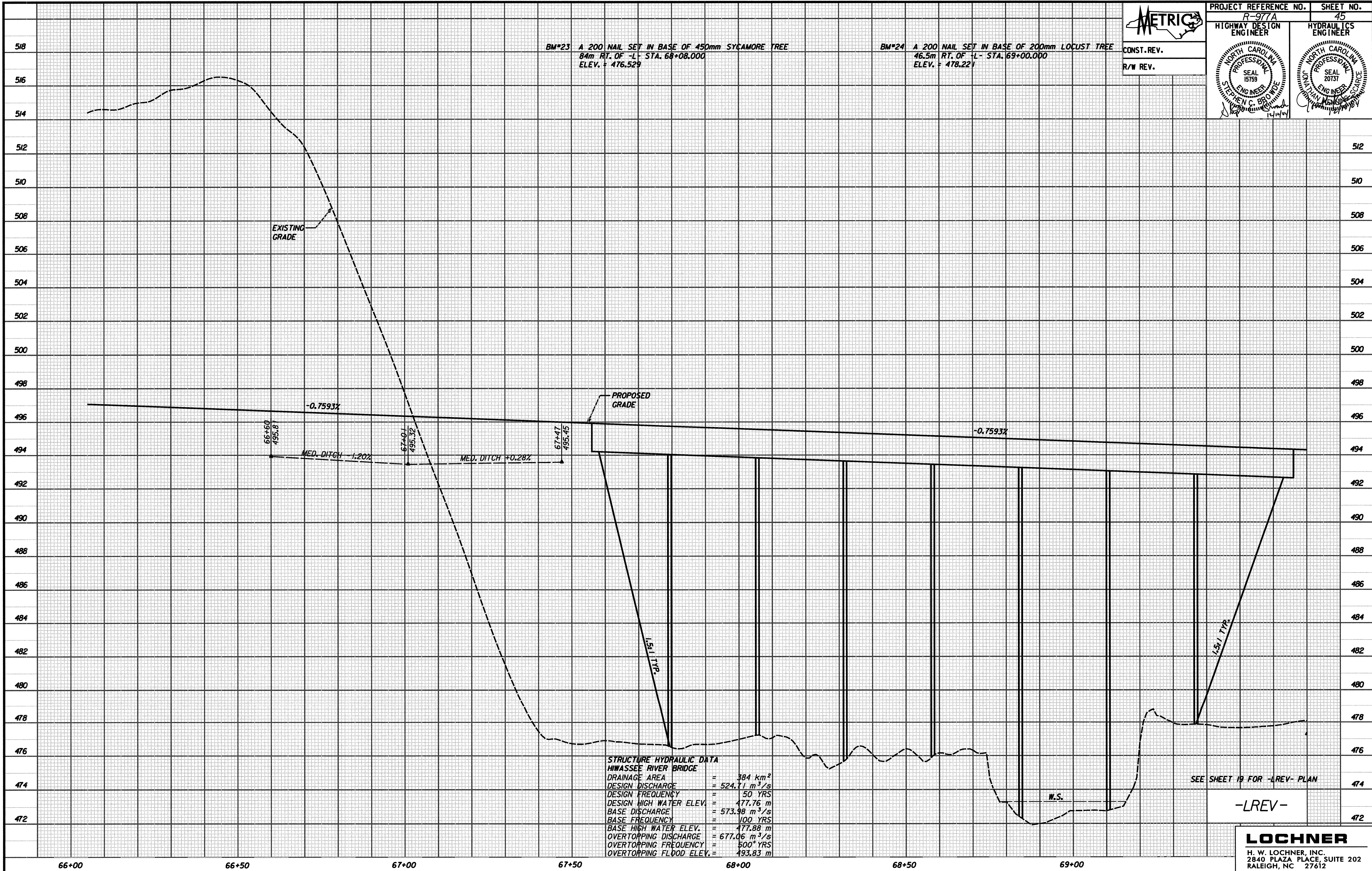
HIGHWAY DESIGN ENGINEER  
 NORTH CAROLINA PROFESSIONAL SEAL 15759  
 STEPHEN C. BROWNE

HYDRAULICS ENGINEER  
 NORTH CAROLINA PROFESSIONAL SEAL 20737  
 JOHN W. LOCHNER

BM#23 A 200 NAIL SET IN BASE OF 450mm SYCAMORE TREE  
 84m RT. OF -L- STA. 68+08.000  
 ELEV. = 476.529

BM#24 A 200 NAIL SET IN BASE OF 200mm LOCUST TREE  
 46.5m RT. OF -L- STA. 69+00.000  
 ELEV. = 478.221

CONST. REV.  
 R/W REV.



STRUCTURE HYDRAULIC DATA  
 HWASSEE RIVER BRIDGE

DRAINAGE AREA	= 384 km <sup>2</sup>
DESIGN DISCHARGE	= 524.71 m <sup>3</sup> /s
DESIGN FREQUENCY	= 50 YRS
DESIGN HIGH WATER ELEV.	= 477.76 m
BASE DISCHARGE	= 573.98 m <sup>3</sup> /s
BASE FREQUENCY	= 100 YRS
BASE HIGH WATER ELEV.	= 477.88 m
OVERTOPPING DISCHARGE	= 677.06 m <sup>3</sup> /s
OVERTOPPING FREQUENCY	= 500* YRS
OVERTOPPING FLOOD ELEV.	= 493.83 m

...:\Design\98977\_B01\_PROFL.dgn 12/29/2004 5:38:57 AM