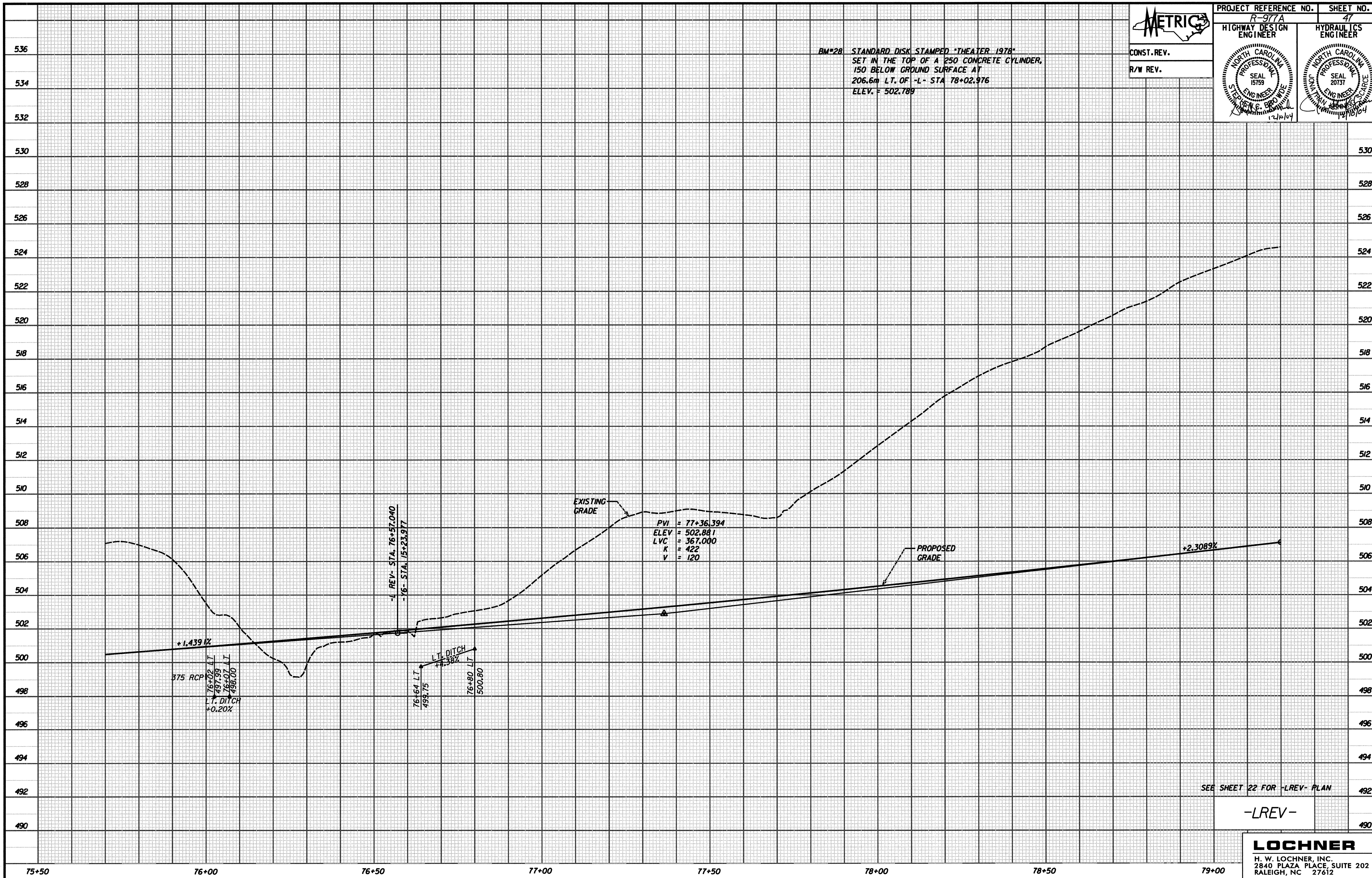




PROJECT REFERENCE NO. R-977A	SHEET NO. 47
HIGHWAY DESIGN ENGINEER	HYDRAULICS ENGINEER

CONST. REV.
R/W REV.

BM*28 STANDARD DISK STAMPED "THEATER 1978"
SET IN THE TOP OF A 250 CONCRETE CYLINDER,
150 BELOW GROUND SURFACE AT
206.6m LT. OF -L- STA 78+02.976
ELEV. = 502.789



SEE SHEET 22 FOR -LREV- PLAN

-LREV-

LOCHNER
H. W. LOCHNER, INC.
2840 PLAZA PLACE, SUITE 202
RALEIGH, NC 27612

I:\Design\98077_B01_PDF1.dgn 12/9/2004 5:36:05 AM